



# Test Benches & Cleaning Machines

Reliable, clean and eco-friendly.



Universal  
For all types of hoses and fittings.



Ecoline  
Value driven solution for less frequent use.



Integrated Tank  
Saves work space and is quiet.



P 160 Ecoline



P 160



P 250



P 300



P 350



RG 2



RG 10





Hose lines that cannot withstand the high pressure for which they are designed can cause serious damage, resulting in high costs - often higher than the price of a test bench. Why take a risk that can be easily avoided?

By testing the quality of your products, you opt for safety. The P 160 or P 160 Ecoline workshop test benches allow for the efficient and safe final inspection and testing of hose lines. They are easy to operate and quickly become part of your routine procedures.



P 160



P 160 Ecoline

## Quality and safety

Fully enclosed test chamber

Also suitable for static pressure testing of various hydraulic components such as valves, hydraulic cylinders, housings, quick-release couplings, etc.

Safety valve – when the hood is opened, all pressure is automatically released within 1/10 second

Hood with gas springs and transparent Makrolon® safety pane

Environmentally friendly test medium (water-oil emulsion)

Easy and safe to operate

Test bench can be retrofitted with extension element (P 160)

Logging software/printer available as optional equipment (Control B+ Touch) (P 160)

Compressed air filter with condenser

## Innovative technology for fast processing

Parts to be tested (hose lines) can be inserted quickly by means of our Steck-O-System and without any time-consuming preparation or modifications to the tank

Fast filling and automatic pressure release of tested parts

## CE compliant

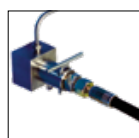
Hood with gas springs and transparent Makrolon® safety pane

We reserve the right to make technical changes without notice. Options are machine parts that can only be ordered while buying the machine.

## Package

P 160 Package/  
P 160 Ecoline Package  
Machine  
+ Steck-O-Adapter metric 405.901  
+ Steck-O-Adapter imperial 405.902  
+ Anticorrosion additive EM CO - 18 kg

## Standard



Steck-O-System

## Accessories



4 Steck-O-Adapter 405.6.

## Technical Data



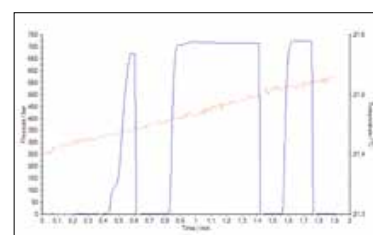
P 160 Ecoline



P 160

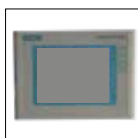
Technical data	P 160 Ecoline	P 160
Test pressure	150 - 1 300 bar	150 - 1 300 bar
Drive	Intensifier	Intensifier
Flow	1,1 L/min	1,1 L/min
Capacity	7 bar, 20 NI/min	7 bar, 20 NI/min
Tank dimensions	1 200 x 600 x 250 mm	1 590 x 795 x 370 mm
Test bench dimensions	1 400 x 600 x 1 200 mm	2 210 x 950 x 1 325 mm
Reservoir capacity	33 L	100 L
Colour	RAL 5012 Blue	RAL 5012 Blue, RAL 7021 Grey
Weight	120 kg empty	210 kg empty
Noise level	72 dBA	72 dBA
<b>Accessories</b>		
Suction filter	✓	✓
Air preparation unit	✓	✓
Steck-O-Adapter (s-series only)	DN 4/6/8/10/12/ G 1/2" 405.901	DN 4/6/8/10/12/ G 1/2" 405.901
Steck-O-Adapter (s-series only)	R 1/4"/ 3/8"/ 1/2"/ 3/4"/ G 1/2" 405.902	R 1/4"/ 3/8"/ 1/2"/ 3/4"/ G 1/2" 405.902
Anticorrosion additive	EM 10 I	EM 10 I
<b>Options</b>		
Alternative drive only with pre filling pump 405.904/405.914	-	0,38 kW, 400V 50Hz 3Ph
High pressure* (Steck-O-System not available)	-	150 - 3 000 bar
Low pressure*	-	20 - 1 300 bar

\* Only one of the two options possible.



UPP Protokoll

## Options



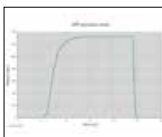
Control B + Touch (only for P 160)



The P 160 is also available in stainless steel


P 160 extension element  
407.3150: Total chamber length 3 600 mm  
407.3250: Total chamber length 4 400 mm


UPP Pressure Sensor for test benches.



## Additional Information



Steck-O-System:

- Clean, quick and reliable connection
- Push-in system for easy assembly
- Ample space in chamber
- Adapter for fast connection



## P 250



88

The P 250 Test Bench with Control C.2 IPC is a new modular test bench that can be adapted to your needs. It offers the possibility to test with Steck-o, Hand or Hydraulic quick cone system. You can also install a Euro Pallet inside. The Chamber also accepts a non-end extension if you prefer to test a hose lengthwise. The controller offers all parameters for a fully automatic test, with visualization of the pressure and may other features but also connectivity to your server or other machine in line with industry 4.0.



P 250

### Quality and safety

- Fully enclosed test chamber
- Also suitable for static pressure testing of various hydraulic components such as valves, hydraulic cylinders, housings, quick-release couplings, etc.
- Safety switch - when the hood is opened, all pressure is automatically released within 1/10 second
- Environmentally friendly test medium (water-oil emulsion)
- Easy and safe to operate
- Quick changeover between automated and manual setup mode
- Test bench can be retrofitted with extension element
- Up to 120 tests per hour for a max. length of 2 500 mm (DN 12-800 mm)

### Innovative documentation management

- Time-saving product parameter memory
- Proper documentation and controlling
- Test reports printed on printer (optional)

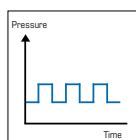
### CE compliant

- Hood with gas springs and transparent Makrolon® safety pane

We reserve the right to make technical changes without notice. Options are machine parts that can only be ordered while buying the machine.

## Package

P 250  
Machine  
+ Steck-O-Adapter 414.1000  
+ Anticorrosion additive EM CO - 18 kg



Dynamic test.



Steck-O-4 Fach



Hand clamping cone



P 250

Technical data	P 250
Test pressure	150 - 1 500 bar
Control	C.2 IPC
Drive	Intensifier
Flow rate (effectively)	7,5 L/min
Air supply	7 bar, 60 NI/min
Tank dimensions	2 194 x 890 x 470 mm
Test bench dimensions	2 700 x 1 450 x 1 550 mm
Reservoir capacity	120 L
Loading	250 kg
Weight	570 kg
Noise level	75 dBA
Electrical connection	3 VAC
Options	
High pressure	150 - 3 000 bar
Low pressure	20 - 1 500 bar
Stainless steel tank	✓
Extended version on request L x W x H (mm) Weight	2 220 x 1 000 x 1 400 420 kg



#### Steck-O adapter and screw connection:

1 x Steck-O up to 1500 bar:	414.1000
4 x Steck-O up to 1500 bar:	414.1012
1 x Screw connection up to 1500 bar:	414.1001
4 x Screw connection up to 1500 bar:	414.1011
1 x Screw connection up to 3000 bar:	414.1008
4 x Screw connection up to 3000 bar:	414.1013



#### Fast clamping system:

1 x Hand clamping cone up to 1500 bar:	414.1002
3 x Hand clamping cone up to 1500 bar:	414.1032
1 x Hand clamping cone up to 3000 bar:	414.1005
3 x Hand clamping cone up to 3000 bar:	414.1035
1 x Hydraulic clamping cone up to 1500 bar:	414.1003
3 x Hydraulic clamping cone up to 1500 bar:	414.1033
1 x Hydraulic clamping cone up to 3000 bar:	414.1004
3 x Hydraulic clamping cone up to 3000 bar:	414.1034

#### Tank Extension n°: 414.2100.0

Extension kit 1 x Steck-O:	414.1290
Extension kit 1 x Screw connection up to 1500 bar:	414.1290
Extension kit 1 x Screw connection up to 3000 bar:	414.1208
Extension kit 1 x Hand clamping cone up to 1500 bar:	414.1202
Extension kit 3 x Hand clamping cone up to 1500 bar:	414.1232
Extension kit 1 x Hand clamping cone up to 3000 bar:	414.1205
Extension kit 3 x Hand clamping cone up to 3000 bar:	414.1235
Extension kit 1 x Hydraulic clamping cone up to 1500 bar:	414.1203
Extension kit 3 x Hydraulic clamping cone up to 1500 bar:	414.1233
Extension kit 1 x Hydraulic clamping cone up to 3000 bar:	414.1204
Extension kit 3 x Hydraulic clamping cone up to 3000 bar:	414.1234



Hand quick cone system



Hydraulic quick cone system



Different cones


Extension of quick system  
to 3 lines

Barcode Scanner  
BCR CTR2C-Kit



With the P 300, you can perform precision tests of hoses of up to 2 500 mm in length and with pressures up to 1 000 bar. Test up to 120 hoses per hour, making use of 4 parallel test lines and our quick-clamping system. You can choose between automated and manual setup mode. Our P 350 test bench unifies our years of experience with your advanced requirements for special hose equipment. The extra-large test chamber gives you the space you need for your challenge. Pallets with hoses as well as large, heavy hose coils can be easily supplied to the chamber by forklift. Hose samples are connected easily with adapter hose and quick connection to pressure ports.



P 300



P 300 Aggregate



P 350

## Innovation and quality

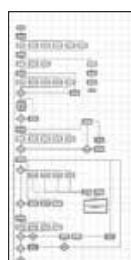
- 4 parallel test lines
- Combination of two test chambers (mirror arrangement) (optional)
- Fast workflow thanks to separately running test chambers (for alternate setup and testing)
- Quick-clamping system holding up to 4 hoses for parallel testing with customized settings
- Internal lighting system, adjustable machine feet and top-quality internal gear pump
- Quick changeover between automated and manual setup mode
- Separate portable power aggregate (with 2 m connecting hoses)
- Max. hose length 2 500 mm

## Safety and CE conformity

- Automatic closing of test chamber (P 300)
- Large inspection window made with transparent Makrolon®
- Display for bubble-free flooding on aggregate
- Customisable test logs and reports (for storage and printing)

We reserve the right to make technical changes without notice. Options are machine parts that can only be ordered while buying the machine.

## Control C.2: Accessories



Customized software



Barcode scanner

## Options



P 300 Aggregate - 2 NVA Control Unit for two test chambers



- 409.1 Deventilation of residual pressure
- 409.2 Manual door closing for tight circuit
- 409.3 Low pressure 50-1000 bar

## Technical Data



P 300



P 350

Technical data	P 300	P 350	Standard P 300
Test pressure	150 - 1 000 bar	150 - 1 000 bar	Sealing cone set
Control	C.2 IPC	C.2 IPC	USB interface/port
Drive	Diaphragm pump + Intensifier	Diaphragm pump + Intensifier	Pressure filter 12 µm
Flow rate (effectively)	5 L/min	12.5 L/min	Return filter 12 µm
Tank dimensions open/ closed	3 750 x 2 400 x 870 mm/ 3 750 x 1 450 x 870 mm	P 350 Container: External: 2 100 x 2 170 x 2 650 mm Internal: 1 950 x 1 950 x 2 200 mm P 350_Chamber-3 600: External: 4 100 x 950 x 1 325 mm Internal: 3 600 x 795 x 370 mm	Compressed air maintenance unit
Aggregate dimensions	830 x 740 x 1 340 mm	850 x 1 390 x 810 mm	
Reservoir capacity	120 L	P 350 Container: 1040 L, P 350_Chamber-3600: 330 L	
Colour	RAL 5012 Blue, RAL 7021 Grey	RAL 5012 blue/RAL 7021 grey/RAL 9002 grey-white	
Weight of tank	1 000 kg (empty)	P 350 Container: 650 kg P 350_Chamber-3 600: 390 kg	
Weight of power unit	210 kg (empty)	210 kg	
Noise level	75 dBA	75 dBA	
Max. hose length	up to 2 500 mm		
Test medium	Water-oil emulsion EM CO-18 kg	Water-oil emulsion EM CO-18 kg	
<b>Accessories</b>			
Pressure + return filter	✓	✓	
Air preparation unit	✓	✓	
Sealing cone set	✓	✓	
<b>Options</b>			
Second chambers are possible	✓	✓	



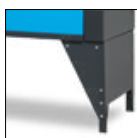
2 clamping discs per head, catering for various diameters (OD 8-42 mm).

For hose assembly up to DN 19 (3/4"). Other sizes on demand.

## Additional Information



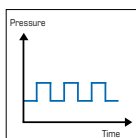
Sealing cone set (standard), DN 2.5 - 22 mm, 6 cones.



The height of the P 300 can be adjusted.



Axially adjustable quick-change system with adjustable rotating head.



Dynamic test.

- Rapid hose clamping system for the admission of up to four hoses with simultaneous checking (variable setting)
- Parallel test lines – four test lines per chamber
- Automatic starting of the given pressure values
- Two test chambers are possible – mirroring (one is loaded while a second chamber is testing)
- Test chamber standard size 3 600 mm
- Depending on different factors (flooding time, length + diameter of the hoses) you can test approx. 120 hoses per hour
- Adjustable height
- Fitting cones 3/4" (DN 2.5 – 22 mm) easy to change via simple unlinking (6 different cone sizes are available in standard package)