



mm

inch

Bar

Options and accessories

for crimpers



The new Control C.2 with its intuitive operation for UNIFLEX crimpers, test benches and several more products has a colour touch display. The new menus (Quick-Start-Menu and Production Menu) as well as the possibility to individualize each and every menu and application will make your work much easier. Everything can be controlled via HID, i.e. via Windows devices. In addition, you can record, monitor and assure the quality of your product and how the machine works via the PFM option.



Control C.2

Production management for serial production, production in line with your own processes

- Endless item memory increases productivity and consistency
- Item data easily searchable for faster set up of the next part. Data set filtering for faster production
- Data sets can be read in via scanner
- Scanner menus can be linked to your production data set
- Intuitive operation

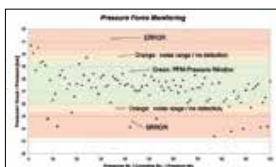
Service via network

- Simple organization of changes, maintenance and management of production data sets
- Central order management from the desktop saves time and money
- Windows based

Upload and download data

- Easily upload and download data using HID-compliant devices, such as external database, scanners, USB flash drive, Vernier calipers or remotely via the Internet

Inclusive: Pressure Force Monitoring



PFM – Standard on all machines with Control C.2

Quality-enhancing option for series production. With PFM, the upper and lower pressure limits can be set by adjusting the tolerance values obtained from test pressing. Pressures outside these limits are output as errors. It is possible to let the machine switch off at a fixed upper or lower limit, thereby obtaining a higher process safety. This way you can display and record combinations of incorrect hose and fittings, skipped work stage, such as skiving of the hose or a poorly positioned hose-fitting connection. Achieve integrated quality control without any additional effort.

Multistep



Industrial calculator



UDL



UDL (UNIFLEX) data logging

Crimping by Pressure



Accessories for C.2

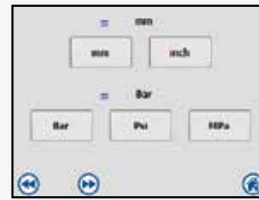
Start the machine and its control:

START Language



Language selection, other languages available upon request.

Units



Configuration units.

Different users are possible:

LOGIN User Login



Factory settings via user details and password with functionality assignments and user rights.

MENU Login by menu



Quick menu and production menu.

After Login, you have the choice: Quick Menu or Production Menu.

QUICK MENU



Input of the crimping dimensions, correction value and crimping dies (automatic).

PRODUCTION MENU



Four choices for selecting compression parameters quickly and easily. Selection menu includes pressing by dimension, by pressure, stored parameters in integrated database in the controller, or by use of a barcode scanner.

PRODUCTION MENU

- (1) Crimping by dimension (parameter)
- (2) By pressure (parameter)
- (3) Via the integrated database
- (4) Barcode scanner



Easily input crimping dimensions, correction value, hold time, aperture diameter, pre-selection of counter and crimping dies (automatic).



Easily input pressure, hold time, aperture diameter, pre-selection counter and crimping dies.



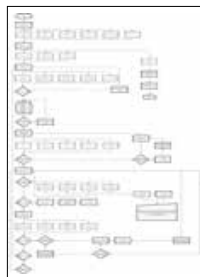
Search for and create articles numerically or alpha-numerically. Articles can be easily selected using the "Quick Search Menu".



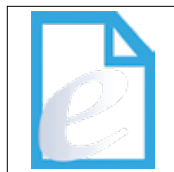
Scan article data via barcode. (accessories)

Option: Corporate programming as a special solution

Customized software



Paperless communication:



Communication with server or machine. Order management via digital interface.

XML/CSV interface:



External database connection. Allows you to retrieve and save the documented production data.

Operating mode configurations:



Communication with the server or with other machines.

Topics customized in line with corporate identity:



CI-compliant menus.

Accessories and Options

Accessories for C.2

Order number:
Calb CtrlC C.2 (software + hardware)



Calibrating your machine is simple using digital measurement via the software and the calibration mandrel.

Order number: Kit 800.610 + 800.606/Caliper Ctrl C 3 inch
or Kit 800.610 + 800.609/Caliper Ctrl C 4 inch



Measuring point menu with foot mouse/Vernier caliper (3 or 4"): Quality testing using calipers and foot mouse (as OK button). With the digital calipers, you can also check the crimping dimensions for conicity and ovality (number of measurement points). The pictogram-driven menu control guides you through the entire process.

Order number:
TA(A)



Depth stop

PS.2 Double



Double foot pedal

807.2



Screen protection

Order number:
BCR Ctrl C.2



Barcode scanner

800.610



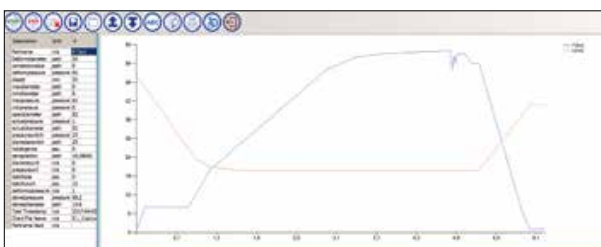
Foot mouse for controller interaction



RFID CTRCC

Options

PFC Pressure Force Control



The UNIFLEX PFC (Pressure Force Control) option offers two ways to stop a compression – based on the distance travelled or the applied force, as happens with PFC. Stopping a compression stroke due to applied force can meet certain application requirements, specifically those where material behavior must be taken into account. This also makes it possible to press brittle materials, such as fibre glass. Many industry-leading glass insulator producers are already using PFC profitably.

PFC provides readings of pressing power and pressing position at any time during the pressing process. These measurements are displayed and analysed graphically. On the basis of just a few test pressings, you will learn exactly how to have the machine produce the perfect final assembly. This process can then be repeated by setting the pressing force, the rate the force increases and the precise time to switch to stop. By saving these values to the controller, you can improve productivity through shorter set up time and consistent quality can be achieved, thereby dramatically increasing customer satisfaction and profitability.

Other options:

DMS (Strain Gauges) Order number: 807.602



Option for HM 3xx crimping machines.

Force measurement directly applied to the master dies. One or more sensors are installed according to the application and precision requested. This achieves a more precise crimping force and avoids variations due to the hydraulic system or friction. Advantages include faster detection of the insertion depth of the fitting, variations in the material, and hose tolerance. The position of the fitting can also be defined to reduce conicity.



Touch panel with 1800 mm cord.

Accessories and Options

ULS.2-C



ULS
(UNIFLEX labelling system)

ULS.2-APP for Tablet or PC



Tablet/iPhone Not provided.

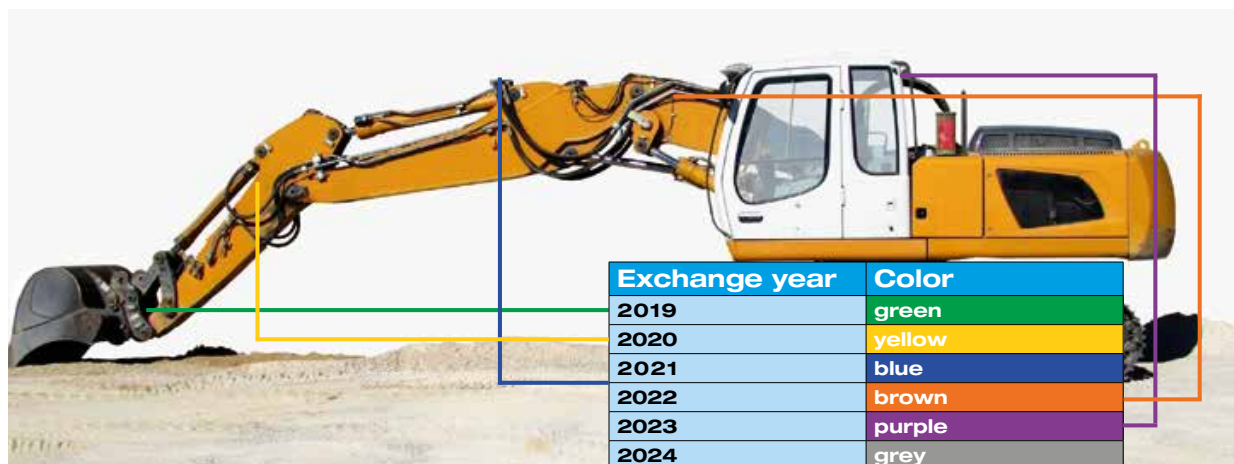
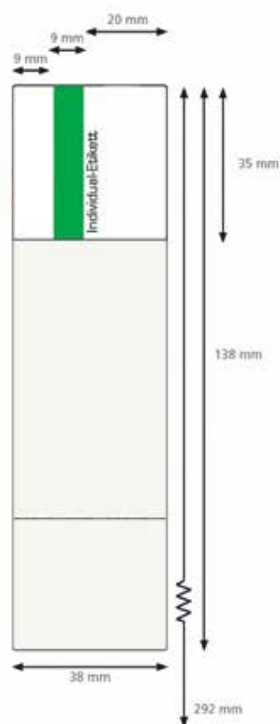
Advantages of Hose assembly Management

Benefits of labels and what they can tell the user:

- Which components need to be replaced and when
- The date of the exchange
- The potential hazards of the machine
- The plan for preventive maintenance
- Minimizes cost of maintenance
- Avoids equipment failures and long downtimes
- Publicity for your company

Uniflex Labelling System – ULS Ecoline

Part numbers ULS ECOLINE				
Pos.	Article	Content		Part No.
1	Printer			ULS.2-C ULS.2-APP to integrate with our control to use on mobile phone or tablet with an APP
2	Color ribbon for Printer	Cassette with labels, white (black) (74 meters)		888.469
3	Banderole	5000 pieces		Material
		Color bars	Banderole 138 mm	Banderole 292 mm
		Green	507.1_CP	507.1_XL_CP
		Yellow	507.2_CP	507.2_XL_CP
		Blue	507.3_CP	507.3_XL_CP
		Brown	507.4_CP	507.4_XL_CP
		Purple	507.5_CP	507.5_XL_CP
		Grey	507.6_CP	507.6_XL_CP



UNIFLEX Wireless Management System (UWMS)

UWMS (Uniflex wireless management system) allows you to put your crimping procedure on a server and keep this information up to date. Customers can access the information via an app on a phone or tablet connected to the internet and send it to the crimper by Bluetooth. All you need to do is change the dies. Crimp data and measurement information, such as the date, time, and the assembly serial number are automatically sent to your server or tablet via Bluetooth and are then available online.



Advantages:

- Keep customers up to date with the latest crimping specifications.
- Obtain valuable information about your crimper (No. of crimping operations, crimping specifications, crimping data)
- Use serial numbers to build traceability and reorder systems.
- Evaluate your market (what you sell, where you sell)

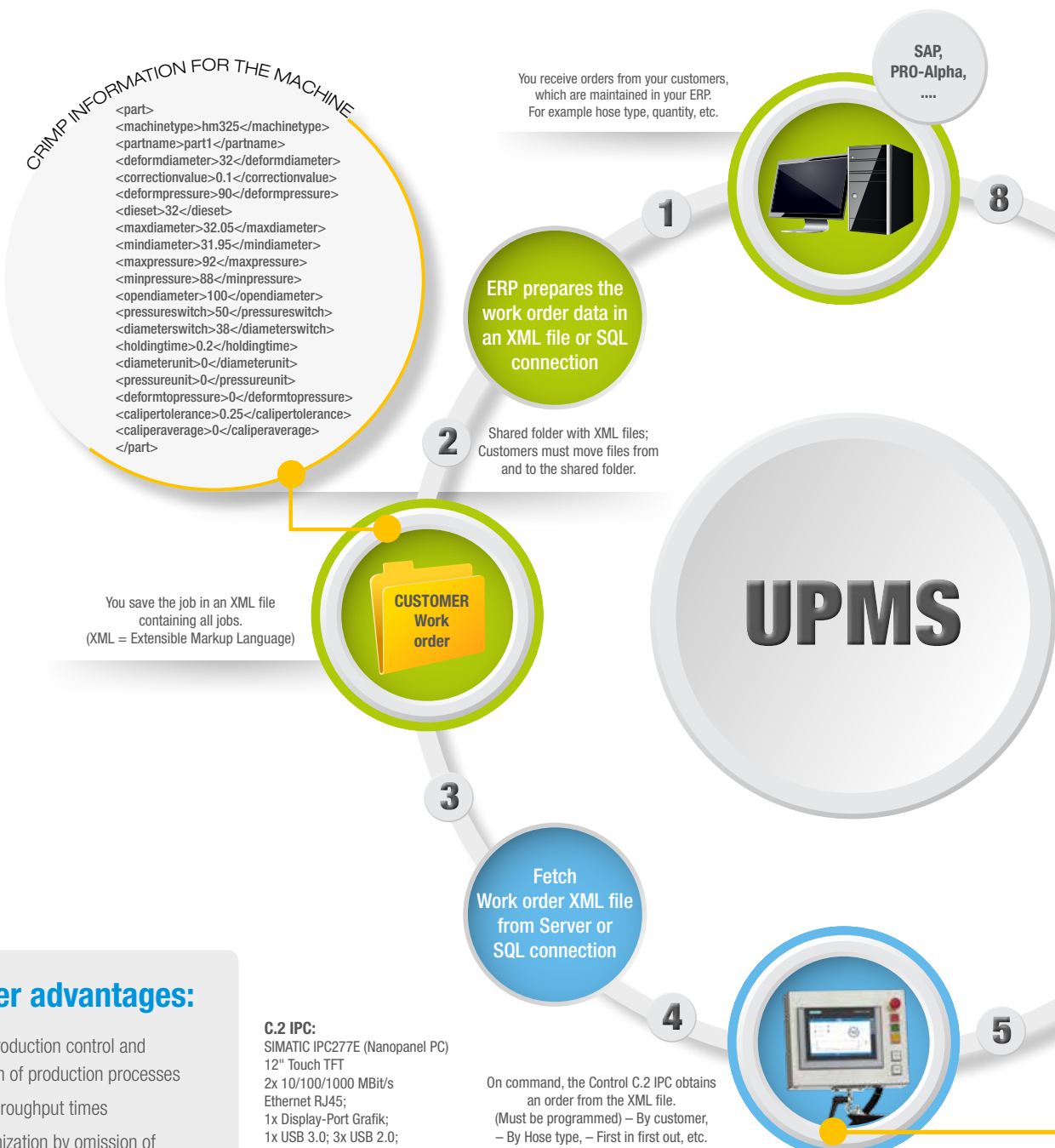
UPMS



UNIFLEX Paperless Management System (UPMS)

UNIFLEX has developed a complete Paperless Management for easily sending data directly from your ERP to a dashboard.

This allows you to manage all your machines by giving them working orders and retrieving production information from each machine. This gives you the flexibility to organize your production machine by machine (For example: the cutter can cut all



Customer advantages:

- Targeted production control and optimization of production processes
- Reduced throughput times
- Error minimization by omission of manual inputs
- Traceability of production data
- Statistical evaluation of production data

C.2 IPC:
 SIMATIC IPC277E (Nanopanel PC)
 12" Touch TFT
 2x 10/100/1000 MBit/s
 Ethernet RJ45;
 1x Display-Port Grafik;
 1x USB 3.0; 3x USB 2.0;
 1x seriell (COM 1);
 CFAST-Slot;
 Celeron N2807 (2C/2T)
 4 GB RAM
 Windows 7 Ultimate SP1, 64 Bit;
 MUI (de, en, fr, sp, it)
 80 GB SSD

hose sizes installed for customers, while at the same time you can decide to crimp according to individual orders and test the kitting order with the test bench.

The System returns all the relevant quality information you need to make sure your product is made to specifications. Stored data can be used not only for traceability but also for analyzing your productivity. This will optimize your production processes, reduce your administrative tasks and improve your quality control.

Customer's Work Element

UNIFLEX Work Element

RESULT DATA FROM THE MACHINE



```

- <batchsize>50</batchsize>
- <batchcount>24</batchcount>
- <diameter>31.98</diameter>
- <pressure>90.21</pressure>
- <now>5/3/2018 6:20:10 AM</now>
- <username>CrimperUser</username>
- .....
- .....
- .....
</part>
    
```

Fetch Production Data from XML File or SQL connection

7

Your ERP can then import the data from the XML file and import it into your system.

Crimp Data

The crimper sends all crimp data to the new XML file. (Diameter, pressure, holding time, ...) The crimper adds a record for each crimp. It contains all settings as well as the reached pressure, the achievable measure, counter, date and customized values.

6

Send XML file to Server or SQL connection

The machine tells the operator which dies to install and then crimping can start. (Visualization of the used parts and additional order details is possible)



Accessories and Options



QDS 239S, QDS 239 S or QDS 239 T

Store the dies directly at the machine. Can be mobile or bolted to the machine frame.



QDS 239 R

Store the dies directly at the machine. Can be mobile or bolted to wall or TU.



Oil Cooler

Reduce heat, increase permanent tolerances.



OCS 10 retro

Camera system – the alternative to the mirror, for a better sight line adjustment.



TU-Rack 18-PB239

Workbench for miscellaneous machines includes die storage.



QDS 239 B



SPIEGEL/SHS

Allows the operator to watch the correct position of the part to be crimped behind the machine.



LUF

Light for the rear side of the machine.



TA

To position the fitting inside the head and/or to activate the crimp cycle automatically.

Accessories and Options



QDC 239.5



PTS SYSTEM

Marking and crimping in one step according to DIN 20066 and EN 853, EN 854, EN 856, EN 857.

PTS 52: character 4,0 x 2,0 mm/marketing depth ca. 0,3 - 0,5 mm

PTS 32: character 3,0 x 1,5 mm/marketing depth ca. 0,3 mm

Dies	Ø mm
261	14 - 47
263	14 - 32
265	54 - 71
266 L	54 - 78
239/239 L	14 - 50
232 L	14 - 90
237 L	54 - 121
554/246 L	on request

Number of characters

P 200, 202, 204, 213, 261, 265
always 10 each

P 262 /263
Ø 14 - 32 = 17 each

P 239
Ø 14 - 24 = 12 each
Ø 26 - 50 = 17 each

P 239L or P239-xx-Øyy
Ø 14 - 22 = 14 each
Ø 24 - 40 = 15 each
Ø 44 - 50 = 10 each

P 232L
Ø 17 - 20 = 21 each
Ø 24 - 28 = 22 each
Ø 32 - 44 = 24 each
Ø 47 - 62 = 10 each
Ø 67 - 90 = 11 each

P 237L
Ø 54 - 67 = 24 each
Ø 71 - 121 = 11 each

P 266L
Ø 54 - 78 = 10 each


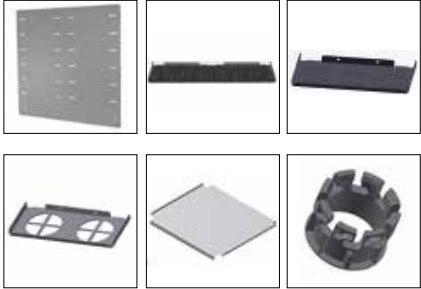













UMAT

Mobile Working Station

L x W x H (mm): 800 x 1200 x 755
Weight 160 kg
Drawers L x W x H (mm):
2 = 564 x 572 x 50
2 = 564 x 572 x 100
Load Weight Drawers: 75 kg

Accessories
TU-QDS F SHELF
TU-QDS F 239I
TU-QDS SHELF PB280

Die Storage and Accessories

Description		For	Accessories
TU Work Bench capable of supporting up to 800 kg		Universal	
TU-QDS F Basic Basic with screws		Universal work bench TU	
TU-QDS FXL Shelf Variable with screws		TU-QDS F Basic	
TU-QDS F Shelf Variable with screws		TU-QDS F Basic QDS-S.2 single row QDS-S-2 double row	
TU-QDS F 239i 3 pieces in set		TU-QDS FXL Shelf TU-QDS F Shelf	
TU-QDS F Shelf PB280 for PB 280		TU-QDS F Basic QDS-S.2 single row QDS-S-2 double row	
QDS-S.2 single row Basic Support		HM 220.3 HM 225.3	
QDS-S-2 double row Basic Support		HM3xx.2 S6.3A+C S8.2/S8.3 S10.2/S10.3 HM245.4	
QDS 237.239S RAL5012 Basic Support with TU-QDS 239i		HM3xx ab Bj.2010, HM3xx.2 S6.3 S8.2/S8.3 S10.2/S10.3 HM 245.2/HM 245.3/HM 245.4	

Description		For
<p>QDS 239 S Basic Support with TU-QDS 239i</p>		<p>HM3xx ab Bj, 2010, HM3xx.2; HM220, HM220.2, HM220.3 HM225, HM 225.2, HM225.3 S6, S6.2, S6.3 S8, S8.2, S8.3 S10, S10.2, S10.3</p>
<p>QDS 280 B RAL 7021 For 9 Set PB 280</p>		<p>PB 280</p>
<p>QDS 239 B RAL 7021 For 9 Set PB 239</p>		<p>PB 239</p>
<p>QDS 239 R For 9 set PB 239</p>		<p>TU</p>
<p>QDS 239 C Wheeled support for 12 set PB 239</p>		<p>PB 239 PB 237</p>
<p>QDS 239 T Wheeled support for 24 set PB 239</p>		<p>PB 239 PB 237</p>
<p>TROLLEY Wheeled support 777.B LxWxH (mm): 1720 x 660 x 200 Weight: 75 kg Load Weight: 800 Kg</p>		<p>HM 3xx, HM 220/225, HM 245, S6/S8/10 EM 115</p>