

P 300 | 350



With the P 300, you can perform precision tests of hoses of up to 2 500 mm in length and with pressures up to 1 000 bar. Test up to 120 hoses per hour, making use of 4 parallel test lines and our quick-clamping system. You can choose between automated and manual setup mode. Our P 350 test bench unifies our years of experience with your advanced requirements for special hose equipment. The extra-large test chamber gives you the space you need for your challenge. Pallets with hoses as well as large, heavy hose coils can be easily supplied to the chamber by forklift. Hose samples are connected easily with adapter hose and quick connection to pressure ports.



P 300



P 300 Aggregate



P 350

Innovation and quality

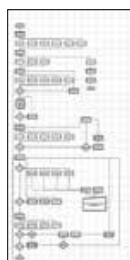
- 4 parallel test lines
- Combination of two test chambers (mirror arrangement) (optional)
- Fast workflow thanks to separately running test chambers (for alternate setup and testing)
- Quick-clamping system holding up to 4 hoses for parallel testing with customized settings
- Internal lighting system, adjustable machine feet and top-quality internal gear pump
- Quick changeover between automated and manual setup mode
- Separate portable power aggregate (with 2 m connecting hoses)
- Max. hose length 2 500 mm

Safety and CE conformity

- Automatic closing of test chamber (P 300)
- Large inspection window made with transparent Makrolon®
- Display for bubble-free flooding on aggregate
- Customisable test logs and reports (for storage and printing)

We reserve the right to make technical changes without notice. Options are machine parts that can only be ordered while buying the machine.

Control C.2: Accessories



Customized software



Barcode scanner

Options



P 300 Aggregate - 2 NVA Control Unit for two test chambers



- 409.1 Deventilation of residual pressure
- 409.2 Manual door closing for tight circuit
- 409.3 Low pressure 50-1000 bar

Technical Data



P 300

P 350

Technical data	P 300	P 350
Test pressure	150 - 1 000 bar	150 - 1 000 bar
Control	C.2 IPC	C.2 IPC
Drive	Diaphragm pump + Intensifier	Diaphragm pump + Intensifier
Flow rate (effectively)	5 L/min	12.5 L/min
Tank dimensions open/closed	3 750 x 2 400 x 870 mm/ 3 750 x 1 450 x 870 mm	P 350 Container: External: 2 100 x 2 170 x 2 650 mm Internal: 1 950 x 1 950 x 2 200 mm P 350_Chamber-3 600: External: 4 100 x 950 x 1 325 mm Internal: 3 600 x 795 x 370 mm
Aggregate dimensions	830 x 740 x 1 340 mm	850 x 1 390 x 810 mm
Reservoir capacity	120 L	P 350 Container: 1040 L, P 350_Chamber-3600: 330 L
Colour	RAL 5012 Blue, RAL 7021 Grey	RAL 5012 blue/RAL 7021 grey/RAL 9002 grey-white
Weight of tank	1 000 kg (empty)	P 350 Container: 650 kg P 350_Chamber-3 600: 390 kg
Weight of power unit	210 kg (empty)	210 kg
Noise level	75 dBA	75 dBA
Max. hose length	up to 2 500 mm	
Test medium	Water-oil emulsion EM CO-18 kg	Water-oil emulsion EM CO-18 kg
Accessories		
Pressure + return filter	✓	✓
Air preparation unit	✓	✓
Sealing cone set	✓	✓
Options		
Second chambers are possible	✓	✓

Standard P 300
Sealing cone set
USB interface/port
Pressure filter 12 µm
Return filter 12 µm
Compressed air maintenance unit

Standard P 350
Quick connector set (SSKV)
Automatic pressure control
Pressure filter 5 µm
Suction filter 100 µm
Anticorrosion additive EM 10 L
Fluid flow inspection glass
Integrated tank

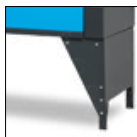


2 clamping discs per head, catering to various diameters (OD 8-42 mm).
For hose assembly up to DN 19 (3/4").
Other sizes on demand.

Additional Information



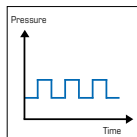
Sealing cone set (standard), DN 2.5 - 22 mm, 6 cones.



The height of the P 300 can be adjusted.



Axially adjustable quick-change system with adjustable rotating head.



Dynamic test.

- Rapid hose clamping system for the admission of up to four hoses with simultaneous checking (variable setting)
- Parallel test lines – four test lines per chamber
- Automatic starting of the given pressure values
- Two test chambers are possible – mirroring (one is loaded while a second chamber is testing)
- Test chamber standard size 3 600 mm
- Depending on different factors (flooding time, length + diameter of the hoses) you can test approx. 120 hoses per hour
- Adjustable height
- Fitting cones 3/4" (DN 2,5 – 22 mm) easy to change via simple unlinking (6 different cone sizes are available in standard package)