

KS 6 | KS 8 | KS 10



The UNIFLEX KS 6, KS 8 and KS 10 are designed for precision crimping and calibration.



KS 6, KS 8, KS 10

High-level components and system solutions

Slide bearing technology

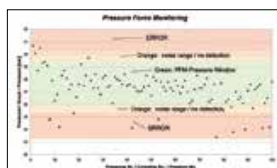
- Grease-free for extra cleanliness and prolonged service life
- Maximised productivity at very low operating costs
- Chips brush off easily, minimising tool wear
- Clean machining area
- Reduces crimping force loss by up to 20%
- High process stability and reproducible accuracy

CE compliant

We reserve the right to make technical changes without notice. Options are machine parts that can only be ordered while buying the machine.

Standard – Pressure Force Monitoring

PFM – Standard on all machines with Control C.2



Quality-enhancing option for series production. With PFM, the upper and lower pressure limits can be set by adjusting the tolerance values obtained from test pressing. Pressures outside these limits are output as errors. It is possible to let the machine switch off at a fixed upper or lower limit, thereby obtaining a higher process safety. This way you can display and record combinations of incorrect hose and fittings, skipped work stage, such as skiving of the hose or a poorly positioned hose-fitting connection. Achieve integrated quality control without any additional effort.

Standard



PS Double foot pedal

Technical Data



KS 6, KS 8, KS 10

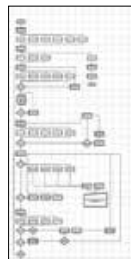
Technical data	KS 6	KS 8	KS 10
Crimp force (kN/Ton)	500/50	800/80	1 800/180
No grease: 20% less friction	✓	✓	✓
Control	Control C.2	Control C.2	Control C.2
Max. crimping range	55 mm	139 mm	139 mm
Opening	+25 mm	+45 mm	+45 mm
Opening without dies	95 mm	190 mm	190 mm
Type of dies	PBK 239	PBK 237	PBK 237
Speed (mm/sec)			
Close	12	7	3,5
Crimp	12	7	3,5
Open	30	15	6
Noise level	58 dBA	58 dBA	58 dBA
Drive	5,5 kW 3 VAC	5,5 kW 3 VAC	5,5 kW 3 VAC
Oil	80 L	80 L	80 L
L x W x H (mm)	1 000 x 1 000 x 1 700	1 000 x 1 000 x 1 700	1 000 x 1 000 x 1 700
Weight	470 kg	570 kg	570 kg

Type of dies		
	PBK 239	PBK 237
Ø mm	mm	mm
12	3	3
14	3	3
16	4	4
19	4	4
22	4,5	4,5
24	4,5	4,5
26	4,5	4,5
28	4,5	4,5
32	5	5
36	5	5
40	5	5
44	5	5
47	5	5
50		5
54		5
57		5
62		5
67		5
71		5
74		5
78		5
84		5
86		5
90		5
96		5
103		5
106		5

Accessories Control C.2: Accessories



OC K56/K58 MVA



Customized software



Electronic caliper



Calibration mandrel



Barcode scanner



UTS/UDL
Data transfer



ULS
UNIFLEX label system



807.2
Screen protector