



With their distinctive construction and high crimping force of up to 12000 kN, the HM 660, HM 665 and HM 1200 are some of UNIFLEX's powerhouses. They set the standard for quality and cost effectiveness. Using one of these models, you can easily crimp up to 12"-industrial hoses (according to the fitting).



HM 665

### Engineered solutions using quality components

- Smaller machine increases ergonomics
- HiLo cylinder - Maximum efficiency causing less heat
- Noiseless high-quality pump
- Full length of fittings crimped in one stroke increases product quality and production efficiency
- Lateral reinforcement optimizes overall tolerance

### Fixed 6- o'clock die

- Workpiece does not move, making it easier to position laterally
- Increases productivity, driving up profitability
- Reduces risk for injuries

### Slide bearing technology

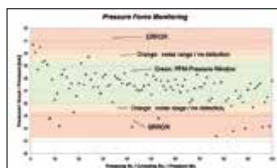
- No greasing improves cleanliness of machine and prolongs its lifetime
- Maximum productivity with very low maintenance costs
- Flaking cannot stick in grease, no risk of prematurely damaging the crimping head
- End product can be used in sanitary applications without cleaning
- 20% more capability for crimping stronger or more difficult couplings versus our competition's equivalent crimpers
- Consistently accurate crimp result

### CE compliant

We reserve the right to make technical changes without notice. Options are machine parts that can only be ordered while buying the machine.

## Pressure Force Monitoring

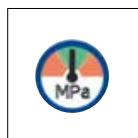
**PFM – Standard on all machines with Control C.2**



Quality-enhancing option for series production. With PFM, the upper and lower pressure limits can be set by adjusting the tolerance values obtained from test pressing. Pressures outside these limits are output as errors. It is possible to let the machine switch off at a fixed upper or lower limit, thereby obtaining a higher process safety.



Multistep



Crimping by Pressure



Industrial calculator

**UDL included with Control C.2**





HM 660 | HM 1200

HM 665

## Technical Data

### Additional Information



Due to the long master dies, you can crimp virtually all types of fittings.



The fixed 6- o'clock die makes safe and low-force positioning of the workpiece possible, which improves cost effectiveness as well as safety.

Technical data	HM 660	HM 665	HM 1200
Crimp force (kN / Ton)	8 000/800	6 000/600	12 000/1 200
No grease: 20% less friction	✓	✓	✓
Control	Control C.2 + Touch	Control C.2 + Touch	Control C.2 + Touch
SAE R 15/4SH* 1 piece fitting	3"	3"	3"
SAE R 15/4SH* 2 piece fitting	3"	3"	3"
Industrial	10"	12"/16"*	10"
90° Elbows	3"	3"	3"
Max. Crimp range	325 mm**	450 mm**	325 mm**
Opening	+120 mm	+180 mm	+120 mm
Opening without dies	395 mm	580 mm	395 mm
Master dies length (mm)	200 mm	250 mm	200 mm
Type of dies	246/237L/239-xx-Ø-yy	298/247/245/237L/239-xx-Ø-yy	246/237L/239-xx-Ø-yy
Speed (mm/sec)			
Close	15	17	11
Crimp	2	0,9	1,5
Open	15	25	11
Noise level	69 dBA	69 dBA	69 dBA
Drive	18,5 kW 3 VAC	5,5 kW 3 VAC	18,5 kW 3 VAC
Oil	300 L	400 L	300 L
L x W x H (mm)   Machine + Power Unit	1 400 x 1 050 x 2 470	1800 x 970 x 2400	1 400 x 1 130 x 2 660
L x W x H (mm)   Machine + Power Unit	700 x 1 160 x 1 360	integrated	1 100 x 1 300 x 1 500
Weight	4200 kg + 450 kg	5000 kg	4480 kg + 450 kg
HiDS (High Pressure Pump Dynamic Suction)	✓	✓	✓

\* Layflat hoses with special dies.

\*\* According to the fitting.

Type of dies	Type of dies	Type of dies	Type of dies
<b>239-xx-Ø-yy</b>	<b>237 L</b> <b>246</b>	<b>298</b>	<b>247</b>
Ø mm	mm	Ø mm	mm
6,8	50	200	250
9	50	220	250
10	50	240	250
12	65	260	250
14	65	280	250
16	65	300	250
17	65	320	250
19	65	340	250
20	65	360	250
22	65	380	250
24	65		
26	65		
28	80		
30	80		
31	80		
32	80		
34	80		
36	80		
38	80		
39	80		
40	80		
44	80		
47	100		
50	100		
54	100		
57	100		
62	100		
		<b>Type of dies</b>	
			<b>245</b>
		Ø mm	mm
		103	130
		106	130
		111	130
		116	130
		121	130
		126	130
		131	130
		136	130
		146	150
		156	150
		170	150
		185	150
		200	150

## Accessories

## Control C.2: Accessories



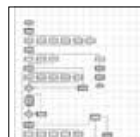
PTS



QDS 239 C



QDS 239 R



Customized software



Electronic caliper



Calibration mandrel



Barcode scanner



TA (A)



OCS



LUF



Oil Cooler  
OC HM xxx



PS Double foot pedal



RFID



ULS



807.2



DMS