

HM 325 | HM 375 | HM 380 | HM 400



As reliable classic machines, the HM 3xx/HM 400 series unites all the outstanding properties of a production crimper. They are compact, powerful and make ergonomic working possible. Combining a convincingly solid construction with a high level of user friendliness, and long service life, the HM 3xx/HM 400 set a new standard for quality and cost effectiveness.



HM 325 | HM 375 | HM 380



HM 400

Engineered solutions using quality components

- Smaller machine increases ergonomics
- HiLo cylinder - Maximum efficiency causing less heat
- Noiseless high-quality pump
- Full length of fittings crimped in one stroke increases product quality and production efficiency
- Lateral reinforcement optimizes overall tolerance

Fixed 6- o'clock die

- Workpiece does not move, making it easier to position laterally
- Increases productivity, driving up profitability
- Reduces risk for injuries

Slide bearing technology

- No greasing improves cleanliness of machine and prolongs its lifetime
- Maximum productivity with very low maintenance costs
- Flaking cannot stick in grease, no risk of prematurely damaging the crimping head
- End product can be used in sanitary applications without cleaning
- 20% more capability for crimping stronger or more difficult couplings versus our competition's equivalent crimpers
- Consistently accurate crimp result

CE compliant

We reserve the right to make technical changes without notice. Options are machine parts that can only be ordered while buying the machine.

Package



QDS 239 B



GDC 239.5

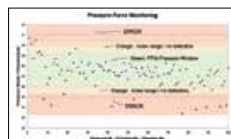
Package = Machine
+ PB Ø 17, 20, 24, 28,
32, 40, 44, 50, 57, 71
+ 237.239.2L2
+ GDC 239.5
+ QDS 239 B
+ Control C.2



TA (A)

Pressure Force Monitoring

PFM – Standard on all machines with Control C.2



UDL included with Control C.2

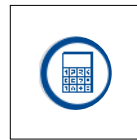
Quality-enhancing option for series production. With PFM, the upper and lower pressure limits can be set by adjusting the tolerance values obtained from test pressing. Pressures outside these limits are output as errors. It is possible to let the machine switch off at a fixed upper or lower limit, thereby obtaining a higher process safety.



Multistep



Crimping by Pressure



Industrial calculator

Accessories



PTS



LUF

Technical Data



HM 325 | HM 375 | HM 380



HM 400

Additional Information



The compact, narrow and ergonomic construction makes working on both sides possible.



The fixed 6- o'clock die makes safe and low-force positioning of the workpiece possible, which improves cost effectiveness as well as safety.



With the Barcode Scanner you can scan articles quickly and efficiently.

Technical data	HM 325	HM 375	HM 380	HM 400 NEW
Crimp force (kN / Ton)	2 800/280	3 150/315	3 400/340	3 750/375
No grease: 20% less friction	✓	✓	✓	✓
Control	Control C.2 + Touch	Control C.2 + Touch	Control C.2 + Touch	Control C.2 + Touch
SAE R 15/4SH 1 piece fitting*	2"	3"	3"	3"
SAE R 15/4SH 2 piece fitting*	2"	2½"	3"	3"
Industrial*	4"	4"	4"	6"
90° Elbows*	3"	3"	3"	3"
Max. Crimp range**	165 mm**	165 mm**	165 mm**	190 mm**
Opening	+70 mm	+70 mm	+70 mm	+130 mm
Opening without dies	215 mm	215 mm	215 mm	300 mm
Master dies length (mm)	126 mm	126 mm	126 mm	150 mm
Type of dies	237 L/239-xx	237 L/239-xx	237 L/239-xx	554/239-xx
Speed (mm/sec)				
Close	23	23	23	18
Crimp	1,4	1,4	1,3	1,4
Open	33	33	33	20
Noise level	69 dBA	62 dBA	62 dBA	62 dBA
Drive	4 kW 3 VAC	4 kW 3 VAC	4 kW 3 VAC	5,5 kW 3 VAC
Oil	100 L	100 L	100 L	260 L
L x W x H (mm)	1 200 x 600 x 1 700	1 200 x 600 x 1 700	1 200 x 600 x 1 700	630 x 1500 x 1 800
Weight	750 kg	750 kg	750 kg	1400 kg
CGS (Conicity Guard System)	✓	✓	✓	-
HIDS (High Pressure Pump Dynamic Suction)	✓	✓	✓	✓

Type of dies		Type of dies		Type of dies	
239-xx-Ø-yy		237 L		554	
Ø mm	mm	Ø mm	mm	Ø mm	mm
6,8	50	54	118	57	120
9	50	57	118	62	120
10	50	62	118	67	120
12	65	67	118	71	120
14	65	71	118	74	120
16	65	74	118	78	120
17	65	78	118	84	120
19	65	84	118	86	120
20	65	86	118	90	120
22	65	90	118	96	120
24	65	96	118	103	120
26	65	103	118	106	150
28	80	106	126	111	150
30	80	111	126	116	150
31	80	116	126	121	150
32	80	121	126	126	150
34	80	126	126	131	150
36	80	131	126	136	150
38	80			146	150
39	80			156	150
40	80				
44	80				
47	100				
50	100				
54	100				
57	100				
62	100				

* According to the fitting.
** With master dies.

Accessories

Control C.2: Accessories



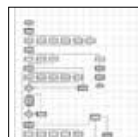
GDS 239 S



GDS 239 C



GDS 239 R



Customized software



Electronic caliper



Calibration mandrel



Barcode scanner



TA (A)



OCS



SHS



Oil Cooler
OC HM xxx



PS Double foot pedal



RFID



ULS



807.2



DMS