



Due to its narrow and innovative construction, high level of user friendliness and long service life, the S 6 sets new standards for quality and cost effectiveness. Its compact construction allows for ergonomic working. The use of long master dies allows you to crimp 90° elbow fittings up to 2" with the tried and tested greaseless slide bearing technology, which reduces maintenance costs and increases the product quality.



S 6

Large opening

Openly built for easy crimping of even 90° elbow pieces, without having to remove all the dies

Big crimping tool

Crimping of 3"-industry hoses is possible

Compact Design

Fits in any workshop

Slide bearing technology

No greasing improves cleanliness of machine and prolongs its lifetime

Maximum productivity with very low maintenance costs

Flaking cannot stick in grease, no risk of prematurely damaging the crimping head

End product can be used in sanitary applications without cleaning

20% more capability for crimping stronger or more difficult couplings versus our competition's equivalent crimpers

Consistently accurate crimp result

ECOLINE Version

High quality for those new to crimping

CE compliant



S 6 Ecoline C.2



S 6 Ecoline



S 6 L Mobileline

We reserve the right to make technical changes without notice. Options are machine parts that can only be ordered while buying the machine.

Package

Accessories



QDS 239 B



QDC 239.5

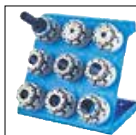
Package = Machine
+ PB Ø 17, 20, 24, 28, 32, 40, 44, 50, 57, 71
+ 266.239L
+ QDC 239.5
+ QDS 239 B



TA (A)



QDS 239 C



QDS 239 R



QDS 239 S



PS Double foot pedal
(Only S 6. Not Ecoline & light models).



TU Work Bench



LUF



TU Rack PB239



SHS



PTS

Technical Data



S 6 Ecoline

S 6

S 6 L Ecoline

S 6 L Mobileline

Technical data	S 6 Ecoline	S 6	S 6 L Ecoline	S 6 L Mobileline
Crimp force (kN / Ton)	2000/200	2000/200	2400/240	2400/240
No grease: 20% less friction	✓	✓	✓	✓
Control	Control A	Control A	Control A	Control A
SAE R 15*/4SH 1 piece fitting	2"	2"	2"	2"
4 SH* 2 piece fitting	2"	2"	2"	2"
SAE R 15* 2 piece fitting	1½"	1½"	1½"	1½"
Industrial	3"	3"	3"	3"
90° Elbows	2"	2"	2"	2"
Crimp range	100 mm	100 mm	100 mm	100 mm
Opening	+45 mm	+45 mm	+41 mm	+41 mm
Opening without dies	147 mm	147 mm	143 mm	143 mm
Master dies length (mm)	110 mm	110 mm	110 mm	110 mm
Type of dies	239 - xx/266**	239 - xx/266**	239 - xx/266**	239 - xx/266**
Speed (mm/sec)				
Close	4,9	9,7	30/1,8	10/0,5
Crimp	2,3	2,2	1,8	0,5
Open	8,2	16	10,6/30	3/30
Noise level	69 dBA	69 dBA	69 dBA	69 dBA
Drive	4 kW 3 VAC	4 kW 3 VAC	3 kW 3 VAC	1,8 kW 1 VAC
Oil	50 l	70 l	35 l	4 l
L x W x H (mm)	700 x 600 x 735	745 x 600 x 1360	600 x 550 x 750	505 x 430 x 490
Weight	275 kg	456 kg	196 kg	172 kg
Options				
12 VDC/24 VDC	–	–	–	✓
1 Phase	✓	–	✓	✓
3 Phase	–	–	–	–
Control C.2	✓	✓	✓	–

* According to the fitting

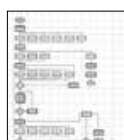
** Without intermediate dies

Type of dies		
239-xx-β-yy	266	
Ø mm	mm	mm
6,8	50	
9	50	
10	50	
12	65	
14	65	
16	65	
17	65	
19	65	
20	65	
22	65	
24	65	
26	65	
28	80	
30	80	
31	80	
32	80	
34	80	
36	80	
38	80	
39	80	
40	80	
44	80	
47	100	
50	100	
54	100	
57	100	
62	100	110
67		110
71		110
74		110
78		110
84		110
86		110
92		110

Control C.2: Accessories

C.2

Additional Information



Customized software



Electronic caliper



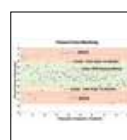
Calibration mandrel



Barcode scanner



Multistep included with Control C.2



PFM included with Control C.2



The micrometer allows you to easily set the crimping dimensions.


The 12 VDC/24 VDC units offer space- and weight-saving application options, e.g. for fitting service trucks.
L x W x H (mm)
441 x 291 x 296
21 kg


The S 6 series can be used to crimp short 90° elbow fittings with a long drop. This is impossible for other conventional machines.



PS Double foot pedal



RFID



ULS



807.2



Crimping by Pressure included with Control C.2



UDL included with Control C.2