



Schrader Range

Quick Acting Pneumatic Couplings

Schrader original range

InterCheck range

Mini range

Euro range

Catalogue 2167GB-ca



Quick Acting Couplers

Profile Overview

Quick Acting Couplers

The self sealing quick acting coupler known as the Check Unit and plug-in Adaptor was originally promoted as an indispensable item of equipment for the use of industrial compressed air by the Schrader company. Over the years the Schrader Check Unit and Adaptor has become a 'customer point of reference', most competitive units being referred to as 'Schrader' units.

This famous brand name lives on in the 'Schrader Original' series of Check Units and Adaptors, available in both Standard and Heavy Duty ranges from Parker Pneumatic.

The original design was imitated around the world, resulting in a wide variety of adaptor profiles developed to suit local markets. In recent years the, 'Industry Interchangeable Profile' has become widely accepted and is now available from Parker Pneumatic to complement the Schrader Original series.

The complete programme of Check Units with Industry Interchangeable Adaptor Profiles, includes the InterCheck 35 and 55 Series, the Schrader Mini Series and the Schrader *Euro* Series.

Adaptor Profiles

Series	Profile	Interchangeable with	Page No.
Schrader Original Standard			3 / 4 / 5
Schrader Original Heavy Duty			6 / 7
Schrader InterCheck 35		CEJN 320 Rectus 254 Euro Standard	9 / 10 / 11
Schrader InterCheck 55		CEJN 410 Rectus 27	12 / 13
Schrader Mini			14 / 15
Schrader Euro		ARO 210, ORION CEJN 300	16 / 17

Quick Acting Couplers

Schrader Original

- ˆ Twistlok or sleeve action
- ˆ Wide choice of adaptors
- ˆ Non swivel coupling available
- ˆ Non whip adaptors
- ˆ Rugged design



Twistlok Units

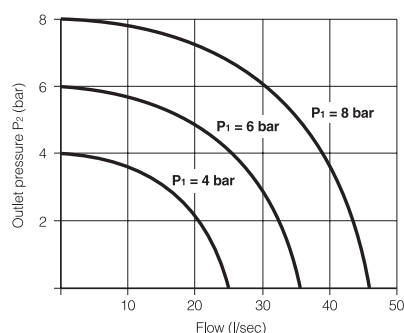
Designed for single hand connection or disconnection. A twist on the cap will release the adaptor and the airline is automatically resealed. When coupled the check unit allows the adaptors to swivel, to eliminate kinking of the hose. The exception to this is the non-swivel check unit which features a special sleeve designed to facilitate disconnection simply by twisting the hose.

Materials

Body	Aluminium
Washer holder	Brass chrome plated
Spring	Stainless steel
Deflector	Brass
Sleeve	Steel zinc plated
Seals	Nitrile (viton on request)
Adaptors	Plated mild steel

Flow Rates

Pressure vs Flow
Schrader Standard 1/4 Female Coupling



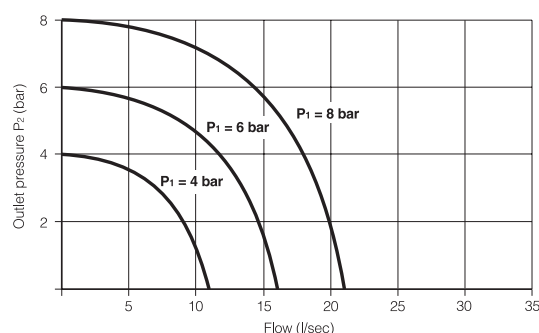
Sleeve Action Units

The sleeve action design provides added security requiring two hand operation before the adaptor is connected, with single handed release. When coupled, the check unit allows the adaptors to swivel, to eliminate kinking of the hose.

Operating Information

	Standard	Heavy Duty
Pressure range	Partial vacuum to 17 bar	Partial vacuum to 17 bar
Temperature range	-10°C to +80°C	-10°C to +80°C
Fluids	Air	Air
Q max	23.6 l/s	51.9 l/sec
Cv	1.07	1.9

Pressure vs Flow
Schrader Heavy Duty 1/2 Female Coupling



Quick Acting Couplers

Schrader Original

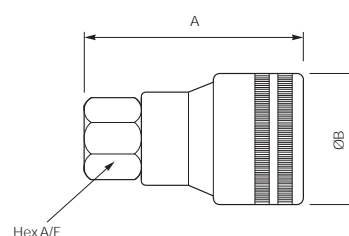
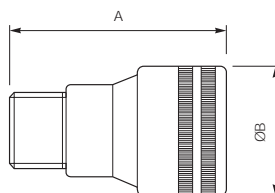
Twistlok Standard Check Units



Profile



Symbol



Order Code	Pack Qty	Connection	Weight (g)	Dimensions		
				A	ØB	Hex A/F
8952DL-12	1	G1/4 Female (BSPP)	120	45	30	17,5
9793D-12	1	R1/4 Male (BSPT)	132	55	30	18,0
9792D-12	1	R3/8 Male (BSPT)	138	55	30	18,0
8950CL-12	1	Non Swivel R1/4 Female (BSPT)	114	50	27	13,0

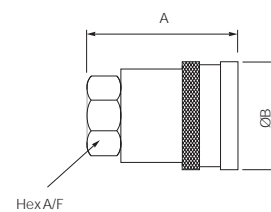
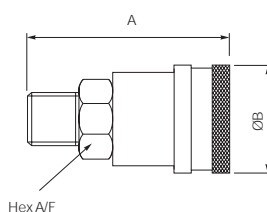
Sleeve Action Standard Check Units



Profile



Symbol



Order Code	Pack Qty	Connection	Weight (g)	Dimensions		
				A	ØB	Hex A/F
7122	1	G1/4 Female (BSPP)	96	46,0	26	17,5
7123	1	G3/8 Female (BSPP)	108	52,5	26	21,0
7132	1	R1/4 Male (BSPT)	106	56,5	26	18,0
7133	1	R3/8 Male (BSPT)	110	60,0	32	25,5

Quick Acting Couplers

Schrader Original

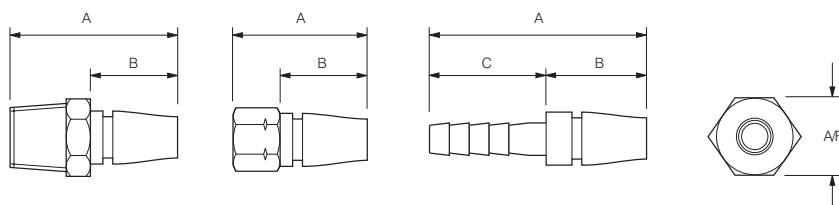
Standard Adaptors



Profile



Symbol



Order Code	Pack Qty	Connection		Weight (g)	Dimensions			
					A	B	C	Hex A/F
8051B-11	5	R1/8 Male	(BSPT)	15	42	24,5	-	14,0
8050B-11	5	R1/4 Male	(BSPT)	20	44	24,5	-	14,0
2047B	5	G1/8 Female	(BSPP)	26	42	24,5	-	14,0
8278L-11	5	G1/4 Female	(BSPP)	34	46	31,0	-	17,5
8787-11	5	1/4" (6mm)	Hose Tail	22	57	30,0	27	14,0
9750-11	5	5/16" (8mm)	Hose Tail	24	57	30,0	27	14,0
8788-11	5	3/8" (10mm)	Hose Tail	24	57	30,0	27	14,0
9031	1	G1/4 Female Non-whip	(BSPP)	48	55	31,0	-	17,5

Quick Acting Couplers

Schrader Original

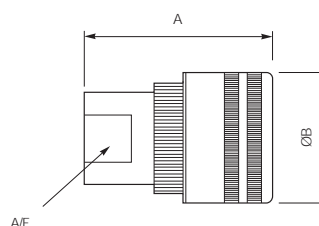
Twistlok Heavy Duty Check Units



Profile



Symbol



Order Code	Pack Qty	Connection	Weight (g)	Dimensions		
				A	ØB	A/F
1054EL-12	1	G1/4 Female (BSPP)	168	58	37	17,5
1095EL-12	1	G3/8 Female (BSPP)	160	58	38	24,0
1461EL-12	1	G1/2 Female (BSPP)	180	58	37	25,5
1462EL-12	1	G3/4 Female (BSPP)	220	63	37	33,0

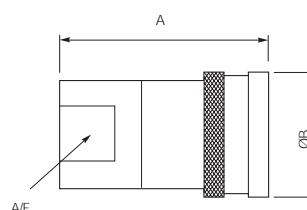
Sleeve Action Heavy Duty Check Units



Profile



Symbol



Order Code	Pack Qty	Connection	Weight (g)	Dimensions		
				A	ØB	A/F
7222	1	G1/4 Female (BSPP)	174	59,5	32	18,0
7223	1	G3/8 Female (BSPP)	196	59,5	32	24,0
7224	1	G1/2 Female (BSPP)	182	59,5	32	25,5
7226	1	G3/4 Female (BSPP)	222	64,5	32	33,0

Quick Acting Couplers

Schrader Original

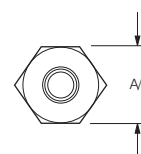
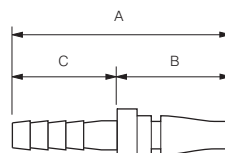
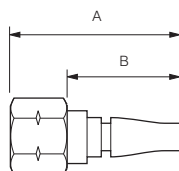
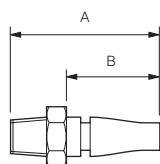
Heavy Duty Adaptors



Profile



Symbol



Order Code	Pack Qty	Connection		Weight (g)	Dimensions			
					A	B	C	Hex A/F
8624B-11	5	R1/4 Male	(BSPT)	44	48,0	28	-	17,5
9739-11	5	R3/8 Male	(BSPT)	60	48,0	28	-	22,0
8807-11	5	R1/2 Male	(BSPT)	86	54,0	28	-	22,0
1462B-11	5	G3/4 Male	(BSPP)	102	55,0	28	-	27,0
1261L-11	5	G1/4 Female	(BSPP)	44	43,0	28	-	17,5
1096B-11	5	G3/8 Female	(BSPP)	64	47,0	28	-	22,0
1097-11	5	3/8" (10mm)	Hose Tail	46	71,0	33	38	-
1098-11	5	1/2" (12mm)	Hose Tail	64	71,0	33	38	-
9042	1	G3/8 Female Non-whip	(BSPP)	90	57,5	28	-	22,0





Profile Overview

Industrial Interchange Profiles

Developed to suit the 'Industry Interchangeable Profile' the following programme of Check Units and Adaptors includes

- **Schrader InterCheck 35 Series**
- **Schrader InterCheck 55 Series**
- **Schrader Mini Series**
- **Schrader 'Euro' Series.**

Below are listed the most popular alternative Quick Acting Couplers and their equivalent in the Schrader range.

Series	Profile	Interchangeable with	Page No.
Schrader InterCheck 35		CEJN 320 Rectus 254 Euro Standard	9 / 10 / 11
Schrader InterCheck 55		CEJN 410 Rectus 27	12 / 13
Schrader Mini			14 / 15
Schrader Euro		ARO 210, ORION CEJN 300	16 / 17

Quick Acting Couplers

Schrader InterCheck

- ˘ High flow with minimum pressure drop
- ˘ One hand connect / disconnect
- ˘ Robust construction
- ˘ Positive locking action
- ˘ Popular European standard
- ˘ Excellent corrosion resistance

Schrader InterCheck Quick Acting check units, fitted to the airline at convenient points, provide compressed air immediately at the point of use. On disconnection, the check unit automatically reseals the airline. When coupled the adaptors are able to swivel, helping to eliminate kinking of the hose.



Materials

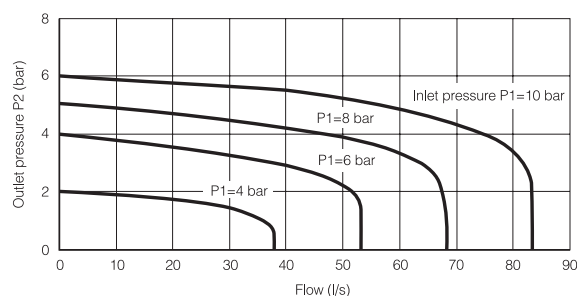
Body	Steel, zinc plated and clear passivated
Sleeve	Hardened steel, zinc plated and clear passivated
Springs	Stainless steel
Balls	Stainless steel
Seals	Nitrile
Adaptors	Hardened steel, zinc plated and clear passivated

Operating Information

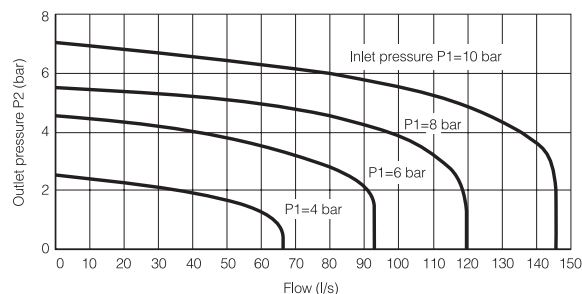
	Intercheck 35	Intercheck 55
Pressure range	0 - 35 bar	0 - 35 bar
Temperature range	-10°C to +80°C	-10°C to +80°C
Fluids	Air	Air
Flow rate	Q max 52 l/sec Cv = 3.0	Q max 92 l/sec Cv = 4.55

Flow Rates

Intercheck 35



Intercheck 55



Quick Acting Couplers

Schrader InterCheck

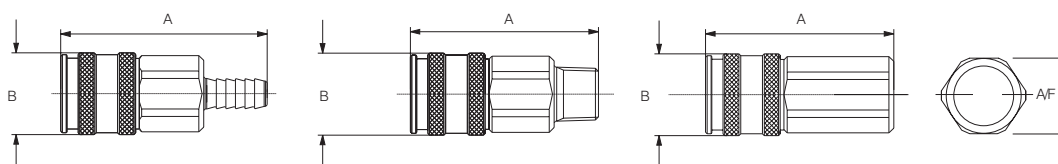
InterCheck 35 Check Units

Interchangeable with CEJN 320 and Rectus 25 series

Profile



Symbol



Order Code	Pack Qty	Connection	Weight (g)	Dimensions (mm)		
				A	ØB	Hex A/F
P6C-JSH6	1	Ø6mm Hose Tail	116	70,0	26	22
P6C-JSH8	1	Ø8mm Hose Tail	120	70,0	26	22
P6C-JSHA	1	Ø10mm Hose Tail	118	70,0	26	22
P6C-JSHC	1	Ø13mm Hose Tail	122	70,0	26	22
P6C-JSB2	1	R ¹ / ₄ male (BSPT)	116	60,0	26	22
P6C-JSB3	1	R ³ / ₈ male (BSPT)	116	59,0	26	22
P6C-JSB4	1	R ¹ / ₂ male (BSPT)	112	57,5	26	22
P6C-JS12	1	G ¹ / ₄ female (BSPP)	124	56,0	26	22
P6C-JS13	1	G ³ / ₈ female (BSPP)	122	58,0	26	22
P6C-JS14	1	G ¹ / ₂ female (BSPP)	130	60,0	26	24

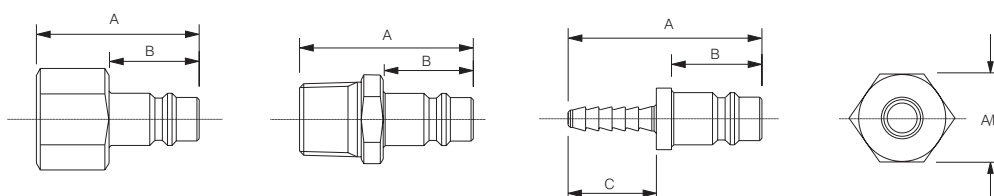
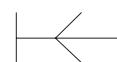
Quick Acting Couplers

Schrader InterCheck

InterCheck 35 Adaptors

Profile

Symbol



Order Code	Description		Weight (g)	Dimensions (mm)			
				A	B	C	A/F
P6A-JSH4-005*	4mm	Hose Tail	14	45,5	20.5	21	-
P6A-JSH6-005*	6mm	Hose Tail	16	45,5	20.5	21	-
P6A-JSH8-005*	8mm	Hose Tail	17	45,5	20.5	21	-
P6A-JSHA-005*	10mm	Hose Tail	18	45,5	20.5	21	-
P6A-JSHC-005*	13mm	Hose Tail	25	45,5	20.5	21	-
P6A-JSB1-005*	R ¹ / ₈ male	(BSPT)	14	33,5	20.5	-	14
P6A-JSB2-005*	R ¹ / ₄ male	(BSPT)	18	37,5	20.5	-	14
P6A-JSB3-005*	R ³ / ₈ male	(BSPT)	26	38,0	20.5	-	18
P6A-JSB4-005*	R ¹ / ₂ male	(BSPT)	42	44,0	20.5	-	22
P6A-JS11-005*	G ¹ / ₈ female	(BSPP)	16	32,0	20.5	-	14
P6A-JS12-005*	G ¹ / ₄ female	(BSPP)	32	37,0	20.5	-	18
P6A-JS13-005*	G ³ / ₈ female	(BSPP)	32	37,5	20.5	-	21
P6A-JS14-005*	G ¹ / ₂ female	(BSPP)	49	44,0	20.5	-	24

*Note: Denotes order code for a pack of 5

Quick Acting Couplers

Schrader InterCheck

InterCheck 55 Check Units

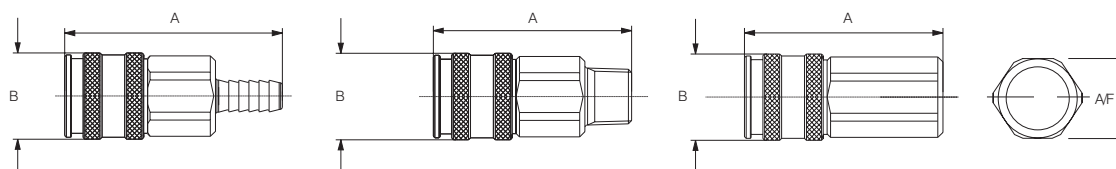
Interchangeable with CEJN 410 and Rectus 27 series



Profile



Symbol



Order Code	Pack Qty	Connection		Weight (g)	Dimensions (mm)		
					A	ØB	Hex A/F
P6C-KSH8	1	Ø8mm	Hose Tail	130	72,5	28,5	24
P6C-KSHA	1	Ø10mm	Hose Tail	132	72,5	28,5	24
P6C-KSHC	1	Ø13mm	Hose Tail	134	72,5	28,5	24
P6C-KSHE	1	Ø16mm	Hose Tail	134	72,5	28,5	24
P6C-KSHG	1	Ø19mm	Hose Tail	138	72,5	28,5	24
P6C-KSB2	1	R ¹ / ₄ male	(BSPT)	126	61,5	28,5	24
P6C-KSB3	1	R ³ / ₈ male	(BSPT)	126	62,0	28,5	24
P6C-KSB4	1	R ¹ / ₂ male	(BSPT)	134	66,0	28,5	24
P6C-KSB6	1	R ³ / ₄ male	(BSPT)	160	65,0	28,5	27
P6C-KS12	1	G ¹ / ₄ female	(BSPP)	148	60,0	28,5	24
P6C-KS13	1	G ³ / ₈ female	(BSPP)	142	60,0	28,5	24
P6C-KS14	1	G ¹ / ₂ female	(BSPP)	136	65,0	28,5	24
P6C-KS16	1	G ³ / ₄ female	(BSPP)	178	65,0	28,5	30

Quick Acting Couplers

Schrader InterCheck

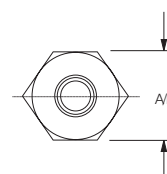
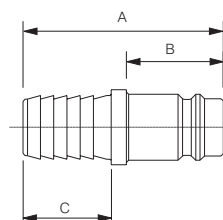
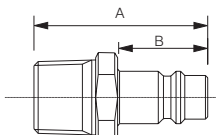
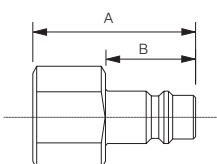
InterCheck 55 Adaptors



Profile



Symbol



Order Code	Pack Qty	Connection		Weight (g)	Dimensions (mm)			
					A	B	C	A/F
P6A-KSH6	1	6mm	Hose Tail	20	46,5	22	21	-
P6A-KSH8	1	8mm	Hose Tail	22	47,0	22	21	-
P6A-KSHA	1	10mm	Hose Tail	24	47,0	22	21	-
P6A-KSHC	1	13mm	Hose Tail	30	47,0	22	21	-
P6A-KSHE	1	16mm	Hose Tail	40	47,0	22	21	-
P6A-KSHG	1	19mm	Hose Tail	44	45,5	22	20	-
P6A-KSB2	1	R ¹ / ₄ male (BSPT)		32	38,0	22	-	18
P6A-KSB3	1	R ³ / ₈ male (BSPT)		34	39,0	22	-	18
P6A-KSB4	1	R ¹ / ₂ male (BSPT)		60	44,5	22	-	22
P6A-KSB6	1	R ³ / ₄ male (BSPT)		90	48,0	22	-	28
P6A-KS12	1	G ¹ / ₄ female (BSPP)		36	39,0	22	-	18
P6A-KS13	1	G ³ / ₈ female (BSPP)		34	39,0	22	-	20
P6A-KS14	1	G ¹ / ₂ female (BSPP)		60	46,0	22	-	24
P6A-KS16	1	G ³ / ₄ female (BSPP)		100	50,0	22	-	30

Quick Acting Couplers

Schrader Mini

- ~ Ideal when space is at a premium
- ~ Male or female threads
- ~ Two hand operation

The sleeve action design requires two hand operation for added security, before the adaptor is connected. On disconnection the check unit automatically reseals the airline. When coupled the check unit allows the adaptors to swivel to eliminate kinking of the hose.



Materials

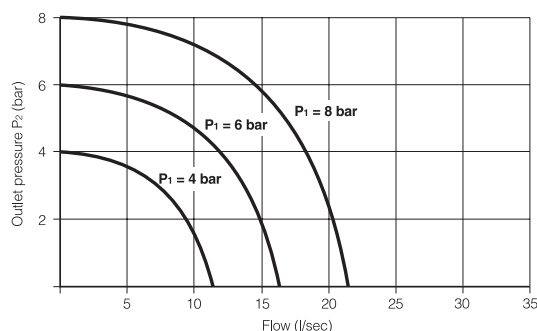
Body	Brass nickel plated
Spring	Stainless steel
Balls	Stainless steel
Seals	Nitrile
Adaptors	Brass nickel plated

Operating Information

Pressure range	0-16 bar
Temperature range	-10° to +80°C
Fluids	Air
Flow rate	Q max = 17.9 l/sec Cv = 0.57

Typical Flow Rates

Pressure vs Flow
Schrader Mini 1/4 Male Coupling



Quick Acting Couplers

Schrader Mini

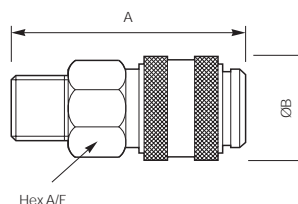
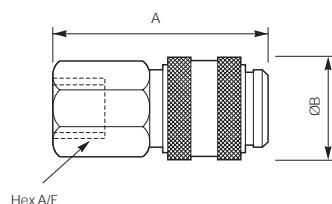
Mini Check Units



Profile



Symbol



Order Code	Pack Qty	Connection	Weight (g)	Dimensions		
				A	ØB	Hex A/F
7073	1	G1/8 Female (BSPP)	28	36,5	16,5	14
7071	1	G1/8 Male (BSPP)	28	36,5	16,5	14

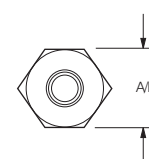
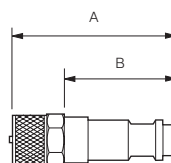
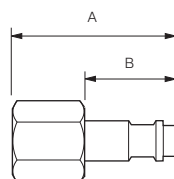
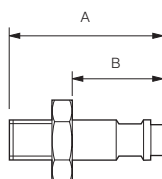
Mini Adaptors



Profile



Symbol



Order Code	Pack Qty	Connection	Weight (g)	Dimensions		
				A	B	Hex A/F
7370	5	G1/8 Female (BSPP)	16	27	14	14
7170	5	G1/8 Male (BSPP)	12	25	14	14
7470	5	4mm	18	32	19	-

Quick Acting Couplers

Schrader Euro

- ~ Ideal when space is at a premium
- ~ Male or female threads
- ~ Two hand operation

The sleeve action design requires two hand operation for added security, before the adaptor is connected. On disconnection the check unit automatically reseals the airline. When coupled the check unit allows the adaptors to swivel to eliminate kinking of the hose.



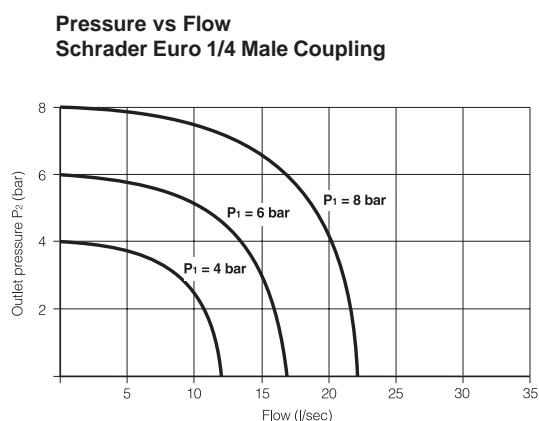
Materials

Body	Brass nickel plated
Spring	Stainless steel
Balls	Stainless steel
Seals	Nitrile
Adaptors	Brass nickel plated

Operating Information

Pressure range	0-16 bar
Temperature range	-10° to +80°C
Fluids	Air
Flow rate	Q max = 17.9 l/sec Cv = 0.57

Typical Flow Rates



Quick Acting Couplers

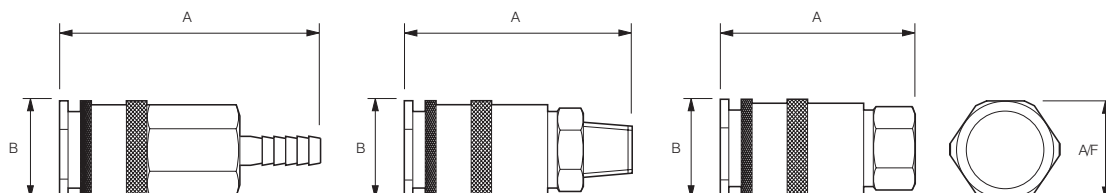
Schrader *Euro*

Schrader *Euro* Check Units

Profile



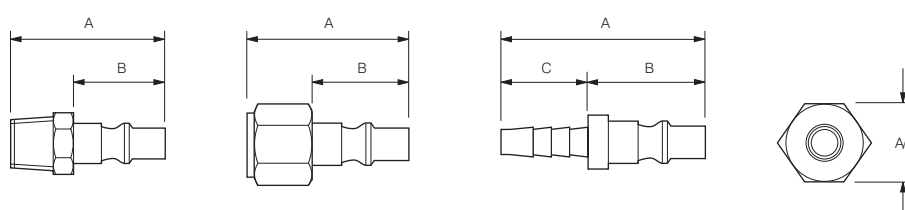
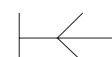
Symbol



Order Code	Pack Qty	Connection	Weight (g)	Dimensions		
				A	ØB	Hex A/F
P6C-ESB2	1	R1/4" Male (BSPT)	108	58,0	25	20
P6C-ESB3	1	R3/8" Male (BSPT)	113	58,0	25	20
P6C-ESB4	1	R1/2" Male (BSPT)	134	62,0	25	22
P6C-ES12	1	G1/4" Female (BSPP)	104	49,0	25	20
P6C-ES13	1	G3/8" Female (BSPP)	102	50,0	25	20
P6C-ES14	1	G1/2" Female (BSPP)	116	62,5	25	24
P6C-ESH6	1	1/4" Hose Tail	114	73,0	25	20
P6C-ESH8	1	5/16" Hose Tail	112	73,0	25	20
P6C-ESHA	1	3/8" Hose Tail	115	73,0	25	20

Schrader *Euro* Adaptors

Symbol



Order Code	Pack Qty	Connection	Weight (g)	Dimensions			
				A	B	C	Hex A/F
P6A-ES12	5	G1/4" Female (BSPP)	18	40	23	-	18,0
P6A-ESB2	5	R1/4" Male (BSPT)	28	39	23	-	13,5
P6A-ESH6	5	1/4" Hose Tail	14	47	28	19	No Hex
P6A-ESH8	5	5/16" Hose Tail	15	47	28	19	No Hex
P6A-ESHA	5	3/8" Hose Tail	16	47	23	19	13,0