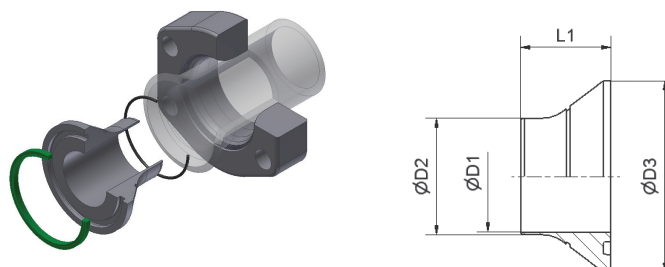


## HPF – SAE 3000/ISO 6162-1

### IPV – Insert with F37 profile seal

ISO 6162-1 footprint



Size Inch	Tube	Complete part (flange incl. insert and seals)	Insert (incl. seals)	D1	D2	D3	L1	Weight (Steel) kg/1 piece	F37 seal	O-Ring
1 1/4	42x4.0	HPF320-42X4.0-VCF	IP320-42X4.0-VCF	30.5	33.4	50.8	34	0.11	F37S20X	OR37.82X1.78X
1 1/2	50x5.0	HPF324-50X5.0-VCF	IP324-50X5.0-VCF	36.5	39.4	60.4	39	0.19	F37S24X	OR50.52X1.78X
2	50x5.0	HPF332-50X5.0-VCF	IP332-50X5.0-VCF	36.5	39.4	71.4	46	0.36	F37S32X	OR50.52X1.78X
2	60x5.0	HPF332-60X5.0-VCF	IP332-60X5.0-VCF	46.5	49.4	71.4	38	0.25	F37S32X	OR56.87X1.78X
2	60x6.0	HPF332-60X6.0-VCF	IP332-60X6.0-VCF	44.3	47.3	71.4	38	0.25	F37S32X	OR56.87X1.78X
2 1/2	60x6.0	HPF340-60X6.0-VCF	IP340-60X6.0-VCF	44.3	47.3	84.1	47	0.49	F37S40X	OR56.87X1.78X
2 1/2	73x7.0	HPF340-73X7.0-VCF	IP340-73X7.0-VCF	55.2	58.2	84.1	40	0.35	F37S40X	OR66.40X1.78X
3	90x5.0	HPF348-90X5.0-VCF	IP348-90X5.0-VCF	76.5	79.4	101.6	38	0.39	F37S48X	OR88.62X1.78X
3	90x9.0	HPF348-90X9.0-VCF	IP348-90X9.0-VCF	68.5	71.4	101.6	43	0.54	F37S48X	OR82.27X1.78X

Material	Suffix surface and material	Example
Steel, zinc plated, Cr(VI)-free	CF	IP324-50X5.0-VCF

ENGINEERING YOUR SUCCESS.