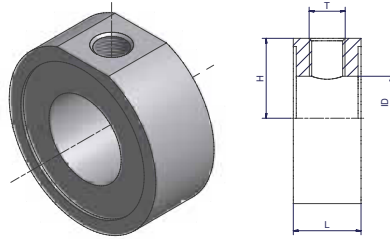


Parflange® F37 – SAE 3000/ISO 6162-1

TBT – TEE between bonded seal

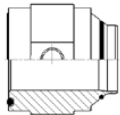
SAE 3000/ISO 6162-1



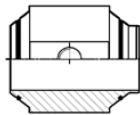
Size Inch	Order code*	L	H	T	ID	Bolt ISO 4762	Weight body (Steel) kg/1 piece
1	TBT16-1/4CFX	25	20.5	G 1/4 A	25	ZYLS10X90	0.21
1 1/4	TBT20-1/4CFX	25	24.5	G 1/4 A	27	ZYLS10X100	0.30
1 1/4	TBT20-1/2CFX	40	22.5	G 1/2 A	24	ZYLS10X120	0.49
1 1/2	TBT24-1/4CFX	25	29.5	G 1/4 A	31	ZYLS12X110	0.42
1 1/2	TBT24-1/2CFX	40	28.0	G 1/2 A	30	ZYLS12X130	0.68
2	TBT32-1/4CFX	25	35.0	G 1/4 A	41	ZYLS12X110	0.51
2	TBT32-1/2CFX	40	34.0	G 1/2 A	38	ZYLS12X130	0.87
2 1/2	TBT40-1/4CFX	30	41.5	G 1/4 A	60	ZYLS12X150	0.63
3	TBT48-1/4CFX	30	50.0	G 1/4 A	72	ZYLS12X150	0.90

*For testpoints and diagnostic test equipment see catalogue 4100, Industrial Tube Fittings Europe

Alternative versions on request



TFVB



TTB

Please change suffixes according to material/surface required

Order code suffixes		
Material	Suffix surface and material	Example
Steel, zinc plated, Cr(VI)-free	CF	TBT24-1/4CFX
Stainless steel	SS	TBT24-1/4SSX

