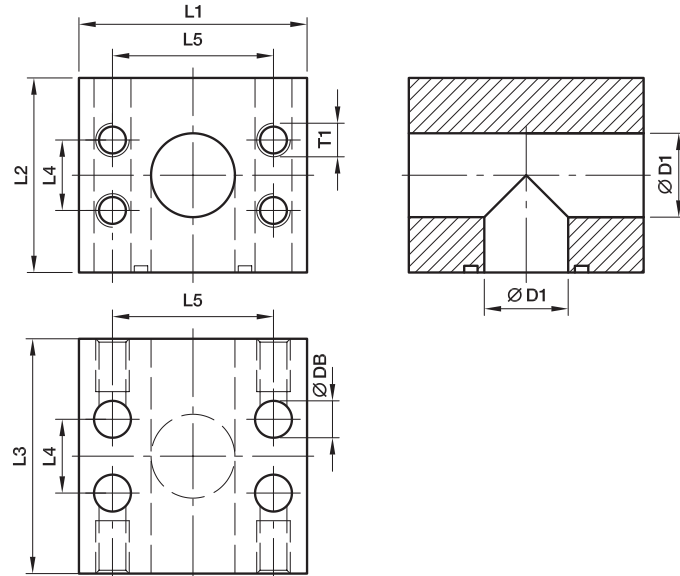




SAE Junction blocks

PBTC SAE Counter flange T-block

ISO 6162-1/-2



6000 PSI Series

Nom. flange size		D1	L1	L2	L3	L4	L5	L6	T1	Weight (steel) kg/piece	Order code*	PN (bar) ¹⁾	
SAE (in)	ISO (DN)											S	SS
3/4	19	19	70	55	70	23.8	50.8	23.8	M10	1.70	PBTC602-602	420	420
1	25	25	80	69	80	27.8	57.2	27.8	M12	2.90	PBTC603-603	420	420
1 1/4	32	30	94	75	94	31.8	66.6	31.6	M14	3.80	PBTC604-604	420	420
1 1/2	38	38	106	100	106	36.5	79.3	36.7	M16	8.90	PBTC605-605	420	420
2	51	50	135	116	140	44.5	96.8	44.4	M20	12.70	PBTC606-606	420	420

¹⁾ Pressure shown = Item deliverable

$\frac{PN \text{ (bar)}}{10} = PN \text{ (MPa)}$



*Please add the suffixes below according to the material / surface required.

Order code suffixes			
Material	Suffix surface and material	Example	Description
Steel, blanc oil dipped	S	PBTC602-602S	only flange block
Stainless steel	SS	PBTC602-602SS	only flange block



M77

Catalogue 4100-5/UK