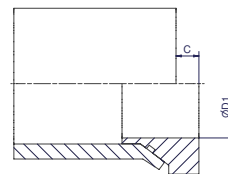
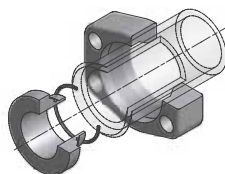


Parflange® F37 – SAE 3000/ISO 6162-1

TF – Flare flange connection

Tube to flange connection, flat face



Size		Flange incl. Insert + O-Ring (+ Sleeve) Order code	D1	C	Insert incl. O-Ring Order code	O-Ring Order code	Sleeve	Weight (Steel) kg/1 piece
Inch	Tube							
1/2	16X2.0	F37-308-16X2.0TFCF	9.5	8.0	IN08-16X2.0TFCF	OR12X1.0X	SL08-25-16-CFX	0.24
1/2	18X2.0	F37-308-18X2.0TFCF	11.5	8.0	IN08-18X2.0TFCF	OR14X1.1X	SL08-25-18-CFX	0.24
1/2	20X2.0	F37-308-20X2.0TFCF	13.5	8.0	IN08-20X2.0TFCF	OR16X1.0X	SL08-25-20-CFX	0.25
1/2	20X2.5	F37-308-20X2.5TFCF	13.5	8.0	IN08-20X2.5TFCF	OR16X1.0X	SL08-25-20-CFX	0.25
1/2	25X2.5	F37-308-25X2.5TFCF	13.5	10.0	IN08-25X2.5TFCF	OR20X1.0X		0.25
1/2	25X3.0	F37-308-25X3.0TFCF	13.0	8.0	IN08-25X3.0TFCF	OR20X1.0X		0.24
3/4	20X2.0	F37-312-20X2.0TFCF	13.5	8.0	IN12-20X2.0TFCF	OR16X1.0X	SL12-30-20-CFX	0.31
3/4	20X2.5	F37-312-20X2.5TFCF	12.5	8.0	IN12-20X2.5TFCF	OR16X1.0X	SL12-30-20-CFX	0.31
3/4	25X2.5	F37-312-25X2.5TFCF	17.5	10.0	IN12-25X2.5TFCF	OR20X1.0X	SL12-30-25-CFX	0.31
3/4	25X3.0	F37-312-25X3.0TFCF	16.5	8.0	IN12-25X3.0TFCF	OR20X1.0X	SL12-30-25-CFX	0.32
3/4	30X3.0	F37-312-30X3.0TFCF	19.0	8.5	IN12-30X3.0TFCF	OR25X1.0X		0.32
3/4	30X4.0	F37-312-30X4.0TFCF	19.0	8.5	IN12-30X4.0TFCF	OR24X1.0X		0.32
1	25X2.5	F37-316-25X2.5TFCF	17.5	10.0	IN16-25X2.5TFCF	OR20X1.0X	SL16-38-25-CFX	0.38
1	25X3.0	F37-316-25X3.0TFCF	16.5	8.0	IN16-25X3.0TFCF	OR20X1.0X	SL16-38-25-CFX	0.39
1	30X3.0	F37-316-30X3.0TFCF	21.5	8.5	IN16-30X3.0TFCF	OR25X1.0X	SL16-38-30-CFX	0.41
1	30X4.0	F37-316-30X4.0TFCF	19.5	8.5	IN16-30X4.0TFCF	OR22X1.0X	SL16-38-30-CFX	0.39
1	38X2.5	F37-316-38X2.5TFCF	25.0	9.5	IN16-38X2.5TFCF	OR34X1.0X		0.41
1	38X3.0	F37-316-38X3.0TFCF	25.0	9.0	IN16-38X3.0TFCF	OR34X1.0X		0.40
1	38X4.0	F37-316-38X4.0TFCF	25.0	10.0	IN16-38X4.0TFCF	OR30X1.0X		0.40
1	38X5.0	F37-316-38X5.0TFCF	25.0	8.0	IN16-38X5.0TFCF	OR28X1.0X		0.39
1 1/4	30X3.0	F37-320-30X3.0TFCF	21.5	8.5	IN20-30X3.0TFCF	OR25X1.0X	SL20-42-30-CFX	0.57
1 1/4	30X4.0	F37-320-30X4.0TFCF	19.5	8.5	IN20-30X4.0TFCF	OR22X1.0X	SL20-42-30-CFX	0.59
1 1/4	38X3.0	F37-320-38X3.0TFCF	29.0	9.0	IN20-38X3.0TFCF	OR34X1.0X	SL20-42-38-CFX	0.56
1 1/4	38X4.0	F37-320-38X4.0TFCF	27.0	10.0	IN20-38X4.0TFCF	OR30X1.0X	SL20-42-38-CFX	0.57
1 1/4	38X5.0	F37-320-38X5.0TFCF	25.5	8.0	IN20-38X5.0TFCF	OR28X1.0X	SL20-42-38-CFX	0.56
1 1/4	42X3.0	F37-320-42X3.0TFCF	31.5	10.0	IN20-42X3.0TFCF	OR37.82X1.78X		0.57
1 1/4	42X4.0	F37-320-42X4.0TFCF	31.5	10.0	IN20-42X4.0TFCF	OR34X1.0X		0.56
1 1/2	38X3.0	F37-324-38X3.0TFCF	27.5	9.0	IN24-38X3.0TFCF	OR34X1.0X	SL24-50-38-CFX	0.87
1 1/2	38X4.0	F37-324-38X4.0TFCF	27.5	10.0	IN24-38X4.0TFCF	OR30.X1.0X	SL24-50-38-CFX	0.87
1 1/2	38X5.0	F37-324-38X5.0TFCF	25.0	8.0	IN24-38X5.0TFCF	OR41X1.78X	SL24-50-38-CFX	0.87
1 1/2	42X3.0	F37-324-42X3.0TFCF	33.5	10.0	IN24-42X3.0TFCF	OR37.82X1.78X	SL24-50-42-CFX	0.87
1 1/2	42X4.0	F37-324-42X4.0TFCF	31.5	10.0	IN24-42X4.0TFCF	OR34X1.0X	SL24-50-42-CFX	0.87
1 1/2	50X3.0	F37-324-50X3.0TFCF	36.0	11.0	IN24-50X3.0TFCF	OR44.17X1.78X		0.87
1 1/2	50X5.0	F37-324-50X5.0TFCF	36.0	10.0	IN24-50X5.0TFCF	OR41X1.78X		0.87
1 1/2	50X6.0	F37-324-50X6.0TFCF	35.0	10.0	IN24-50X6.0TFCF	OR41X1.78X		0.87
2	50X3.0	F37-332-50X3.0TFCF	41.5	11.0	IN32-50X3.0TFCF	OR44.17X1.78X	SL32-60-50-CFX	1.20
2	50X5.0	F37-332-50X5.0TFCF	37.5	10.0	IN32-50X5.0TFCF	OR41X1.78X	SL32-60-50-CFX	1.22
2	50X6.0	F37-332-50X6.0TFCF	35.0	10.0	IN32-50X6.0TFCF	OR41X1.78X	SL32-60-50-CFX	1.25
2	60X3.0	F37-332-60X3.0TFCF	46.0	12.0	IN32-60X3.0TFCF	OR53.7X1.78X		1.25
2	60X5.0	F37-332-60X5.0TFCF	46.0	11.0	IN32-60X5.0TFCF	OR50.52X1.78X		1.22
2	60X6.0	F37-332-60X6.0TFCF	45.5	11.0	IN32-60X6.0TFCF	OR47.37X1.78X		1.21
2 1/2	60X3.0	F37-340-60X3.0TFCF	50.0	12.0	IN40-60X3.0TFCF	OR53.7X1.78X	SL40-75-60-CFX	1.98
2 1/2	60X5.0	F37-340-60X5.0TFCF	46.0	11.0	IN40-60X5.0TFCF	OR50.52X1.78X	SL40-75-60-CFX	1.99
2 1/2	60X6.0	F37-340-60X6.0TFCF	45.5	11.0	IN40-60X6.0TFCF	OR47.37X1.78X	SL40-75-60-CFX	1.97
2 1/2	75X3.0	F37-340-75X3.0TFCF	60.0	10.0	IN40-75X3.0TFCF	OR69.57X1.78X		1.93
2 1/2	75X5.0	F37-340-75X5.0TFCF	60.0	10.0	IN40-75X5.0TFCF	OR63.22X1.78X		1.95
3	75X3.0	F37-348-75X3.0TFCF	66.0	10.0	IN48-75X3.0TFCF	OR69.57X1.78X	SL48-90-75-CFX	3.22
3	75X5.0	F37-348-75X5.0TFCF	62.0	10.0	IN48-75X5.0TFCF	OR63.22X1.78X	SL48-90-75-CFX	3.38
3	90X3.5	F37-348-90X3.5TFCF	72.0	15.0	IN48-90X3.5TFCF	OR82.27X1.78X		3.39
3	90X5.0	F37-348-90X5.0TFCF	72.0	14.0	IN48-90X5.0TFCF	OR79X1.78X		3.35

Other sizes on request

Please change suffixes according to material/surface required

Order code suffixes		
Material	Suffix surface and material	Example
Steel, zinc plated, Cr(VI)-free	CF	F37-324-50X5.0TFCF
Stainless steel	SS	F37-324-50X5.0TFSS

ENGINEERING YOUR SUCCESS.