

# Ball Valves

## 2-Way Series

*Pressures to 20,000 psi (1379 bar)*

Parker Autoclave Engineers high-pressure ball valves have been designed to provide superior quality for maximum performance within a variety of valve styles, sizes, and process connections. Some of the more unique design innovations include an integral one-piece trunnion mounted style ball and stem that eliminates the shear failure common in two piece designs, re-torqueable seat glands that result in longer seat life, and a low friction stem seal that reduces actuation torque and enhances cycle life.

These ball valves can also be modified to incorporate the use of special materials, seals for high temperature applications, subsea models, and valve actuators.

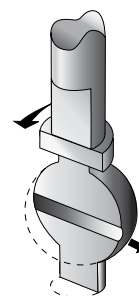
When it comes to high-pressure applications, these ball valves with the associated high-pressure components, provide the critical performance demanded by the high pressure market.

### Ball Valve Features:

- One-piece, trunnion mounted style, stem design eliminates shear failure and reduces the effects of side loading found in two piece designs.
- Re-torqueable seat glands for longer seat life.
- PEEK seats offer excellent resistance to chemicals, heat, and wear/abrasion.
- Full-port flow path minimizes pressure drop.
- 316 cold worked stainless steel construction.
- Low friction pressure assisted graphite filled PTFE stem seal increases cycle life and reduces operating torque.
- Quarter turn from open to close with positive stop.
- Viton o-rings for operation from 0°F (-17.8°C) to 400°F (204°C).
- Optional o-rings available for high-temperature applications.
- Optional wetted materials.
- Wide selection of tube and pipe end fittings available.
- Electric and pneumatic actuator options.



Flow Configuration



Two-Way  
Shut-Off

### Applications:

- Laboratories
- Test Stands
- Control Panels
- Chemical Research
- Pilot Plants
- Water Blast Pumping Units
- High volume chemical injection skids.



Autoclave  
Engineers 

[www.autoclave.com](http://www.autoclave.com)

**Ball Valves - 2-Way Series**

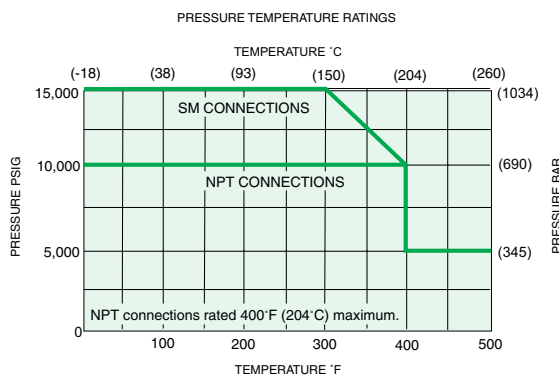
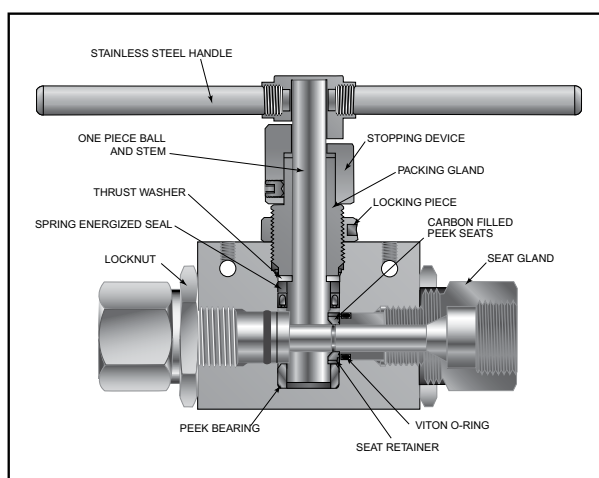
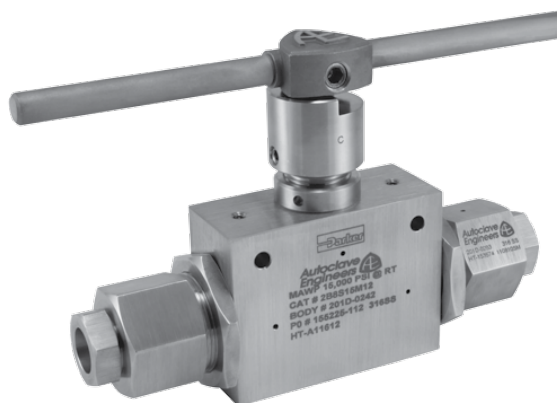
## Ball Valves - 2-Way Series (1/2" Orifice)

**Pressures to 15,000 psi (1034 bar) .500" (12.7mm) Orifice**

Connection	MAWP @ Room Temperature	Minimum Orifice Inches (mm)
SF750CX20	15,000 psi (1034 bar)	.500 (12.70)
SF1000CX20	15,000 psi (1034 bar)	.500 (12.70)
3/4" NPT	10,000 psi (690 bar)	.500 (12.70)
1" NPT	10,000 psi (690 bar)	.500 (12.70)

Valve C<sub>v</sub>=10.20

MAWP: Maximum Allowable Working Pressure



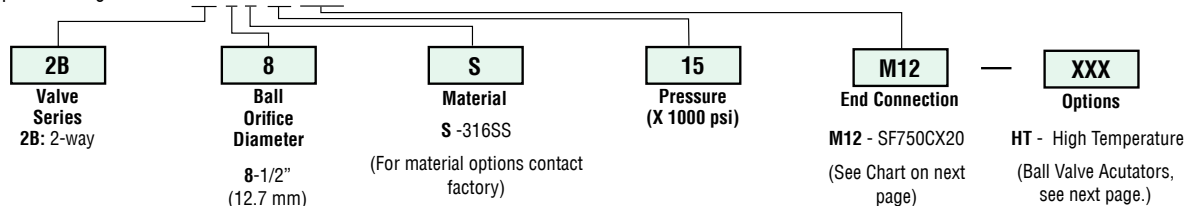
Pressure ratings are determined by the end connections chosen, see chart.

**NOTE: Ball valves are not recommended for critical gas applications such as Hydrogen, Helium or other small molecular gases.**

### Ordering Procedure

For complete information on available end connections and material options, see next page. 2-way ball valves are furnished complete with tube or pipe connections.

Typical catalog number: **2B 8 S 15 M12**



## End Connection Options

Catalog Number	End Connection Number	Connection	MAWP @ Room Temperature	Seat Gland Hex Inches(mm)
2B8S15M12	M12	SF750CX20	15,000 psi (1034 bar)	1.75 (44.5)
2B8S15M16	M16	SF1000CX20	15,000 psi (1034 bar)	1.75 (44.5)
2B8S10P12	P12	3/4" NPT	10,000 psi (690 bar)	1.75 (44.5)
2B8S10P16	P16	1" NPT	10,000 psi (690 bar)	1.75 (44.5)

MAWP: Maximum Allowable Working Pressure

See ball valve option/details section for end connection details, material, and high temperature options.

## Ball Valve Options

### Pneumatic Actuator

AO - Air-to-open/spring to close  
AC - Air-to-close/spring to open  
AOC - Air-to-open-and-close (double action)

### Electric Actuator

E01 - 120 volt AC 50/60 Hz  
E02 - 220 volt AC 50/60 Hz  
E03 - 24 VDC

### Actuator Operating Temperature:

Pneumatic: 0°F to 175°F (-17°C to 79°C)  
Electric: 0°F to 160°F (-17°C to 71°C)

### High Temperature Option:

HT - for media temperature up to 500°F (260°C)

See ball valve Actuator section for full description, additional information, and options.

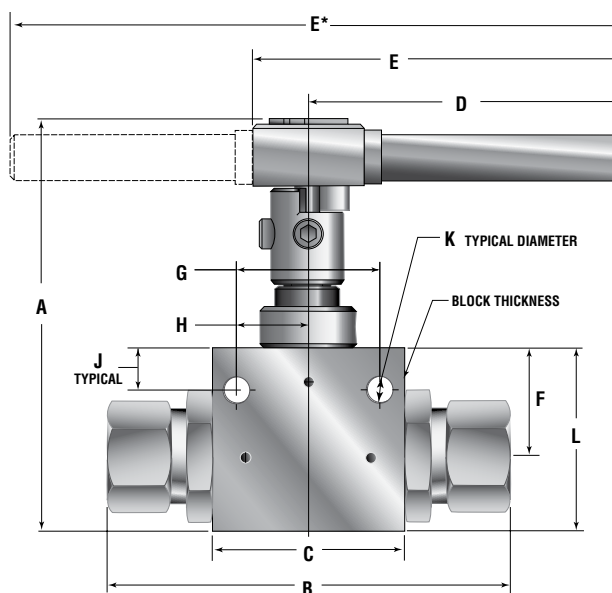
## Valve Maintenance

**Repair Kits:** add "R" to the front of valve catalog first 4 numbers for proper repair kit.  
(Example: **R2B8S**)

Consult your Parker Autoclave Engineers representative for pricing on repair kits. Refer to the Operation and Maintenance manual for proper maintenance procedures.

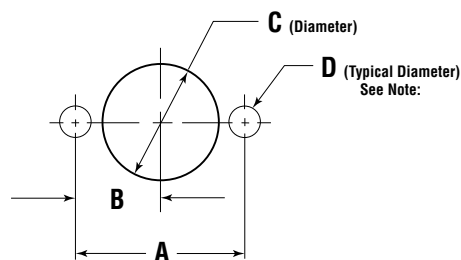
## Ball Valve Dimensions - inches (mm)

	VALVE MODELS		
	2B4S	2B6S	2B8S
<b>A</b>	4.33 (109.99)	4.97 (126.30)	5.97 (151.64)
<b>B</b>	4.19 (106.49)	5.53 (140.41)	7.73 (196.46)
<b>C</b>	2.00 (50.80)	3.00 (76.20)	4.13 (104.78)
<b>D</b>	3.37 (85.55)	4.99 (126.82)	5.12 (130.04)
<b>E</b>	3.90 (99.02)	5.52 (140.32)	★ 10.25 (260.35)
<b>F</b>	1.13 (28.58)	1.38 (34.92)	1.76 (44.70)
<b>G</b>	1.50 (38.10)	2.00 (50.80)	3.00 (76.20)
<b>H</b>	0.75 (19.05)	1.00 (25.40)	1.50 (38.10)
<b>J</b>	0.43 (10.92)	0.41 (10.31)	0.50 (12.70)
<b>K</b>	0.28 (7.11)	0.28 (7.11)	0.28 (7.11)
<b>L</b>	1.91 (48.41)	2.50 (63.50)	3.09 (78.58)
<b>Block Thickness</b>	1.00 (25.40)	1.38 (34.92)	1.75 (44.45)



## Ball Valve Panel Mounting Dimensions - inches (mm)

	VALVE MODELS		
	2B4S	2B6S	2B8S
<b>A</b>	1.500 (38.10)	2.000 (50.80)	3.000 (76.20)
<b>B</b>	0.750 (19.05)	1.000 (25.40)	1.500 (38.10)
<b>C</b>	1.06 (26.92)	1.50 (38.10)	1.88 (47.63)
<b>D</b>	0.28 (7.11)	0.28 (7.11)	0.28 (7.11)



All dimensions are for reference only  
and are subject to change without notice.

Note: Body mounting 1/4" - 20 thread