

Fuel High Pressure - 110A

FUEL

Specifications:

Height: 5.82" (14.78 cm)
Width: 3.20" (8.13 cm)
Depth: 3.30" (8.38 cm)
Weight (Dry): 2.47 lbs (1.12 kg)
Ports: 1/4-18 NPTF
Fuel Flow Rate: Diesel - 15 gph (57 lph)
 Gasoline - 35 gph (132 lph)
Max. Pressure: 100 PSI (689 kPa)
Service Clearance: 2.0" (5.1 cm)

Create a Part Number

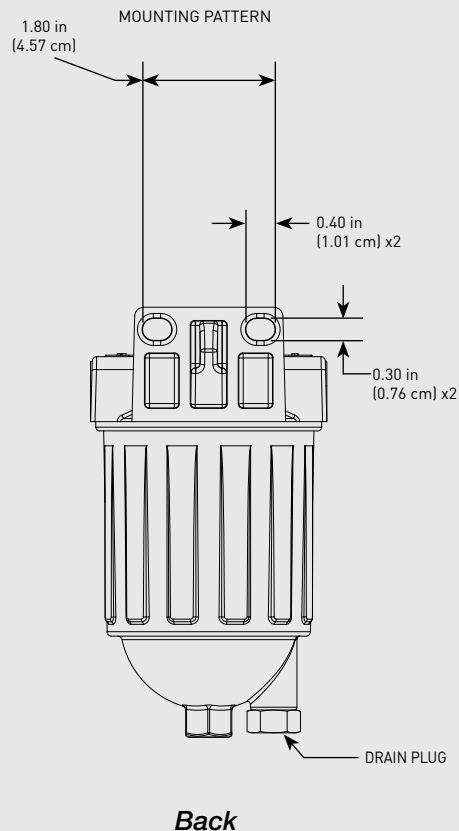
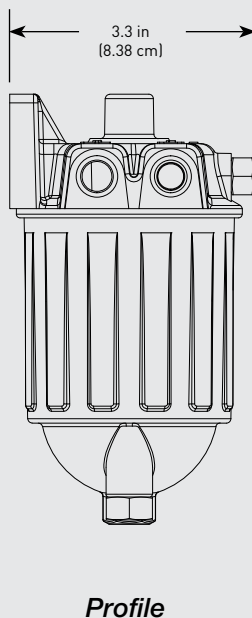
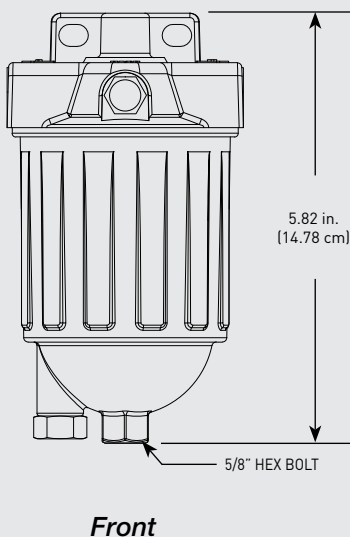
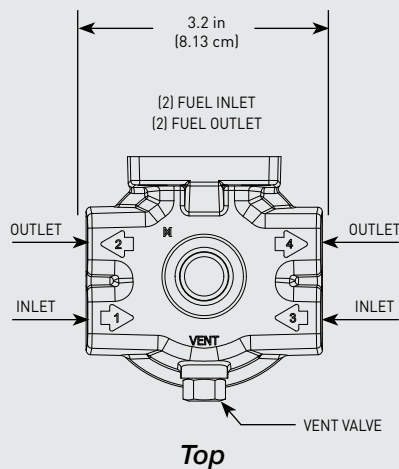
Mounting Head

4 Fuel Ports
 100 PSI Max Pressure
 Gasoline or Diesel
 110A



RACOR[®]

Dimensions:



ASSEMBLIES DESCRIPTION

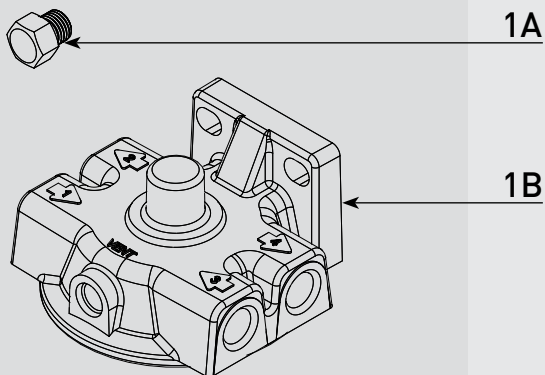
110A Marine Fuel, FF/WS, Metal Housing, 15 gph (Diesel); 35 gph (Gasoline) Flow Rate, 10 Micron Filtration



PARTS

Fuel High Pressure - 110A

1

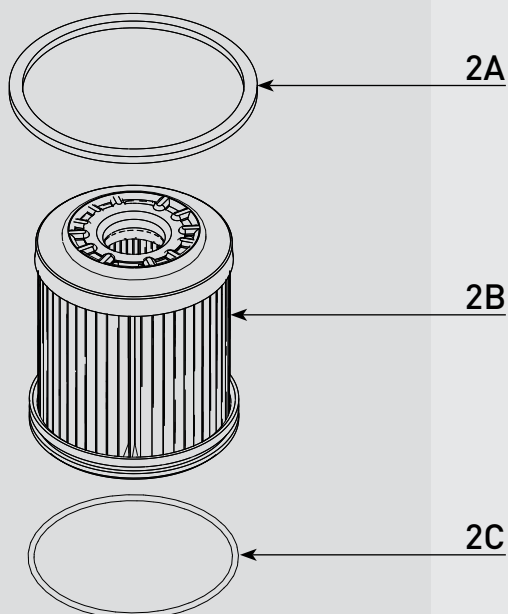


Part #	Description
1A	RK 10110 Vent Plug Kit - 3/8-24 SAE Plug
	110A Head Assembly

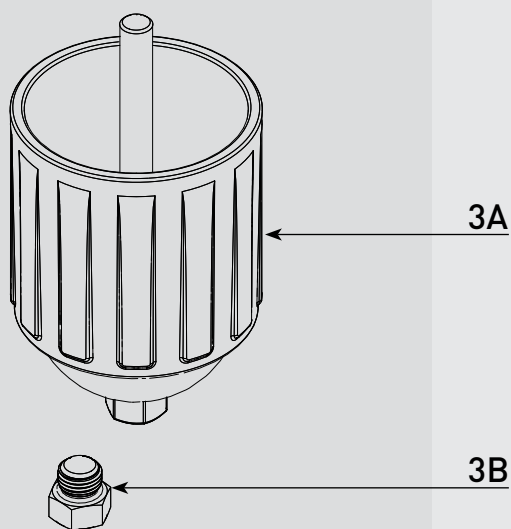
2A	Square Cut Gasket - <i>Included in 2B</i>
2B	R11T 110A Replacement Filter - 10 micron - <i>Includes 2A, 2C</i> R11S 110A Replacement Filter - 2 micron - <i>Includes 2A, 2C</i>
2C	Bowl O-ring - <i>Included in 2B & 3A</i>

3A	110A Bowl Assembly
3B	Drain Plug - 1/2-20 SAE Plug

2



3



Online Link
Marine High Pressure Fuel Filter Product Selector

