

Turbine Series - 75500FGX

FUEL

Specifications: Diesel Applications

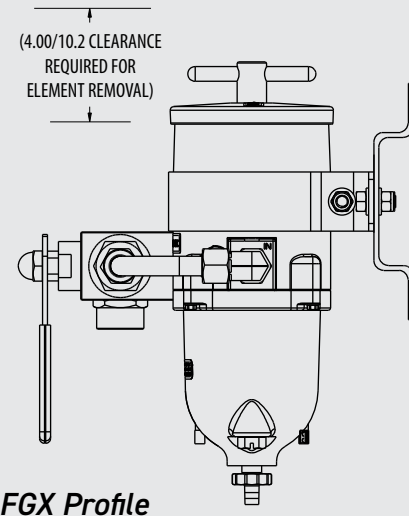
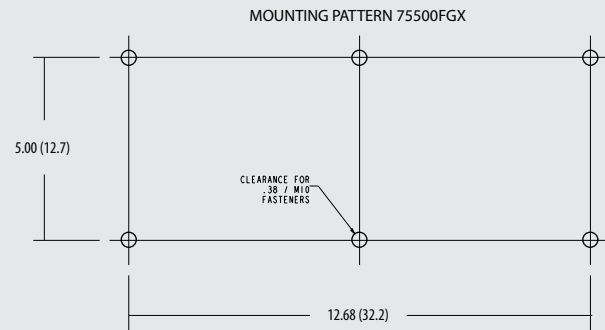
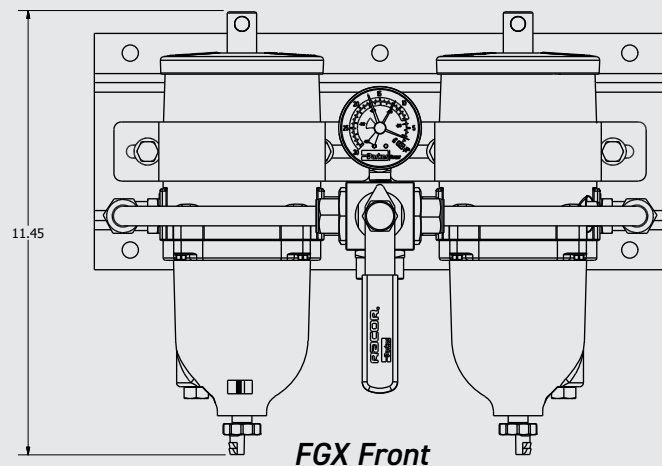
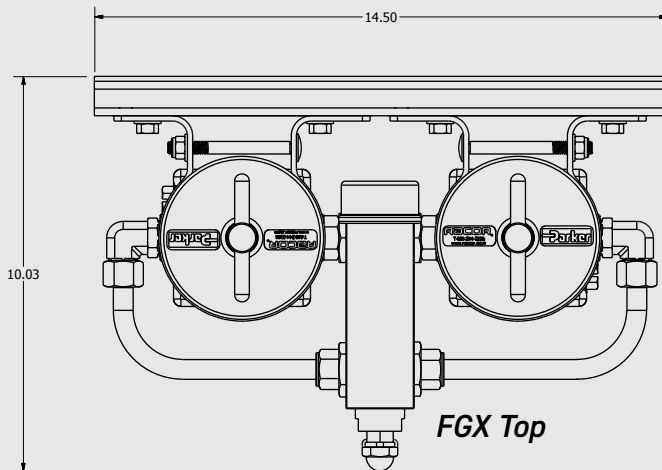
Height: 11.45" (29.08 cm)
Width: 14.5" (36.8 cm) with Bracket
Depth: 10.03" (25.5 cm) with Bracket
Dry Weight: 17.0 lbs (7.7 kg)
Valve Ports: 3/4"-16 UNF
 (SAE J1926 O-ring Boss)
Service Clearance (Top): 4.0" (10.16 cm)
Vacuum Installation Recommended
Maximum Head Pressure: 15 psi (1.03 bar)
Max Flow Rate: 120 gph (454 lph)

Create a Part Number

| Housing Type | Dual Assembly | 75 |
|-------------------|---------------------------------------|---------|
| Filtration Rating | Turbine Model 60/120 GPH Flow Rate | 500FG |
| Valve Type | 6-Port Ball Valve | X |
| Filtration Rating | 2 micron 10 micron 30 micron | 2 10 30 |

RACOR®

Dimensions:



| ASSEMBLY | DESCRIPTION |
|------------|--|
| 75500FGX2 | Dual 500 Turbine Assy., 2 micron Filter |
| 75500FGX10 | Dual 500 Turbine Assy., 10 micron Filter |
| 75500FGX30 | Dual 500 Turbine Assy., 30 micron Filter |

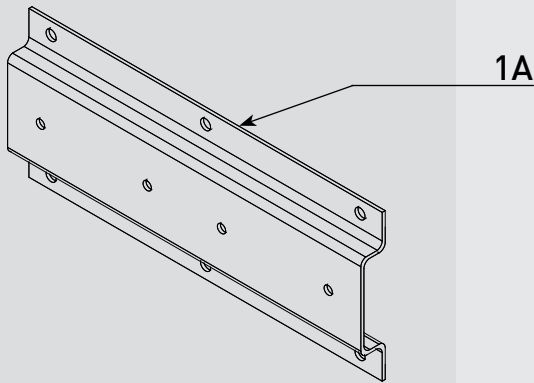
DUAL ASSEMBLIES



PARTS

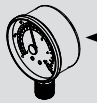
Turbine Series - 75500FGX

1



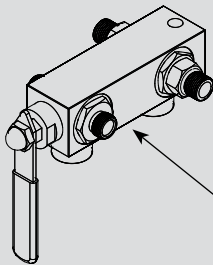
1A

2



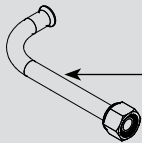
2A

3



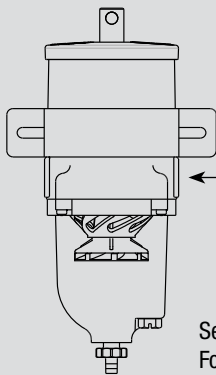
3A

4



4A

5



5A

See RSL0288
For Complete 500FG
Parts Breakdown

| Part # | Description |
|---------------------------|--|
| 1A | Mounting Bracket - Bracket only |
| 2A RK19669 RK19667 | Vacuum Gauge (30" Hg) - 3 needles: Theshold (red), Max Change Out (Red - Adjustable), Gauge (Black) <i>Optional</i> - Compound Gauge Kit (Vacuum 30" HG / Pressure 15psi) |
| 3A RK 15390 RK15419 | 6-Port Ball Valve - 1.75 in. Body Valve Rebuild Kit - For 2.0 in. Valve Body Only |
| 4A | Rigid Tubing Kit - Includes (1ea.) Tube, Ferrule and Fitting |
| 5A | Turbine Fuel Filter - 500FG Series See Cutsheet RSL0288 for available Parts and Accessories |

Accessories and Parts Available (Not Shown)

| | | |
|----|-------------------------------------|--|
| 6A | RK 15211 | Complete Seal Service Kit - 500 Series Filters (<i>Requires 2</i>) |
| 6B | RK33802 | WIF Probe Kit - 1/2"-20 UNF - Requires 6D |
| 6C | RK30880E | WIF Sensor and Light Kit - 1/2"-20 UNF |
| 6D | RK 14329 RK 14321 | Water Detection Module - 12 vdc Water Detection Module - 24 vdc |
| 7A | 2010SM-OR 2010TM-OR 2010PM-OR | Replacement Element 2 micron Replacement Element 10 micron Replacement Element 30 micron |
| 8A | | Bowl Gasket - Included in 6A |
| 8B | RK15405 | Bowl Kit (2002 to Present) - Includes 8A, 9A and 9B **Bowl has 5/8"-11 drain port |
| 8C | RK 15279-01 | Bowl Kit (Before 2002) - Includes 8A and 9B **Bowl has 7/8"-14 drain port |
| 9A | | Self-venting Drain Kit (<i>2002 to Present - Use with 8B</i>) |
| 9B | RK 20126 | Bowl Plug Kit |
| 9C | RK 30488 | Self-venting Drain Kit (<i>Before 2002 - Use with 8C</i>) |

Valve Operations

