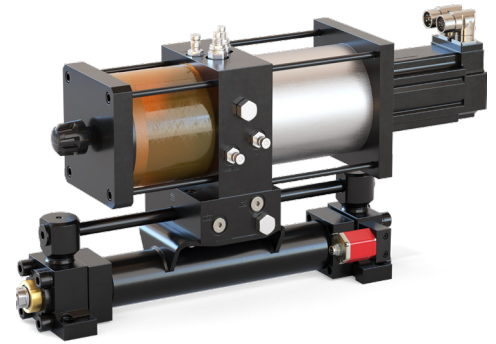


Detached HAS

Innovative Solutions from Parker
Industrial Cylinder Division

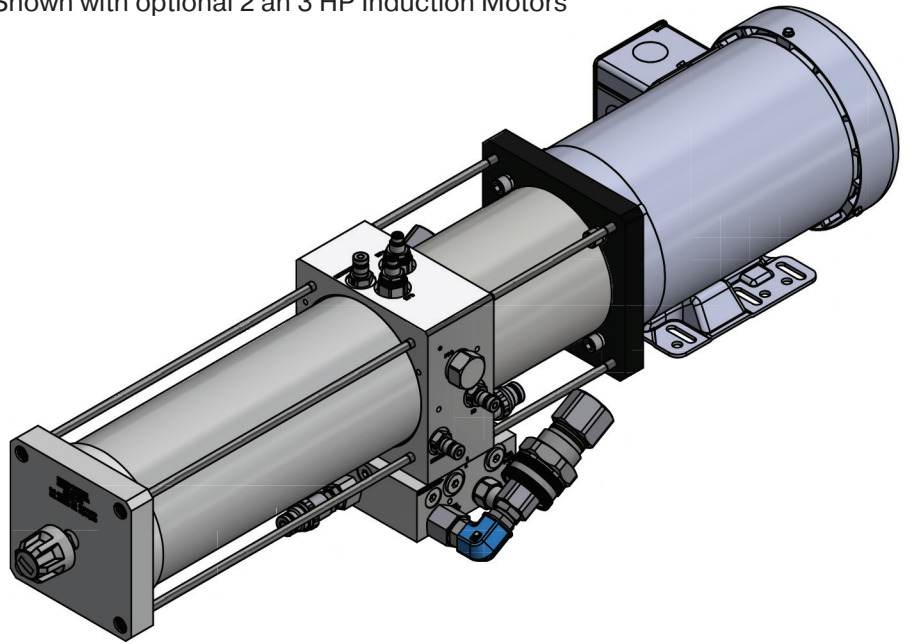


Customer Value Proposition:

Parker Hannifin Industrial Cylinder Division has developed a hybrid actuation system (HAS) that is ideal for linear motion applications, suitable for both mobile and industrial markets.

The new hybrid design combines the controllability of electromechanical actuators with the power density, longer life, and resistive force capabilities of a traditional hydraulic system. The result is an all-in-one actuation system that eliminates the screw wear points commonly found in electromechanical cylinders and the need for a hydraulic power unit, hoses and valving.

Shown with optional 2 and 3 HP Induction Motors



59 Series connect under pressure couplers located on each side of HAS lower manifold for connection to cylinder

Contact Information:

Parker Hannifin Corporation
Cylinder Division
500 S. Wolf Rd.
Des Plaines, IL 60016

phone 847 892 2400
fax 800 892 1008
cylquote@support.parker.com

www.parker.com/cylinder
www.parker.com/localizedpower

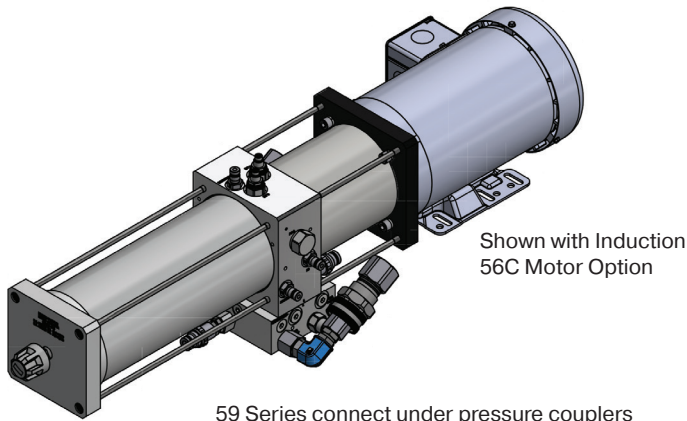
Product Features:

- Suitable selection when space is limited on cylinder installation and HAS controllability is preferred
- Fitted with Parker 59 Series connect under pressure connections
- Flush clean to ISO 16/14/11 and filled with fluid choice
- Hose assemblies determined and provided by quoting distributor. Distributor provided hose assemblies provided with male SAE-8 fittings. (3/4-16 UNF-2A)
- Power pack detached from cylinder when shipped



ENGINEERING YOUR SUCCESS.

HAS 500 Detached Supplement

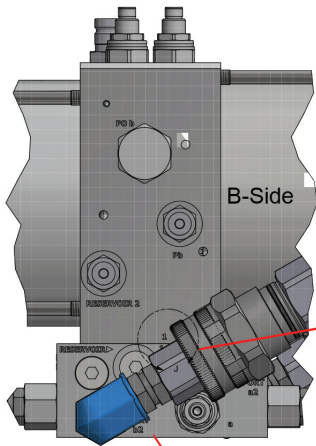


Shown with Induction 56C Motor Option

59 Series connect under pressure couplers located on each side of HAS lower manifold

Push and Pull valve selections are specified in the HAS model code. for proper operation Cylinder Port “a2” must be connected to the cylinder Cap (blind) End. “b2” must be connected to the cylinder’s Head (rod) End.

Never Operate without both hoses connected
Proper Coupler Connection is obtained when Orange O-Ring is no longer visible on 59 Series Nipple located on HAS Power Pack



“b2” or Cylinder (Head rod) End Connection

“a2” located on opposite side

Detached HAS Units are matched to appropriate cylinder and must be purchased as an assembly.

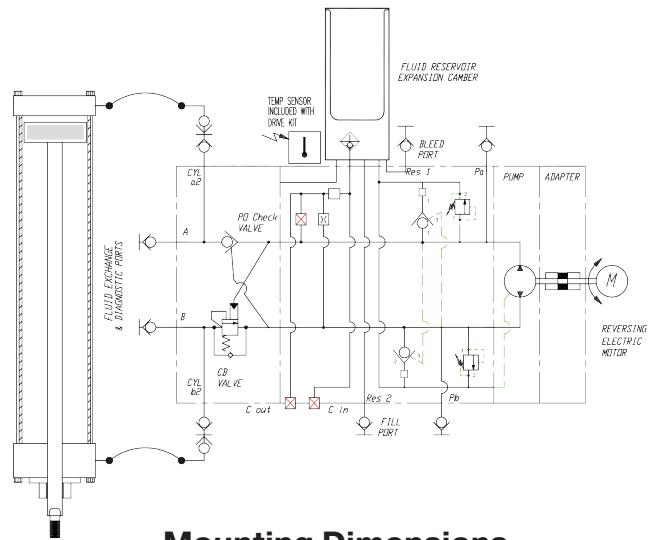
HAS Detached units are flushed and filled as standard HAS units with integral power packs.

Units are fitted with flexible hose assemblies installed on the cylinder.

Hoses supplied must have male 3/4-16 (SAE -8) on each end.

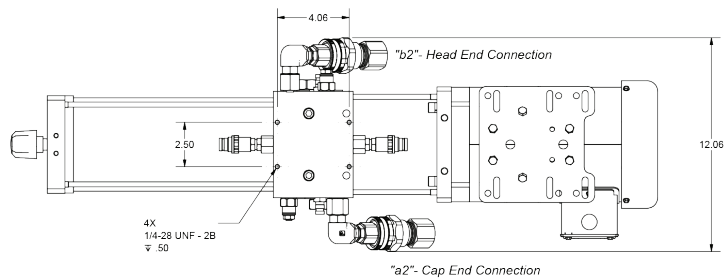
Unit is detached with the use of Parker 59 Series connect under pressure couplers. Nipples mounted on HAS unit, couplers on cylinder hose ends.

Hydraulic Schematic



Mounting Dimensions

When using an induction motor, Motor and HAS mounting must be used to support added weight



Power Pack maybe mounted Horizontal and Vertical with Reservoir UP. Vertical mounting with Reservoir Down, or horizontal with “A” side up is not recommended. Consult Factory for more details. Refer to HAS Catalog HY08-4005-1 for additional information.

