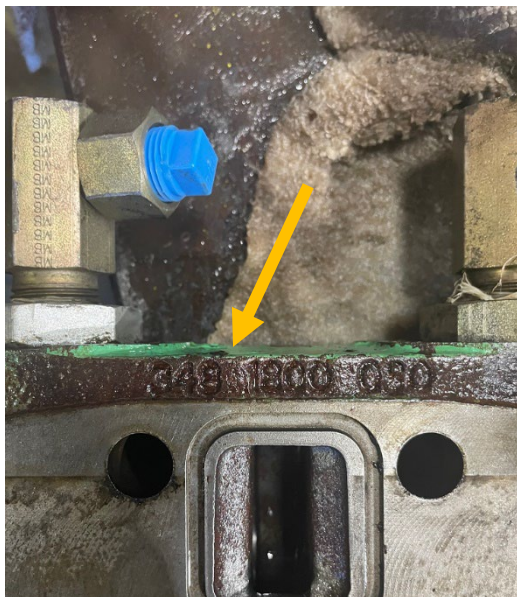
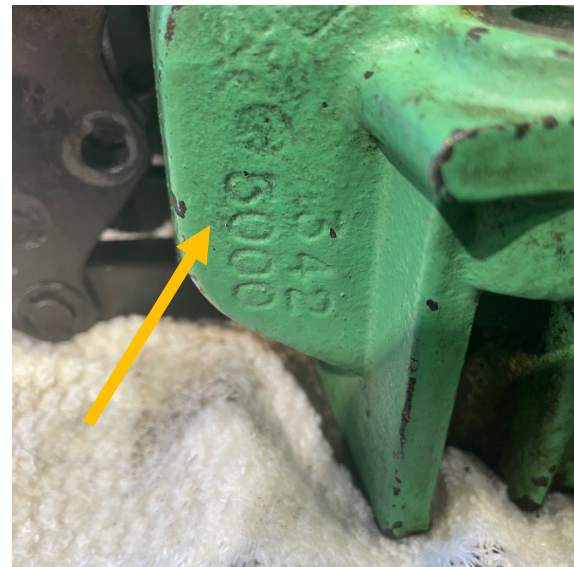
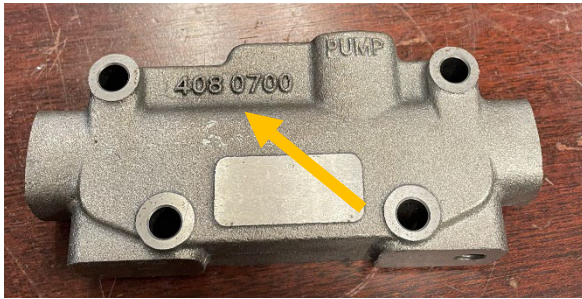


Parker-Gresen Casting Identification Guide

There are many clues that can help salespeople, maintenance technicians, and end users identify mobile sectional valves. These valves can be very difficult to identify, especially when they are found on an old piece of equipment. One way to identify sectional valves is by decoding the numbers that can be found on the castings. This quick reference guide will help identify active and legacy Gresen valves in the field using casting numbers that are stamped on the housing. Below are examples of what these casting codes look like and where they can be found on a section housing. Use the table beginning on the next page to determine what series valve you have and confirm which series to replace an obsolete assembly with. For assistance, please contact the Technical Services team at Hydraulic Valve Systems by emailing HVD.technical@support.parker.com



Casting	Description	Status - Recommended Series Replacement
550	300 Valve (Before 12/89)	Obsolete - No Suggested Replacement
575	400 Valve (Before 12/89)	Obsolete - No Suggested Replacement
995	Really Old SP 1-Spool Valve	Obsolete - No Suggested Replacement
1341	WP 1-Spool Valve	Obsolete - No Suggested Replacement
1342	WP 2-Spool Valve	Obsolete - No Suggested Replacement
1343	WP 3-Spool Valve	Obsolete - No Suggested Replacement
1614	25P Work Section	Obsolete - DVG20
1624	25P Right Integral Work Section	Obsolete - DVG20
1644	25P Right End Cover	Obsolete - DVG20
1645	25P Regen Work Section	Obsolete - DVG20
1664	25P Float Work Section	Obsolete - DVG20
1724	25P Left Integral Section	Obsolete - DVG20
1760	25P Right Integral Section (Deere)	Obsolete - DVG20
1764	25P Right Integral Section	Obsolete - DVG20
1766	25P Regen Integral Section	Obsolete - DVG20
1814	CP Parallel Work Section (Before 2/73)	Obsolete - DVG20
1815	CP Left Inlet Cover	Obsolete - DVG20
1816	CP Right Outlet Cover (Before 2/73)	Obsolete - DVG20
1862	CP Left Inlet Cover	Obsolete - DVG20
1886	CP Mid-Inlet Section (Before 2/73)	Obsolete - DVG20
1914	CP Lockout Work Section (Before 2/73)	Obsolete - DVG20
2701	SP 1-Spool Valve	Obsolete - No Suggested Replacement
2702	SP 2-Spool Valve	Obsolete - No Suggested Replacement
2703	SP 3-Spool Valve	Obsolete - No Suggested Replacement
2711	SPK 1-Spool Valve (Float)	Obsolete - No Suggested Replacement
2712	SPK 2-Spool Valve (Float)	Obsolete - No Suggested Replacement
2713	SP - 2 spool	Obsolete - No Suggested Replacement
2737	SPK 2-Spool (Ford Float Valve)	Obsolete - No Suggested Replacement
2753	SPK 3-Spool Valve (Float)	Obsolete - No Suggested Replacement
2818	WJL	Obsolete - No Suggested Replacement
2822	SSK 2-Spool Valve (Series)	Obsolete - No Suggested Replacement
3000	25P Left End Integral Work Section	Obsolete - DVG20
3001	25P Left End Integral Work Section	Obsolete - DVG20
3002	25P Left End Integral Float Work Section	Obsolete - DVG20
3122	25P Left End Integral Float Work Section	Obsolete - DVG20
3473	40P Valve	Obsolete - No Suggested Replacement
3487	25P Left End Section	Obsolete - DVG20
3488	25P Right End Section	Obsolete - DVG20
3910	V31 Flow Control Work Section	Obsolete - No Suggested Replacement
3953	25P/V40/V42 Mid-Inlet Section	Obsolete - DVG20
6306	25P Cover	Obsolete - DVG20
6550	CS Series Work Section	Obsolete - No Suggested Replacement
6556	CS Right End Cover	Obsolete - No Suggested Replacement
6557	CS Left End Cover	Obsolete - No Suggested Replacement
6721	CP Parallel Work Section	Obsolete - V20
6732	CP Lockout Work Section	Obsolete - V20
6734	CP Self Leveling Section	Obsolete - V20
6770	CP/V20 Right End Cover	Obsolete - V20
6825	CP/V20 Mid-Inlet Section	Obsolete - V20
6860	40P Self Leveling Section	Obsolete - No Suggested Replacement
6887	V20 Unloading Section	Active
7121	CT Tandem Work Section (2/73 to 2/76)	Obsolete - No Suggested Replacement
7697	CP Parallel Work Section (After 2/76)	Obsolete - V20

7698	CT Tandem Work Section (After 2/76)	Obsolete - No Suggested Replacement
7736	CP/V20 Flow Control Left Inlet Cover	Obsolete - V20
7820	CP/V20 Utility Section (Solenoid)	Obsolete - V20
8045	V42 Parallel Work Section	Obsolete - DVG35
8046	V42 Parallel Float Work Section	Obsolete - DVG35
8072	V20 Parallel Work Section	Active
8089	25P/V40/V42 Left Inlet Cover	Obsolete - DVG35
8090	25P/V40/V42 Right Top Outlet Cover	Obsolete - DVG35
8091	V40/V42 Right End Outlet Cover (Before 1/95)	Obsolete - DVG35
8112	V20 Tandem Work Section	Active
8138	V42 Regen Work Section	Obsolete - DVG35
8287	V42 Right Outlet Cover (Solenoid)	Obsolete - DVG35
8288	V42 Left Inlet Cover (Solenoid)	Obsolete - DVG35
8364	V20 C, LS, & PC Work Sections	Active
8375	V20 Lockout Work Section	Active
8398	V20 Left Inlet Cover	Active
8545	V70/V86/V90 Right Outlet Cover	Obsolete - DVG35
8565	V70/V90 Left Inlet Cover	Obsolete - DVG35
8566	V70/V90 Parallel Work Section	Obsolete - DVG35
8567	V70/V90 Tandem Work Section	Obsolete - DVG35
8575	V20 Lockout Section	Active
8644	V20 Right Top Outlet Cover	Active
8675	V42 Tandem Work Section	Obsolete - DVG35
8916	V50 Left Inlet Cover	Obsolete - DVG35
8917	V50 Parallel Work Section	Obsolete - DVG35
8918	V50 Tandem Work Section	Obsolete - DVG35
8919	V50 Right Outlet Cover (Before 1/94)	Obsolete - DVG35
8939	V70/V90 Regen Work Section	Obsolete - DVG35
8988	V70 Left Inlet Cover (Deere)	Obsolete - DVG35
8989	V70 Right Outlet Cover (Deere)	Obsolete - DVG35
10762	V20 RT Tandem Work Section	Active
10954	V20 RP Parallel Work Section	Active
11483	V20 Series Work Section	Active
11571	V20 Lockout Work Section	Active
11789	V30 End Type Work Section	Obsolete - DVA/DVG20
11792	V30 Center Type Work Section	Obsolete - DVA/DVG20
11819	V30 Inlet/Outlet Cover	Obsolete - DVA/DVG20
12138	V20/V50 Mid-Inlet Conversion Section	Active
12409	V50 Left Inlet Cover (JI Case)	Obsolete - DVG35
20011	300/400 Valve (After 12/89)	Obsolete - No Suggested Replacement
20645	V40 Parallel Work Section	Obsolete - DVG35
20685	V40 Tandem Work Section	Obsolete - DVG35
20729	V40 Parallel Float Work Section	Obsolete - DVG35
20736	V30 Inlet/Outlet Cover (Deere)	Obsolete - DVA/DVG20
20929	V40 Left Inlet Cover (Solenoid)	Obsolete - DVG35
20931	V40/V42 Right Outlet Cover (After 1/95)	Obsolete - DVG35
21105	V40 Regen/3-Way Work Section	Obsolete - DVG35
21243	V20/V30 Mid-Inlet Conversion Section	Active
21353	V50 Left Inlet Cover (Deere)	Obsolete - DVG35
21762	V56 Work Section	Obsolete - DVG35
21780	V56 Left Inlet Cover	Obsolete - DVG35
22213	V40 Series Work Section	Obsolete - DVG35
22691	V50/V56 Right Outlet Cover (After 1/94)	Obsolete - DVG35
22952	V20 Unloading Section	Active

23123	V86 Work Section	Obsolete - No Suggested Replacement
23146	V11 1-Spool Valve	Obsolete - V10
23221	V86 Left Inlet Cover	Obsolete - No Suggested Replacement
23357	V11 2-Spool Valve	Obsolete - V10
23438	V11 3-Spool Valve	Obsolete - V10
23592	V10 Old Style Standard Work Section	Active
23613	V10 Left Inlet Cover	Active
23627	V10 Right Outlet Cover	Active
23937	V26 Work Section	Obsolete - No Suggested Replacement
23962	V10 Solenoid Work Section	Active
24026	V56 Left Inlet Cover	Obsolete - No Suggested Replacement
24054	V40 Load Sense Work Section	Obsolete - DVG35
24065	V16 Pressure Comp./Load Sense Work Sect.	Obsolete - V20
24193	V20/V40 Mid-Inlet Conversion Section	Active
24707	V20/V40 Transition/Mid-Inlet Section	Active
24707	V40 Inlet w/ Unloader	Obsolete - DVG35
24990	V10 New Style Standard Work Section	Active
25033	V16 Solenoid Work Section	Obsolete - V20
25128	V16 Solenoid Inlet Cover	Obsolete - V20
25178	V16 Standard Inlet Cover	Obsolete - V20
25205	V10 Lockout casting	Active