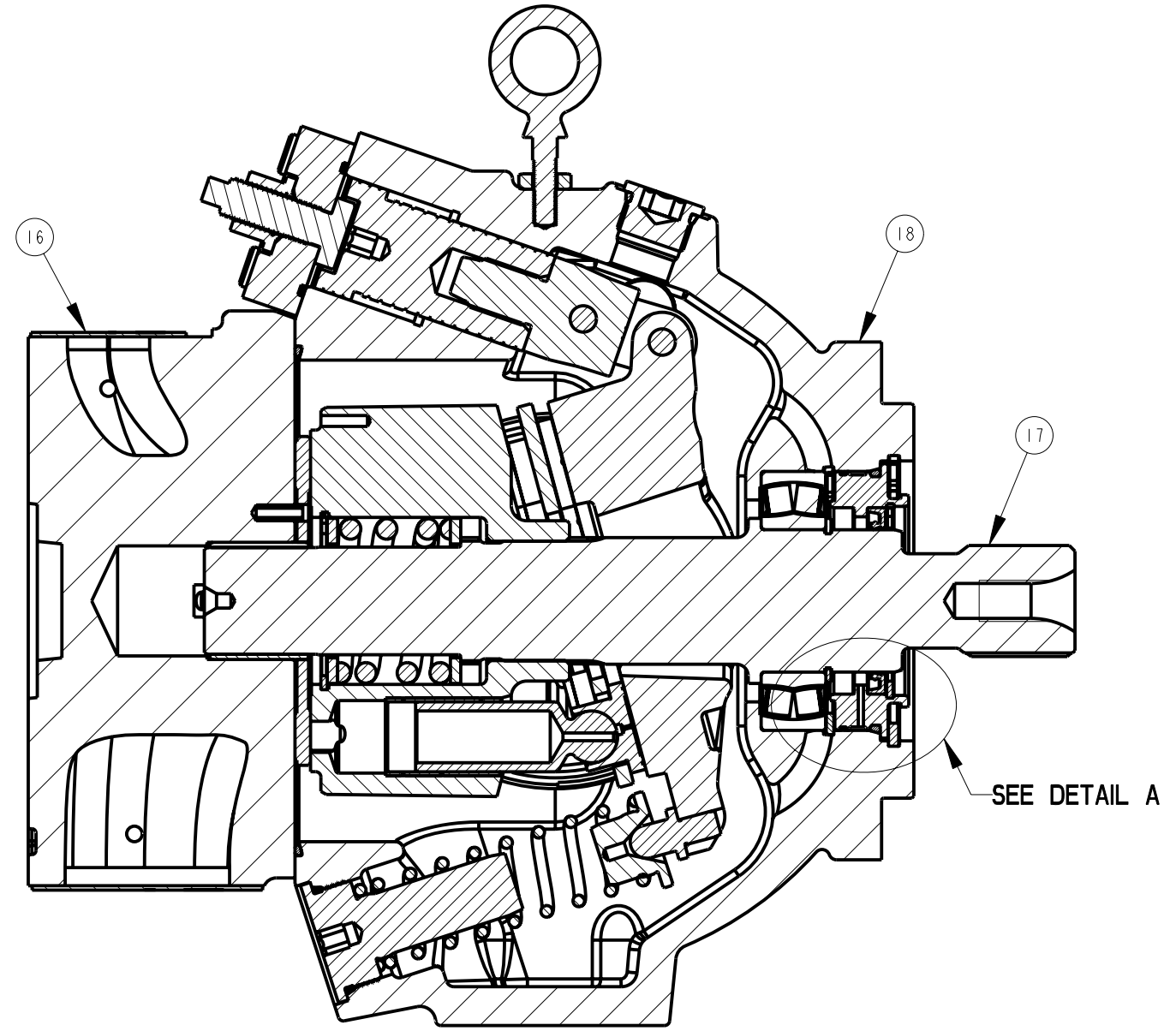
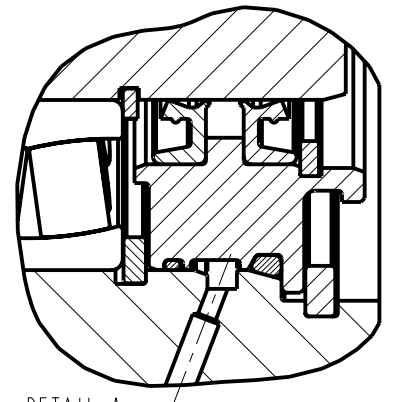


SECTION C-C

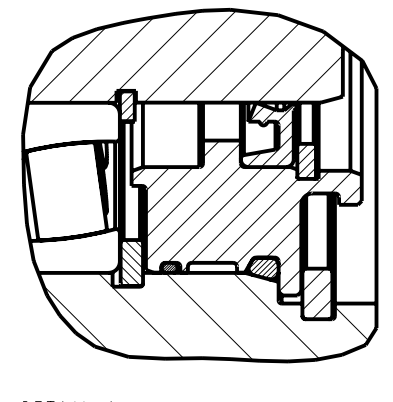
NOTES:
1 PUMP SHOWN IS A RIGHT HAND (CW) ROTATION PUMP. LEFT HAND (CCW) ROTATION PUMPS HAVE OUTLET GAUGE PORT REVERSED.



SECTION A-A

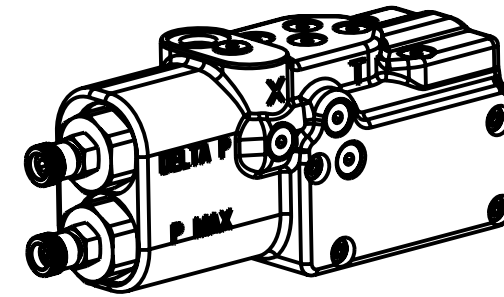


DETAIL A
DUAL SHAFT SEAL ASSEMBLY (D/T OPTION)
P2-105-0210-02□



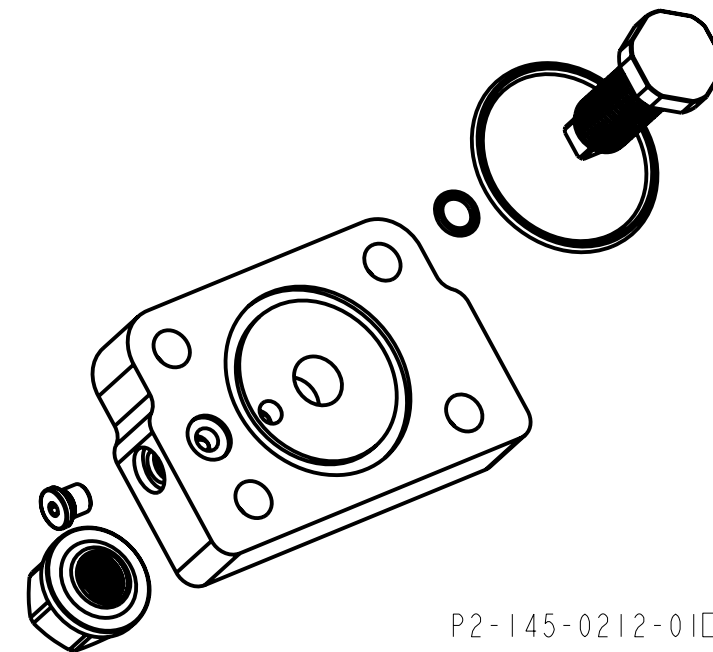
DETAIL A
SINGLE SHAFT SEAL ASSEMBLY (N/V OPTION)
P2-105-0210-01□

COMPENSATOR KITS
ITEM 20

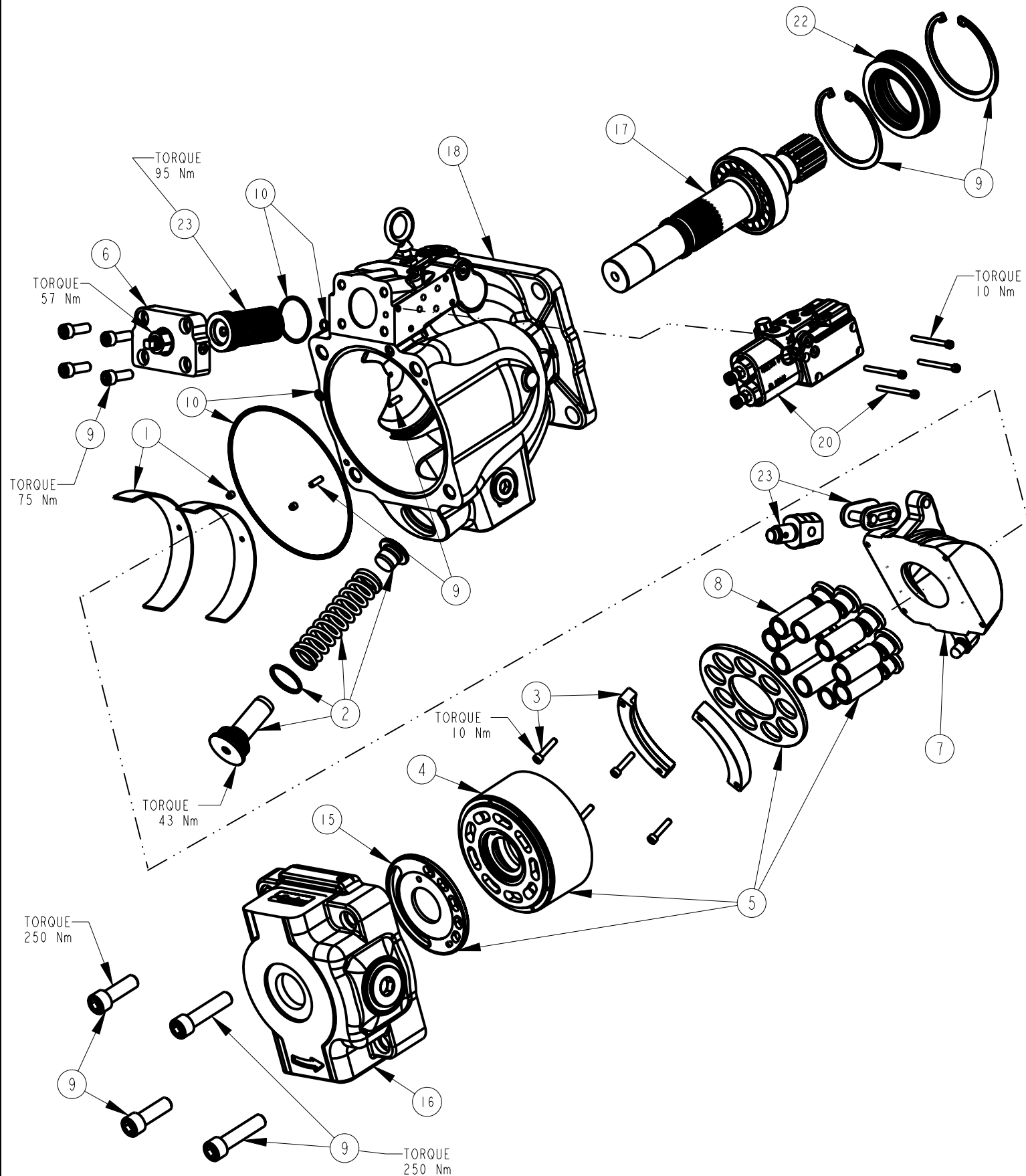


PA	A	20	P2-075-0806-07□	1	COMPENSATOR ASSY
	B	20	P2-075-0806-08□	1	COMPENSATOR ASSY
RA	A	20	P2-075-0806-05□	1	COMPENSATOR ASSY
	B	20	P2-075-0806-06□	1	COMPENSATOR ASSY
LA	A	20	P2-075-0806-01□	1	COMPENSATOR ASSY
	B	20	P2-075-0806-02□	1	COMPENSATOR ASSY
LB	A	20	P2-075-0806-03□	1	COMPENSATOR ASSY
	B	20	P2-075-0806-04□	1	COMPENSATOR ASSY
TA	A	20	P2-075-0806-11□	1	COMPENSATOR ASSY
TC	B	20	P2-075-0806-12□	1	COMPENSATOR ASSY
TB	A	20	P2-075-0806-13□	1	COMPENSATOR ASSY
TD	B	20	P2-075-0806-14□	1	COMPENSATOR ASSY

MAX. VOLUME ASSEMBLY
ITEM 6

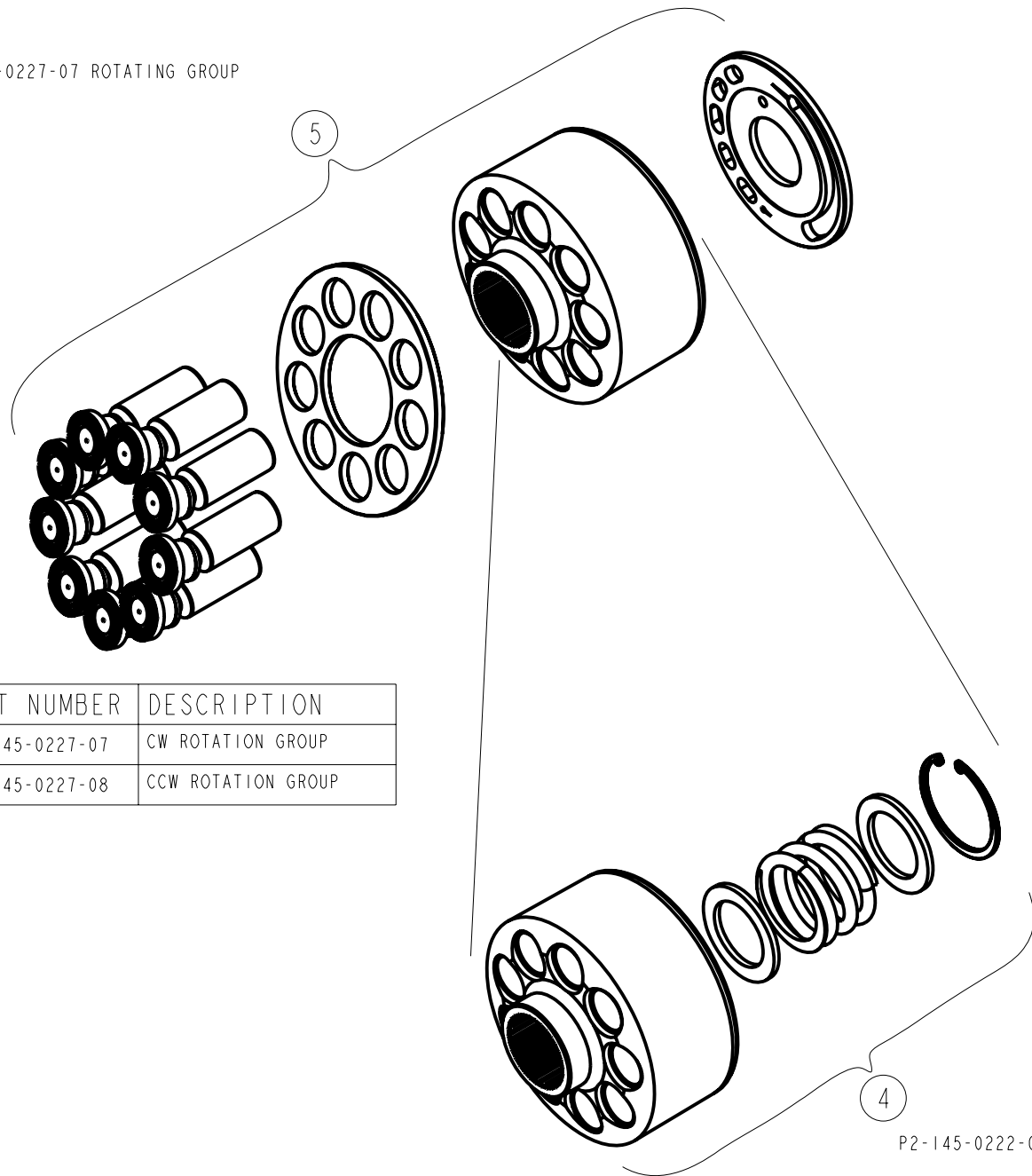


P2-145-0212-01□



ROTATING GROUP / BARREL KIT
ITEM 5
ITEM 4

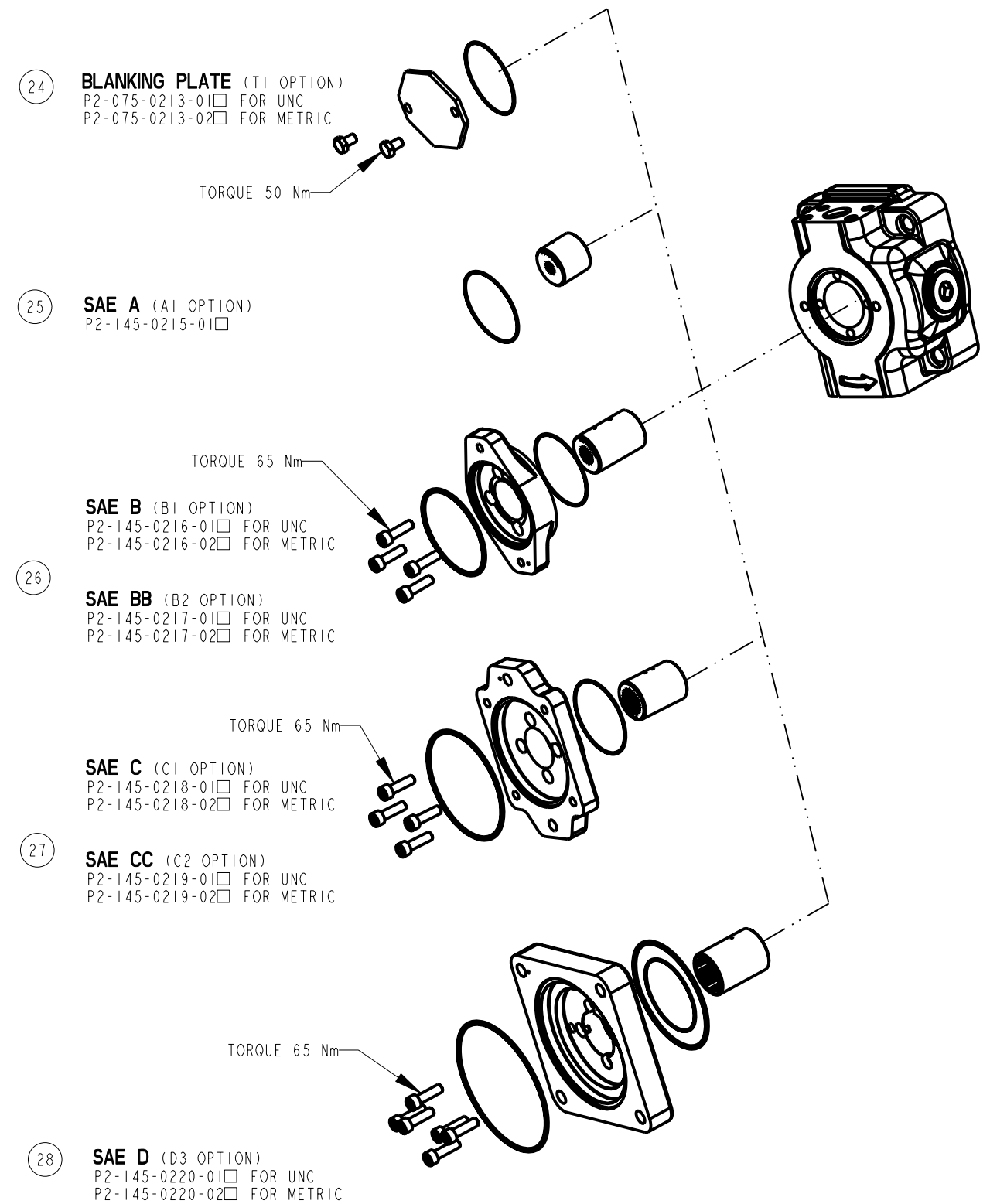
SHOWN:
P2-145-0227-07 ROTATING GROUP



PART NUMBER	DESCRIPTION
P2-145-0227-07	CW ROTATION GROUP
P2-145-0227-08	CCW ROTATION GROUP

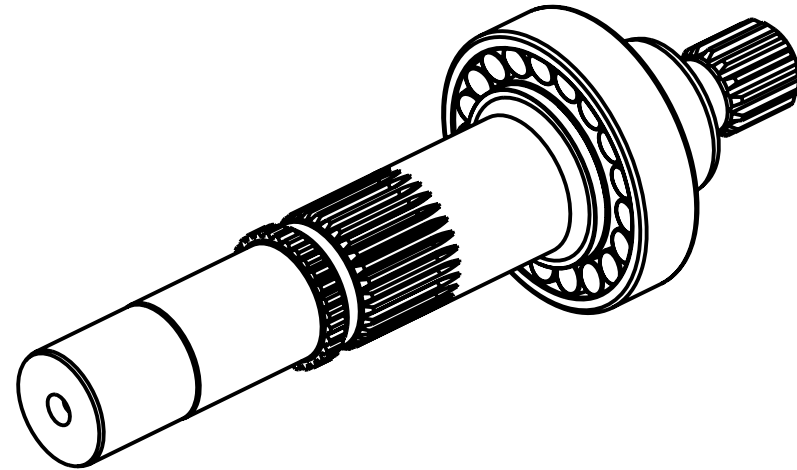
P2-145-0222-08 BARREL KIT

THRU DRIVE KITS



TITLE	SERVICE PARTS P2145 DESIGN SERIES 15	DRAWING NUMBER	P2-145-0411	REVISION	A	STATUS	PR	SHEET 4 OF 8
-------	---	----------------	-------------	----------	---	--------	----	--------------

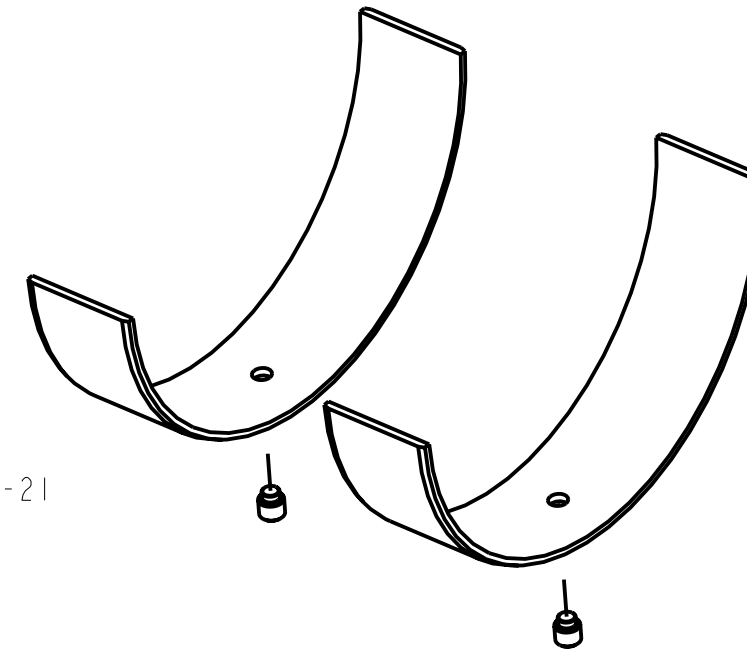
SHAFT ASSEMBLY KITS
ITEM 17



	SHAFT ASSEMBLY	DESCRIPTION
C1	P2-145-0238-36	C SPLINE THRU
C1	P2-145-0238-37	C SPLINE NOT THRU
D1	P2-145-0238-40	D SPLINE THRU
D1	P2-145-0238-41	D SPLINE NOT THRU
C5	P2-145-0238-46	C KEY THRU
C5	P2-145-0238-47	C KEY NOT THRU
C6	P2-145-0238-48	CC KEY THRU
C6	P2-145-0238-49	CC KEY NOT THRU
D3	P2-145-0238-50	D KEY THRU
D3	P2-145-0238-51	D KEY NOT THRU
C3	P2-145-0238-56	C SPLINE THRU NO UNDERCUT
C3	P2-145-0238-57	C SPLINE NOT THRU NO UNDERCUT
D2	P2-145-0238-60	D SPLINE THRU NO UNDERCUT
D2	P2-145-0238-61	D SPLINE NOT THRU NO UNDERCUT

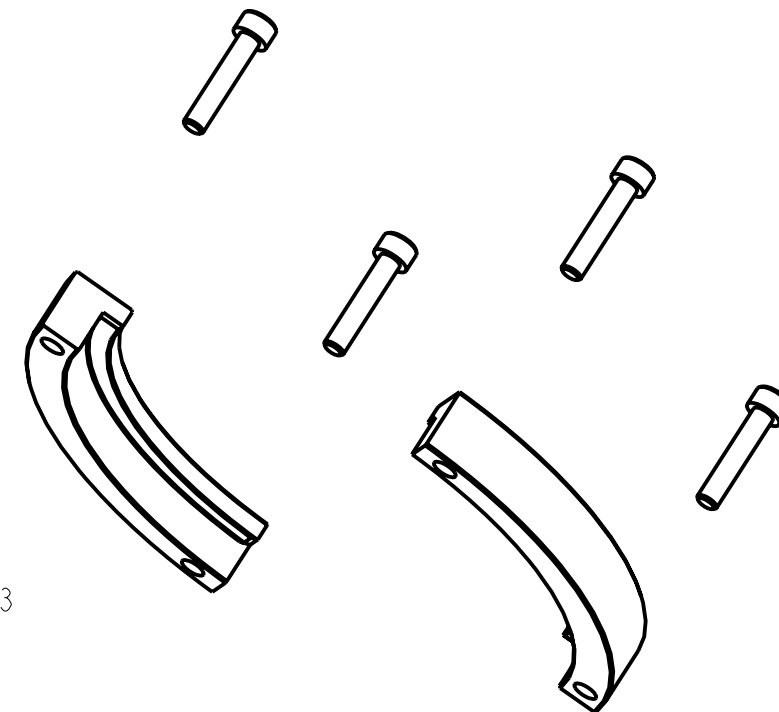
DRAWN BY	L. NAGEL	DATE	10FEB10	CHANGED BY	L. NAGEL	DATE	16DEC11	ECN NUMBER	715311
----------	----------	------	---------	------------	----------	------	---------	------------	--------

KIT SADDLE BEARING
ITEM 1



P2-145-0229-21

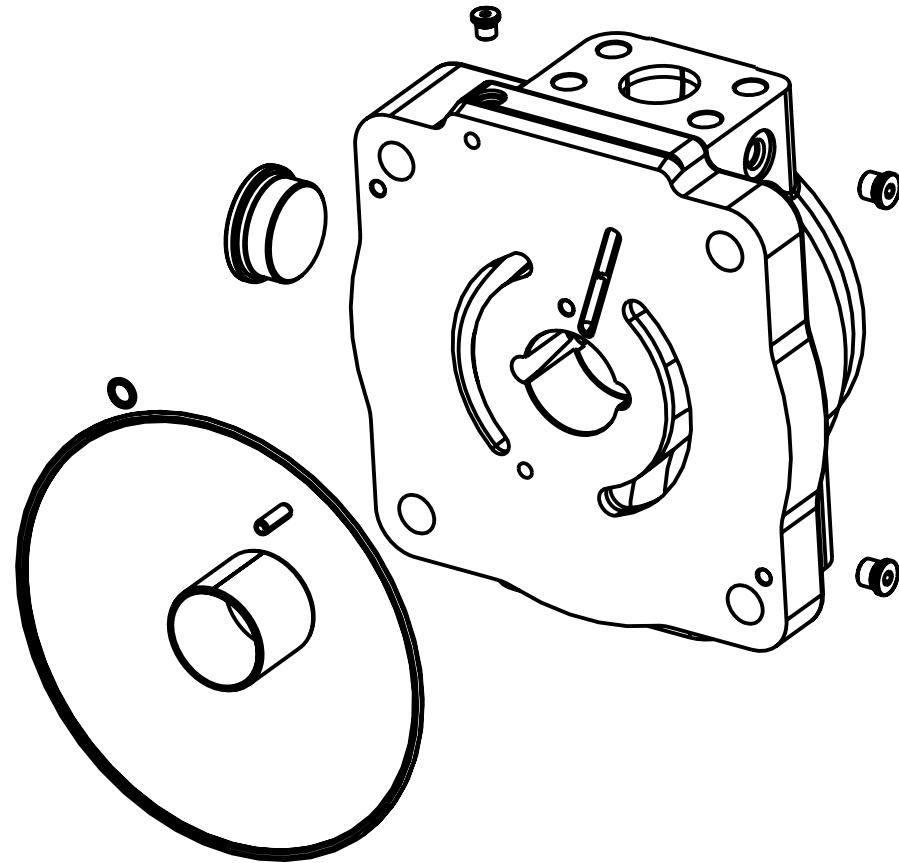
KIT FIXED CLEARANCE HOLD DOWN
ITEM 3



P2-145-0229-23

TITLE	SERVICE PARTS P2145 DESIGN SERIES 15	DRAWING NUMBER	P2-145-0411	REVISION	A	STATUS	PR	SHEET 5 OF 8
-------	---	----------------	-------------	----------	---	--------	----	--------------

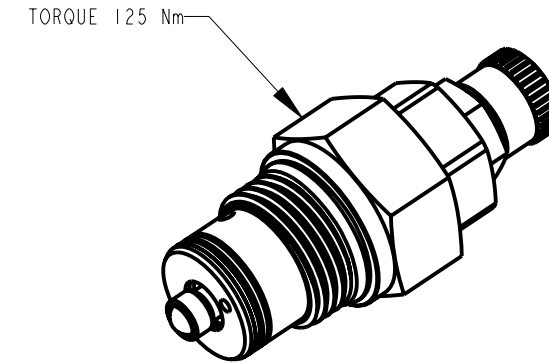
COVER ASSEMBLY KITS
ITEM 16



	THRDS		COVER ASSEMBLY	DESCRIPTION
L	A	SI	P2-145-0226-01□	SIDE PORTS, CCW, UNC
	A	NOT SI	P2-145-0226-02□	SIDE PORTS, CCW, UNC, THRU
	B	SI	P2-145-0226-03□	SIDE PORTS, CCW, METRIC
	B	NOT SI	P2-145-0226-04□	SIDE PORTS, CCW, METRIC, THRU
R	A	SI	P2-145-0226-05□	SIDE PORTS, CW, UNC
	A	NOT SI	P2-145-0226-06□	SIDE PORTS, CW, UNC, THRU
	B	SI	P2-145-0226-07□	SIDE PORTS, CW, METRIC
	B	NOT SI	P2-145-0226-08□	SIDE PORTS, CW, METRIC, THRU

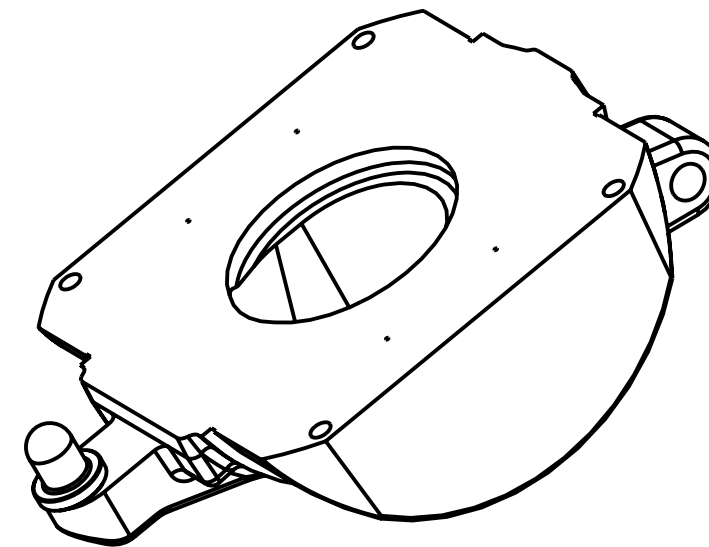
DRAWN BY	L. NAGEL	DATE	10FEB10	CHANGED BY	L. NAGEL	DATE	16DEC11	ECN NUMBER	715311
----------	----------	------	---------	------------	----------	------	---------	------------	--------

TORQUE CONTROL CARTRIDGE
ITEM 19



P2-000-0803 □

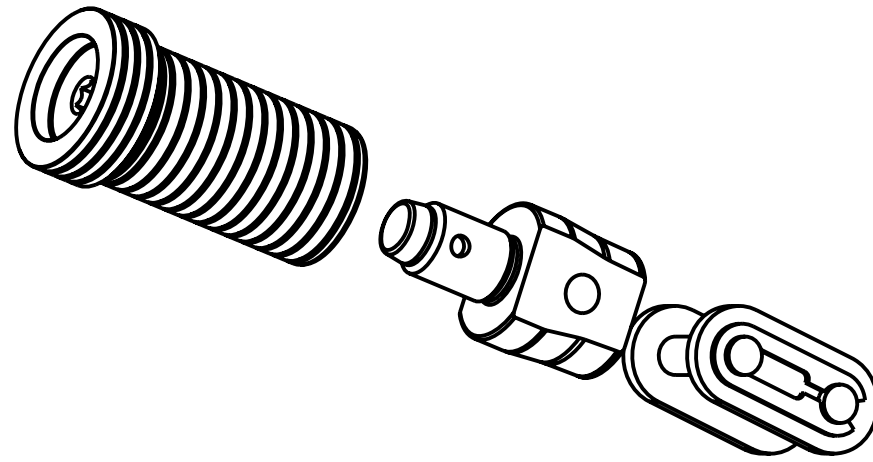
KIT SWASH PLATE
ITEM 7



P2-145-0221-05

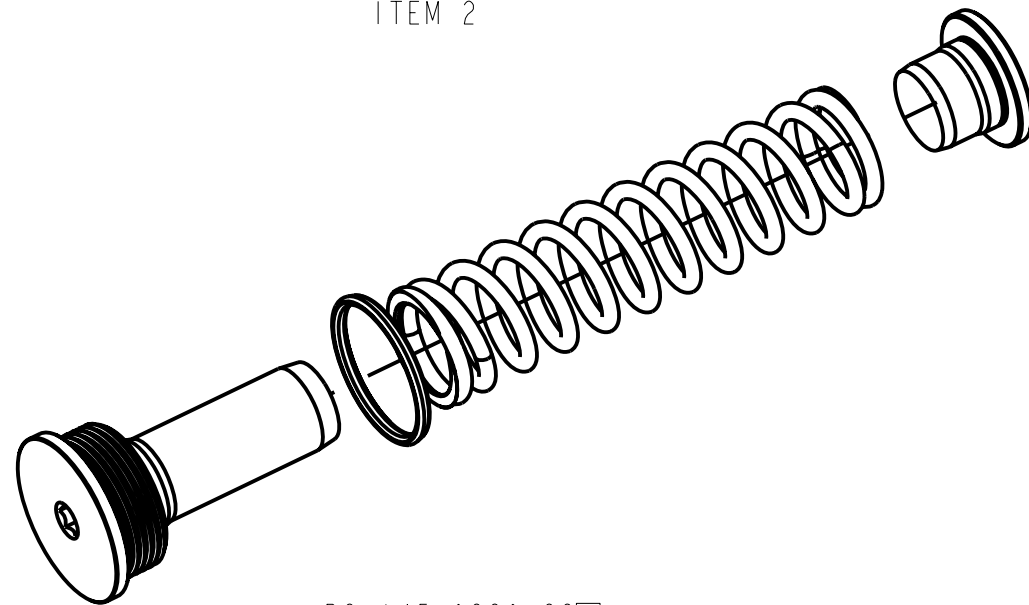
TITLE	DRAWING NUMBER	REVISION	STATUS	SHEET
SERVICE PARTS P2145 DESIGN SERIES 15	P2-145-0411	A	PR	6 OF 8

KIT SERVO PISTON ITEM 23



PART NUMBER	DESCRIPTION	
P2-145-0229-19	KIT SERVO PISTON 40%	USED EXEPT WITH TC & TD OPTION
P2-145-0229-20	KIT SERVO PISTON 70%	USED WITH TC & TD OPTION

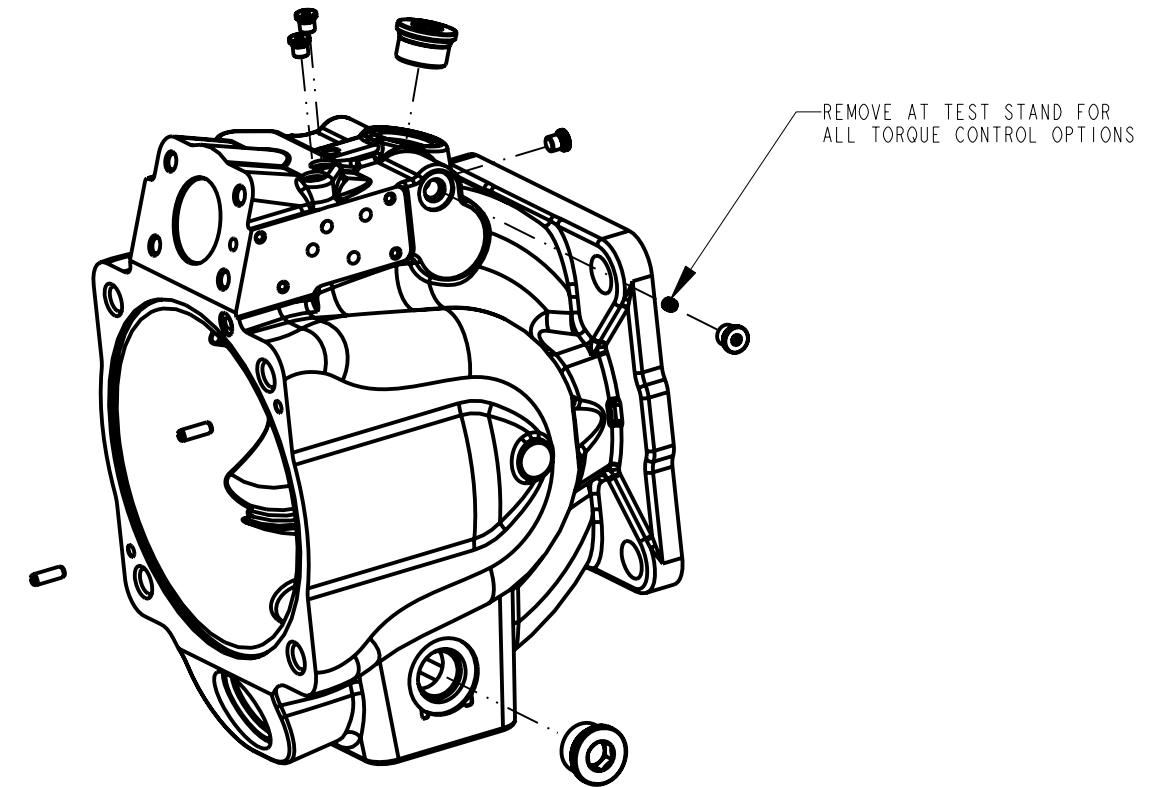
KIT SERVO SPRING ITEM 2



P2-145-0229-22□

DRAWN BY	DATE	CHANGED BY	DATE	ECN NUMBER
L. NAGEL	10FEB10	L. NAGEL	16DEC11	715311

KIT HOUSING ITEM 18



MTG-PILOT	SEAL OPTION	THRDS	PART NUMBER	DESCRIPTION
C	N/V	B	P2-145-0221-40□	MACHINING C-PILOT 1 SEAL METRIC HOUSING
	D/T	B	P2-145-0221-41□	MACHINING C-PILOT 2 SEAL METRIC HOUSING
D	N/V	B	P2-145-0221-42□	MACHINING D-PILOT 1 SEAL METRIC HOUSING
	D/T	B	P2-145-0221-43□	MACHINING D-PILOT 2 SEAL METRIC HOUSING
C	N/V	A	P2-145-0221-44□	MACHINING C-PILOT 1 SEAL UNC HOUSING
	D/T	A	P2-145-0221-45□	MACHINING C-PILOT 2 SEAL UNC HOUSING
D	N/V	A	P2-145-0221-46□	MACHINING D-PILOT 1 SEAL UNC HOUSING
	D/T	A	P2-145-0221-47□	MACHINING D-PILOT 2 SEAL UNC HOUSING

TITLE	DRAWING NUMBER	REVISION	STATUS	
SERVICE PARTS P2145 DESIGN SERIES 15	P2-145-0411	A	PR	SHEET 7 OF 8

DRAWN BY	DATE	CHANGED BY	DATE	ECN NUMBER
L. NAGEL	10FEB10	L. NAGEL	16DEC11	715311

ASSEMBLY, DIS-ASSEMBLY AND REPAIR NOTES

DISASSEMBLY STEPS FOR ENTIRE PUMP

1. REMOVE COVER SCREWS AND COVER
2. DE-STROKE PUMP TO MINIMUM ANGLE WITH MAX VOLUME SCREW
3. REMOVE FIXED CLEARANCE HOLD DOWN SCREWS AND HOLD DOWN PARTS
4. REMOVE ROTATING GROUP (BARREL, SLIPPER RETAINER AND PISTONS)
5. REMOVE SHAFT SEAL CARRIER
6. REMOVE SHAFT
7. REMOVE BIAS SPRING PLUG, SPRING AND RETAINER
8. REMOVE MAX. VOLUME ASSY
9. REMOVE SERVO PISTON
10. REMOVE SWASHPLATE ASSEMBLY

SHAFT SEAL REPLACEMENT

1. REMOVE SEAL CARRIER ONLY
2. REMOVE OLD SEAL
3. INSPECT SHAFT
4. IF SHAFT IS WORN INSTALL NEW SEAL
IN INNER LOCATION FOR SINGLE SEAL
APPLICATIONS (SEE SHEET 1).
REPLACE SHAFT FOR DUAL SEAL APPLICATIONS

NOTES:



