

# **GOLD CUP<sup>®</sup>** **P/M24-30 Fixed Displacement** Spare Parts and Exploded Views

HY28-2682-03/GC/US

Effective: October 2023



ENGINEERING YOUR SUCCESS.

## Hydraulic Pump Division and Denison Hydraulics

The Hydraulic Pump Division of Parker Hannifin was formed in 2004 when our significant piston pump business was expanded through the acquisition of **Denison Hydraulics**. The addition of Denison allowed us to marry the wealth of knowledge that both companies have in the design, manufacture, and application of piston products in both open circuit and closed circuit system applications. Since before WWII, Denison products have been chosen for Military test stand applications and for shipboard hydraulic applications being recognized as technology leaders.

The heavy duty **GOLD CUP®** series of pumps and motors in this catalog represent a broadening of our product offering with hydrostatic transmission applications in marine, drilling, and shredding applications, among others. The tried and true design of the **GOLD CUP®** product line incorporates features such as integral servo and replenishing pump, hot oil shuttle, and a unique servo control system; all of which combine to provide a rugged self contained package which can withstand the harshest of conditions and continue to perform with trouble free long life.

The division is a leading worldwide manufacturer of hydraulic components and systems for earthmoving and construction vehicles; for mining equipment; for pulp and paper, chemical and other processing equipment; for ships and ordnance equipment; and for such in-plant machines as machine tools, plastic molding, die casters, and stamping presses.



The product information, specifications, and descriptions contained in this publication have been compiled for the use and convenience of our customers from information furnished by the manufacturer; and we can not, and do not, accept any responsibility for the accuracy or correctness of any description, calculation, specification, or information contained herein. No such description, calculation, specification, or information regarding the products being sold has been made part of the basis of the bargain, nor has same created or amounted to an express warranty that the products would conform thereto. We are selling the goods and merchandise illustrated and described on this publication on an "as is" basis, and disclaim any implied warranty, including any warranty of merchantability or warranty of fitness for any particular purpose whatsoever, with respect to the goods and merchandise sold. All manufacturer warranties shall be passed on to our customers, but we shall not be responsible for special, indirect, incidental, or consequential damages resulting from the use of any of the products or information contained or described on this publication. Further, we reserve the right to revise or otherwise make product improvements at any time without notification.

### **WARNING - USER RESPONSIBILITY**

FAILURE OR IMPROPER SELECTION OR IMPROPER USE OF THE PRODUCTS DESCRIBED HEREIN OR RELATED ITEMS CAN CAUSE DEATH, PERSONAL INJURY AND PROPERTY DAMAGE.

This document and other information from Parker-Hannifin Corporation, its subsidiaries and authorized distributors provide product or system options for further investigation by users having technical expertise.

The user, through its own analysis and testing, is solely responsible for making the final selection of the system and components and assuring that all performance, endurance, maintenance, safety and warning requirements of the application are met. The user must analyze all aspects of the application, follow applicable industry standards, and follow the information concerning the product in the current product catalog and in any other materials provided from Parker or its subsidiaries or authorized distributors.

To the extent that Parker or its subsidiaries or authorized distributors provide component or system options based upon data or specifications provided by the user, the user is responsible for determining that such data and specifications are suitable and sufficient for all applications and reasonably foreseeable uses of the components or systems.

### **OFFER OF SALE**

The items described in this document are hereby offered for sale by Parker-Hannifin Corporation, its subsidiaries or its authorized distributor. This offer and its acceptance are governed by the provisions stated in the detailed "Offer of Sale" elsewhere in this document.

---

Pump Ordering Code .....	2
P/M24-30 Type F/G Sectional Views .....	4
P/M24-30 Type M/N Sectional Views .....	6
Section View - A - Input Shaft & Seal Retainer Assembly .....	8
Section View - A - Kits .....	11
P/M24-30 Shaft Sleeve Installation Tool Details .....	12
Section View - B - Housing, Barrel Bearing Assembly .....	13
Section View - C - Rotating Group Assembly .....	16
Section View - C - Kits .....	19
Section View - D - Pump/Motor Type - F & G - Port Block Assembly .....	21
Section View - D - Pump/Motor Type - M & N - Port Block Assembly .....	24
Offer of Sale .....	31

---

Notes:

1. Parts list and associated drawings shown in this bulletin are for standard volume model pump and motors only. All documentation for special "M2" modification model numbers must be verified with HPD Factory Representative prior to ordering parts for such products.
2. \* Indicates Special instructions or Considerations.
3. \*\* Indicates Common Parts.
4. N/A Indicates Not Available or Not Applicable.
5. All documentation represented in this bulletin is for standard production models only, (as follows):
  - 5.1. P24 = Design Level "D" Model Pump
  - 5.2. P30 = Design Level "B" Model Pump
  - 5.3. M24 = Design Level "D" Model Motor
  - 5.4. M30 = Design Level "A" Model Motor
6. See ordering code for configuration options.
7. All orientation references are described when viewing unit from main drive shaft.
8. Assembly part numbers with -0 suffixes, indicate Buna N (Nitrile) seal compound. For Ethylene Propylene, (EPR), compound, use -4 suffix. For Fluorocarbon compound, use -5 suffixes.
9. Detail part numbers for O-rings with 671/691 prefix, indicates Buna N (Nitrile) seal compound. For Ethylene Propylene, (EPR), compound, use -4 suffix. For Fluorocarbon compound, use -5 suffixes.
10. Drawings with items marked with double balloons indicate assemblies.



Pump/Motor



Displacement



Type



Shaft



Rotation



Seals



Design



Control &  
 Displacement  
 Features



Shuttle Valve  
 Features

Code	Pump/Motor
P	Pump
M	Motor

Code	Displacement
24	24.6 in <sup>3</sup> /rev (403 cc/rev)
30	30.6 in <sup>3</sup> /rev (501 cc/rev)

Code	Type
F	Fixed displacement
G	Fixed displacement with shuttle package (Motor only)
M	Fixed displacement with thru-drive (Motor only)
N	Fixed displacement with thru-drive & shuttle package (Motor only)

Code	Shaft
2	Keyed SAE - mechanical shaft seal
3	Splined SAE - mechanical shaft seal
7	Keyed SAE - double lip shaft seal
8	Splined SAE - double lip shaft seal
9	Keyed (long) SAE - double lip shaft seal
10	Keyed (long) SAE - mechanical shaft seal

Code	Rotation
R	Clockwise
L	Counterclockwise
N	Bidirectional

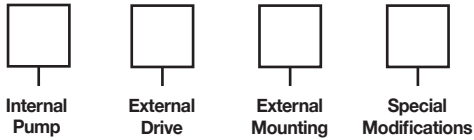
Code	Seals
1	Nitrile (Buna N)
4	EPR
5	Flourocarbon (Viton)

Design letter (assigned by manufacturer)

Control & Displacement Features		
Pump/Motor	Code	Reduced Displacement
P**F & M**F/M**G & M**M/M**N	0	Standard cam (19-degree)
	1	24 with 17-degree cam {22.0 in <sup>3</sup> /rev. (360 cc/rev.)}
		30 with 17-degree cam {27.2 in <sup>3</sup> /rev. (446 cc/rev.)}
	2	24 with 15-degree cam {19.3 in <sup>3</sup> /rev. (316 cc/rev.)}
		30 with 15-degree cam {24.2 in <sup>3</sup> /rev. (396 cc/rev.)}

Code	Shuttle Valve Features
Omit	M**F (Motors only)
0	None P**F & M**M (Pumps & Motors only)
0	Without Orifices M**G & M**N (Motors only)
2	With Orifices M**G M**N (Motors only)





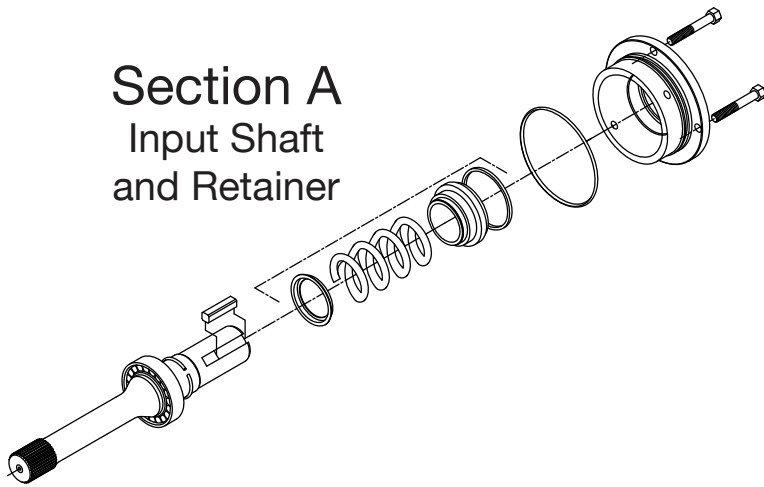
Code	Internal Pump
Omit	None M**F M**G M**M M**N P**F (Pumps & Motors only)

Code	External Drive
Omit	None (P**F, M**F & M**G only)
M	Steel Blanking Plate Less Coupling
B	SAE-B (SAE 101-2 & SAE 101-4) 24/30M/N
C	SAE-C (SAE 127-2 & SAE 127-4) 24/30M/N
D	SAE-D (SAE 152-4) 24/30M/N
E	SAE-E (SAE 165-4) 24/30M/N
F	SAE-F (SAE 177-4) 24/30M/N

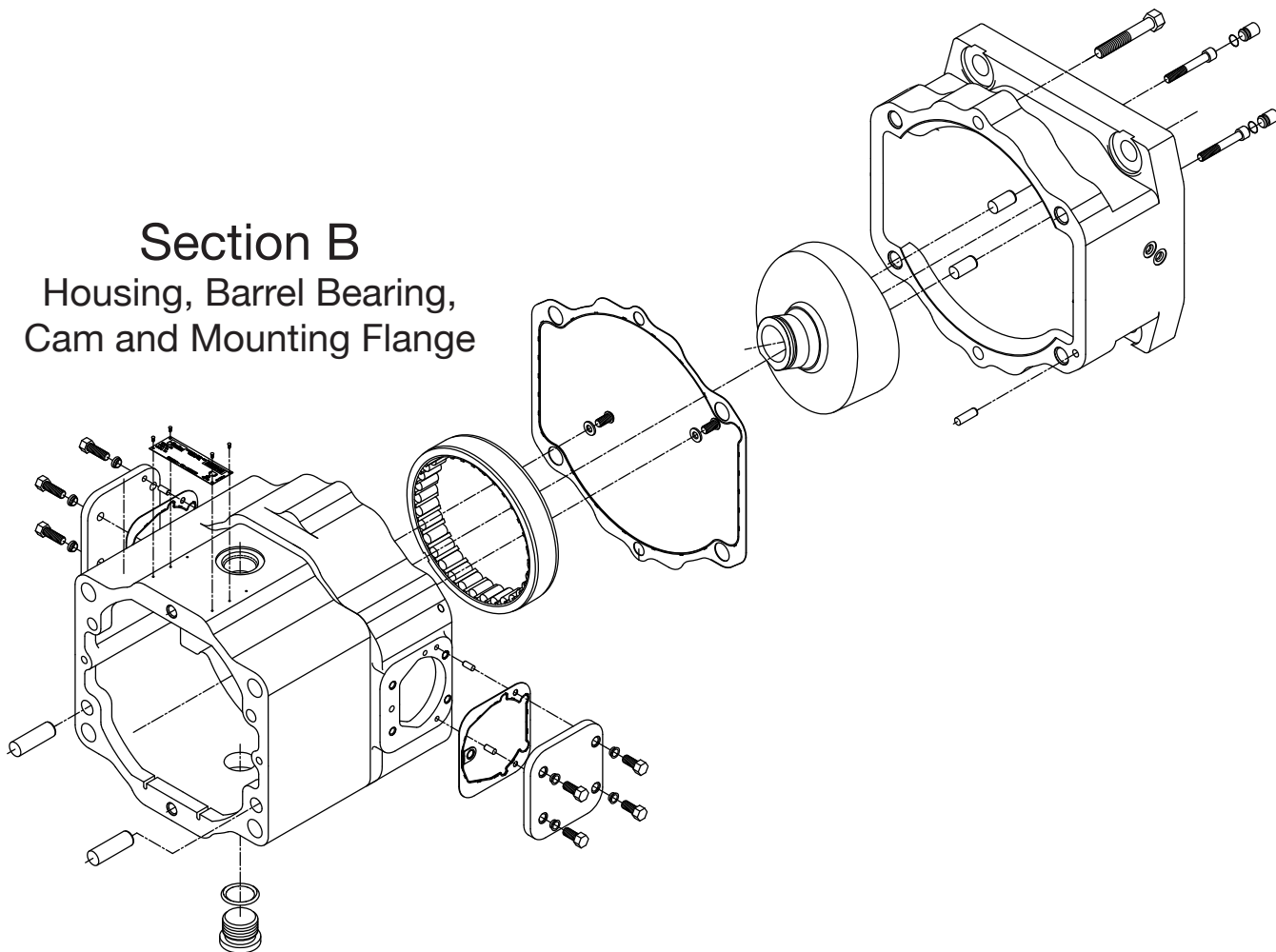
Code	External Mounting
0	No external pump mounted
1	External pump mounted (requires special modification "M2")(must be separately specified)

Code	Special Modifications
Omit	None (Unit Painted Black)
NP	No Paint
EX	ATEX APPROVED MOTOR
M2	Other special modification (example: bronze caged barrel bearing for low viscosity fluids, tandem pumps, etc.)

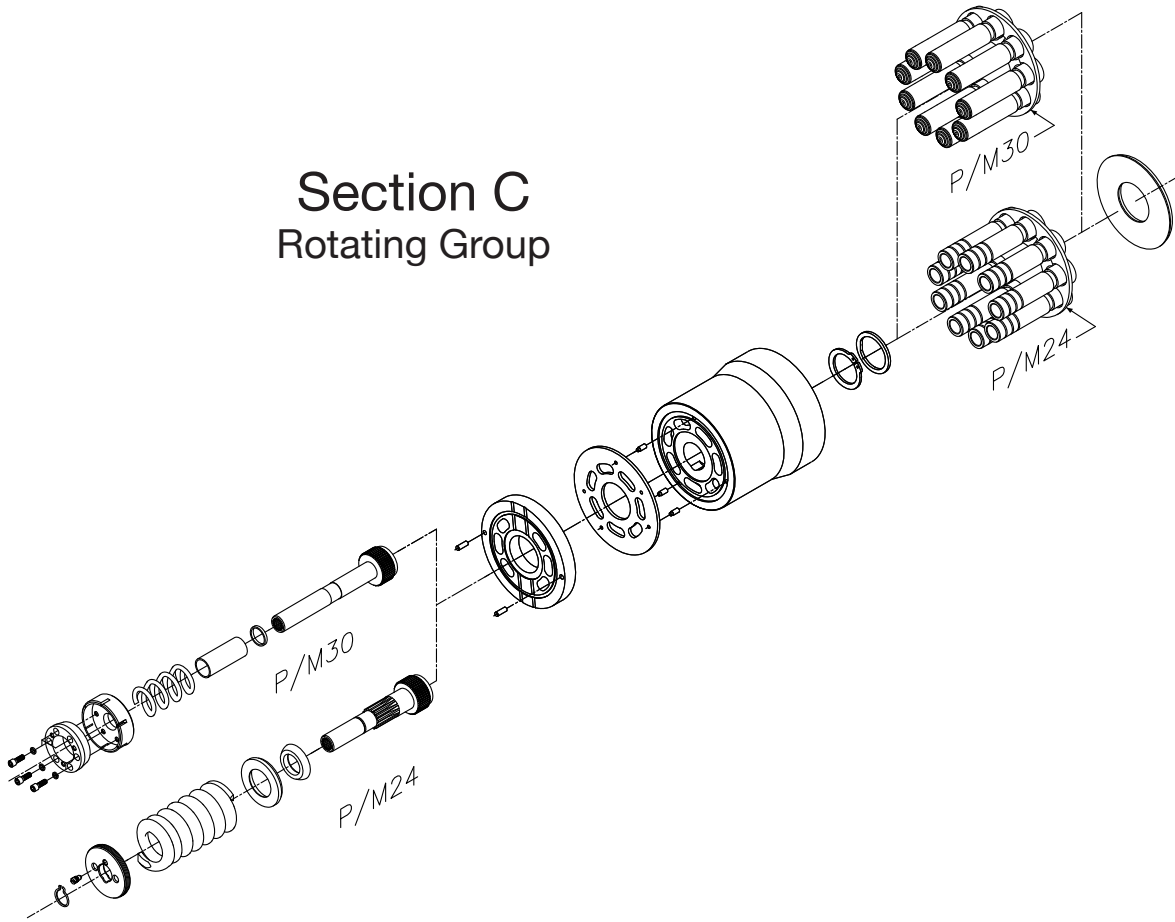
**Section A**  
Input Shaft  
and Retainer



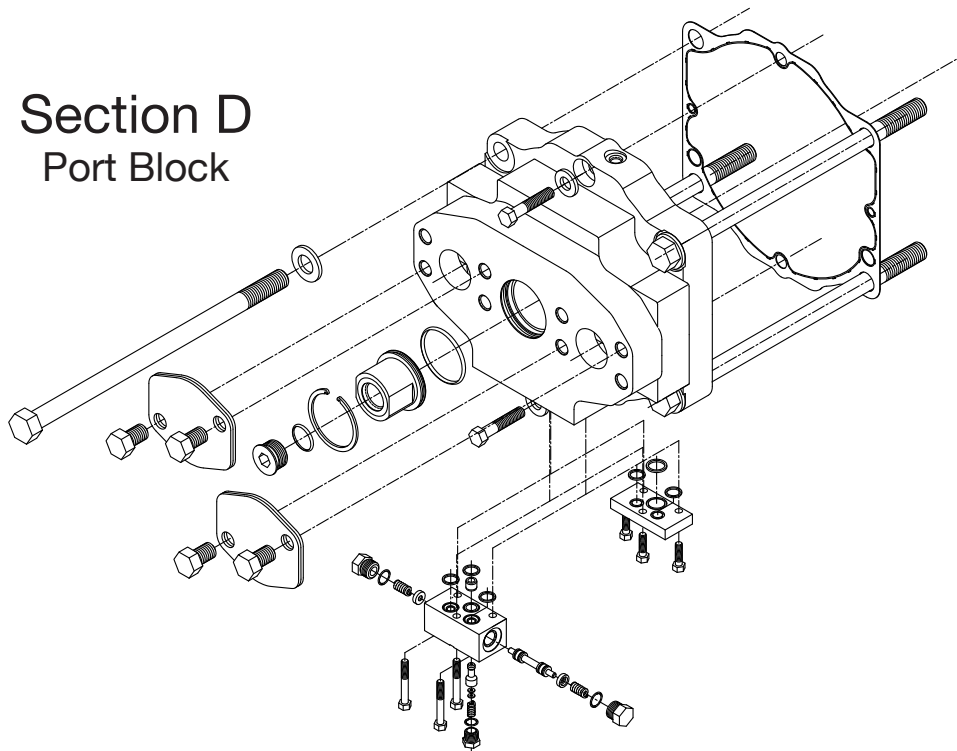
**Section B**  
Housing, Barrel Bearing,  
Cam and Mounting Flange



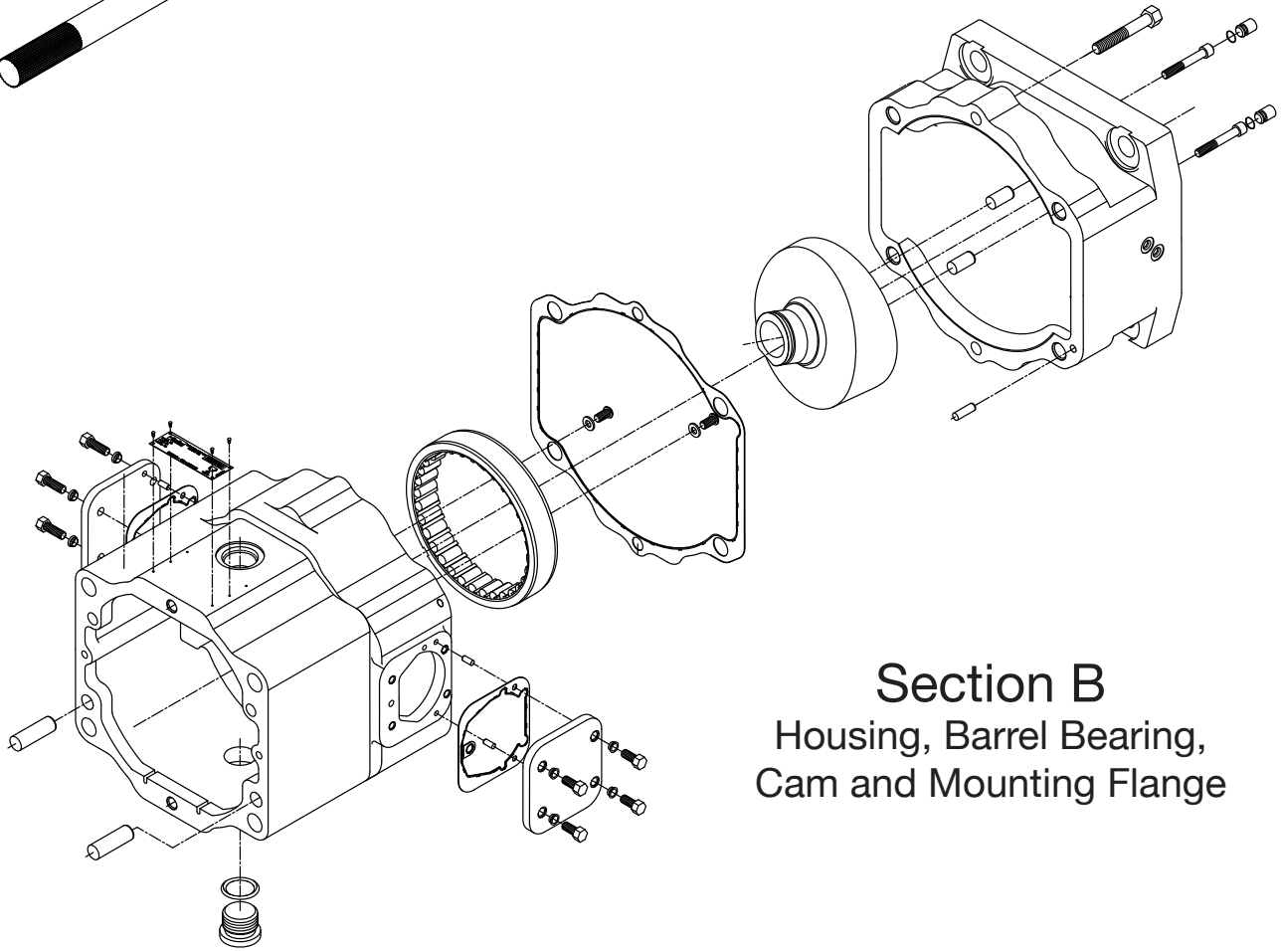
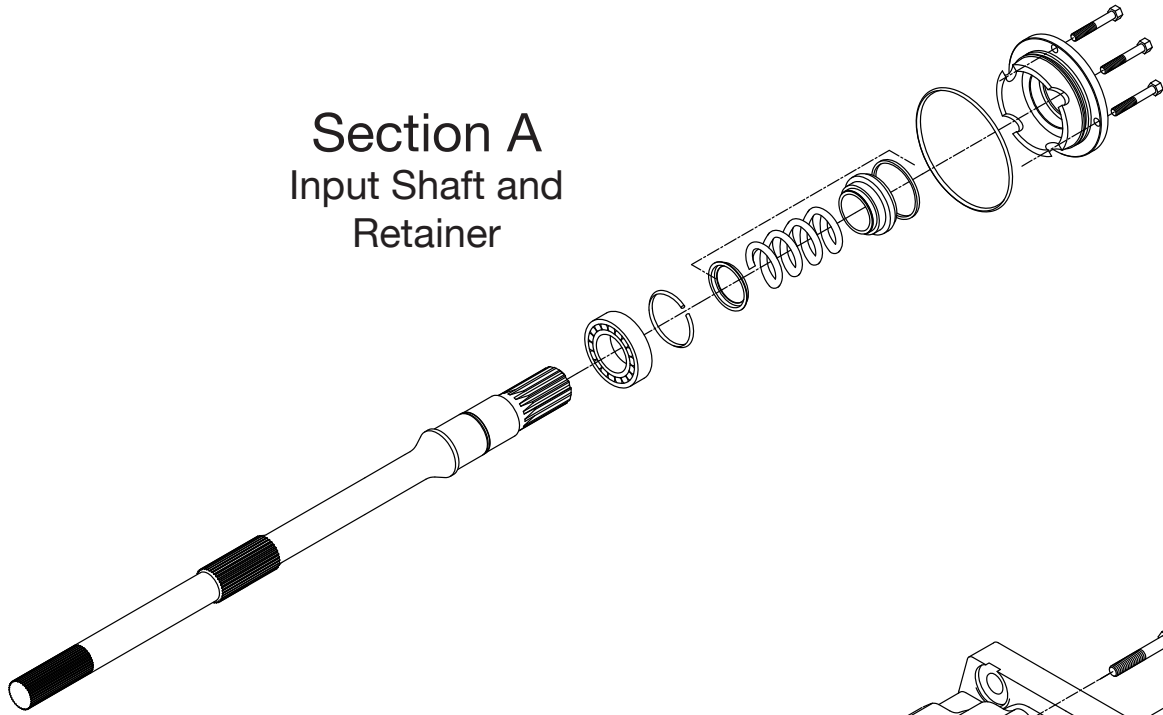
### Section C Rotating Group



### Section D Port Block

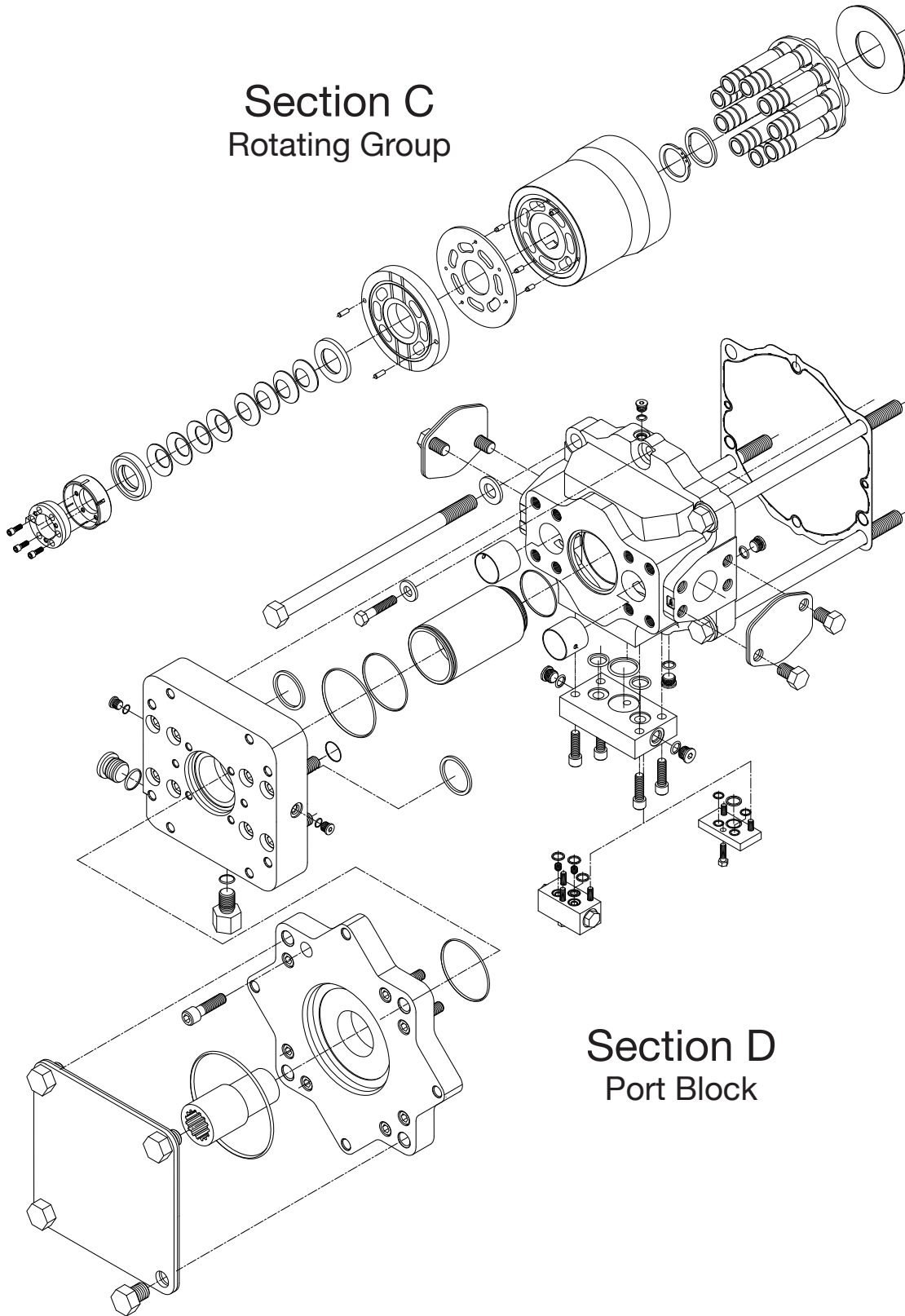


### Section A Input Shaft and Retainer



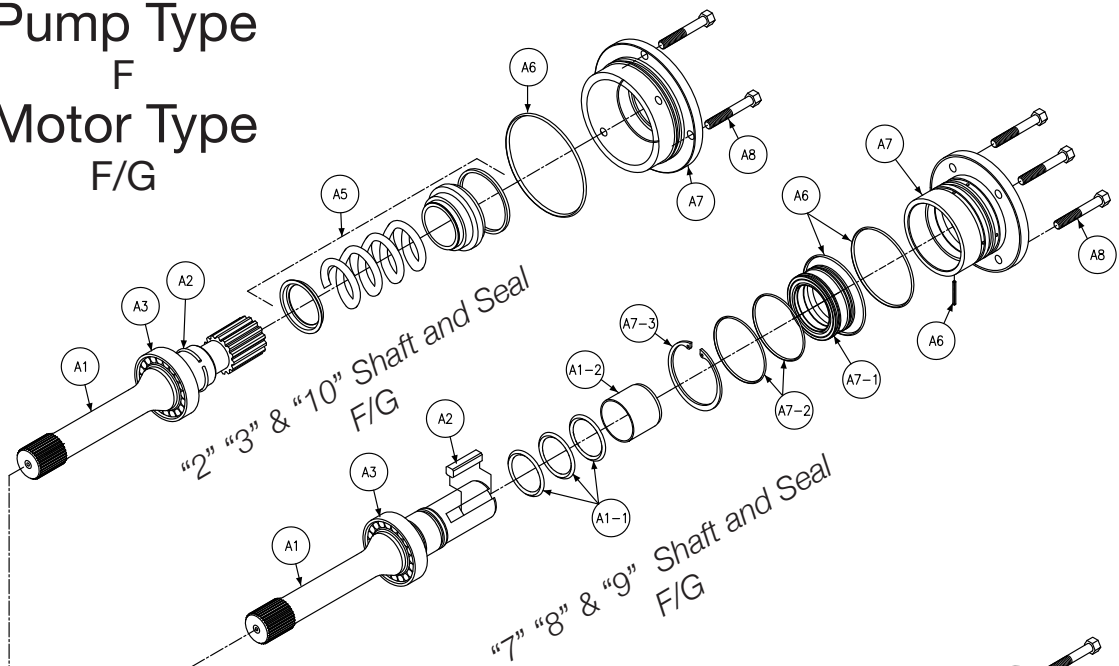
### Section B Housing, Barrel Bearing, Cam and Mounting Flange

### Section C Rotating Group

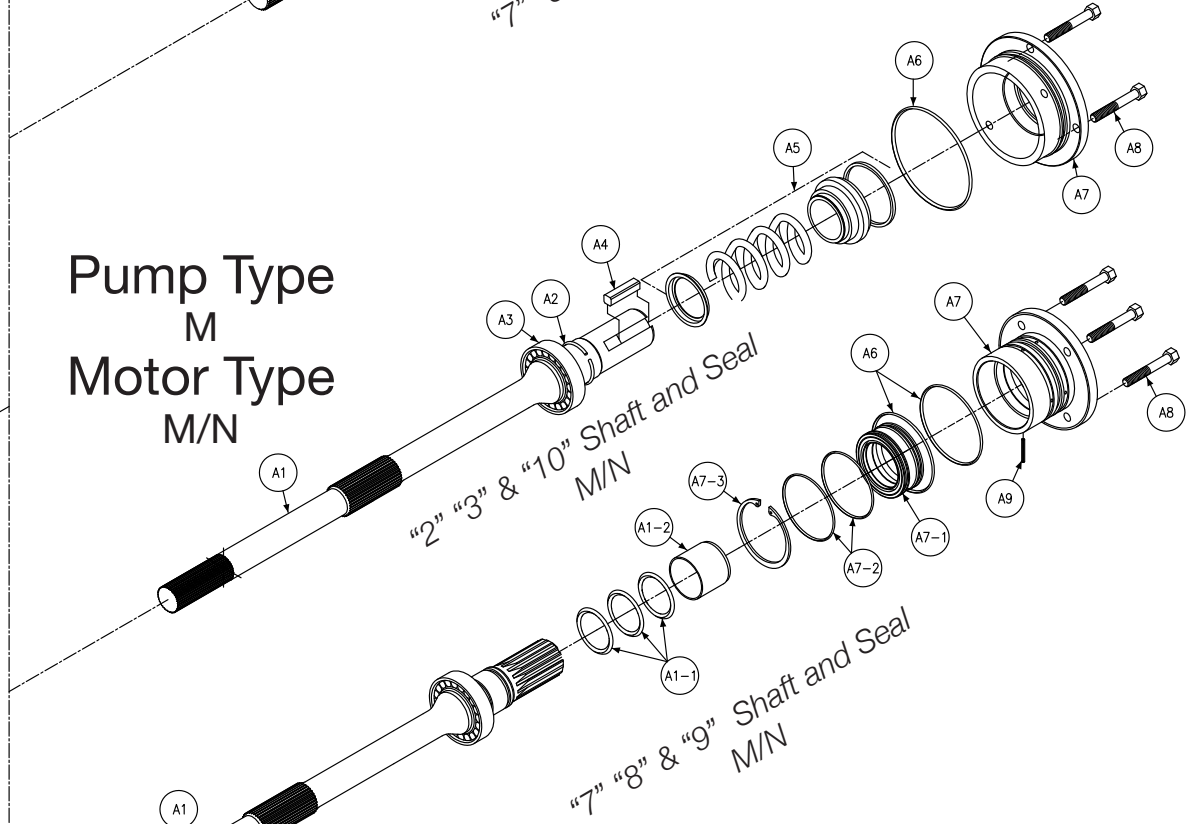


### Section D Port Block

Pump Type  
F  
Motor Type  
F/G



Pump Type  
M  
Motor Type  
M/N



Section A P/M24-30 Input Shaft and Retainer Assembly							
Balloon #	Pump/Motor	Type	Shaft Code	Seal Code	Item #	Description	Qty
A1	P	F	2	**	033-91140-0	Shaft, Keyed SAE-F, Mech Shaft Seal, No Rear Drive	1
	M	F/G					
	P	F	3	**	033-91139-0	Shaft, Spline SAE-F, With Neck, Mech Shaft Seal, No Rear Drive	
	M	F/G					
	P	F	7	**	*033-94118-0	Shaft, Keyed SAE-F, Double Lip Seal, No Rear Drive	
	M	F/G					
	P	F	8	**	*033-94177-0	Shaft, Spline SAE-F, With Neck, Double Lip Seal, No Rear Drive	
	M	F/G					
	P	F	9	**	*033-94192-0	Shaft, Keyed SAE-F, Double Lip Seal, No Rear Drive, Ext. Lg. Keyway	
	M	F/G					
	P	F	10	**	033-93610-0	Shaft, Keyed SAE-F, Mech Shaft Seal, No Rear Drive, Ext. Lg. Keyway	
	M	F/G					
	P	F	2	**	033-92843-0	Shaft, Keyed SAE-F, Mech Shaft Seal, No Rear Drive	
	M	F/G					
	M	M/N	3	**	033-92729-0	Shaft, Spline SAE-F, No Neck, Mech Shaft Seal, With Rear Drive	
	M	M/N	7	**	*033-94178-0	Shaft, Keyed SAE-F, Double Lip Seal, With Rear Drive	
M	M/N	8	**	*033-94179-0	Shaft, Spline SAE-F, No Neck, Double Lip Seal, With Rear Drive		
M	M/N	9	**	033-93615-0	Shaft, Keyed SAE-F, Double Lip Seal, With Rear Drive, Ext. Lg. Keyway		
M	M/N	10	**	033-93616-0	Shaft, Keyed SAE-F, Mech Shaft Seal, With Rear Drive, Ext. Lg. Keyway		
a1-1	P/M	F/G	7/8/9	1	671-00133-0	O RING	3
				4	674-00133-0		
				5	675-00133-0		
a1-2	P/M	F/G/M/N	7/8/9	**	033-94117-0	SLEEVE SHAFT	1
A2	P/M	F/G/M/N	2/3/9/10	**	033-71712-0	RETAINING RING	2
	P/M	F/G/M/N	7/8/9	**	NOT USED		1
A3	P/M	F/G/M/N	2/3/7/8/9/10	**	230-82213-0	SHAFT BEARING	1
A4	P/M	F/G/M/N	2/7	**	033-71910-0	KEY	1
			9/10	**	033-93619-0		
A5	P/M	F/G/M/N	2/3/10	4	623-00015-4	SHAFT SEAL	1
				5	623-00015-4		
A6	P/M	F/G/M/N	2/3/10	1	671-00246-0	O RING	1
				4	674-00246-0		
				5	675-00246-0		
			7/8/9	1	671-00246-0	O RING	2
				4	674-00246-0		
				5	675-00246-0		

Continued on next page.



Section View - A - Input Shaft & Retainer Assembly

Section A P/M24-30 Input Shaft and Retainer Assembly							
Balloon #	Pump/Motor	Type	Shaft Code	Seal Code	Item #	Description	Qty
A7	P/M	F/G/M/N	2/3/10	**	033-57472-0	MECH SEAL RETAINER	1
			7/8/9	**	033-95951-0	DOUBLE LIP RETAINER	
a7-1	P/M	F/G/M/N	7/8/9	**	620-82126-0	SEAL SHAFT LIP BI-DIRECTIONAL	4
a7-2	P/M	F/G/M/N	7/8/9	1	671-00149-0	O RING	2
				4	674-00149-0		
				5	675-00149-0		
a7-3	P/M	F/G/M/N	7/8/9	**	356-65160-0	RETAINING RING	1
A8	P/M	F/G	2/3/7/8/9/10	**	306-40123-0	SCREW HHC 3/8-16UNC x 1 ¼ IG	4
A9	P/M	F/G/M/N	7/8/9	**	325-08160-0	ROLL PIN	1

**Note:** Shaft part numbers marked \* are not usable without assembled with items a1-1 & a1-2 (o rings & sleeve) using special tools P/N 213-0-004202. See page 12 for details

Seal Kits Contain All Seals for the Following:					
NOTE: Seal kits for "M" mod pumps and for aux. pumps require part verification with HPD factory representatives. Standard Seal Kits below contain seals for the Following:					
1. Main Pump/Motor – With or Without Shuttle Valve					
4. Shaft Seal					
Displacement	Type	Shaft Code	Seal Code	Part Number	Qty
24/30	F/G/M/N	2/3/10	1	S23-15128-0	1
			4	S23-15128-4	
			5	S23-15128-5	
24/30	F/G/M/N	7/8/9	1	S23-19653-0	1
			4	S23-19653-4	
			5	S23-19653-5	

24/30 Seal Retainer Assembly Kits Composed of Items: A6, A7, A7-1, A7-2, A7-3 and A9					
Shaft Code	Type	Rotation	Seal Code	Part Number	Qty
7/8/9	F/G/M/N	Bi-Directional	1	S23-19757-0	1
			5	S23-19757-5	

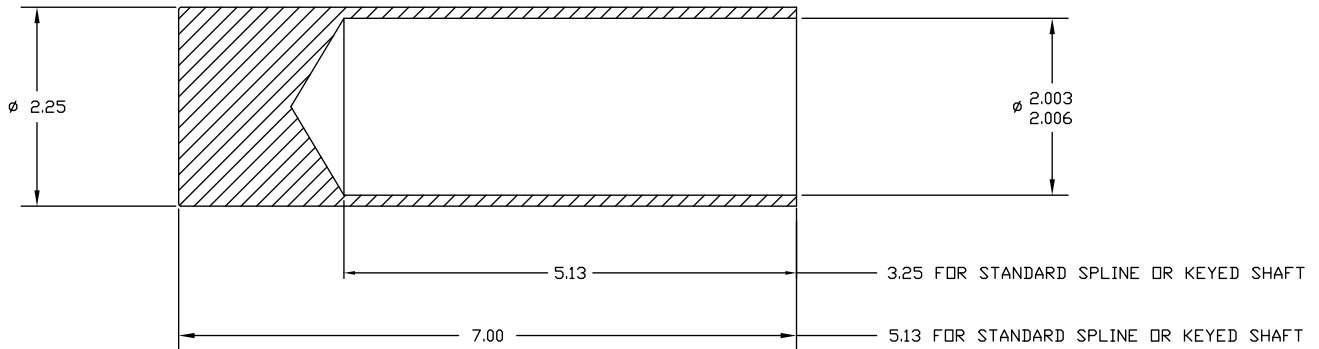
24/30 Shaft Sleeve and Seal Kit for Shaft Codes 7/8/9 Bi-Directional Composed of Items: a1-1, a1-2, A6, a7-1 and a7-2					
Shaft Code	Type	Rotation	Seal Code	Part Number	Qty
7/8/9	F/G/M/N	Bi-Directional	1	S23-19654-0	1
			4	S23-19654-4	
			5	S23-19654-5	



P/M24/30 Shaft and Bearing Assembly Kits Composed of Items: A1, a1-1, a1-2, A2, A3 and A4 as applicable					
Pump/Motor	Type	Shaft Code	Seal Code	Part Number	Qty
P/M	F/G	2	**	S23-12475-0	1
P/M	F/G	3	**	S23-12474-0	1
P/M	F/G	7	1	S23-18233-0	1
			4	S23-18233-4	
			5	S23-18233-5	
P/M	F/G	8	1	S23-18234-0	1
			4	S23-18234-4	
			5	S23-18234-5	
P/M	F/G	9	1	S23-18235-0	1
			4	S23-18235-4	
			5	S23-18235-5	
P/M	F/G	10	**	S23-17491-0	1
M	M/N	2	**	S23-16362-0	1
M	M/N	3	**	S23-16364-0	1
M	M/N	7	1	S23-18236-0	1
			4	S23-18236-4	
			5	S23-18236-5	
M	M/N	8	1	S23-18237-0	1
			4	S23-18237-4	
			5	S23-18237-5	
M	M/N	9	**	S23-17496-0	1
M	M/N	10	**	S23-17167-0	1

**Note:** Replacement shaft sleeves & o rings are available for Type F/G/M/N with 7/8/9 shafts. However, special tool P/N 213-0-004202 is required to remove and install the sleeve.  
See page 12 for tool details.

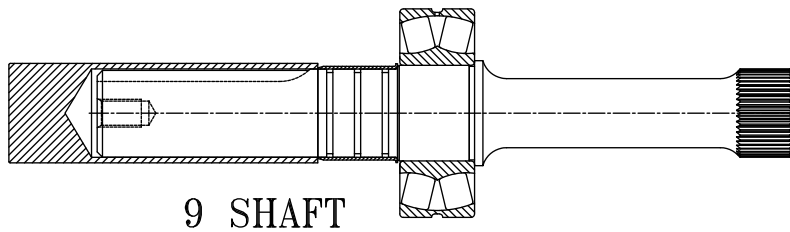
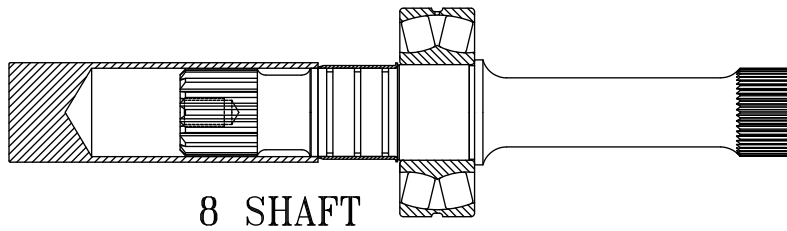
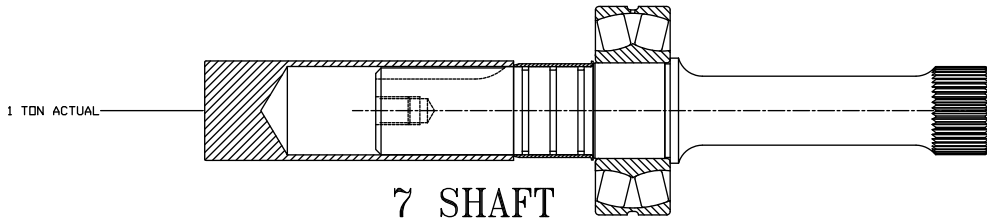
213-0-004202



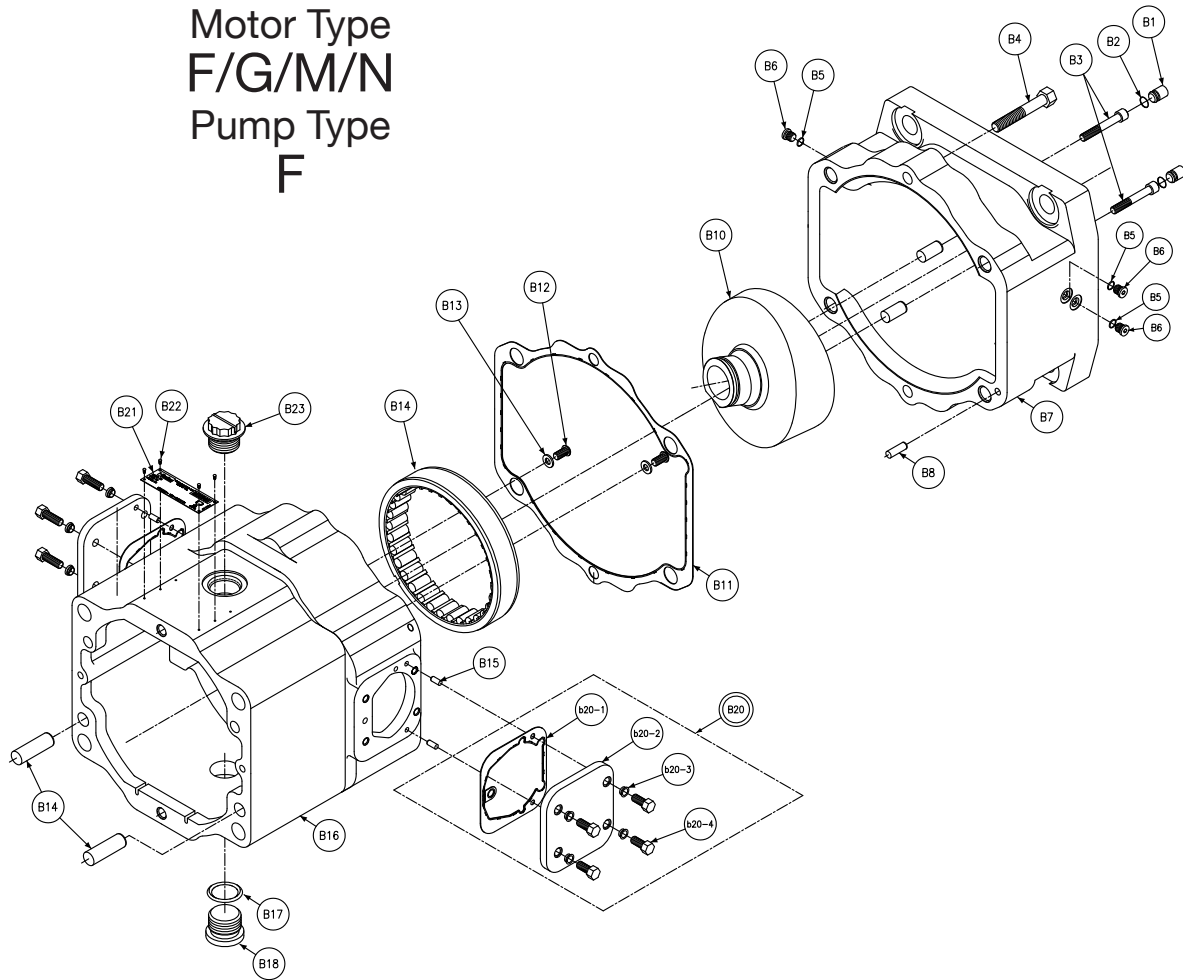
2X SCALE

**INSTLLATION**

DO NOT HAMMER OR OTHERWISE IMPACT  
APPLY A CONSTANT PRESSING FORCE ONLY



Motor Type  
F/G/M/N  
Pump Type  
F



## Section View - B - Housing and Barrel Bearing Assembly

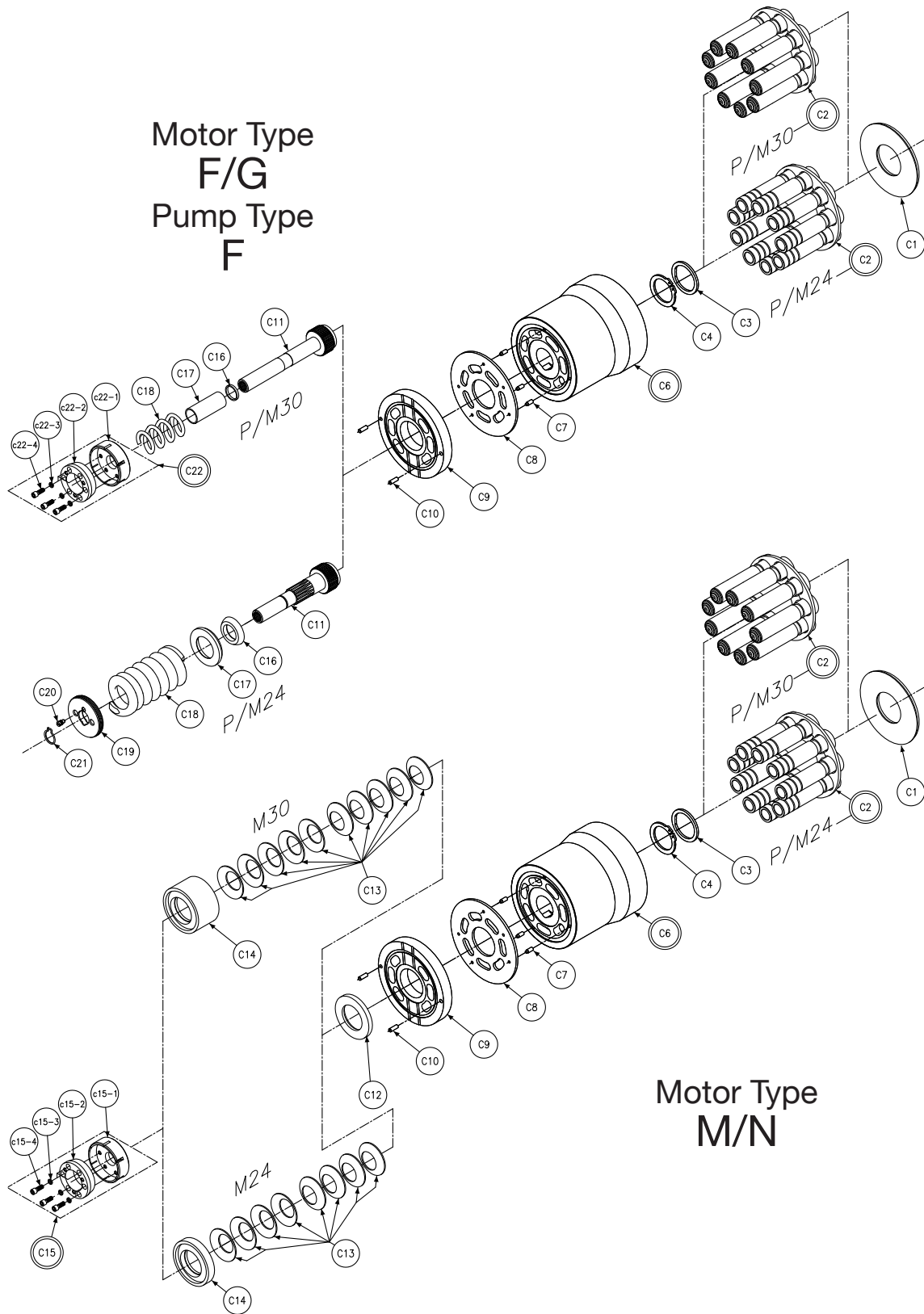
Balloon #	Pump/Motor	Displacement	Type	Seal Code	Item #	Description	Qty
B1	P/M	24/30	F/G/M/N	**	033-57475-0	PLUG	2
B2	P/M	24/30	F/G/M/N	1	671-00111-0	O RING	2
				4	674-00111-0		
				5	675-00111-0		
B3	P/M	24/30	F/G/M/N	**	358-16260-0	SHCS 3/8-16UNC x 2 1/4	2
B4	P/M	24/30	F/G/M/N	**	306-40009-0	SHCS 5/8-11UNC x 3	2
B5	P/M	24/30	F/G/M/N	1	691-00904-0	O RING	3
				4	694-00904-0		
				5	695-00904-0		
B6	P/M	24/30	F/G/M/N	**	488-35001-0	PLUG	3
B7	P/M	24/30	F/G/M/N	**	033-91137-0	MOUNTING FLANGE	1
B8	P/M	24/30	F/G/M/N	**	324-22416-0	DOWEL PIN 3/8 x 1	1
B9	P/M	24/30	F/G/M/N	**	324-24028-0	DOWEL PIN 5/8 x 1 3/4	1
B10	P/M	24	F/G/M/N	**	033-91148-0	Cam 19° (24.6 CIPR)	1
			F/G/M/N	**	033-91556-0	Cam 17° (22.0 CIPR)	
			F/G/M/N	**	033-94004-0	Cam 15° (19.3 CIPR)	
		30	F/G/M/N	**	033-91148-0	Cam 19° (30.6 CIPR)	
			F/G/M/N	**	033-91556-0	Cam 17° (27.2 CIPR)	
			F/G/M/N	**	033-94004-0	Cam 15° (24.1 CIPR)	
B11	P/M	24/30	F/G/M/N	**	033-91082-0	GASKET MTG. FLG.	1
B12	P/M	24/30	F/G/M/N	**	353-25088-0	BHCS 5/16-18 UNC x 5/8	2
B13	P/M	24/30	F/G/M/N	**	345-10020-0	WASHER 11/32	2
B14	P/M	24/30	F/G/M/N	**	033-93046-0	BARREL BEARING	1
B15	P/M	24/30	F/G/M/N	**	324-21608-0	PIN 1/4 x 1/2	4
B16	P/M	24	F/G/M/N	**	033-57150-0	HOUSING	1
		30	F/G/M/N	**	033-57925-0		
B17	P/M	24/30	F/G/M/N	1	691-00920-0	O RING	1
				4	694-00920-0		
				5	695-00920-0		
B18	P/M	24/30	F/G/M/N	**	488-35019-0	PLUG	1
B19	P/M	24/30	F/G/M/N	**	324-24832-0	DOWEL PIN 3/4 x 2.00	2
B20	P/M	24/30	F/G/M/N	**	S23-12133-0	BLANKING COVER ASSY	2
b20-1	P/M	24/30	F/G/M/N	**	033-91058-0	GASKET BLANKING PLATE	1
b20-2	P/M	24/30	F/G/M/N	**	033-53252-0	BLANKING PLATE	1

Continued on next page.

## Section View - B - Housing and Barrel Bearing Assembly

Balloon #	Pump/Motor	Displacement	Type	Seal Code	Item #	Description	Qty
b20-3	P/M	24/30	F/G/M/N	**	631-45007-0	WASHER NYLTITE	4
b20-4	P/M	24/30	F/G/M/N	**	353-25039-0	HWHDS 3/8-16UNC x 1	4
B21	P/M	24/30	F/G/M/N	**	033-71908-0	NAMEPLATE	1
B22	P/M	24/30	F/G/M/N	**	320-10203-0	DRIVE SCREW	4
B23	P/M	24/30	F/G/M/N	**	449-00019-0	SHIPPING PLUG	1

Housing Assembly The Following Kits Contain Items B12, B13, B14, B15, B16, B17 and B18						
Shaft Code	Pump/Motor	Displacement	Type	Part Number	Qty	
2/3/7/8/9/10	P/M	24	F/G/M/N	S23-12566-0	1	
2/3/7/8/9/10	P/M	30	F/G/M/N	S23-12175-0	1	



Section View - C - Rotating Group Assembly

Balloon #	Pump/Motor	Type	Displacement	Efficiency	Rotation	Item #	Description	Qty
C1	P/M	F/G/M/N	**	**	**	033-91653-0	CREEP PLATE	1
C2	P/M	F/G/M/N	24.6 IN <sup>3</sup> /REV (403CC/REV)	**	**	S13-44470-0	PISTON SHOE & RETAINER ASSEMBLY	1
	P/M	F/G/M/N	24.6 IN <sup>3</sup> /REV (403CC/REV)	H	**	S23-17399-0		
	P/M	F/G/M/N	30.6 IN <sup>3</sup> /REV (501CC/REV)	**	**	S23-12684-0		
C3	P/M	F/G/M/N	**	**	**	033-59805-0	THRUST WASHER	1
C4	P/M	F/G/M/N	**	**	**	033-92754-0	RET RING - .078/.077 THK BLACK	SELECT FIT ONE ONLY
	P/M	F/G/M/N	**	**	**	033-59746-0	RET RING - .079/.081 THK BLUE	
	P/M	F/G/M/N	**	**	**	033-71717-0	RET RING - .081/.083 THK RED	
	P/M	F/G/M/N	**	**	**	033-91130-0	RET RING - .083/.085 THK. WHITE	
	P/M	F/G/M/N	**	**	**	035-71717-0	RET RING - .085/.087 THK GREEN	
	P/M	F/G/M/N	**	**	**	035-71716-0	RET RING - .087/.089 THK YELLOW	
C6	P/M	F/G/M/N	24	**	**	S23-12091-0	CYLINDER BARREL	1
	P/M	F/G/M/N	30	**	**	S23-12170-0		
C7	P/M	F/G/M/N	**	**	**	033-59747-0	FACE PLATE PIN	3
C8	P/M	F/G/M/N	24	**	**	033-71748-0	FACE PLATE	1
	P/M	F/G/M/N	30	**	**	033-57571-0		
C9	P	F	24	**	CW	033-71752-0	PORT PLATE	1
	P	F	24	**	CCW	033-71753-0		
	P	F	30	**	CW	033-91238-0		
	P	F	30	**	CCW	033-91237-0		
	M	F/G/M/N	24	**	N	033-71751-0		
	M	F/G/M/N	30	**	N	033-91149-0		
C10	P/M	F/G/M/N	**	**	**	324-21610-0	DOWEL PIN	2
C11	P/M	F/G	24	**	**	033-93535-0	AUXILIARY HOLDDOWN SHAFT	1
	P/M	F/G	30	**	**	033-93536-0		
C12	M	M/N	**	**	**	033-92790-0	WASHER DISC SPRING BACKUP	1
C13	M	M/N	24	**	**	033-92725-0	DISC SPRING BARREL HOLDDOWN	8
	M	M/N	30	**	**	033-92725-0		10

Continued on next page.



## Section View - C - Rotating Group Assembly

Balloon #	Pump/Motor	Type	Displacement	Efficiency	Rotation	Item #	Description	Qty
C14	M	M/N	24	**	**	033-92916-0	RETAINER BBL HD DISC SPG	1
	M	M/N	30	**	**	033-92788-0		
C15	P/M	M/N	**	**	**	SEE KIT P/N BELOW	BARREL HOLDDOWN NUT	1
c15-1	P/M	F/G/M/N	**	**	**	033-94648-0	NUT BARREL HLDOWN	1
c15-2	P/M	F/G/M/N	**	**	**	033-94649-0	INSERT BARREL HOLDDOWN	1
c15-3	P/M	F/G/M/N	**	**	**	358-12100-0	SCREW, SHC 1/4-20 UNC X	6
c15-4	P/M	F/G/M/N	**	**	**	346-60036-0	LOCKWASHER 1/4 HI COLLAR	6
C16	P/M	F/G	24	**	**	033-57147-0	SPHERICAL SEAT	1
	P/M	F/G	30	**	**	350-10171-0	WASHER	1
C17	P/M	F/G	24	**	**	033-57138-0	SPRING RETAINER	1
	P/M	F/G	30	**	**	033-95942-0	BARREL STOP	1
C18	P/M	F/G	24	**	**	033-57136-0	SPRING, BARREL HOLDDOWN	1
	P/M	F/G	30	**	**	033-95941-0		
C19	P/M	F/G	24	**	**	033-57139-0	HOLDDOWN ADJ SCREW	1
C20	P/M	F/G	24	**	**	033-57241-0	HOLDDOWN ADJ SCREW LOCK	1
C21	P/M	F/G	24	**	**	033-57239-0	LOCK RING	1
C22	P/M	F/G	30	**	**	S23-19788-0	BARREL HOLDDOWN NUT	1
c22-1	P/M	F/G/M/N	**	**	**	033-95972-0	NUT BARREL HLDOWN	1
c22-2	P/M	F/G/M/N	**	**	**	033-94649-0	INSERT BARREL HOLDDOWN	1
c22-3	P/M	F/G/M/N	**	**	**	358-12100-0	SCREW, SHC 1/4-20 UNC X	6
c22-4	P/M	F/G/M/N	**	**	**	346-60036-0	LOCKWASHER 1/4 HI COLLAR	6

Rotating Group Kit "Major" The Following Kits Contain C1, C2, C6, C7, C8, C9, C10 and (Barrel Bearing) Item B14					
Shaft Code	Pump/Motor	Type	Displacement	Rotation	Part Number
2/3/7/8/9/10	M	F/G/M/N	24.6 IN <sup>3</sup> /REV (403CC/REV)	N	S23-17115-0
2/3/7/8/9/10	M	F/G/M/N	30.6 IN <sup>3</sup> /REV (501CC/REV)	N	S23-17116-0
2/3/7/8/9/10	P	F	24.6 IN <sup>3</sup> /REV (403CC/REV)	CW	S23-17111-0
				CCW	S23-17112-0
2/3/7/8/9/10	P	F	24.6 IN <sup>3</sup> /REV (403CC/REV)	CW	S23-17113-0
				CCW	S23-17114-0

Rotating Group Kit "Minor" The Following Kits Contain C1, C2, C8 and C9					
Shaft Code	Pump/Motor	Type	Displacement	Rotation	Part Number
2/3/7/8/9/10	M	F/G/M/N	24.6 IN <sup>3</sup> /REV (403CC/REV)	N	S23-17433-0
2/3/7/8/9/10	M	F/G/M/N	30.6 IN <sup>3</sup> /REV (501CC/REV)	N	S23-17434-0
2/3/7/8/9/10	P	F	24.6 IN <sup>3</sup> /REV (403CC/REV)	CW	S23-17429-0
				CCW	S23-17430-0
2/3/7/8/9/10	P	F	24.6 IN <sup>3</sup> /REV (403CC/REV)	CW	S23-17431-0
				CCW	S23-17432-0

Retaining Ring Kit for Piston Shoe Holddown This Service Kit Contains one each of all part numbers in C6 below However Individual Multiple Piece kits, (5 piece kits) are also available. See Below						
Shaft Code	Pump/Motor	Type	Displacement	Seal Code	Rotation	Part Number
2/3/7/8/9/10	P/M	F/G/M/N	24/30	**	**	S23-12629-0

Retaining Ring Kit for Piston Shoe Holddown Individual Shoe Holddown Multiple Pack kits, (5 piece kits)						
Shaft Code	Pump/Motor	Type	Displacement	Qty	Rotation	Part Number
2/3/7/8/9/10	P/M	F/G/M/N	24/30	5 Pieces	**	033-92754-0K
2/3/7/8/9/10	P/M	F/G/M/N	24/30	5 Pieces	**	033-59746-0K
2/3/7/8/9/10	P/M	F/G/M/N	24/30	5 Pieces	**	033-71718-0K
2/3/7/8/9/10	P/M	F/G/M/N	24/30	5 Pieces	**	033-91130-0K
2/3/7/8/9/10	P/M	F/G/M/N	24/30	5 Pieces	**	033-71717-0K
2/3/7/8/9/10	P/M	F/G/M/N	24/30	5 Pieces	**	033-71716-0K

Holddown Nut Assembly This Service Kit Contains Items c15-1, c15-2, c15-3, & c15-4 used on M24/30 M/N					
Shaft Code	Pump/Motor	Type	Displacement	Qty	Part Number
2/3/7/8/9/10	M	M/N	24/30	1	S23-17350-0
2/3/7/8/9/10	M	M/N	24/30	1	S23-17350-0

Holddown Nut Assembly This Service Kit Contains Items c22-1, c22-2, c22-3, & c22-4 used on P/M30 F/G					
Shaft Code	Pump/Motor	Type	Displacement	Qty	Part Number
2/3/7/8/9/10	P/M	F/G	30	1	S23-19788-0

Motor Type  
F/G  
Pump Type  
F

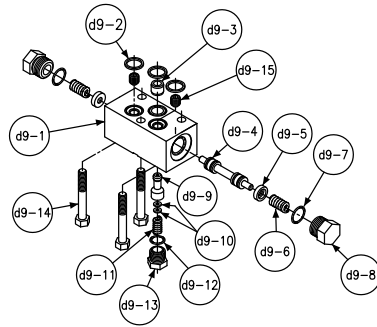
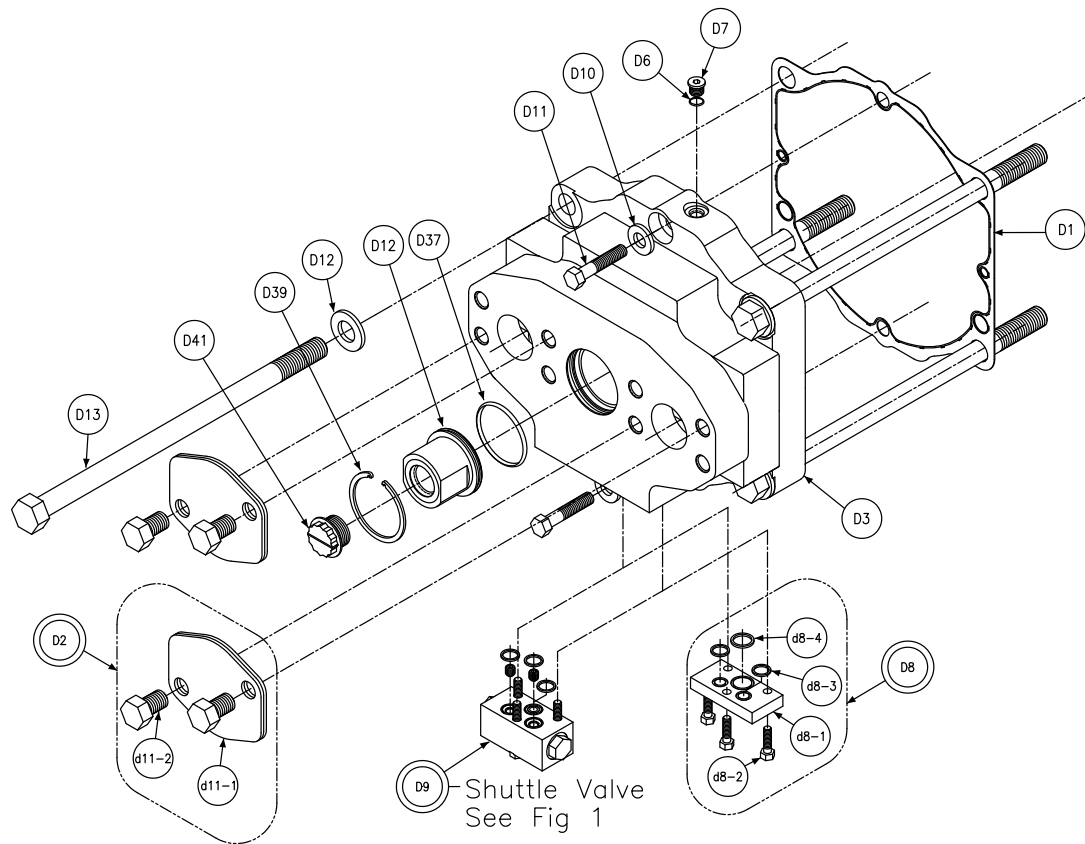


Fig 1  
Shuttle Valve (Item D9)



Section View - D - Pump/Motor Type F & G Port Block Assembly

Balloon #	Pump/Motor	Displacement	Type	Shuttle Valve Features	Seal Code	Item #	Description	Qty
D1	P/M	**	F/G	**	**	033-91085-0	GASKET PORT BLOCK	1
D2	P/M	**	F/G	**	**	S13-45080-0	SHIPPING COVER SYS. PORT ASSY	2
d2-1	P/M	**	F/G	**	**	034-71883-0	SHIPPING COVER SYS. PORT	2
d2-2	P/M	**	F/G	**	**	306-26160-0	HHCS 3/4-10 UNC x 1	4
D3	P/M	**	F/G	**	**	033-57898-0	PORT BLOCK WITH SHUTTLE PAD	2
D6	P/M	**	F/G	**	1	691-00906-0	O RING	1
				**	4	694-00906-0		
				**	5	675-00906-0		
D7	P/M	**	F/G	**	**	488-35014-0	PLUG	1
D8	P/M	**	F	**	**	S13-00181-0	SHUTTLE PAD BLANKING PLATE ASSY	1
d8-1	P/M	**	F	**	**	033-71649-0	BLANKING PLATE	1
d8-2	P/M	**	F	**	**	306-40071-0	HHCS 5/16-18 UNC x 1	2
d8-3	P/M	**	F	**	1	691-10014-0	SQUARE GASKET	2
				**	4	674-00014-0		
				**	5	695-10014-0		
d8-4	P/M	**	F	**	1	691-10019-0	SQUARE GASKET	1
				**	4	674-00019-0		
				**	5	695-10019-0		
D9	M	**	G	00	**	S13-48273-0	HOT OIL SHUTTLE	1
	M	**	G	02	**	S13-48776-0	HOT OIL SHUTTLE WITH .078 ORIFICES	
d9-1	M	**	G	00/02	**	033-53117-0	SHUTTLE BODY	1
d9-2	M	**	G	00/02	1	691-10016-0	O RING	3
	M	**	G	00/02	4	674-10016-0		
	M	**	G	00/02	5	695-20016-0		
d9-3	M	**	G	00/02	**	033-53154-0	SEAT	1
d9-4	M	**	G	00/02	**	033-70529-0	SPOOL	1
d9-5	M	**	G	00/02	**	033-70495-0	WASHER	2
d9-6	M	**	G	00/02	**	033-70515-0	SPRING	2
d9-7	M	**	G	00/02	1	691-00908-0	O RING	2
	M	**	G	00/02	4	674-00908-0		
	M	**	G	00/02	5	695-00908-0		

Continued on next page.



## Section View - D - Pump/Motor Type F &amp; G Port Block Assembly

Balloon #	Pump/Motor	Displacement	Type	Shuttle Valve Features	Seal Code	Item #	Description	Qty
d9-8	M	**	G	00/02	**	033-93510-0	PLUG	2
d9-9	M	**	G	00/02	**	033-71925-0	SPOOL	1
d9-10	M	**	G	00/02	**	345-20004-0	SHIM WASHER	2
d9-11	M	**	G	00/02	**	033-71923-0	SPRING	1
d9-12	M	**	G	00/02	**	691-00906-0	O RING	1
	M	**	G	00/02	“	674-00906-0		
	M	**	G	00/02	**	695-00906-0		
d9-13	M	**	G	00/02	**	033-72129-0	PLUG	1
d9-14	M	**	G	00/02	**	306-40106-0	HHCS 5/16-18 UNC x 2	3
d9-15	M	**	G	02	**	033-53523-0	ORIFICE .078	2
D10	P/M	**	F/G	**	**	350-10136-0	WASHER PLAIN .66 x 1.31 x .16	2
D11	P/M	**	F/G	**	**	306-40022-0	HHCS 5/8-11 UNC x 2 1/2	2
D12	P/M	**	F/G	**	**	350-10135-0	WASHER PLAIN .94 x 1.75 x .16	4
D13	P/M	24	F/G	**	**	306-40221-0	HHCS 7/8-9UNC x 13	4
	P/M	30	F/G	**	**	306-40230-0	HHCS 7/8-9UNC x 14	4
D37	P/M	**	F/G	**	1	671-00147-0	O RING	1
					4	674-00147-0		
					5	675-00147-0		
D38	P/M	**	F/G	**	**	033-72100-0	END COVER	1
D39	P/M	**	F/G	**	**	356-65082-0	RETAINING RING	1
D41	P/M	**	F/G	**	**	449-00019-0	SHIPPING PLUG	1

Section View - D - Pump/Motor Type M & N Port Block Assembly

Motor Type  
M/N  
Pump Type  
M

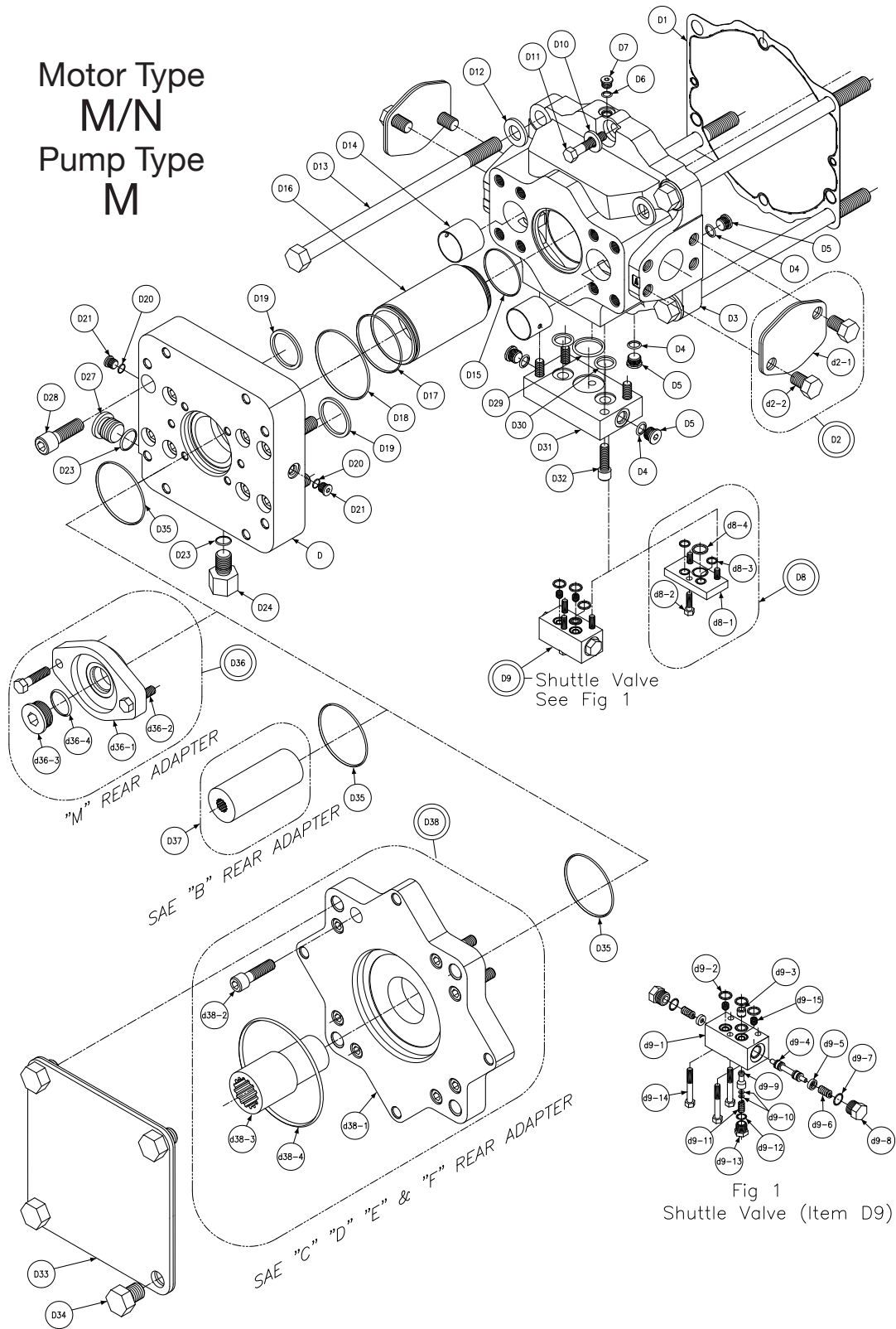


Fig 1  
Shuttle Valve (Item D9)

Section View - D - Pump/Motor Type - M & N - Port Block Assembly

Balloon #	Pump/Motor	Type	Ext Dr	Shuttle Valve Features	Seal Code	Item #	Description	Qty
D1	P/M	**	**	**	**	033-91085-0	GASKET PORT BLOCK	1
D2	P/M	**	**	**	**	S13-45080-0	SHIPPING COVER SYS. PORT ASSY	2
d2-1	P/M	**	**	**	**	034-71883-0	SHIPPING COVER SYS. PORT	2
d2-2	P/M	**	**	**	**	306-26160-0	HHCS 3/4-10 UNC x 1	4
D3	P/M	**	**	**	**	033-93312-0	PORT BLOCK WITH SHUTTLE PAD	2
D4	P/M	**	**	**	1	691-00908-0	O RING	6
					4	694-00908-0		
					5	695-00908-0		
D5	P/M	**	**	**	**	488-35018-0	PLUG	6
D6	P/M	**	**	**	1	691-00906-0	O RING	1
					4	694-00906-0		
					5	695-00906-0		
D7	P/M	**	**	**	**	488-35014-0	PLUG	1
D8	P/M	**	**	**	1	S13-00181-0	SHUTTLE PAD BLANKING PLATE ASSY	1
					4	S13-00181-4		
					5	S13-00181-5		
d8-1	P/M	**	**	**	**	033-71649-0	BLANKING PLATE	1
d8-2	P/M	**	**	**	**	306-40071-0	HHCS 5/16-18 UNC x 1	2
d8-3	P/M	**	**	**	1	691-10014-0	SQUARE GASKET	2
					4	674-00014-0		
					5	695-10014-0		
d8-4	P/M	**	**	**	1	691-10019-0	SQUARE GASKET	1
					4	674-00019-0		
					5	695-10019-0		
D9	M	N	**	00	1	S13-48273-0	HOT OIL SHUTTLE	1
					4	S13-48273-4		
					5	S13-48273-5		
	M	N	**	02	1	S13-48776-0	HOT OIL SHUTTLE WITH .078 ORIFICES	
					4	S13-48776-4		
					5	S13-48776-5		
d9-1	M	N	**	00/02	**	033-53117-0	SHUTTLE BODY	1
d9-2	M	N	**	00/02	1	691-10016-0	O RING	3
					4	674-10016-0		
					5	695-20016-0		
d9-3	M	N	**	00/02	**	033-53154-0	SEAT	1

Continued on next page.



Balloon #	Pump/Motor	Type	Ext Dr	Shuttle Valve Features	Seal Code	Item #	Description	Qty
d9-4	M	N	**	00/02	**	033-70529-0	SPOOL	1
d9-5	M	N	**	00/02	**	033-70495-0	WASHER	2
d9-6	M	N	**	00/02	**	033-70515-0	SPRING	2
d9-7	M	N	**	00/02	1	691-00908-0	O RING	2
					4	674-00908-0		
					5	695-00908-0		
d9-8	M	N	**	00/02	**	033-93510-0	PLUG	2
d9-9	M	N	**	00/02	**	033-71925-0	SPOOL	1
d9-10	M	N	**	00/02	**	345-20004-0	SHIM WASHER	2
d9-11	M	N	**	00/02	**	033-71923-0	SPRING	1
d9-12	M	N	**	00/02	1	691-00906-0	O RING	1
					4	674-00906-0		
					5	695-00906-0		
d9-13	M	N	**	00/02	**	033-72129-0	PLUG	1
d9-14	M	N	**	00/02	**	306-40106-0	HHCS 5/16-18 UNC x 2	3
d9-15	M	N	**	02	**	033-53523-0	ORIFICE .078	2
D10	P/M	M/N	**	**	**	350-10136-0	WASHER 66 x 1.31 x .16	2
D11	P/M	M/N	**	**	**	306-40008-0	HHCS 5/8-11 UNC x 2 1/4	2
D12	P/M	M/N	**	**	**	350-10135-0	WASHER .94 x 1.75 x .16	4
D13	P/M	M/N	**	**	**	306-40221-0	HHCS 7/8-9UNC x 13	4
	P/M	M/N	**	**	**	306-40230-0	HHCS 7/8-9UNC x 14	4
D14	P/M	M/N	**	**	**	033-93313-0	SOLID SLEEVE	2
D15	P/M	M/N	**	**	1	671-00233-0	O RING	1
					4	674-00233-0		
					5	675-00233-0		
D16	P/M	M/N	**	**	**	033-92816-0	SLEEVE REPLEN ISOLATION	1
D17	P/M	M/N	**	**	1	671-00238-0	O RING	1
					4	674-00238-0		
					5	675-00238-0		
D18	P/M	M/N	**	**	1	671-00242-0	O RING	1
					4	674-00242-0		
					5	675-00242-0		
D19	P/M	M/N	**	**	1	691-10228-0	O RING	2
					4	694-10228-0		
					5	695-10228-0		

Continued on next page.



Section View - D - Pump/Motor Type - M & N - Port Block Assembly

Balloon #	Pump/Motor	Type	Ext Dr	Shuttle Valve Features	Seal Code	Item #	Description	Qty
D20	P/M	M/N	**	**	1	691-00906-0	O RING	2
					4	694-00906-0		
					5	695-00906-0		
D21	P/M	M/N	**	**	**	488-35041-0	PLUG	2
D22	P/M	M/N	**	**	**	033-92814-0	COVER REAR DRIVE	1
D23	P/M	M/N	**	**	1	691-00916-0	O RING	2
					4	694-00916-0		
					5	695-00916-0		
D24	P/M	M/N	**	**	**	033-93464-0	SUPPORT PLUG	1
D26	P/M	M/N	**	**	1	671-00122-0	O RING	1
					4	674-00122-0		
					5	675-00122-0		
D27	P/M	M/N	**	**	**	488-35024-0	PLUG	1
D28	P/M	M/N	**	**	**	358-26280-0	SHCS 3/4-10 UNC X 2 1/2	8
D29	P/M	M/N	**	**	1	691-00223-0	O RING	1
					4	694-00223-0		
					5	695-00223-0		
D30	P/M	M/N	**	**	1	691-00214-0	O RING	2
					4	694-00214-0		
					5	695-00214-0		
D31	P/M	M/N	**	**	**	033-93830-0	SHUTTLE ADPT LG TO SM	1
D32	P/M	M/N	**	**	**	358-20220-0	SHCS 1/2-13 UNC X 1 3/4	4
D33	P/M	M/N	B	**	**	034-59556-0	SHIPPING COVER SAE-B	1
			C	**	**	031-57252-0	SHIPPING COVER SAE-C	
			D	**	**	031-57250-0	SHIPPING COVER SAE-D	
			E	**	** **	032-91405-0	SHIPPING COVER SAE-E	
			F	**	**	033-93079-0	SHIPPING COVER SAE-F	
D34	P/M	M/N	B	**	**	306-20120-0	HHCS 3/8-16 UNC x 3/4	2
			C	**	**	306-24160-0	HHCS 1/2-13 UNC x 3/4	4
			D	**	**	306-26160-0	HHCS 5/8-11 UNC x 1	4
			E	**	**	306-26160-0	HHCS 3/4-10 UNC x 1	2
			F	**	**	306-30160-0	HHCS 3/4-10 UNC x 1	4
D35	P/M	M/N	M/B/C/ D/E/F	**	1	671-00155-0	O RING	1
					4	674-00155-0		
					5	675-00155-0		



## Section View - D - Pump/Motor Type - M &amp; N - Port Block Assembly

M OPERATING COVER						
Balloon #	Displacement	Type	Seal Code	Item #	Description	Qty
D36	**	M/N	1	S23-19371-0	OPERATING COVER SAE-B 2-BOLT ASSY	1
			4	S23-19371-4		
			5	S23-19371-5		
d36-1	**	**	**	P2-075-1009-03	COVER	1
d36-2	**	**	**	306-40077-0	SCREW, HHC	2
d36-3	**	**	**	488-35019-0	PLUG	1
d36-4	**	**	1	691-00920-0	O RING	1
			4	694-00920-0		
			5	695-00920-0		

SAE-B ADAPTOR						
Balloon #	Displacement	Type	Seal Code	Item #	Description	Qty
D37	24	M/N	**	033-92834-0	SAE-B COUPLING	1
	30	M/N	**	S23-16369-0		

SAE-C ADAPTOR						
Balloon #	Displacement	Type	Seal Code	Item #	Description	Qty
D38	24	M/N	1	S23-16340-0	KIT REAR ADAPTOR SAE-C	1
			4	S23-16340-4		
			5	S23-16340-5		
	30		1	S23-16351-0		
			4	S23-16351-4		
			5	S23-16351-5		
d38-1	**	M/N	**	033-92827-0	SAE-C ADAPTOR	1
d38-2	**	M/N	**	358-24220-0	SHCS 5/8-11 UNC x 2	8
d38-3	24	M/N	**	033-92835-0	SAE-C COUPLING	1
	30		**	S23-16368-0		
d38-4	**	M/N	1	671-00159-0	O RING	1
			4	674-00159-0		
			5	675-00159-0		

## Section View - D - Pump/Motor Type - M &amp; N - Port Block Assembly

SAE-D ADAPTOR						
Balloon #	Displacement	Type	Seal Code	Item #	Description	Qty
D38	24	M/N	1	S23-16341-0	KIT REAR ADAPTOR SAE-D	1
			4	S23-16341-4		
			5	S23-16341-5		
	30		1	S23-16352-0		
			4	S23-16352-4		
			5	S23-16352-5		
d38-1	**	M/N	**	033-92828-0	SAE-D ADAPTOR	1
d38-2	**	M/N	**	358-24220-0	SHCS 5/8-11 UNC x 2	8
d38-3	24	M/N	**	033-92836-0	SAE-D COUPLING	1
	30		**	S23-16367-0		
d38-4	**	M/N	1	671-00163-0	O RING	1
			4	674-00163-0		
			5	675-00163-0		

SAE-E ADAPTOR						
Balloon #	Displacement	Type	Seal Code	Item #	Description	Qty
D38	24	M/N	1	S23-16342-0	KIT REAR ADAPTOR SAE-E	1
			4	S23-16342-4		
			5	S23-16342-5		
	30		1	S23-16353-0		
			4	S23-16353-4		
			5	S23-16353-5		
d38-1	**	M/N	**	033-92823-0	SAE-E ADAPTOR	1
d38-2	**	M/N	**	358-24240-0	SHCS 5/8-11 UNC x 2	8
d38-3	24	M/N	**	033-92836-0	SAE-E COUPLING	1
	30		**	S23-16367-0		
d38-4	**	M/N	1	671-00165-0	O RING	1
			4	674-00165-0		
			5	675-00165-0		

## Section View - D - Pump/Motor Type - M &amp; N - Port Block Assembly

SAE-F ADAPTOR						
Balloon #	Displacement	Type	Seal Code	Item #	Description	Qty
D38	24	M/N	1	S23-16343-0	KIT REAR ADAPTOR SAE-F	1
			4	S23-16343-4		
			5	S23-16343-5		
	30		1	S23-16354-0		
			4	S23-16354-4		
			5	S23-16354-5		
d38-1	**	M/N	**	033-92824-0	SAE-F ADAPTOR	1
d38-2	**	M/N	**	358-24220-0	SHCS 5/8-11 UNC x 2	8
d38-3	24	M/N	**	033-92778-0	SAE-F COUPLING	1
	30		**	S23-16366-0		
d38-4	**	M/N	1	671-00262-0	O RING	1
			4	674-00262-0		
			5	675-00262-0		

The items described in this document and other documents and descriptions provided by Parker Hannifin Corporation, Hydraulics Group, and its authorized distributors ("Seller") are hereby offered for sale at prices to be established by Seller. This offer and its acceptance by any customer ("Buyer") shall be governed by all of the following Terms and Conditions. Buyer's order for any item described in its document, when communicated to Seller verbally, or in writing, shall constitute acceptance of this offer. All goods or work described will be referred to as "Products".

1. **Terms and Conditions.** Seller's willingness to offer Products, or accept an order for Products, to or from Buyer is expressly conditioned on Buyer's assent to these Terms and Conditions and to the terms and conditions found on-line at [www.parker.com/saleterms/](http://www.parker.com/saleterms/). Seller objects to any contrary or additional term or condition of Buyer's order or any other document issued by Buyer.
2. **Price Adjustments; Payments.** Prices stated on the reverse side or preceding pages of this document are valid for 30 days. After 30 days, Seller may change prices to reflect any increase in its costs resulting from state, federal or local legislation, price increases from its suppliers, or any change in the rate, charge, or classification of any carrier. The prices stated on the reverse or preceding pages of this document do not include any sales, use, or other taxes unless so stated specifically. Unless otherwise specified by Seller, all prices are F.O.B. Seller's facility, and payment is due 30 days from the date of invoice. After 30 days, Buyer shall pay interest on any unpaid invoices at the rate of 1.5% per month or the maximum allowable rate under applicable law.
3. **Delivery Dates; Title and Risk; Shipment.** All delivery dates are approximate and Seller shall not be responsible for any damages resulting from any delay. Regardless of the manner of shipment, title to any products and risk of loss or damage shall pass to Buyer upon tender to the carrier at Seller's facility (i.e., when it's on the truck, it's yours). Unless otherwise stated, Seller may exercise its judgment in choosing the carrier and means of delivery. No deferment of shipment at Buyers' request beyond the respective dates indicated will be made except on terms that will indemnify, defend and hold Seller harmless against all loss and additional expense. Buyer shall be responsible for any additional shipping charges incurred by Seller due to Buyer's changes in shipping, product specifications or in accordance with Section 13, herein.
4. **Warranty.** Seller warrants that the Products sold hereunder shall be free from defects in material or workmanship for a period of eighteen months from the date of delivery to Buyer. The prices charged for Seller's products are based upon the exclusive limited warranty stated above, and upon the following disclaimer: **DISCLAIMER OF WARRANTY: THIS WARRANTY COMPRISES THE SOLE AND ENTIRE WARRANTY PERTAINING TO PRODUCTS PROVIDED HEREUNDER. SELLER DISCLAIMS ALL OTHER WARRANTIES, EXPRESS AND IMPLIED, INCLUDING MERCHANTABILITY AND FITNESS FOR A PARTICULAR PURPOSE.**
5. **Claims; Commencement of Actions.** Buyer shall promptly inspect all Products upon delivery. No claims for shortages will be allowed unless reported to the Seller within 10 days of delivery. No other claims against Seller will be allowed unless asserted in writing within 60 days after delivery or, in the case of an alleged breach of warranty, within 30 days after the date within the warranty period on which the defect is or should have been discovered by Buyer. Any action based upon breach of this agreement or upon any other claim arising out of this sale (other than an action by Seller for any amount due to Seller from Buyer) must be commenced within thirteen months from the date of tender of delivery by Seller or, for a cause of action based upon an alleged breach of warranty, within thirteen months from the date within the warranty period on which the defect is or should have been discovered by Buyer.
6. **LIMITATION OF LIABILITY. UPON NOTIFICATION, SELLER WILL, AT ITS OPTION, REPAIR OR REPLACE A DEFECTIVE PRODUCT, OR REFUND THE PURCHASE PRICE. IN NO EVENT SHALL SELLER BE LIABLE TO BUYER FOR ANY SPECIAL, INDIRECT, INCIDENTAL OR CONSEQUENTIAL DAMAGES ARISING OUT OF, OR AS THE RESULT OF, THE SALE, DELIVERY, NON-DELIVERY, SERVICING, USE OR LOSS OF USE OF THE PRODUCTS OR ANY PART THEREOF, OR FOR ANY CHARGES OR EXPENSES OF ANY NATURE INCURRED WITHOUT SELLER'S WRITTEN CONSENT, EVEN IF SELLER HAS BEEN NEGLIGENT, WHETHER IN CONTRACT, TORT OR OTHER LEGAL THEORY. IN NO EVENT SHALL SELLER'S LIABILITY UNDER ANY CLAIM MADE BY BUYER EXCEED THE PURCHASE PRICE OF THE PRODUCTS.**
7. **Contingencies.** Seller shall not be liable for any default or delay in performance if caused by circumstances beyond the reasonable control of Seller.
8. **User Responsibility.** The user, through its own analysis and testing, is solely responsible for making the final selection of the system and Product and assuring that all performance, endurance, maintenance, safety and warning requirements of the application are met. The user must analyze all aspects of the application and follow applicable industry standards and Product information. If Seller provides Product or system options, the user is responsible for determining that such data and specifications are suitable and sufficient for all applications and reasonably foreseeable uses of the Products or systems.
9. **Loss to Buyer's Property.** Any designs, tools, patterns, materials, drawings, confidential information or equipment furnished by Buyer or any other items which become Buyer's property, may be considered obsolete and may be destroyed by Seller after two consecutive years have elapsed without Buyer placing an order for the items which are manufactured using such property. Seller shall not be responsible for any loss or damage to such property while it is in Seller's possession or control.
10. **Special Tooling.** A tooling charge may be imposed for any special tooling, including without limitation, dies, fixtures, molds and patterns, acquired to manufacture Products. Such special tooling shall be and remain Seller's property notwithstanding payment of any charges by Buyer. In no event will Buyer acquire any interest in apparatus belonging to Seller which is utilized in the manufacture of the Products, even if such apparatus has been specially converted or adapted for such manufacture and notwithstanding any charges paid by Buyer. Unless otherwise agreed, Seller shall have the right to alter, discard or otherwise dispose of any special tooling or other property in its sole discretion at any time.
11. **Buyer's Obligation; Rights of Seller.** To secure payment of all sums due or otherwise, Seller shall retain a security interest in the goods delivered and this agreement shall be deemed a Security Agreement under the Uniform Commercial Code. Buyer authorizes Seller as its attorney to execute and file on Buyer's behalf all documents Seller deems necessary to perfect its security interest. Seller shall have a security interest in, and lien upon, any property of Buyer in Seller's possession as security for the payment of any amounts owed to Seller by Buyer.
12. **Improper Use and Indemnity.** Buyer shall indemnify, defend, and hold Seller harmless from any claim, liability, damages, lawsuits, and costs (including attorney fees), whether for personal injury, property damage, patent, trademark or copyright infringement or any other claim, brought by or incurred by Buyer, Buyer's employees, or any other person, arising out of: (a) improper selection, improper application or other misuse of Products purchased by Buyer from Seller; (b) any act or omission, negligent or otherwise, of Buyer; (c) Seller's use of patterns, plans, drawings, or specifications furnished by Buyer to manufacture Product; or (d) Buyer's failure to comply with these terms and conditions. Seller shall not indemnify Buyer under any circumstance except as otherwise provided.
13. **Cancellations and Changes.** Orders shall not be subject to cancellation or change by Buyer for any reason, except with Seller's written consent and upon terms that will indemnify, defend and hold Seller harmless against all direct, incidental and consequential loss or damage. Seller may change product features, specifications, designs and availability with notice to Buyer.
14. **Limitation on Assignment.** Buyer may not assign its rights or obligations under this agreement without the prior written consent of Seller.
15. **Entire Agreement.** This agreement contains the entire agreement between the Buyer and Seller and constitutes the final, complete and exclusive expression of the terms of the agreement. All prior or contemporaneous written or oral agreements or negotiations with respect to the subject matter are herein merged.
16. **Waiver and Severability.** Failure to enforce any provision of this agreement will not waive that provision nor will any such failure prejudice Seller's right to enforce that provision in the future. Invalidation of any provision of this agreement by legislation or other rule of law shall not invalidate any other provision herein. The remaining provisions of this agreement will remain in full force and effect.
17. **Termination.** This agreement may be terminated by Seller for any reason and at any time by giving Buyer thirty (30) days written notice of termination. In addition, Seller may by written notice immediately terminate this agreement for the following: (a) Buyer commits a breach of any provision of this agreement (b) the appointment of a trustee, receiver or custodian for all or any part of Buyer's property (c) the filing of a petition for relief in bankruptcy of the other Party on its own behalf, or by a third party (d) an assignment for the benefit of creditors, or (e) the dissolution or liquidation of the Buyer.
18. **Governing Law.** This agreement and the sale and delivery of all Products hereunder shall be deemed to have taken place in and shall be governed and construed in accordance with the laws of the State of Ohio, as applicable to contracts executed and wholly performed therein and without regard to conflicts of laws principles. Buyer irrevocably agrees and consents to the exclusive jurisdiction and venue of the courts of Cuyahoga County, Ohio with respect to any dispute, controversy or claim arising out of or relating to this agreement. Disputes between the parties shall not be settled by arbitration unless, after a dispute has arisen, both parties expressly agree in writing to arbitrate the dispute.
19. **Indemnity for Infringement of Intellectual Property Rights.** Seller shall have no liability for infringement of any patents, trademarks, copyrights, trade dress, trade secrets or similar rights except as provided in this Section. Seller will defend and indemnify Buyer against allegations of infringement of U.S. patents, U.S. trademarks, copyrights, trade dress and trade secrets ("Intellectual Property Rights"). Seller will defend at its expense and will pay the cost of any settlement or damages awarded in an action brought against Buyer based on an allegation that a Product sold pursuant to this Agreement infringes the Intellectual Property Rights of a third party. Seller's obligation to defend and indemnify Buyer is contingent on Buyer notifying Seller within ten (10) days after Buyer becomes aware of such allegations of infringement, and Seller having sole control over the defense of any allegations or actions including all negotiations for settlement or compromise. If a Product is subject to a claim that it infringes the Intellectual Property Rights of a third party, Seller may, at its sole expense and option, procure for Buyer the right to continue using the Product, replace or modify the Product so as to make it noninfringing, or offer to accept return of the Product and return the purchase price less a reasonable allowance for depreciation. Notwithstanding the foregoing, Seller shall have no liability for claims of infringement based on information provided by Buyer, or directed to Products delivered hereunder for which the designs are specified in whole or part by Buyer, or infringements resulting from the modification, combination or use in a system of any Product sold hereunder. The foregoing provisions of this Section shall constitute Seller's sole and exclusive liability and Buyer's sole and exclusive remedy for infringement of Intellectual Property Rights.
20. **Taxes.** Unless otherwise indicated, all prices and charges are exclusive of excise, sales, use, property, occupational or like taxes which may be imposed by any taxing authority upon the manufacture, sale or delivery of Products.
21. **Equal Opportunity Clause.** For the performance of government contracts and where dollar value of the Products exceed \$10,000, the equal employment opportunity clauses in Executive Order 11246, VEVRAA, and 41 C.F.R. §§ 60-1.4(a), 60-741.5(a), and 60-250.4, are hereby incorporated.



June 2023

Fixed Displacement Pump options added to P/M24-30 catalog  
HY28-2683-03/GC/US.



**WARNING**

The products described in this catalog can expose you to chemicals, including Lead, which is known to the State of California to cause cancer and birth defects or other reproductive harm. For more information go to [www.p65warnings.ca.gov](http://www.p65warnings.ca.gov).

Parker Hannifin Corporation  
**Hydraulic Pump and Power Systems Division**  
14249 Industrial Pkwy  
Marysville, OH 43040 USA  
phone 937 644 4532  
fax 937 642 3639  
[www.parker.com/hps](http://www.parker.com/hps)

