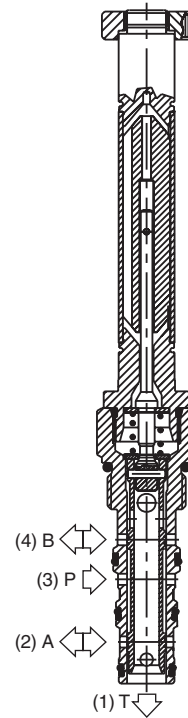
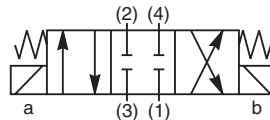


**General Description**

4-Way, 3 Position, Closed Center Spool Valve.  
 For additional information see Technical Tips on pages SV1-SV5.

**Features**

- Four way closed center valve designed to operate double acting cylinders and bi-directional motors, etc.
- One piece cartridge housing ensures internal concentricity
- Coil: Waterproof, hermetically sealed, requires no O’Rings; Symmetrical coil can be reversed without affecting performance.

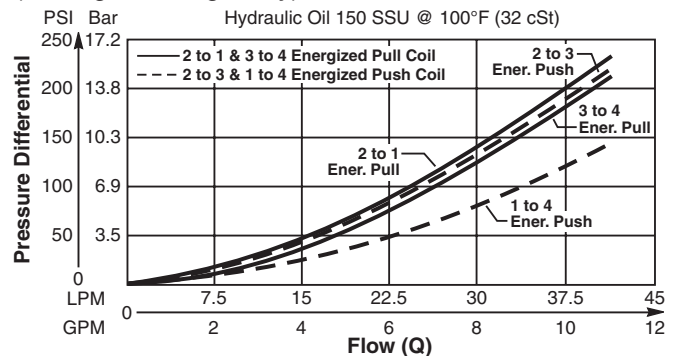


**Specifications**

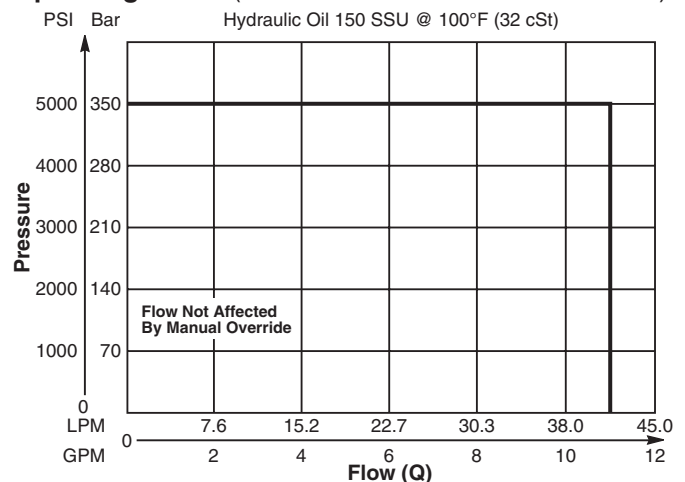
|                               |  |
|-------------------------------|--|
| Rated Flow                    | 42 LPM (11 GPM)  |
| Maximum Inlet Pressure        | 350 Bar (5000 PSI)   |
| Maximum Tank Pressure         | 210 Bar (3000 PSI)   |
| Leakage at 150 SSU (32 cSt)   | 160 cc/min @ 210 Bar (3000 PSI)  |
| Minimum Operating Voltage     | 85% of rated voltage at 20°C (72°F).   |
| Response Time                 | <b>Open</b> 30-60 ms<br><b>Close</b> 20-40 ms  |
| Cartridge Material            | All parts steel. All operating parts hardened steel.   |
| Operating Temp. Range/Seals   | -34°C to +121°C (Nitrile) (-30°F to +250°F)<br>-26°C to +204°C (Fluorocarbon) (-15°F to +400°F)        |
| Fluid Compatibility/Viscosity | Mineral-based or synthetic with lubricating properties at viscosities of 45 to 2000 SSU (6 to 420 cSt) |
| Filtration                    | ISO 4406 18/16/13, SAE Class 4   |
| Approx. Weight                | .26 kg (.58 lbs.)  |
| Cavity                        | C10-4 (See BC Section for more details)  |

**Performance Curves**

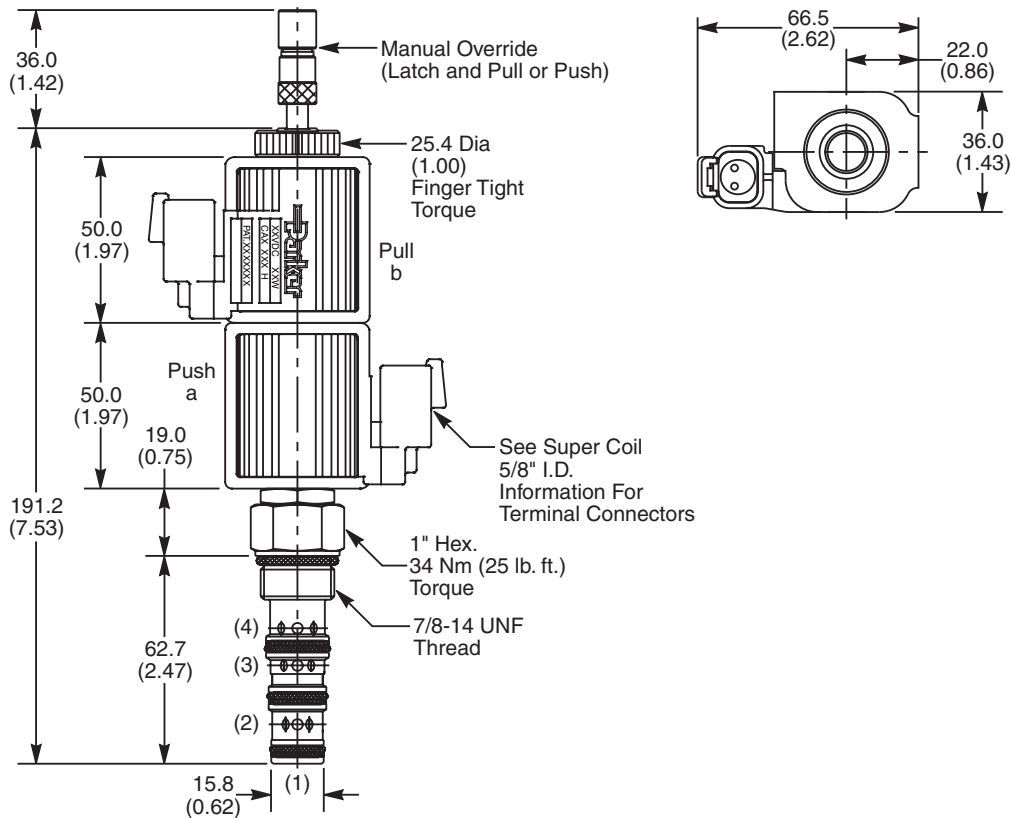
**Pressure Drop vs. Flow Energized - GS045250ND**  
 (Through cartridge only)



**Operating Limits (Measured at 75% of Nominal Current)**



**Dimensions** Millimeters (Inches)



**Ordering Information**

|                        |           |                 |          |       |              |
|------------------------|-----------|-----------------|----------|-------|--------------|
| <b>GS04</b>            | <b>52</b> |                 | <b>0</b> |       | <b>D</b>     |
| 10 Size Solenoid Valve | Style     | Override Option | Screen   | Seals | Design Level |

**Highlighted** represents preferred options that offer the shortest lead times. Other options may be available, but at extended lead times.

**Coil(s) sold separately.** Please see section CE of this catalog, 5/8" Super-Coil (CA series), for ordering information.

*Order Bodies Separately  
 See section BC*

| Code | Style                              |
|------|------------------------------------|
| 52   | High Flow and Pressure ('SP' Coil) |

| Code | Screen                                      |
|------|---|
| 0    | None (Contact factory for OEM requirements) |

|            |              |           |
|------------|--------------|-----------|
| <b>B10</b> | <b>4</b>     |           |
| 10 size    | 4-Way Cavity | Port Size |

| Code | Override Options   |
|------|--|
| 0    | None   |
| 5    | Standard - Center Detent only, Latch Operated, Push and Pull (*40 nt/9 lbs.) |
| 6    | Detented (all positions), Push and Pull                                      |

| Code | Seals / Kit No.                      |
|------|--------------------------------------|
| N    | Nitrile / Buna-N (Std.) (SK30506N-1) |
| V    | Fluorocarbon (SK30506V-1)            |

| Code | Port Size / Body Material    |
|------|------------------------------|
| 8T   | SAE-8 / Steel (5000 PSI)     |
| A8T  | SAE-8 / Aluminium (3000 PSI) |

*\*Force to push at 210 Bar (3000 PSI). Less to Pull.*

| Code | Design Level                    |
|------|---------------------------------|
| D    | Includes Industry Common Cavity |



- CV Check Valves
- SH Shuttle Valves
- LM Load/Motor Controls
- FC Flow Controls
- PC Pressure Controls
- LE Logic Elements
- DC Directional Controls
- MV Manual Valves
- SV Solenoid Valves
- PV Proportional Valves
- CE Coils & Electronics
- CB Cartrak Bodies
- BC Bodies & Cavities
- TD Technical Data