

- CV** Check Valves
- SH** Shuttle Valves
- LM** Load/Motor Controls
- FC** Flow Controls
- PC** Pressure Controls
- LE** Logic Elements
- DC** Directional Controls
- MV** Manual Valves
- SV** Solenoid Valves
- PV** Proportional Valves
- CE** Coils & Electronics
- CB** Cartridge Bodies
- BC** Bodies & Cavities
- TD** Technical Data

General Description

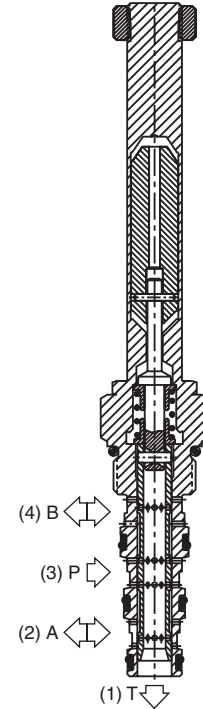
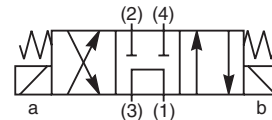
4-Way, 3 Position, Tandem Center Spool Valve.
 For additional information see Technical Tips on pages SV1-SV5.

Features

- Designed to operate double acting cylinders, pilot circuits and bi-directional motors, etc.
- High flow capacity with reduced space requirements
- High pressure capability
- One piece cartridge housing ensures internal concentricity
- Coil: Waterproof, hermetically sealed, requires no O’Rings; Symmetrical coil can be reversed without affecting performance.
- Manual override available

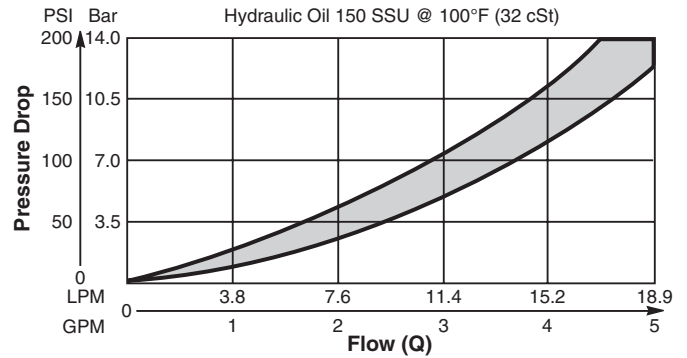
Specifications

| | |
|-------------------------------|--|
| Rated Flow | 13 LPM (3.5 GPM) |
| Maximum Inlet Pressure | 350 Bar (5000 PSI) |
| Maximum Tank Pressure | 210 Bar (3000 PSI) |
| Cartridge Material | All parts steel. All operating parts hardened steel. |
| Operating Temp. Range/Seals | -34°C to +121°C (Nitrile) (-30°F to +250°F) -26°C to +204°C (Fluorocarbon) (-15°F to +400°F) |
| Fluid Compatibility/Viscosity | Mineral-based or synthetic with lubricating properties at viscosities of 45 to 2000 SSU (6 to 420 cSt) |
| Filtration | ISO 4406 18/16/13, SAE Class 4 |
| Approx. Weight | .18 kg (.40 lbs.) |
| Cavity | C08-4 (See BC Section for more details) |

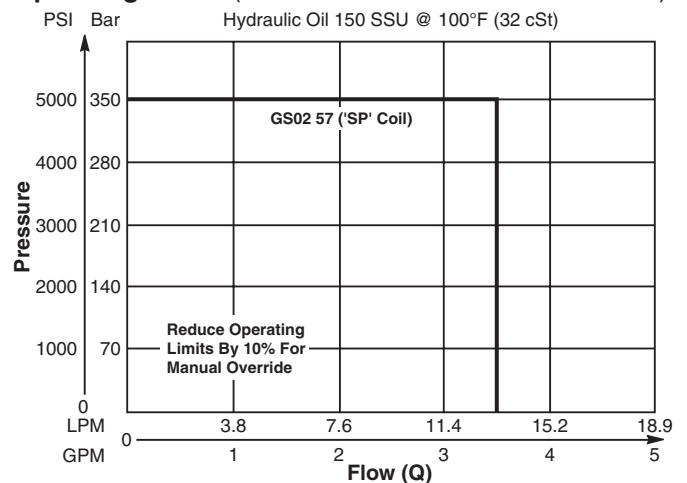


Performance Curves

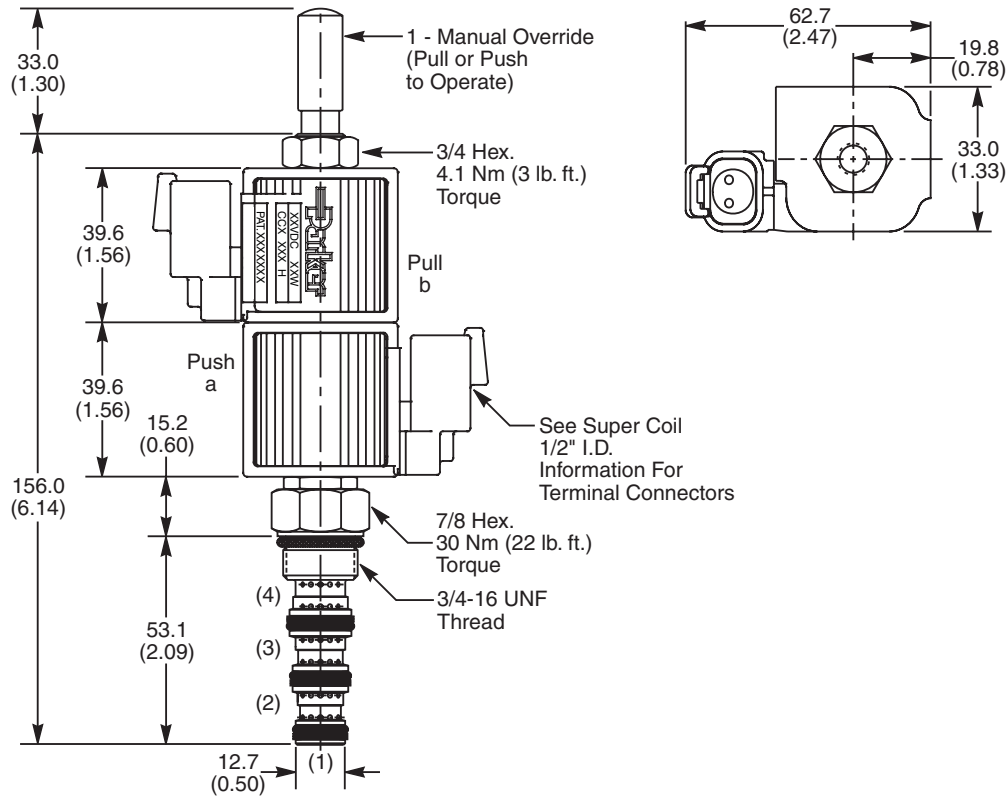
Pressure Drop vs. Flow (Through cartridge only)



Operating Limits (Measured at 75% of Nominal Current)



Dimensions Millimeters (Inches)



Ordering Information

| | | | | |
|------------------------|-----------|-----------------|----------|-------|
| GS02 | 57 | | 0 | |
| 08 Size Solenoid Valve | Style | Override Option | Screen | Seals |

Highlighted represents preferred options that offer the shortest lead times. Other options may be available, but at extended lead times.

Coil(s) sold separately. Please see section CE of this catalog, 1/2" Super-Coil (CC series), for ordering information.

| Code | Style |
|-----------|-----------------------|
| 57 | High Flow ('SP' Coil) |

| Code | Screen |
|----------|---------------|
| 0 | Not Available |

| Code | Override Options |
|----------|------------------|
| 0 | None |
| 1 | Manual Override |
| 2 | Detented M.O. |

| Code | Seals / Kit No. |
|----------|--------------------------------------|
| N | Nitrile / Buna-N (Std.) (SK30078N-1) |
| V | Fluorocarbon / (SK30078V-1) |

Order Bodies Separately
 See section BC

| | | | | |
|------------|---|--------------|---|-----------|
| B08 | — | 4 | — | |
| 08 size | | 4-Way Cavity | | Port Size |

| Code | Port Size / Body Material |
|------|------------------------------|
| 6T | SAE-6 / Steel (5000 PSI) |
| A6T | SAE-6 / Aluminium (3000 PSI) |

- CV Check Valves
- SH Shuttle Valves
- LM Load/Motor Controls
- FC Flow Controls
- PC Pressure Controls
- LE Logic Elements
- DC Directional Controls
- MV Manual Valves
- SV Solenoid Valves
- PV Proportional Valves
- CE Coils & Electronics
- CB Cartrpак Bodies
- BC Bodies & Cavities
- TD Technical Data