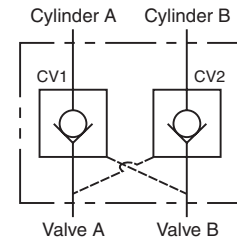
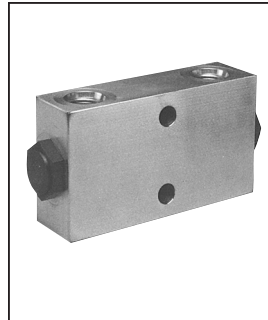


General Description

Pilot Piston Style Dual Pilot Operated Check Valve.
 For additional information see Technical Tips on pages CV1-CV2.

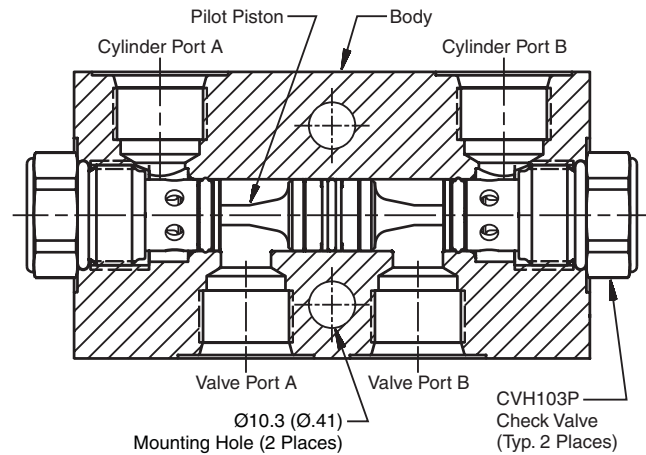


Features

- Spherical poppet for low leakage
- “D” -Ring eliminates back-up rings
- Optional sealed pilot piston

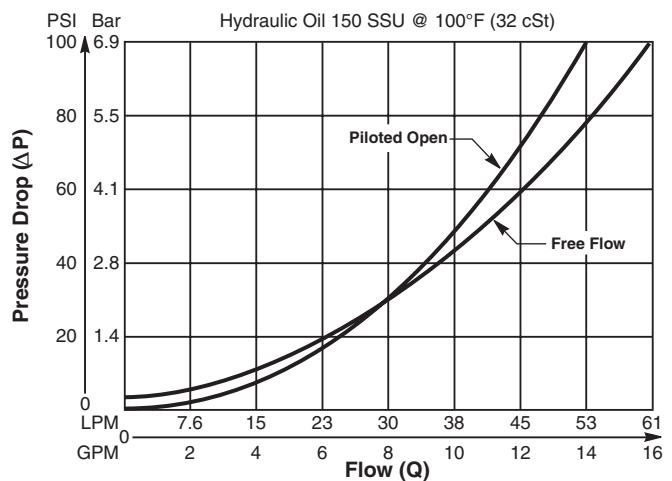
Specifications

Maximum Flow	60 LPM (16 GPM)
Maximum Inlet Pressure	350 Bar (5000 PSI) - CDPH103
Leakage Across Check 150 SSU (32 cSt)	2 drops/min. (0.13 cc/min.)
Leakage Across Pilot Piston (No Seals)	312 cc/min. 0.3 LPM (.08 GPM)
Pilot Ratio	4:1
Pilot Piston Part Numbers	No Seal - 717917 Nitrile Seal - 717917N Fluorocarbon Seal - 717917V
Cartridge Material	All parts steel. All operating parts hardened steel.
Body Material	Steel - CDPH103
Operating Temp. Range (Ambient)	-45°C to +132°C (“D”-Ring) (-50°F to +270°F) -34°C to +121°C (Nitrile) (-30°F to +250°F) -26°C to +204°C (Fluorocarbon) (-15°F to +400°F)
Fluid Compatibility/Viscosity	Mineral-based or synthetic with lubricating properties at viscosities of 45 to 2000 SSU (6 to 420 cSt)
Filtration	ISO-4406 18/16/13, SAE Class 4
Approx. Weight	1.59 kg (3.5 lbs.)



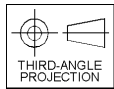
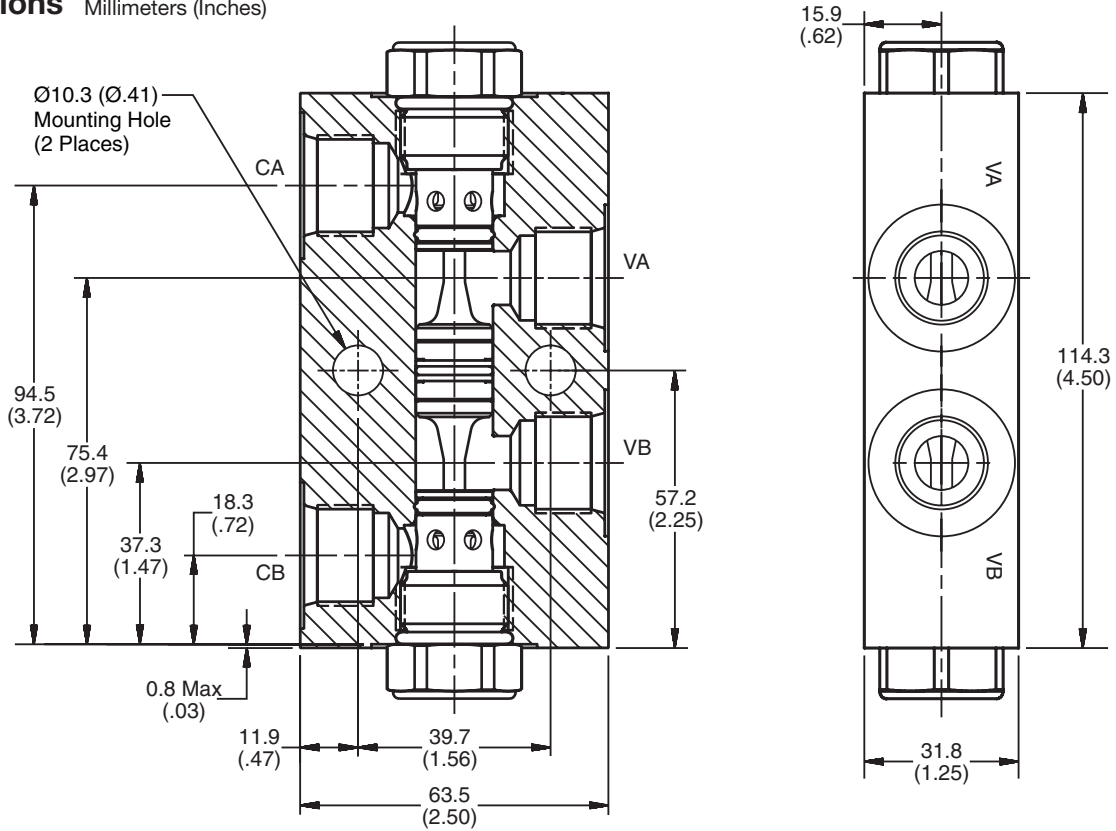
Performance Curve

Pressure Drop vs. Flow (Through cartridge only)



CV	Check Valves
SH	Shuttle Valves
LM	Load/Motor Controls
FC	Flow Controls
PC	Pressure Controls
LE	Logic Elements
DC	Directional Controls
MV	Manual Valves
SV	Solenoid Valves
PV	Proportional Valves
CE	Coils & Electronics
CB	Cartrpак Bodies
BC	Bodies & Cavities
TD	Technical Data

Dimensions Millimeters (Inches)



Ordering Information

CDP	H103				
10 Size Dual Pilot Piston P.O. Check Valve	Model Desc.	Piston Type	Cracking Pressure	Seals	Port Size

Highlighted represents preferred options that offer the shortest lead times. Other options may be available, but at extended lead times.

Code	Model Description
H103	5000 PSI Series

Code	Cracking Pressure
*Omit	0.3 Bar (5 PSI)
20	1.4 Bar (20 PSI)
50	3.5 Bar (50 PSI)
65	4.5 Bar (65 PSI)
100	6.9 Bar (100 PSI)

**Not available with "A" option.*

Code	Port Size / Body Material
8T	SAE-8 (CDPH103 Only) / Steel (5000 PSI)

Code	Piston Type
P	Pilot Piston without seal
A	Pilot Piston with seal Note: Requires 1.4 Bar (20 PSI) crack minimum.

Code	Seals / Kit No.
Omit	"D"-Ring / (SK10-2)
N	Nitrile / (SK10-2)
V	Fluorocarbon / (SK10-2V)