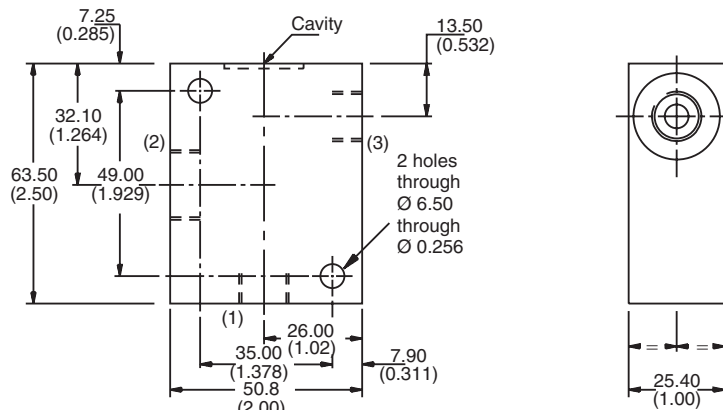
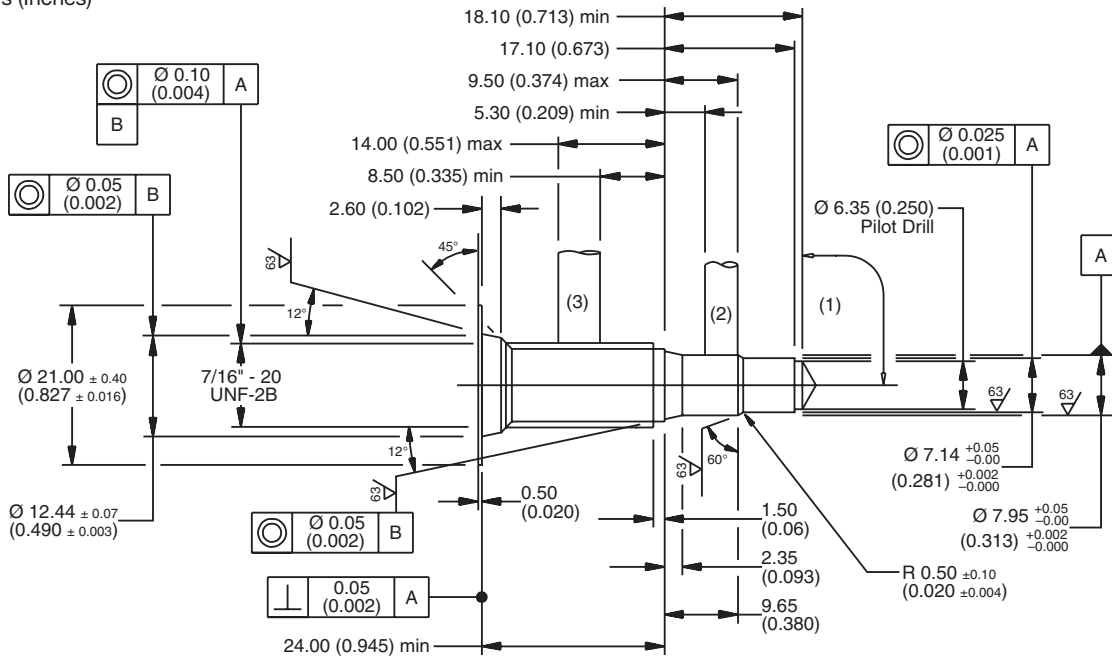
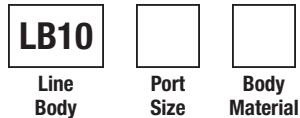


For additional information see Technical Tips on pages BC1-BC2.

Dimensions
 Millimeters (Inches)



Ordering Information



Code	Port Size
815	1/4 SAE

Code	Body Material
A	Aluminum
S	Steel

Cavity Tooling For CAVSW-3	
Pilot Drill Ø	6.35 (0.25)
Step Drill	8DS31378
Reamer (Alum)	8RM31086A
Reamer (Steel)	8RM31086S
Counterbore	—
Tap	8TP31221

**Please be advised that this is a non-core line body.
 Additional lead-time and/or pricing requirements may exist when ordering.*