

General Description

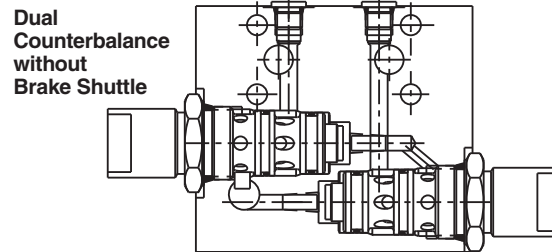
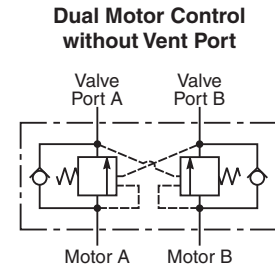
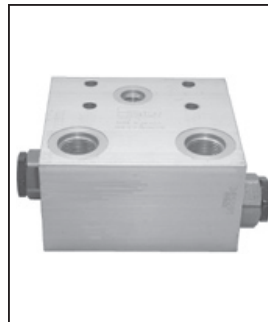
Manifold Mounted Motor Control Valve to fit the TB, TE, TF and TG series Parker motors. For additional information see Technical Tips on pages LM1-LM4.

Features

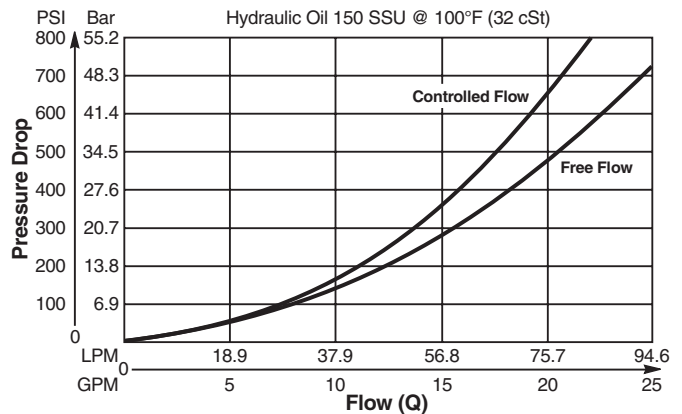
- Hardened and precision ground parts for long life
- Compact size for reduced space requirements
- Low leakage design
- Fluorocarbon seals standard

Specifications

Maximum Flow	93.75 LPM (25 GPM)
Maximum Operating Press.	210 Bar (3000 PSI)
Minimum Pilot Pressure	20.7 Bar (300 PSI)
Leakage at 150 SSU (32 cSt)	5 drops/min. (.33 cc/min.) @ 80% of holding pressure
Valve Material	All parts steel. All operating parts hardened steel.
Body Material	Aluminum
Operating Temp. Range/Seals	-26°C to +204°C (Fluorocarbon) (-15°F to +400°F)
Fluid Compatibility/Viscosity	Mineral-based or synthetic with lubricating properties at viscosities of 45 to 2000 SSU (6 to 420 cSt)
Filtration	ISO-4406 18/16/13, SAE Class 4
Approx. Weight	Single 1.54 kg (3.4 lbs.) Double 3.10 kg (6.8 lbs.)
Cavity	CDD-1036 for MHC-022



**Performance Curve
Flow vs. Inlet Pressure**



Ordering Information

MMB — **025** — — — — **M** — **H** — **54** —

Manifold Motor Control Valve Nominal Flow Rating Vent Setting Cartridge Location Pilot Ratio Manifold Mounted Body Pressure (Setting) Body Porting Brake Release Port

Code	Nominal Flow Rating
025	93.8 LPM (25 GPM)

Code	Cartridge Location
A	Motor Control on A Port
B	Motor Control on B Port
D	Dual Motor Control

Code	Pilot Ratio
A	1:1 Equal Area
J	10:1

Code	Body Porting
54	SAE-12 V1 and V2 Ports

Code	Vent Setting
Omit	No Vent
V	Vent

Code	Pressure (Setting)
H	Hold Pressure 210 Bar (3000 PSI) Brake Release Pressure 24.1 Bar (350 PSI)

Code	Brake Release Port
N	No Port
B	SAE-6

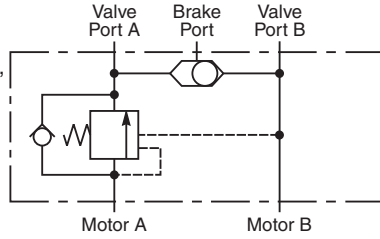


- CV**
- Check Valves
- SH**
- Shuttle Valves
- LM**
- Load/Motor Controls
- FC**
- Flow Controls
- PC**
- Pressure Controls
- LE**
- Logic Elements
- DC**
- Directional Controls
- MV**
- Manual Valves
- SV**
- Solenoid Valves
- PV**
- Proportional Valves
- CE**
- Coils & Electronics
- BC**
- Bodies & Cavities
- TD**
- Technical Data

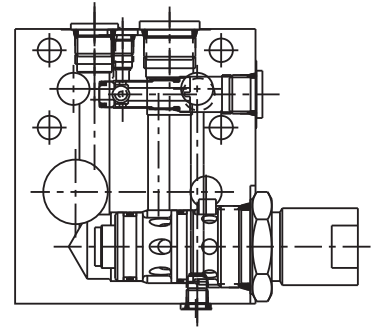
Symbols and Construction Views

- CV** Check Valves
- SH** Shuttle Valves
- LM** Load/Motor Controls
- FC** Flow Controls
- PC** Pressure Controls
- LE** Logic Elements
- DC** Directional Controls
- MV** Manual Valves
- SV** Solenoid Valves
- PV** Proportional Valves
- CE** Coils & Electronics
- BC** Bodies & Cavities
- TD** Technical Data

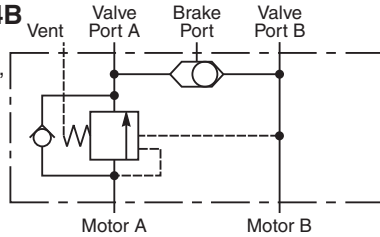
MMB-025-A*MH-54B
A Port Motor Control with Brake Release Shuttle, Non-Vented Cartridge



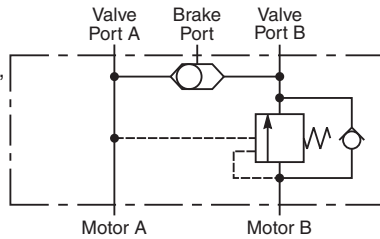
MMB-025-A*MH-54B (Non-Vented)
MMB-025-V-A*MH-54B (Vented)
A Port Motor Control with Brake Release Shuttle



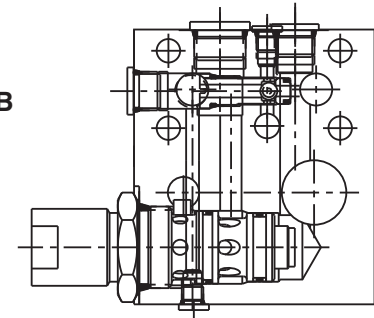
MMB-025-V-A*MH-54B
A Port Motor Control with Brake Release Shuttle, Vented Cartridge



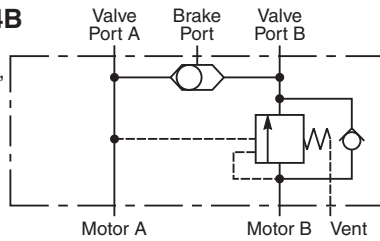
MMB-025-B*MH-54B
B Port Motor Control with Brake Release Shuttle, Non-Vented Cartridge



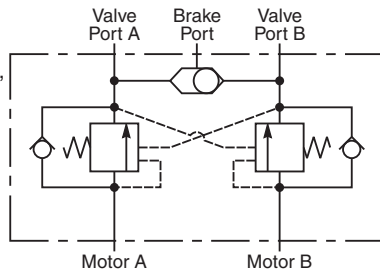
MMB-025-B*MH-54B (Non-Vented)
MMB-025-V-B*MH-54B (Vented)
B Port Motor Control with Brake Release Shuttle



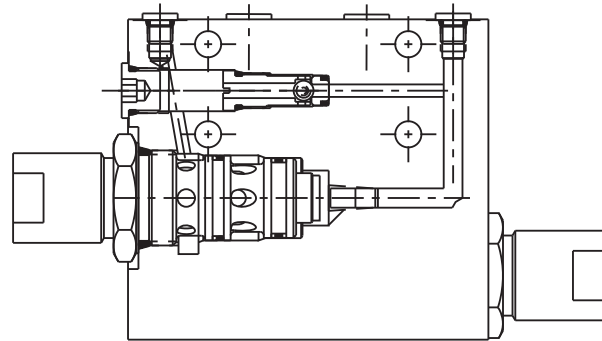
MMB-025-V-B*MH-54B
B Port Motor Control with Brake Release Shuttle, Vented Cartridge



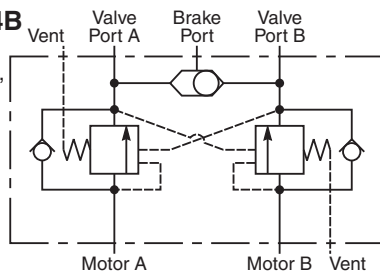
MMB-025-D*MH-54B
Dual Motor Control with Brake Release Shuttle, Non-Vented Cartridges



MMB-025-D*MH-54B (Non-Vented)
MMB-025-V-D*MH-54B (Vented)
Dual Motor Control with Brake Release Shuttle



MMB-025-V-D*MH-54B
Dual Motor Control with Brake Release Shuttle, Vented Cartridges

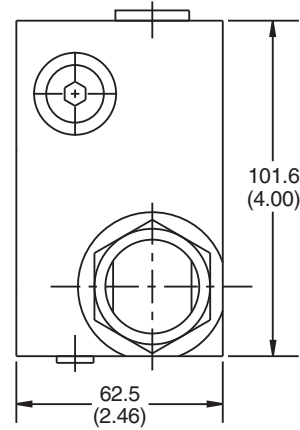
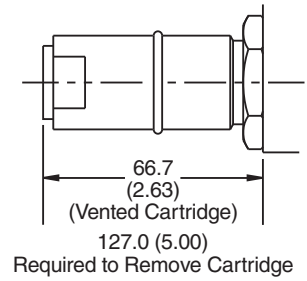
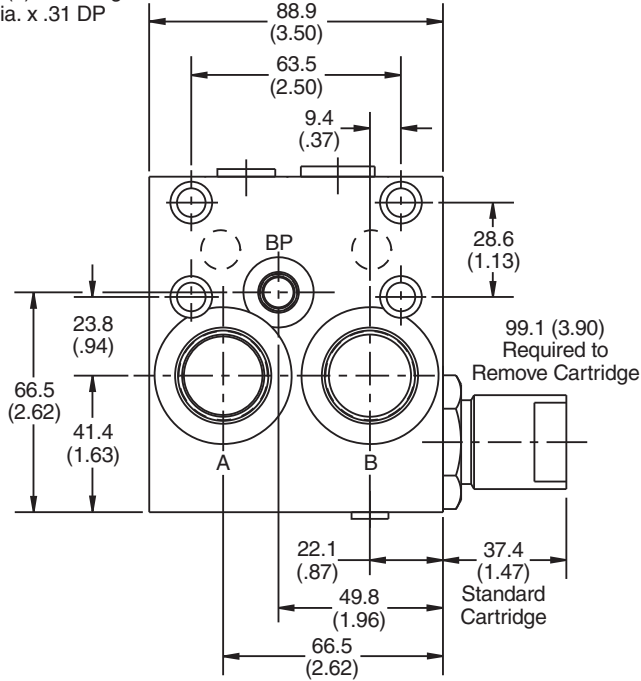


Dimensions

*Inch equivalents for millimeter dimensions are shown in (**)

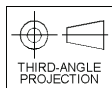
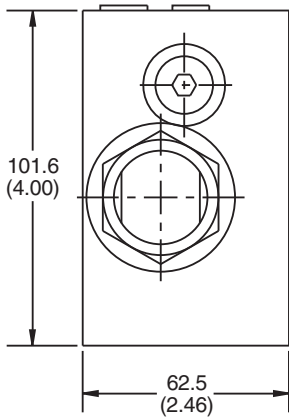
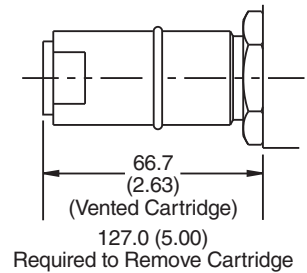
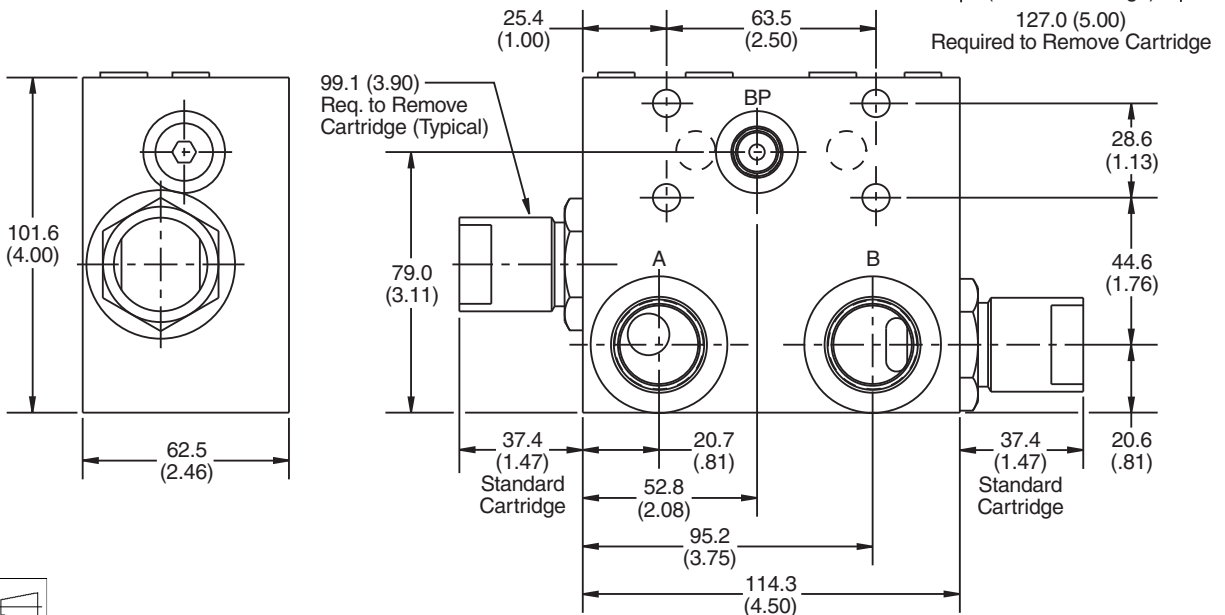
Series MMB-025-B*MH-54B
B Port Motor Control Non-Vented Cartridge

A & B Ports are #12 SAE (1/16-12 UN-2B Thread)
Brake Shuttle Port is #6 SAE (9/16-18 UNF-2B Thread)
.344 Dia. Thru (4) Mounting Holes
C'Bored .50 Dia. x .31 DP



Series MMB-025-D*MH-54B
Dual Motor Control Valve Non-Vented Cartridges

A & B Ports are #12 SAE (1/16-12 UN-2B Thread)
Brake Shuttle Port is #6 SAE (9/16-18 UNF-2B Thread)
.344 Dia. Thru (4) Mounting Holes



- CV
- Check Valves
- SH
- Shuttle Valves
- LM
- Load/Motor Controls
- FC
- Flow Controls
- PC
- Pressure Controls
- LE
- Logic Elements
- DC
- Directional Controls
- MV
- Manual Valves
- SV
- Solenoid Valves
- PV
- Proportional Valves
- CE
- Coils & Electronics
- BC
- Bodies & Cavities
- TD
- Technical Data