

Technical Information

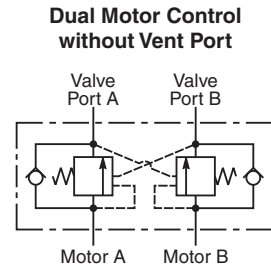
- CV Check Valves
- SH Shuttle Valves
- LM Load/Motor Controls
- FC Flow Controls
- PC Pressure Controls
- LE Logic Elements
- DC Directional Controls
- MV Manual Valves
- SV Solenoid Valves
- PV Proportional Valves
- CE Coils & Electronics
- BC Bodies & Cavities
- TD Technical Data

General Description

Manifold Mounted Motor Control Valve to fit the TB, TE, TF and TG series Parker motors. For additional information see Technical Tips on pages LM1-LM4.

Features

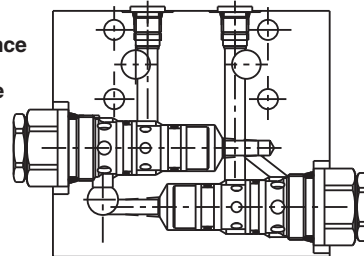
- Hardened and precision ground parts for long life
- Compact size for reduced space requirements
- Low leakage design
- Fluorocarbon seals standard



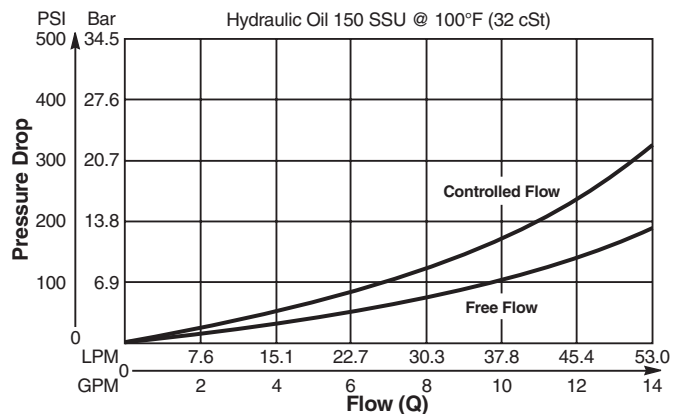
Specifications

Maximum Flow	56.25 LPM (15 GPM)
Maximum Operating Press.	210 Bar (3000 PSI)
Minimum Pilot Pressure	20.7 Bar (300 PSI)
Leakage at 150 SSU (32 cSt)	5 drops/min. (.33 cc/min.) @ 80% of holding pressure
Valve Material	All parts steel. All operating parts hardened steel.
Body Material	Aluminum
Operating Temp. Range/Seals	-26°C to +204°C (Fluorocarbon) (-15°F to +400°F)
Fluid Compatibility/ Viscosity	Mineral-based or synthetic with lubricating properties at viscosities of 45 to 2000 SSU (6 to 420 cSt)
Filtration	ISO-4406 18/16/13, SAE Class 4
Approx. Weight	Single 0.68 kg (1.5 lbs.) Double 1.36 kg (3.0 lbs.)
Cavity	CDD-1010 for MHC-010

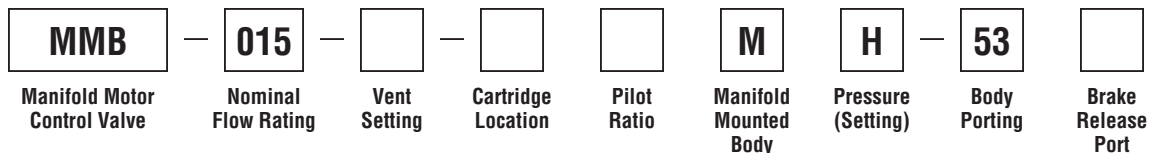
Dual Counterbalance without Brake Shuttle



Performance Curve
Flow vs. Inlet Pressure



Ordering Information



Code	Nominal Flow Rating
015	56.3 LPM (15 GPM)

Code	Cartridge Location
A	Motor Control on A Port
B	Motor Control on B Port
D	Dual Motor Control

Code	Pilot Ratio
A	1:1 Equal Area
J	10:1

Code	Body Porting
53	SAE-10 V1 and V2 Ports

Code	Vent Setting
Omit	No Vent
V	Vent

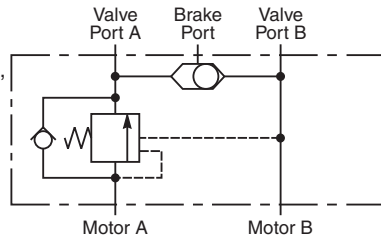
Code	Pressure (Setting)
H	Hold Pressure 210 Bar (3000 PSI) Brake Release Pressure 24.1 Bar (350 PSI)

Code	Brake Release Port
N	No Port (Dual Motor Control Only)
B	SAE-6



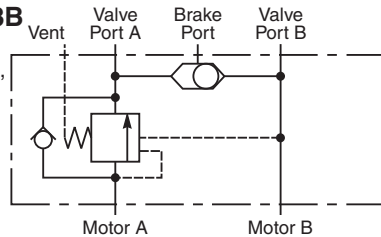
MMB-015-A*MH-53B

A Port Motor Control with Brake Release Shuttle, Non-Vented Cartridge



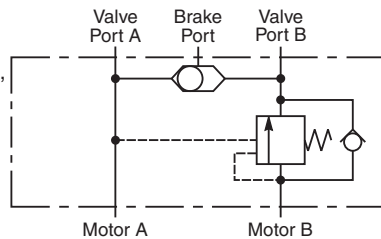
MMB-015-V-A*MH-53B

A Port Motor Control with Brake Release Shuttle, Vented Cartridge



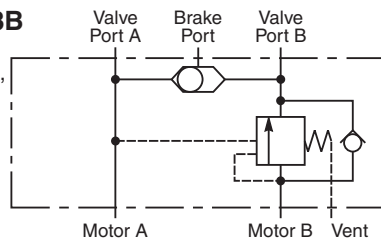
MMB-015-B*MH-53B

B Port Motor Control with Brake Release Shuttle, Non-Vented Cartridge



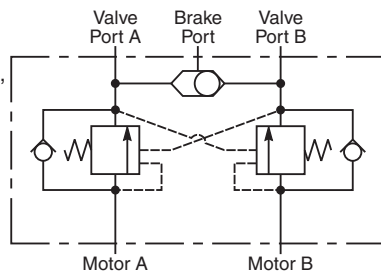
MMB-015-V-B*MH-53B

B Port Motor Control with Brake Release Shuttle, Vented Cartridge



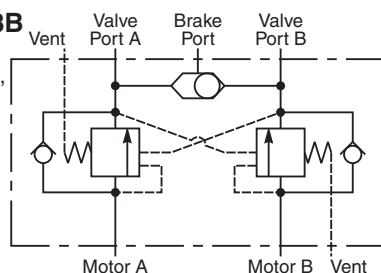
MMB-015-D*MH-53B

Dual Motor Control with Brake Release Shuttle, Non-Vented Cartridges



MMB-015-V-D*MH-53B

Dual Motor Control with Brake Release Shuttle, Vented Cartridges



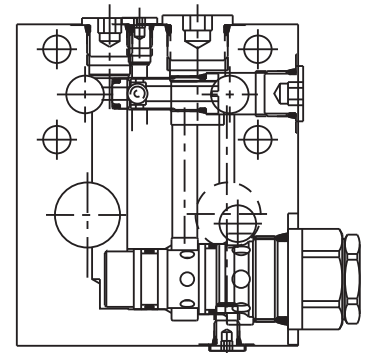
MMB-015-A*MH-53B

(Non-Vented)

MMB-015-V-A*MH-53B

(Vented)

A Port Motor Control Manifold Mount with Brake Shuttle



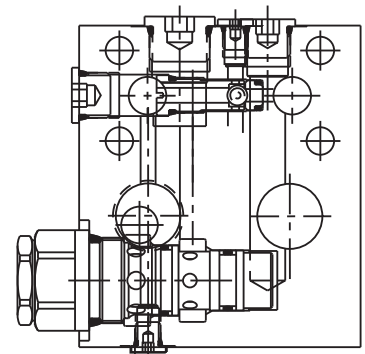
MMB-015-B*MH-53B

(Non-Vented)

MMB-015-V-B*MH-53B

(Vented)

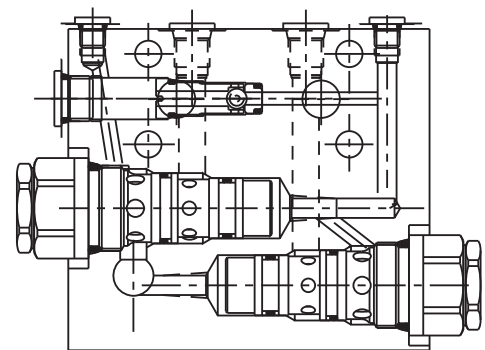
B Port Motor Control Manifold Mount with Brake Shuttle



MMB-015-D*MH-53B (Non-Vented)

MMB-015-V-D*MH-53B (Vented)

Dual Counterbalance with Brake Shuttle



CV

Check Valves

SH

Shuttle Valves

LM

Load/Motor Controls

FC

Flow Controls

PC

Pressure Controls

LE

Logic Elements

DC

Directional Controls

MV

Manual Valves

SV

Solenoid Valves

PV

Proportional Valves

CE

Coils & Electronics

BC

Bodies & Cavities

TD

Technical Data

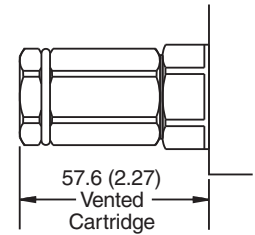
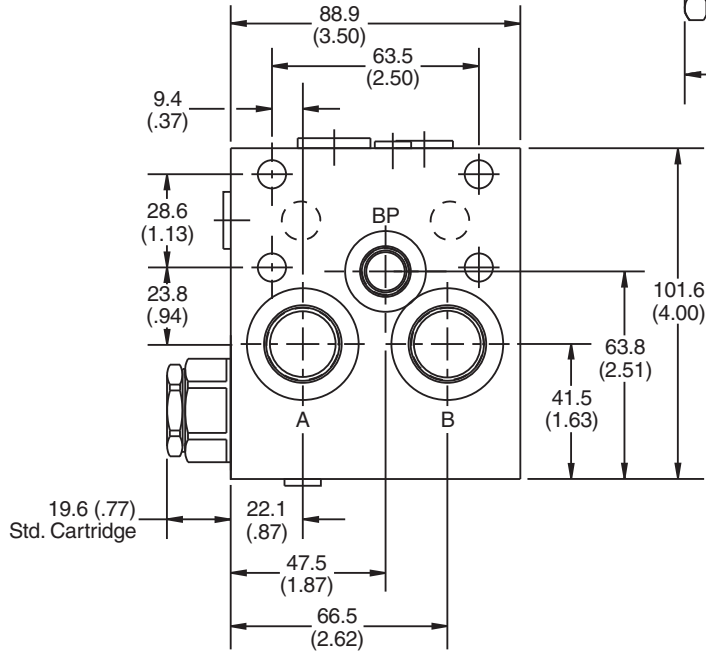
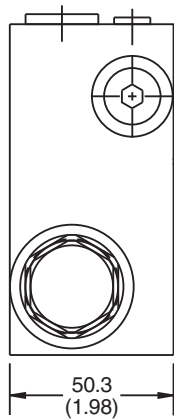
Dimensions

*Inch equivalents for millimeter dimensions are shown in (**)

Series MMB-015-A*MH-53B

A Port Motor Control Non-Vented Cartridge

A & B Ports are #10 SAE (7/8-14 UNF-2B Thread)
Brake Shuttle Port is #6 SAE (9/16-18 UNF-2B Thread)
.343 Dia. Thru (4) Mounting Holes

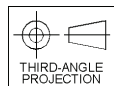
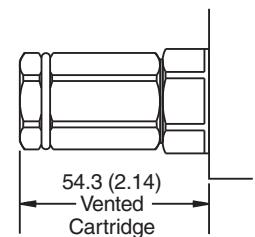
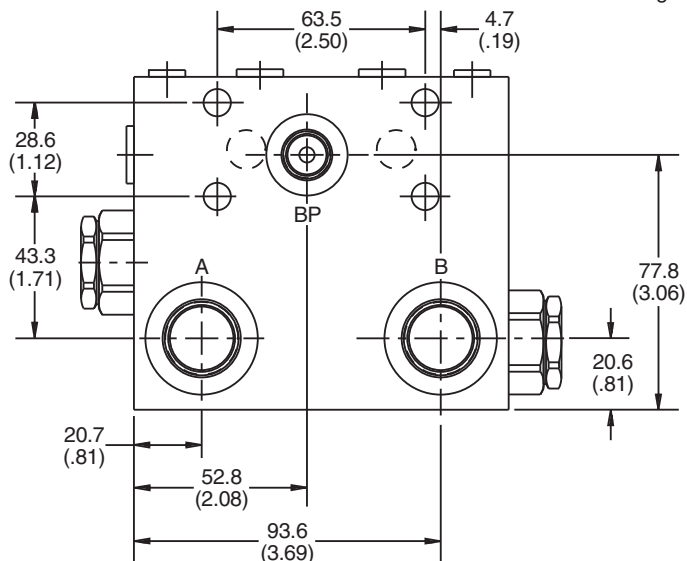
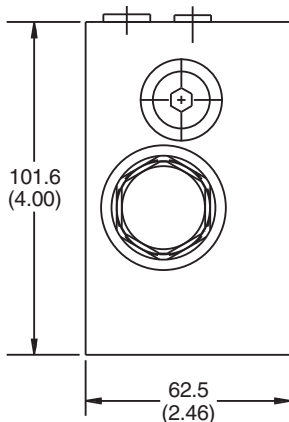


Series MMB-015-D*MH-53B

Dual Motor Control Valve Non-Vented Cartridges

SAE-10 Porting with SAE-6 Brake Port

A & B Ports are #10 SAE (7/8-14 UNC-2B Thread)
Brake Shuttle Port is #6 SAE (9/16-18 UN-2B Thread)
.343 Dia. Thru (4) Mounting Holes



- CV Check Valves
- SH Shuttle Valves
- LM Load/Motor Controls
- FC Flow Controls
- PC Pressure Controls
- LE Logic Elements
- DC Directional Controls
- MV Manual Valves
- SV Solenoid Valves
- PV Proportional Valves
- CE Coils & Electronics
- BC Bodies & Cavities
- TD Technical Data