

**General Description**

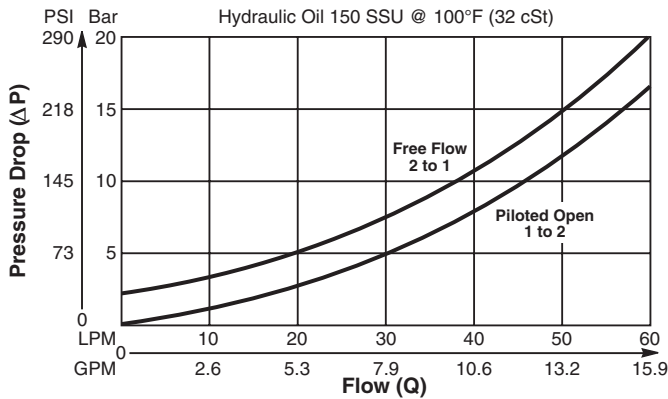
Pilot to Open, Poppet Type Check Valve. For additional information see Technical Tips on pages CV1-CV4.

**Features**

- Hardened poppet for maximum durability
- High flow capacity
- Low leakage - less than 3 drops/min.
- Sealed pilot
- Good contamination tolerance
- Cavity commonality with load control valves
- Dual line blocks available
- All external parts zinc plated

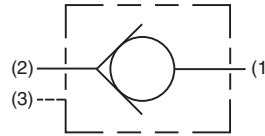
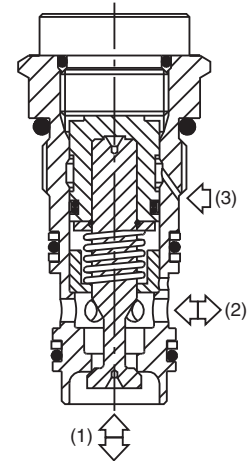
**Performance Curve**

**Pressure Drop vs. Flow** (Through cartridge only)

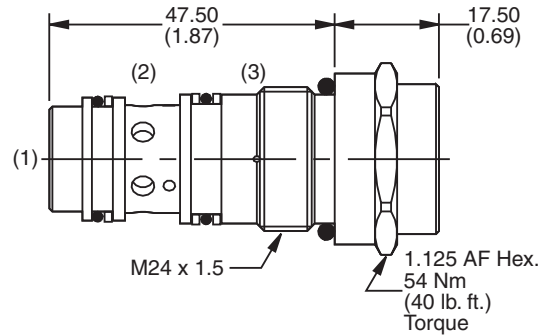


**Specifications**

<b>Rated Flow</b>	60 LPM (16 GPM)
<b>Nominal Flow @ 7 Bar (100 PSI)</b>	32 LPM (8.5 GPM) (Pilot Open)
<b>Maximum Inlet Pressure</b>	420 Bar (6000 PSI)
<b>Leakage at 150 SSU (32 cSt)</b>	Less than 3 drops/min.
<b>Cracking Pressure</b>	3 Bar (43.5 PSI)
<b>Pilot Ratio</b>	4:1
<b>Cartridge Material</b>	Steel operating parts, hardened steel poppet.
<b>Operating Temp. Range/Seals</b>	-34°C to +121°C (Nitrile, Buna-N) (-30°F to +250°F) -26°C to +204°C (Fluorocarbon) (-15°F to +400°F)
<b>Fluid Compatibility/Viscosity</b>	Mineral-based or synthetic with lubricating properties at viscosities of 45 to 2000 SSU (6 to 420 cSt)
<b>Filtration</b>	ISO-4406 18/16/13, SAE Class 4
<b>Approx. Weight</b>	.15 kg (.33 lbs.)
<b>Cavity</b>	68-1 (See BC Section for more details)



**Dimensions** Millimeters (Inches)



**Ordering Information**

**D4A040**   
 Check Valve      Seals

Code	Seals / Kit No.
N	Nitrile, Buna-N / (SK30059N-1)
V	Fluorocarbon / (SK30059V-1)

*Order Bodies Separately*

**LB10**    
 Line Body    Porting    Body Material

Code	Porting
253	1/2" SAE (Main) 1/4" SAE (Aux.)
261	1/2" SAE Dual Cavity

Code	Body Material
A	Aluminum
S	Steel

**CV** Check Valves

**SH** Shuttle Valves

**LM** Load/Motor Controls

**FC** Flow Controls

**PC** Pressure Controls

**LE** Logic Elements

**DC** Directional Controls

**MV** Manual Valves

**SV** Solenoid Valves

**PV** Proportional Valves

**CE** Coils & Electronics

**BC** Bodies & Cavities

**TD** Technical Data