

Technical Information

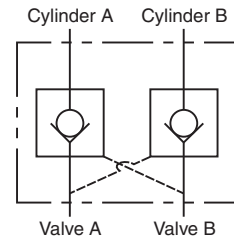
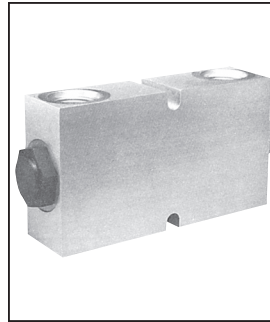
- CV** Check Valves
- SH** Shuttle Valves
- LM** Load/Motor Controls
- FC** Flow Controls
- PC** Pressure Controls
- LE** Logic Elements
- DC** Directional Controls
- MV** Manual Valves
- SV** Solenoid Valves
- PV** Proportional Valves
- CE** Coils & Electronics
- BC** Bodies & Cavities
- TD** Technical Data

General Description

Pilot Piston Style Dual Pilot Operated Check Valve. For additional information see Technical Tips on pages CV1-CV4.

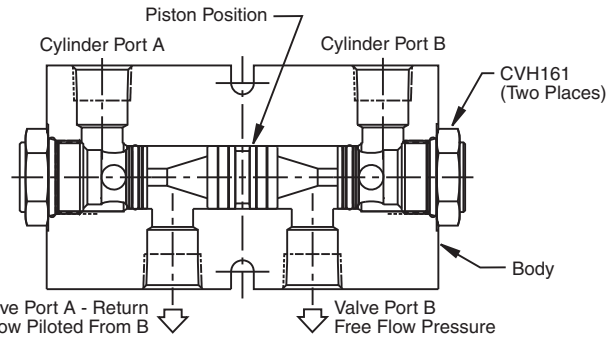
Features

- Hardened precision ground parts for durability
- Optional sealed pilot piston



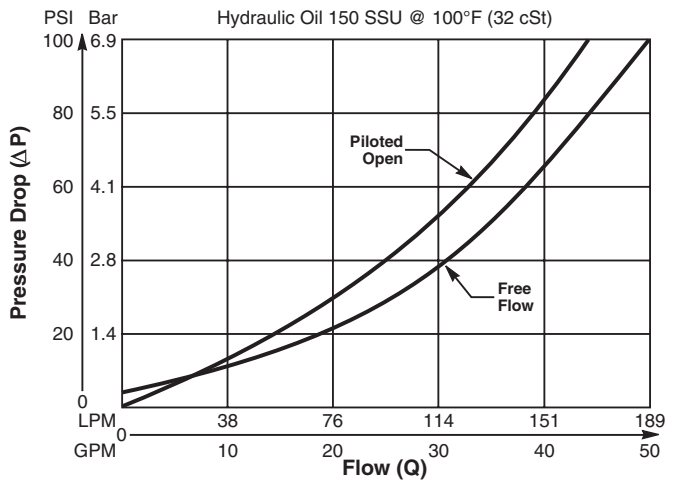
Specifications

Maximum Flow	187 LPM (50 GPM)
Maximum Inlet Pressure	210 Bar (3000 PSI) - CDP161 350 Bar (5000 PSI) - CDPH161
Leakage at 150 SSU (32 cSt)	5 drops/min (.33 cc/min) @ 350 Bar (5000 psi)
Leakage Across Pilot Piston (No Seals)	312 cc/min 0.3 LPM (.08 GPM)
Pilot Ratio	3:1
Pilot Piston Part Numbers	No Seal - 717918 Nitrile Seal - 717918N Fluorocarbon - 717918V
Cartridge Material	All parts steel. All operating parts hardened steel.
Body Material	Aluminum - CDP161 Steel - CDPH161
Operating Temp. Range (Ambient)	-34°C to +121°C (Nitrile) (-30°F to +250°F) -26°C to +204°C (Fluorocarbon) (-15°F to +400°F)
Filtration	ISO-4406 18/16/13, SAE Class 4
Fluids	Mineral-based or synthetic with lubricating properties at viscosities of 45 to 2000 SSU (6 to 420 cSt)
Approx. Weight	

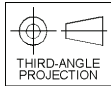
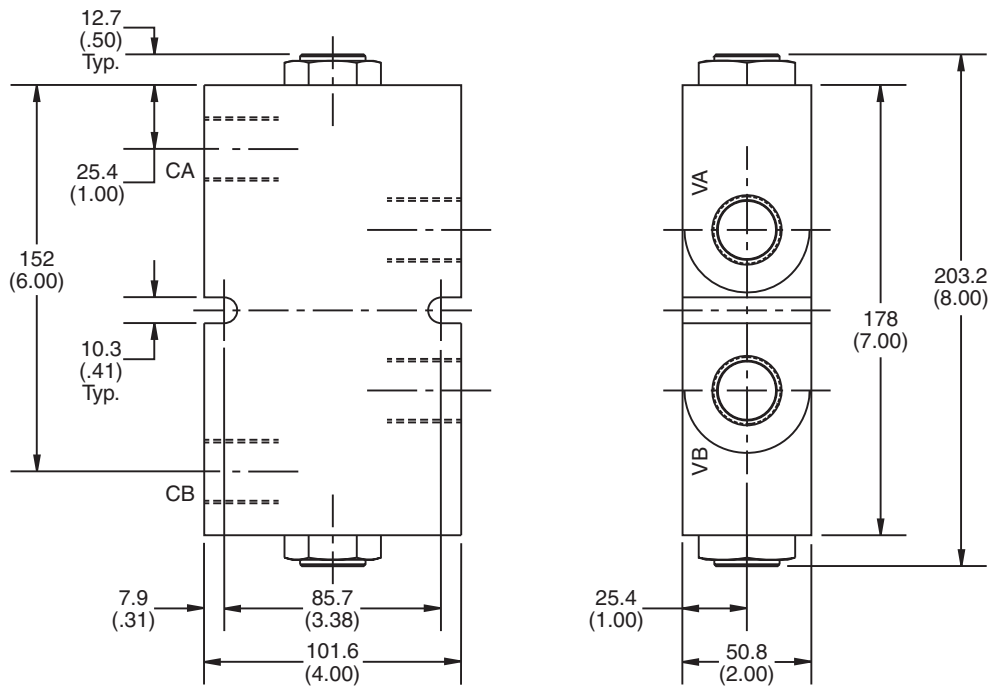


Performance Curve

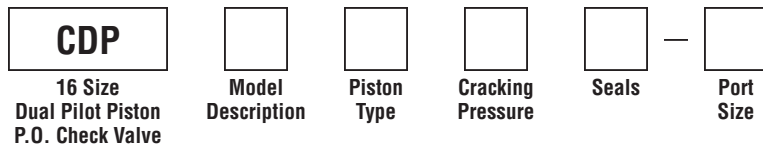
Pressure Drop vs. Flow (Through cartridge only)



Dimensions Millimeters (Inches)



Ordering Information



Code	Model Description
161	3000 PSI Series
H161	5000 PSI Series

Code	Cracking Pressure
*Omit	0.3 Bar (5 PSI)
20	1.4 Bar (20 PSI)
65	4.5 Bar (65 PSI)
175	12.1 Bar (175 PSI)

Code	Seals / Kit No.
Omit	Nitrile / (SK16-2N)
V	Fluorocarbon / (SK16-2V)

Code	Port Size	Material
A16T	SAE-16	Aluminum (CDP161 Only)
16T	SAE-16	Steel (CDPH161 Only)

Code	Piston Type
P	Pilot Piston without seal
A	Pilot Piston with seal Note: Requires 1.4 Bar (20 PSI) crack minimum.

**Not available with "A" option.*