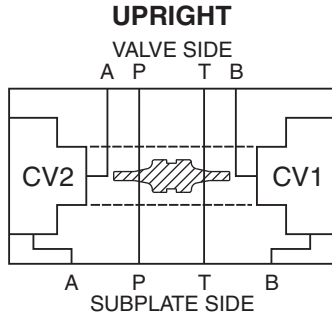


General Description

Dual P.O. Check D03 Cartpak Body.
 For additional information see Technical Tips on pages BC1-BC6.

Body Schematic



Ordering Information



Code	Plug Seals	Code	Body Material
Omit	Nitrile	A	Aluminum
V	Fluorocarbon		

Body supplied with:

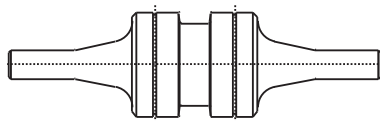
- O-Rings and Drive Pin Kit

Functional assembly requires:

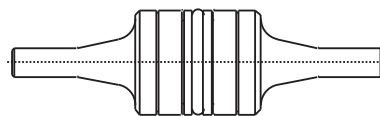
- CVH103P* - Check Valve - Qty. 2 - Ordered Separately
- 717917† - Pilot Piston - Qty. 1 - Ordered Separately

* Indicates spring pressure option
 † Indicates seal option

Requires Dual Pilot Piston

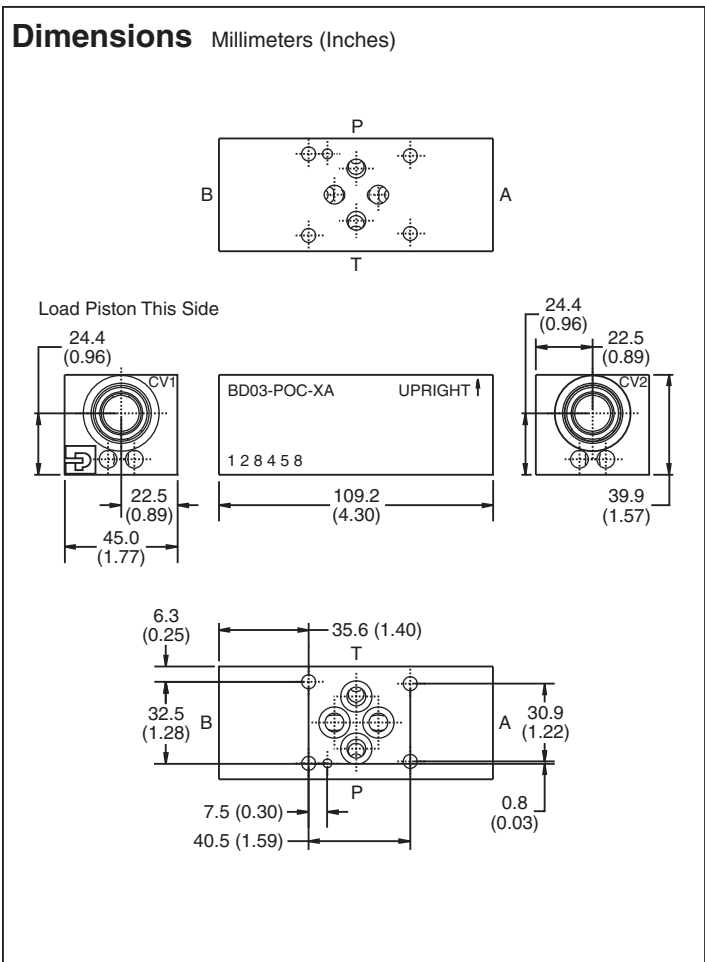


717917 Without Seal



717917N With Buna N Seal
 717917V With Viton Seal

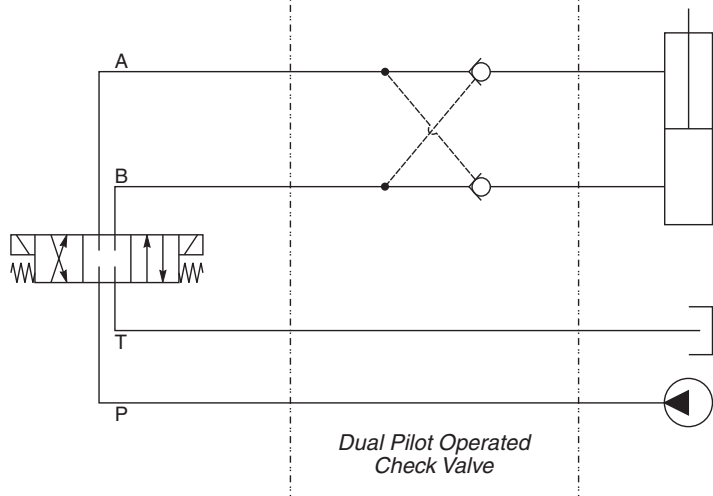
NOTE: 20 PSI check valve or higher recommended with sealed pilot piston.



Dual Checks
 Cavity CV1 and CV2:
 CVH103P

Check on CV1
 CVH103P
 Load Piston This Side

Check on CV2
 CVH103P



CV Check Valves

SH Shuttle Valves

LM Load/Motor Controls

FC Flow Controls

PC Pressure Controls

LE Logic Elements

DC Directional Controls

MV Manual Valves

SV Solenoid Valves

PV Proportional Valves

CE Coils & Electronics

BC Bodies & Cavities

TD Technical Data