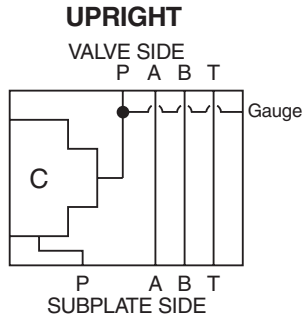


**General Description**

P Port Interrupt, 2-Way, D03 Cartpak Body.  
 For additional information see Technical Tips on pages BC1-BC6.

**Body Schematic**



**Ordering Information**

**BD03** — **PN2** —  —

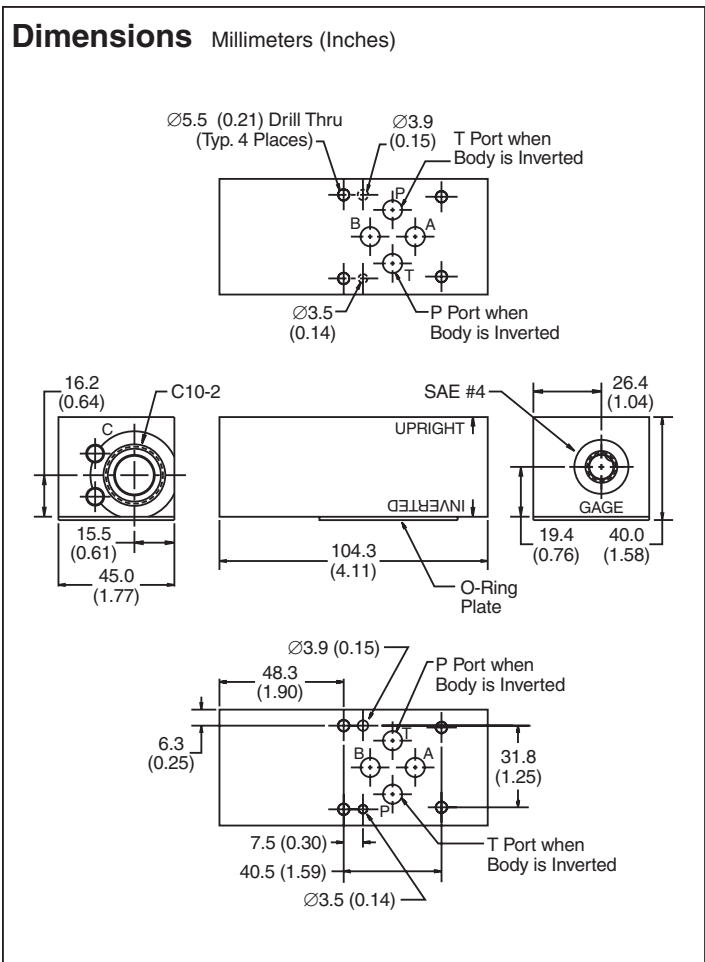
D03 Cartpak Body      P Port Interrupt 2-Way      Plug Seals      Body Material

Code	Plug Seals
Omit	Nitrile
V	Fluorocarbon

Code	Body Material
A	Aluminum
S	Steel (Ductile Iron)

**Body supplied with:**

- Gage Port Plug Installed
- O-Ring Plate, O-Rings and Drive Pin Kit

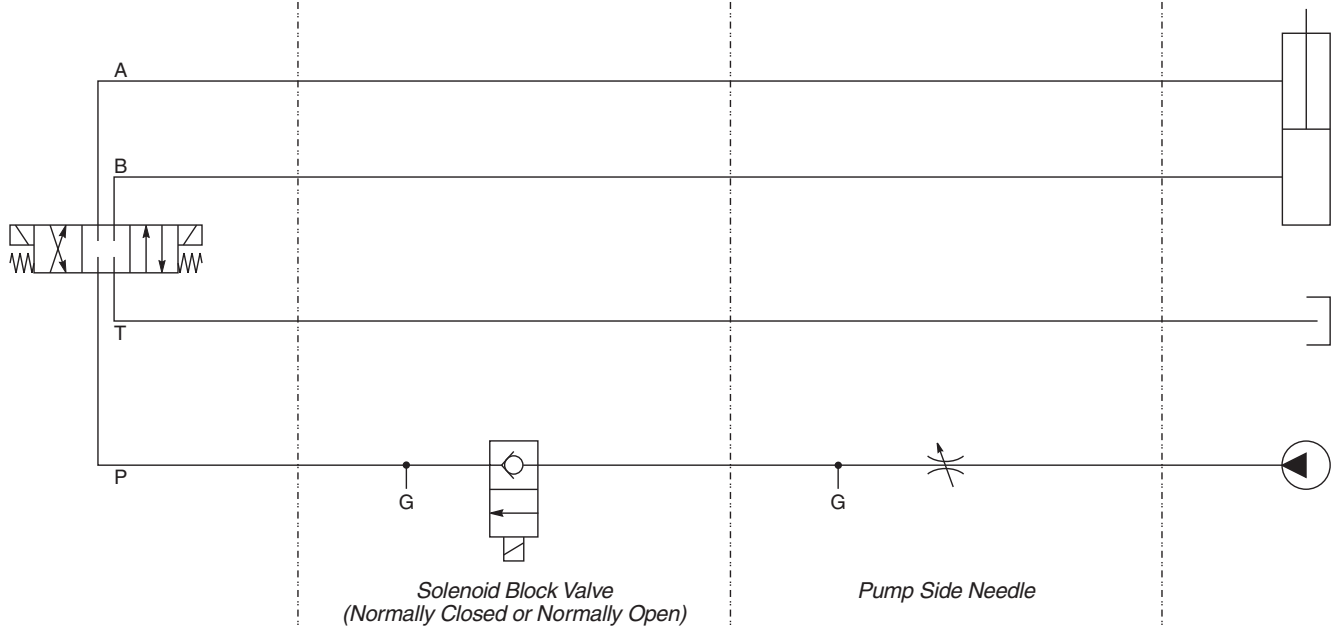


**Cavity C:** DSL101\*  
 DSH101\*

**Direction:** Upright

**Cavity C:** NVH101  
 FV101

**Direction:** Upright



- CV** Check Valves
- SH** Shuttle Valves
- LM** Load/Motor Controls
- FC** Flow Controls
- PC** Pressure Controls
- LE** Logic Elements
- DC** Directional Controls
- MV** Manual Valves
- SV** Solenoid Valves
- PV** Proportional Valves
- CE** Coils & Electronics
- BC** Bodies & Cavities
- TD** Technical Data