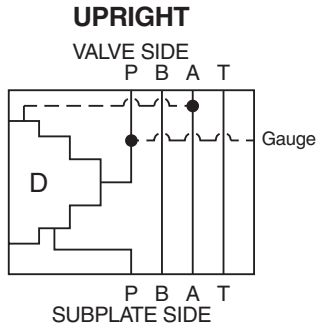


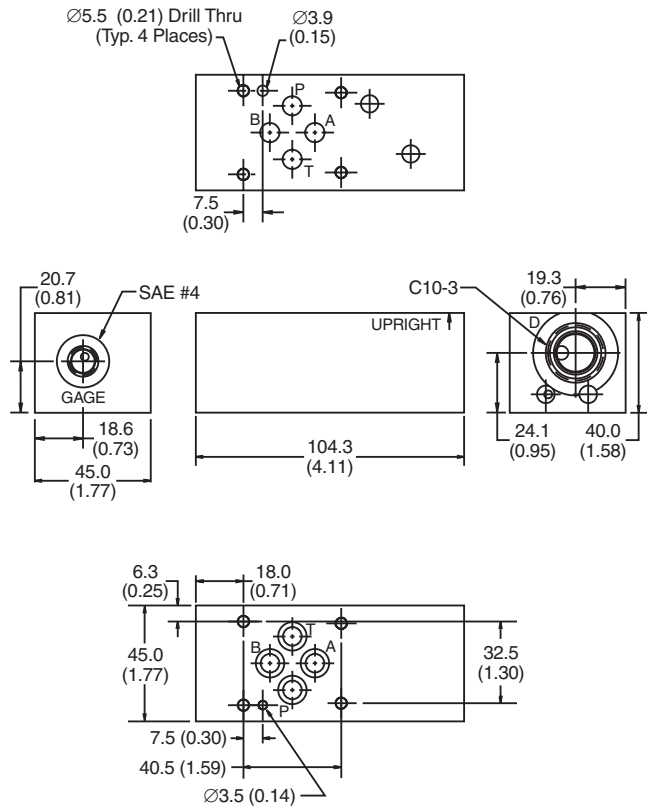
**General Description**

B Port Drain to A D03 Cartpak Body.  
 For additional information see Technical Tips on pages BC1-BC6.

**Body Schematic**



**Dimensions** Millimeters (Inches)



**Ordering Information**



Code	Plug Seals
Omit	Nitrile
V	Fluorocarbon

Code	Body Material
A	Aluminum
S	Steel (Ductile Iron)

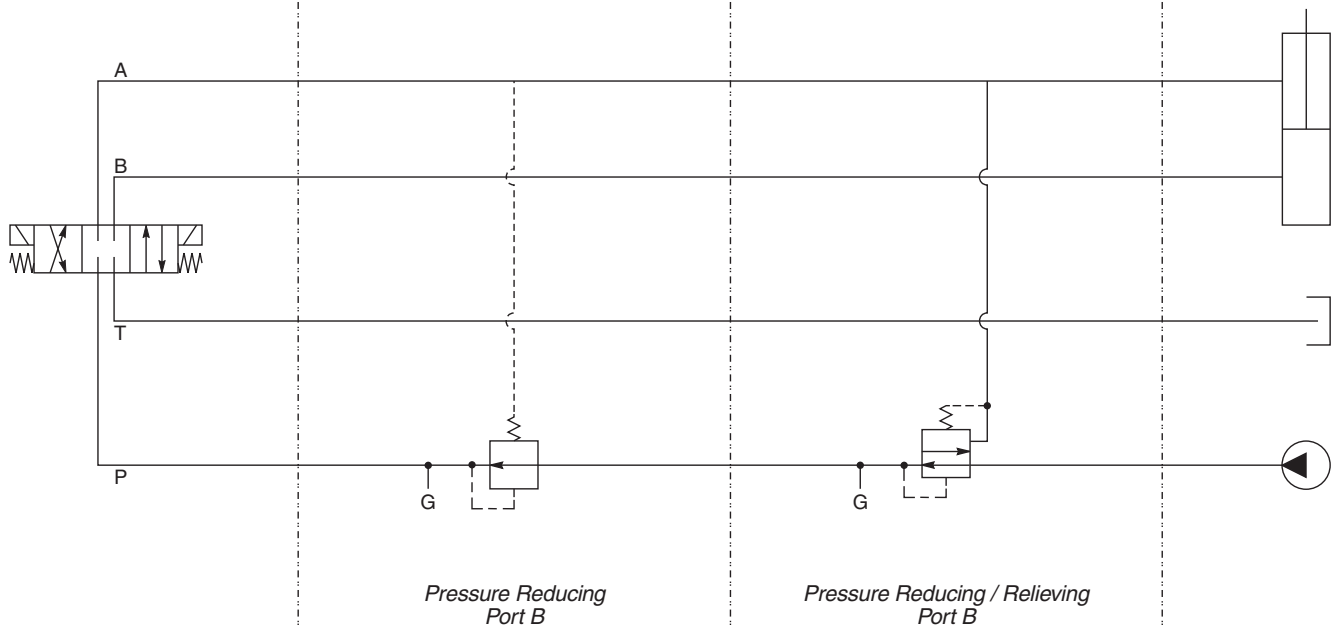
- Body supplied with:**
- Gage Port Plug Installed
  - O-Rings and Drive Pin

**Cavity D:** PRH102

**Direction:** Upright

**Cavity D:** PRH101  
PR103

**Direction:** Upright



*Pressure Reducing Port B*

*Pressure Reducing / Relieving Port B*