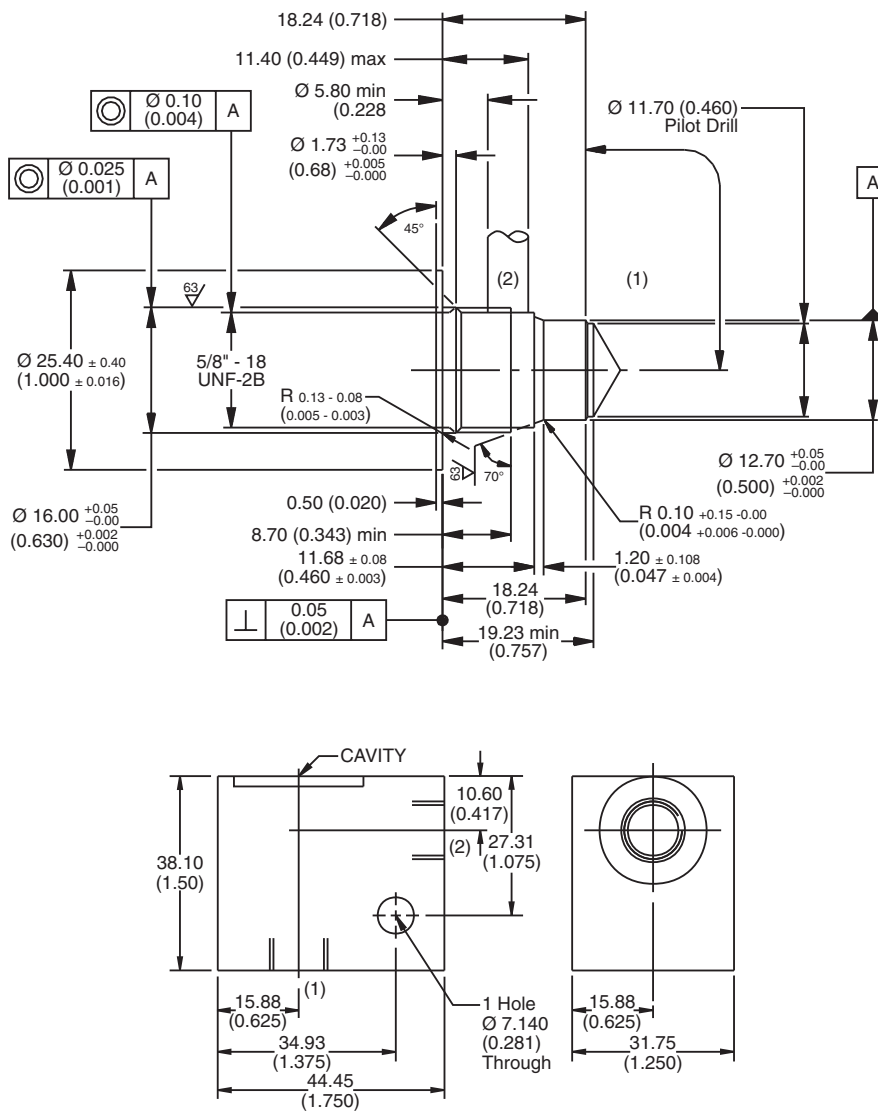
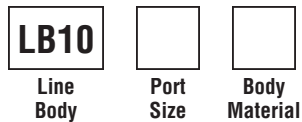


For additional information see Technical Tips on pages BC1-BC6.

Dimensions
 Millimeters (Inches)



Ordering Information



Code	Port Size
324	1/4 SAE

Code	Body Material
A	Aluminum
S	Steel

Cavity Tooling For 2G	
Pilot Drill Ø	11.70 (0.46)
Step Drill	8DS31384
Reamer (Alum)	8RM31092A
Reamer (Steel)	8RM31092S
Counterbore	—
Tap	8TP31223