

Chelsea® 852 Series

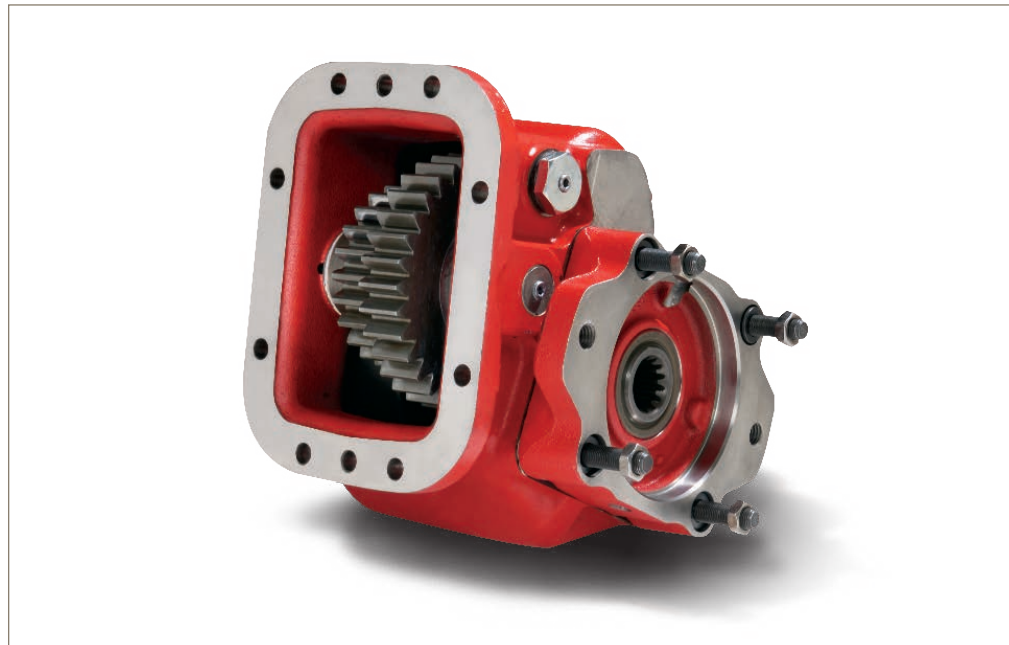
Heavy Duty 8-Bolt PowerShift PTO



Overview:

The Chelsea 852 PTO is another example of why Chelsea PTO technology is the best in the business. This 8-Bolt PowerShift is the workhorse of the Chelsea PTO line. It features a cast iron housing and heavy duty ball bearings on the output shaft, along with the large clutch pack to provide you with a torque rating up to 500 lbs-ft and a long service life in heavy duty applications. Three output options, three internal speed ratios and three shift options make this one versatile PTO. Take advantage of over 65 years of Chelsea PTO technology to increase performance and lower costs.

- Oil Field Application
- Bulk Transporter Trucks
- Fire and Rescue



Contact Information:

Parker Hannifin Corporation
Chelsea Products Division
8225 Hacks Cross Road
Olive Branch, MS 38654 USA

Phone: 1-888-PH4-TRUK
(1-888-744-8785)

Fax: 1-662-895-1069
chelseacustserv@parker.com

www.parker.com/chelsea

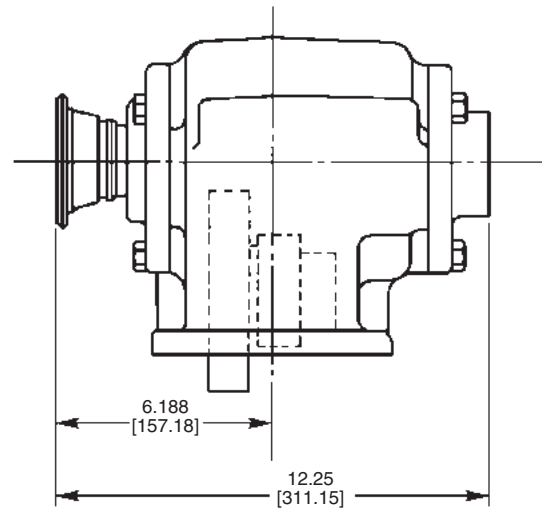
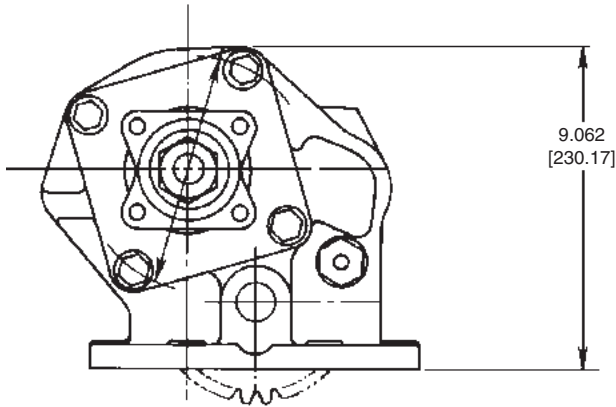
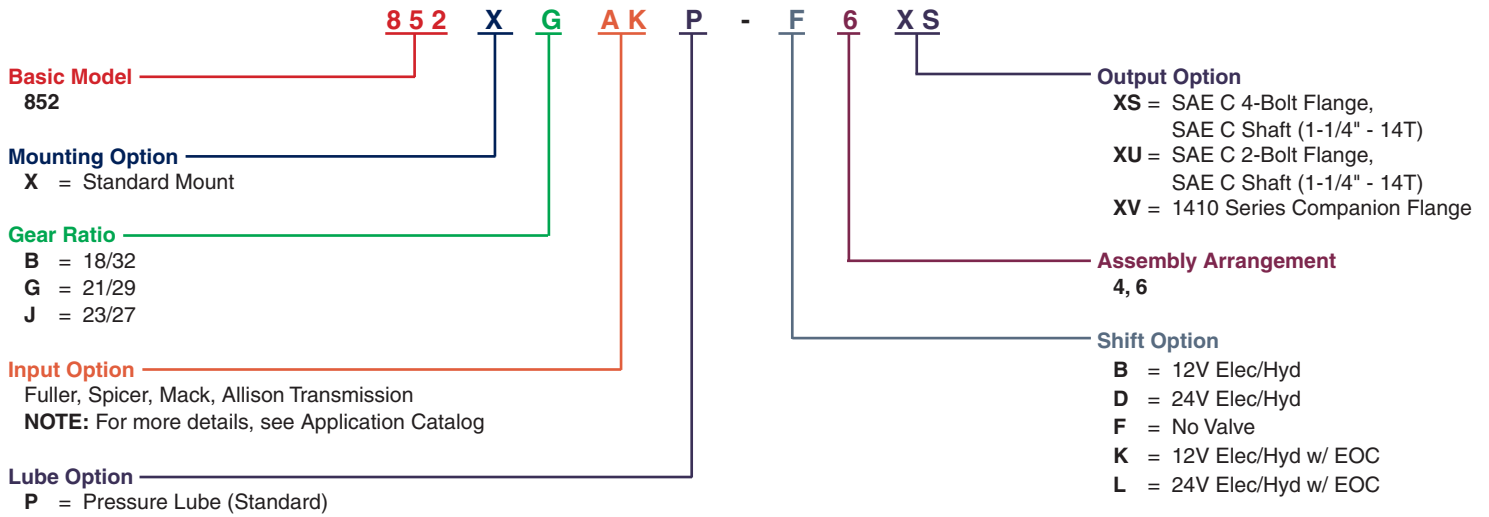
Product Features and Benefits:

- **Power** - Intermittent Torque Rating of up to 500 lbs-ft.
- **Speeds** - Three speed ratios to choose from.
- **Outputs** - Pump flanges to fit most popular hydraulic pumps.
- **Protection** - Pressure lubrication standard.
- **Confidence** - Two Year Warranty.



ENGINEERING YOUR SUCCESS.

852 SERIES POWER TAKE-OFF SPECIFICATIONS AND TECHNICAL DATA



Specifications Chart	Approximate Weight: 88 lbs. [40 kg]		
	852*B	852*G	852*J
Intermittent & Continuous Torque Rating (lbs-ft) [Nm]	500 [678]	500 [678]	500 [678]
HP Rating for Intermittent & Continuous Service			
At 500 RPM of Output Shaft (HP) [Kw]	48 [36]	48 [36]	48 [36]
At 1000 RPM of Output Shaft (HP) [Kw]	95 [71]	95 [71]	95 [71]

© 2021 Parker Hannifin Corporation

Supersedes HY25-0108-B1/US August 2016

HY25-0108-B1/US April 2021



ENGINEERING YOUR SUCCESS.