

Chelsea® 267 Series

Constant Mesh PTO for Allison 3000 and 4000 Series Transmissions



Overview:

Quality knows quality, that is why Allison chose Chelsea to join their engineers in developing PTOs specifically for the Allison World Transmissions. The versatile 267 Series is a constant mesh PTO that exceeds the torque capacity of a 6-Bolt PTO while offering the tighter sealing of a 10-Bolt pattern. The 267 Series is an excellent choice for variable displacement piston pumps used in refuse and snow and ice removal applications. It is available in five speed ratios and multiple output types, including Chelsea's popular 360° rotatable flange. The 267 Series also features the SuperTorque™ option which provides up to 20% more torque capacity than a standard 267 Series.

- Refuse
- Aerial
- Snow & Ice Removal
- Fire & Rescue



Contact Information:

Parker Hannifin Corporation
Chelsea Products Division
8225 Hacks Cross Road
Olive Branch, MS 38654 USA

Phone: 1-888-PH4-TRUK
(1-888-744-8785)

Fax: 1-662-895-1069
chelseacustserv@parker.com

www.parker.com/chelsea

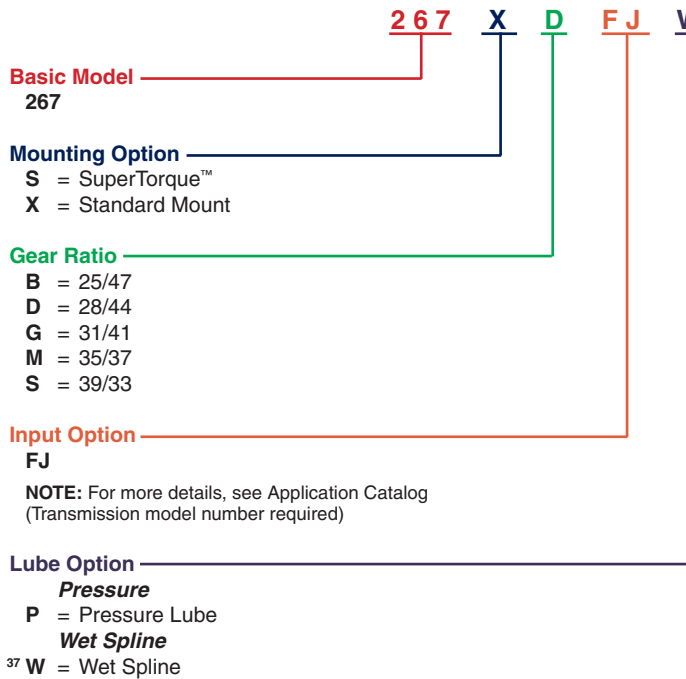


Product Features and Benefits:

- **Constant Mesh** – Applications that require live power at all times
- **Ratios** – Five speed ratios
- **Output Options** – Twenty-Five output options
- **Torque** – SuperTorque™ gears available for 20% higher intermittent torque ratings
- **Protection** – Wet Spline design virtually eliminates spline fretting and can increase shaft life by a factor of ten
- **Backlash** – None to set
- **Confidence** – Two year warranty

ENGINEERING YOUR SUCCESS.

267 SERIES POWER TAKE-OFF SPECIFICATIONS AND TECHNICAL DATA



Output Option

Driveline Output

- XD = Rd Standard Shaft (1-1/4" - 5/16" Key)
- ¹³ XX = 1-1/4" Tapered Output Shaft w/ Keyway

Pump Mount

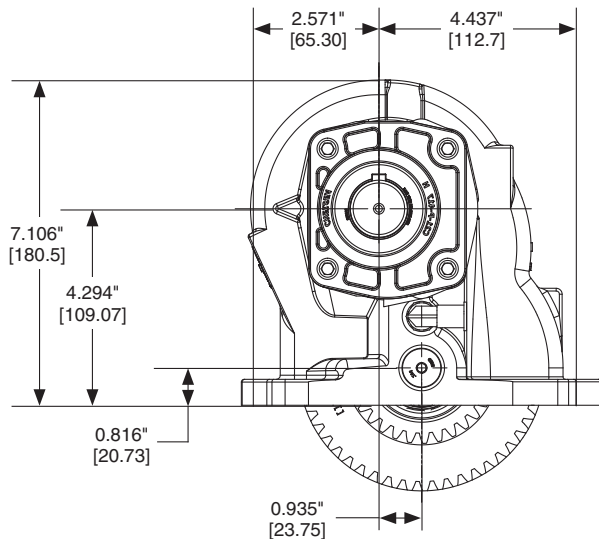
- XE = SAE A 2 or 4-Bolt Flange, SAE A Shaft (5/8" - 9T)
- AK = SAE B 2-Bolt Flange, SAE B Shaft (7/8" - 13T)
- ²³ XK = SAE B 2 or 4-Bolt Flange, SAE B Shaft (7/8" - 13T)
- ⁵⁹ XQ = SAE B 2 or 4-Bolt Flange, SAE B Shaft (7/8" - 13T)
- AF = SAE B 2 or 4-Bolt Flange, SAE BB Shaft (1" - 15T)
- AZ = SAE B 4-Bolt Flange, SAE C Shaft (1-1/4" - 14T)
- GA = Greaseable SAE B 2-Bolt Rotatable Flange, SAE B Shaft (7/8" - 13T)
- GB = Greaseable SAE B 4-Bolt Rotatable Flange, SAE B Shaft (7/8" - 13T)
- GK = Greaseable SAE B 2 or 4-Bolt Flange, SAE B Shaft (7/8" - 13T)
- ⁵⁹ GQ = Greaseable SAE B 2 or 4-Bolt Flange, SAE B Shaft (7/8" - 13T)
- GF = Greaseable SAE B 2 or 4-Bolt Flange, SAE BB Shaft (1" - 15T)
- GR = Greaseable Chelsea Special (Cloverleaf), SAE B Shaft (7/8" - 13T)
- RC = Rotatable SAE A 2-Bolt Flange, SAE A Shaft (5/8" - 9T)
- RD = Rotatable SAE A 2-Bolt Flange, SAE B Shaft (7/8" - 13T)
- RA = Rotatable SAE B 2-Bolt Flange, SAE B Shaft (7/8" - 13T)
- RB = Rotatable SAE B 4-Bolt Flange, SAE B Shaft (7/8" - 13T)
- RK = Rotatable SAE B 2 or 4-Bolt Flange, SAE B Shaft (7/8" - 13T)
- RJ = Rotatable SAE B 2 or 4-Bolt Flange, SAE BB Shaft (1" - 15T)
- RE = Rotatable SAE B 4-Bolt Flange, SAE BB Shaft (1" - 15T)
- RF = Rotatable SAE B 2-Bolt Flange, SAE BB Shaft (1" - 15T)
- RY = Rotatable ISO 7653 Pump Mount DIN 5462 Shaft
- XR = Chelsea Special (Cloverleaf), SAE B Shaft (7/8" - 13T)
- XY = ISO 7653 Pump Mount DIN 5462 Shaft

Assembly Arrangement

- 3 = Right side - bulge down
Left side - bulge up
- 5 = Left side - bulge down
Right side - bulge up

Shift Option

- M = Constant Mesh



Specifications Chart	Approximate Weight: 35 lbs. [16 kg]								
	267*B	267*D	267*G	267*M	267*S	267SB	267SD	267SG	267SS
Intermittent Torque Rating (lbs-ft) [Nm]	335 [454]	335 [454]	300 [407]	265 [359]	250 [339]	402 [545]	402 [545]	360 [488]	265 [359]
HP Rating for Duty									
At 500 RPM of Output Shaft (HP) [Kw]	32 [24]	32 [24]	29 [21]	25 [19]	24 [18]	38 [29]	38 [29]	34 [36]	25 [19]
At 1000 RPM of Output Shaft (HP) [Kw]	64 [48]	64 [48]	57 [43]	50 [38]	48 [36]	77 [57]	77 [57]	69 [51]	50 [38]