

# Parker 3Z Series Motor

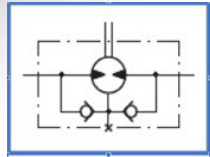
Case drain capable, high flow, low speed, high torque motor



## Value Proposition

Motor flows up to 24 GPM for 3ZE Series and up to 40 GPM for 3ZG Series.

High efficiency (low pressure drop) is ideal for circuits with motors installed in series.



## Contact Information

Parker Hannifin Corporation  
**Pump & Motor Division**  
2745 Snapps Ferry Road  
Greeneville, TN 37745

phone 423 639 8151  
fax 423 787 2418  
[www.parker.com/pmd](http://www.parker.com/pmd)

## Built for Flexibility

- Optional case drain: allows for multiple motors to run efficiently in series, minimizes back pressure on shaft seal
- Low pressure drop across motor
- High pressure shaft seal option available
- Interchangeable with major competitors: comparable Mounting/Ports/Shafts
- Envelope relief valve options

## Market Applications

- Construction Implements
- Horizontal Drilling
- Bulk Feed
- Aerial Lifts
- Specialized Harvesters (sugar cane, potato, peanut)
- Combines (sickles, conveyors, augers)
- Sweepers/Brooms
- Salt & Sand Spreaders



ENGINEERING YOUR SUCCESS.

3ZE Motor Specs		
	PARKER CODE	DESCRIPTION
DISPLACEMENT	080	4.91 in <sup>3</sup> /rev [80,5 cm <sup>3</sup> /rev]
	100	6.10 in <sup>3</sup> /rev [100,0 cm <sup>3</sup> /rev]
	125	7.67 in <sup>3</sup> /rev [125,7 cm <sup>3</sup> /rev]
	160	9.74 in <sup>3</sup> /rev [159,7 cm <sup>3</sup> /rev]
	200	12.20 in <sup>3</sup> /rev [200,0 cm <sup>3</sup> /rev]
	250	15.30 in <sup>3</sup> /rev [250,0 cm <sup>3</sup> /rev]
	315	19.20 in <sup>3</sup> /rev [314,9 cm <sup>3</sup> /rev]
	400	24.20 in <sup>3</sup> /rev [397,0 cm <sup>3</sup> /rev]
	475	28.96 in <sup>3</sup> /rev [474,6 cm <sup>3</sup> /rev]
	525	31.88 in <sup>3</sup> /rev [522,7 cm <sup>3</sup> /rev]
HOUSING	565	34.47 in <sup>3</sup> /rev [564,9 cm <sup>3</sup> /rev]
	A	SAE A 2 Bolt
	B	SAE B 2 Bolt
	M	Magneto, 4 Bolt
	V	SAE A 4 Bolt
PORTING	W	Wheel Mount, 4.25" Pilot
	B	Staggered Side Ports, 2x7/8-14 UNF, O-ring, 7/16-20 UNF
	G	Staggered Side Ports, 2xM22x1,5; M14x1,5; Metric Thread, ISO 262
SHAFT	A	Rear Ports, 2x7/8-14 UNF, O-ring, 7/16-20 UNF
	4	180° Apart Ports, 2x 1-1/16 -12 UN, O-ring, 9/16-18 UNF
	01	1" SAE 6B Spline
SHAFT SEAL	02	1" Straight Key
	03	1.25" Straight Key
	08	1.25" J501 Tapered
	61	1.25", 14T Spline
SHAFT SEAL	L	Low Pressure Seal, Standard Temp
	H	High Pressure Seal, High Temp



3ZG Motor Specs		
	PARKER CODE	DESCRIPTION
DISPLACEMENT	160	9.83 in <sup>3</sup> /rev [61.6 cm <sup>3</sup> /rev]
	200	12.29 in <sup>3</sup> /rev [201.4 cm <sup>3</sup> /rev]
	250	15.36 in <sup>3</sup> /rev [251.8 cm <sup>3</sup> /rev]
	315	19.9 in <sup>3</sup> /rev [326.3 cm <sup>3</sup> /rev]
	400	25.06 in <sup>3</sup> /rev [410.9 cm <sup>3</sup> /rev]
	500	31.95 in <sup>3</sup> /rev [523.6 cm <sup>3</sup> /rev]
	630	38.52 in <sup>3</sup> /rev [631.2 cm <sup>3</sup> /rev]
	725	44.2 in <sup>3</sup> /rev [724.3 cm <sup>3</sup> /rev]
HOUSING	K	SAE C, 4 Bolt
	T	Wheel Mount
PORTING	4	Staggered Side Ports, 2x 1-1/16-12 UN, O-ring, 9/16-18 UNF
	7	Rear Ports, 2x 1-1/16 -12 UN, O-ring, 9/16-18 UNF
SHAFT	32	1.5" Straight Key
	36	1.5", 17T Spline
	37	1.5", 17T Spline, Short
	61	1.25", 14T Spline
	63	1.75" J501 Tapered
SHAFT SEAL	64	40 mm Straight, Parallel Key
	L	Low Pressure Seal, Standard Temp
	H	High Pressure Seal, High Temp



3Z Motor Options	
CODE	DESCRIPTION
ZAAA	Black Paint
ZAAC	Black Paint, Reverse Rotation
ZAAE	Black Paint, 210 Bar Relief, Reverse Rotation
ZAAF	Black Paint, 210 Bar Relief
ZAAG	Black Paint, Speed Sensor
ZAAI	Black Paint, Speed Sensor, Reverse Rotation

**⚠ WARNING**

This product can expose you to chemicals including lead and DEHP, which are known to the State of California to cause cancer, and birth defects or other reproductive harm. For more information go to [www.p65warnings.ca.gov](http://www.p65warnings.ca.gov)

