

# Parker CDS-125 Force Sensor

For Ground Engaging Machinery,  
Sweeping and Clamping Applications



## Compact force sensor built to withstand the most challenging environments

The Parker down force sensor is designed for easy adaptability to existing equipment. In addition to its robust design, the CDS-125 also features diagnostic output clamps. Our standard offering has a diameter of 1.25" and 3 pin Deutsch connector

Typical applications include:

- Agriculture ground engaging equipment
- Sweeping applications
- Clamping applications
- Other precision force applications

## Product Features:

### Standard (168607ECD)

Full scale load: 1500 lbf

Overload Protection: 3500 lbf

Cable: 50 in.

Connector System: DTM04-3P

### Environmental

Operating Temperature: -20°C to 65°C

Thermally compensated temperature: 0°C to 40°C

Storage Temperature: -40°C to 85°C

Operating humidity: 0-100% RH

Ingress Protection: IP67, IP69K per ISO20653

### Electrical Characteristics

Supply Voltage: 5V regulated supply (+/- 10%)

Current consumption: 15mA max

Ratiometric Output: 10% to 90% Supply (0.5V to 4.5V at 5V)

Total Absolute Output Error: +/- 3% FS

Ground Repeatability: -15 +15 lbf

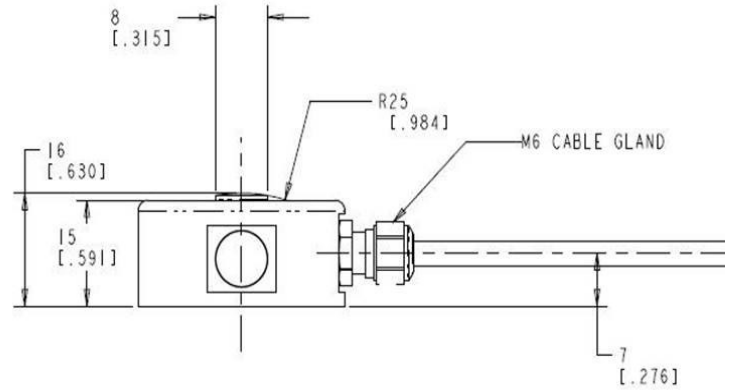
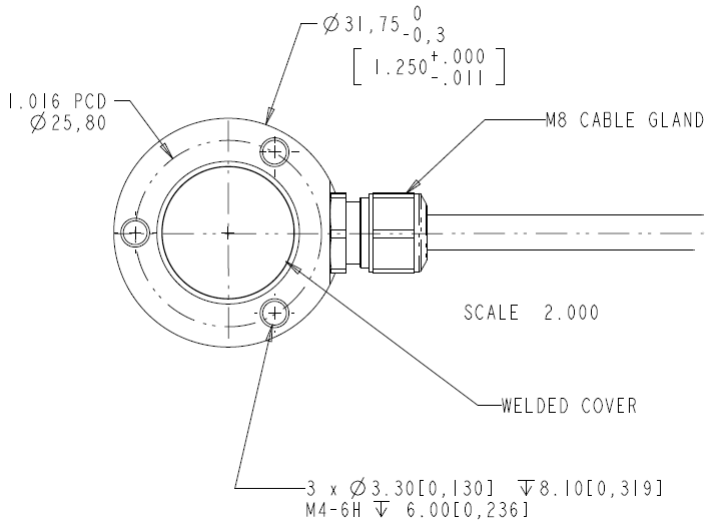
Impedance: Isolation between sensor body & circuits >2000 MOHM @50VDC

Response time <10msec

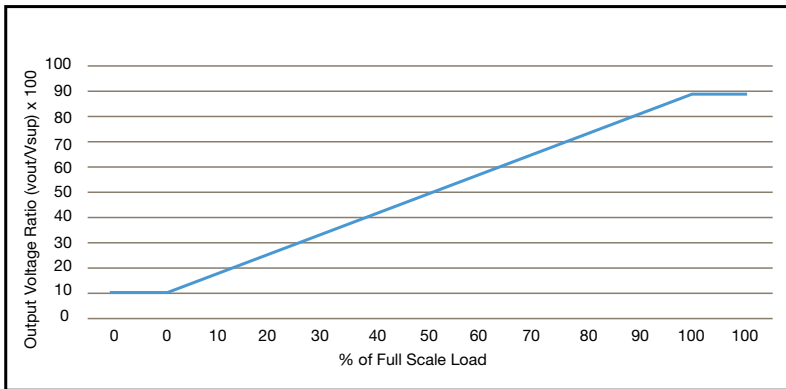


ENGINEERING YOUR SUCCESS.

# Specifications



## Output vs Load Transfer Function Normal Operation



## Connector

Connector	Pin	Wire Color	Function
Deutsch DTM04-3P	1	Red	Supply
	2	Black	Ground
	3	White	Signal

