

A

General Description

Series D6P directional control valves are 5-chamber, pilot operated valves. They are available in 2 or 3-position styles. These valves are manifold or subplate mounted, and conform to NFPA's D08, CETOP 8 mounting patterns.

Features

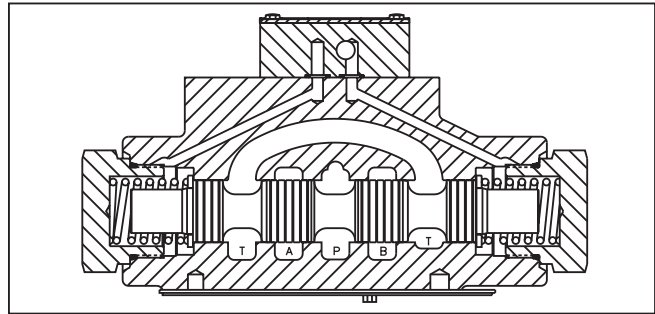
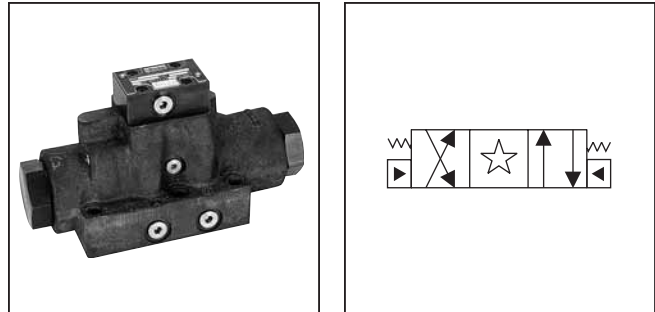
- Low pressure drop design.
- Hardened spools provide long life.
- Fast response option available.

Specifications

Mounting Pattern	NFPA D08, CETOP 8, NG25
Max. Operating Press.	207 Bar (3000 PSI)
Max. Tank Line Press.	207 Bar (3000 PSI)
Max. Drain Pressure	207 Bar (3000 PSI)
Min. Pilot Pressure	5.1 Bar* (75 PSI)
Max. Pilot Pressure	207 Bar (3000 PSI)
Nominal Flow	189 Liters/Min (50 GPM)
Maximum Flow	See Reference Chart

* 6.9 Bar (100 PSI) for 2, 8, 9 & 12 spools

For flow path, pilot drain and pilot pressure details, see Installation Information.



Response Time

Response time will vary with pilot line size, pilot line length, pilot pressure shift time and flow capacity of the control valve.

Shift Volume

The pilot chamber requires a volume of 0.54 in³ for center to end and 1.08 in³ for end to end.

Ordering Information

<div style="border: 1px solid black; padding: 2px; width: 30px; margin: 0 auto;">D</div> Directional Control Valve	<div style="border: 1px solid black; padding: 2px; width: 30px; margin: 0 auto;">6</div> Basic Valve	<div style="border: 1px solid black; padding: 2px; width: 30px; margin: 0 auto;">P</div> Hydraulic Pilot	<div style="border: 1px solid black; padding: 2px; width: 30px; margin: 0 auto;"></div> Spool	<div style="border: 1px solid black; padding: 2px; width: 30px; margin: 0 auto;"></div> Style	<div style="border: 1px solid black; padding: 2px; width: 30px; margin: 0 auto;"></div> Pilot Supply and Drain	<div style="border: 1px solid black; padding: 2px; width: 30px; margin: 0 auto;"></div> Seal	<div style="border: 1px solid black; padding: 2px; width: 30px; margin: 0 auto;"></div> Valve Variations	<div style="border: 1px solid black; padding: 2px; width: 30px; margin: 0 auto;"></div> Design Series
--	--	--	---	---	--	--	--	---

<div style="border: 1px solid black; padding: 2px; width: 100px; margin: 0 auto;">NFPA D08 CETOP 8</div>	<div style="border: 1px solid black; padding: 2px; width: 100px; margin: 0 auto;">Code Type N Nitrile V Fluorocarbon</div>	<div style="border: 1px solid black; padding: 2px; width: 100px; margin: 0 auto;">Code Description 2 Ext. Pilot — Ext. Drain 5# Ext. Pilot — Int. Drain</div> <p># Available in "B" & "H" styles only.</p>	<div style="border: 1px solid black; padding: 2px; width: 100px; margin: 0 auto;">Code Description 7 Pilot Choke — Meter Out 8 Stroke Adj. 'B' End 9 Stroke Adj. 'A' End 20 Fast Response 60 Pilot Choke — Meter In 89 Stroke Adj. 'A' & 'B' Ends</div>
--	--	--	---

<div style="border: 1px solid black; padding: 2px; width: 100px; margin: 0 auto;">Code Symbol Code Symbol</div>	<div style="border: 1px solid black; padding: 2px; width: 100px; margin: 0 auto;">Code Description</div>
<div style="border: 1px solid black; padding: 2px; width: 100px; margin: 0 auto;">1 </div>	<div style="border: 1px solid black; padding: 2px; width: 100px; margin: 0 auto;">8* 9** </div>
<div style="border: 1px solid black; padding: 2px; width: 100px; margin: 0 auto;">2 </div>	<div style="border: 1px solid black; padding: 2px; width: 100px; margin: 0 auto;">11 </div>
<div style="border: 1px solid black; padding: 2px; width: 100px; margin: 0 auto;">4 </div>	<div style="border: 1px solid black; padding: 2px; width: 100px; margin: 0 auto;">12 </div>

* 8 spool has closed crossover.
 ** 9 spool has open crossover.

Valve schematic symbols are per NFPA/ANSI standards, providing flow P to A when energizing operator X. Note operators reverse sides for #8 and #9 spools. See installation information for details.

Valve Weight: 11.0 kg (24.2 lbs.)
Standard Bolt Kit: BK227
Metric Bolt Kit: BKM227

Code	Description	Symbol
B	Single operator, 2 position, spring offset. P to A and B to T in offset position.	
C	Double operator, 3 position, spring centered.	
H	Single operator, 2 position, spring offset. P to B and A to T in offset position.	

This condition varies with spool code.

Bold: Designates Tier I products and options.

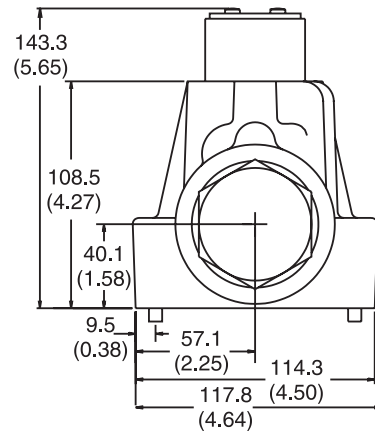
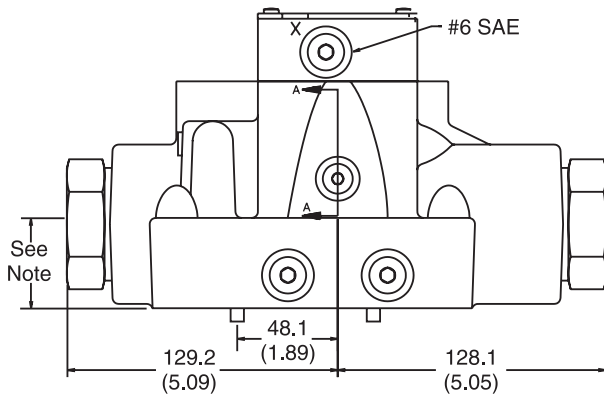
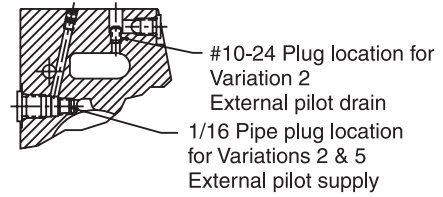
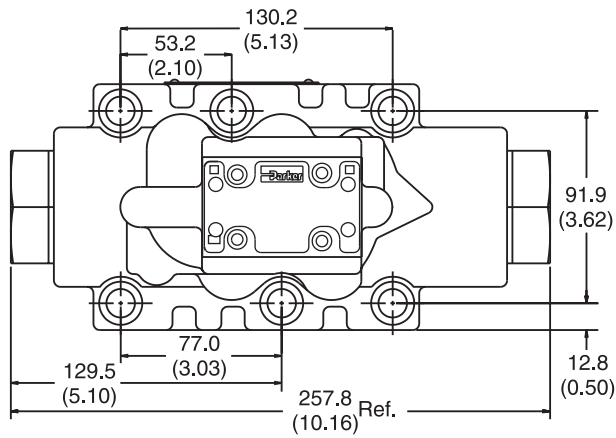
Non-Bold: Designates Tier II products and options. These products will have longer lead times.

D61.indd, dd

Inch equivalents for millimeter dimensions are shown in (**)

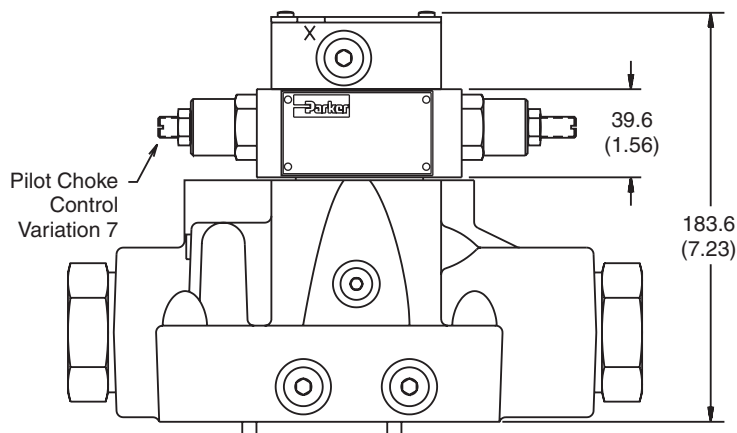
A

Standard Pilot Operated



Note: 41.9mm (1.65") from bottom of bolt hole counterbore to bottom of valve.

Pilot Operated with Pilot Choke Control



Note: 41.9mm (1.65") from bottom of bolt hole counterbore to bottom of valve.