

SCFF Series

Screw-to-Connect 3/8" up to 1"



Technical Description

Heavy duty Screw-to-Connect type of couplings for demanding applications with flat face valves to avoid spillage and protect the environment. Best in class flow and burst values, integrated swivel function. Quicker connection with double started ACME thread and available with pressure eliminator in plug on request.

Advantages

- Good resistance to vibrations and mechanical stress
- No fluid loss during connection and disconnection
- Efficient and safe
- Quick and easy connection
- Locking system prevents accidental disconnection
- Connectable up to full working pressure with pressure eliminator

Applications

Mobile and construction equipment: Cranes, drilling machine, excavators, thumbs
Oil field: Wellhead drives

Working Pressure

3/8" up to 550 bar
1/2" up to 500 bar
3/4" up to 500 bar
1" up to 420 bar



Working Temperature

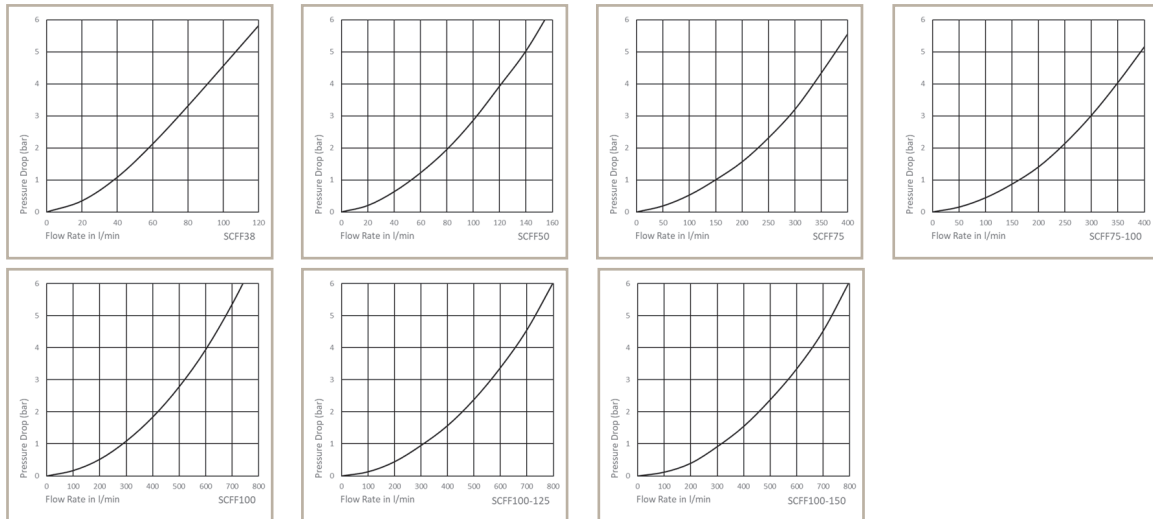
-30°C up to +100°C (NBR) depending on the medium. Special seals are available on request.

Material Coupling	Standard / Pressure Eliminator
Coupling Body	Steel, ZnNi plated
Sleeve	Steel, ZnNi plated
Back-up Ring	PTFE
Valve	Steel, ZnNi plated
Springs	AISI 301
Swivel Balls	Steel
Seals	NBR
Valve Holder	Steel, ZnCr3 plated
Plug	Standard / Pressure Eliminator
Plug Body	Steel, ZnNi plated
Valve	Steel, ZnNi plated
Springs	AISI 301
Seals	NBR/PUR
Valve Holder	Steel, ZnCr3 plated



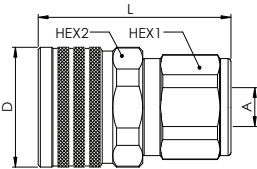
ENGINEERING YOUR SUCCESS.

Pressure Drop Curves



Couplings

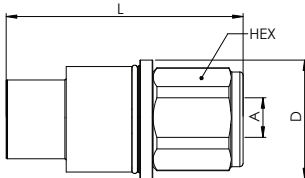
SCFF-Series



Body Size	Connection A	Hex 1 mm	Hex 2 mm	L mm	D mm	Working Press. connect. in bar	Part Number
3/8"	G 3/8	36	40	75,5	42	550	SCFF3810
1/2"	G 1/2	40	45	80,5	47	500	SCFF5010
3/4"	G 3/4	50	55	96,5	58	500	SCFF7510
3/4"	G 1	50	55	104,5	58	500	SCFF7510-100
1"	G 1	65	75	129,0	80	420	SCFF10010
1"	G 1 1/4	65	75	129,0	80	420	SCFF10010-125
1"	G 1 1/2	65	75	129,0	80	420	SCFF10010-150

Plugs

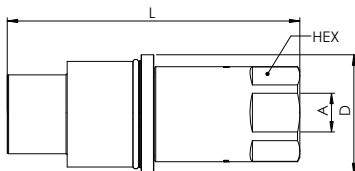
SCFF-Series



Body Size	Connection A	Hex mm	Hex mm	L mm	D mm	Working Press. connect. in bar	Part Number
3/8"	G 3/8	32		79	40	550	SCFF3820
1/2"	G 1/2	36		86	43	500	SCFF5020
3/4"	G 3/4	46		110	55	500	SCFF7520
3/4"	G 1	46		115	55	500	SCFF7520-100
1"	G 1	60		150	75	420	SCFF10020
1"	G 1 1/4	60		150	75	420	SCFF10020-125
1"	G 1 1/2	60		152	75	420	SCFF10020-150

Plugs with pressure eliminator

SCFF-Series



Body Size	Connection A	Hex mm	Hex mm	L mm	D mm	Working Press. connect. in bar	Part Number
3/8"	G 3/8	32		108	40	550	SCFF3821
1/2"	G 1/2	36		117	43	500	SCFF5021
3/4"	G 3/4	46		148	55	500	SCFF7521
3/4"	G 1	46		148	55	500	SCFF7521-100
1"	G 1	60		185	75	420	SCFF10021
1"	G 1 1/4	60		189	75	420	SCFF10021-125
1"	G 1 1/2	60		194	75	420	SCFF10021-150