

General Description

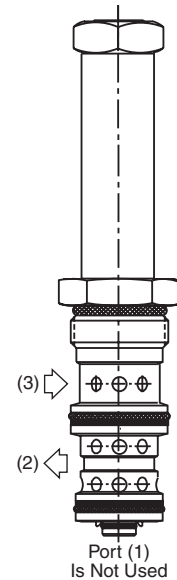
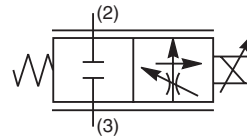
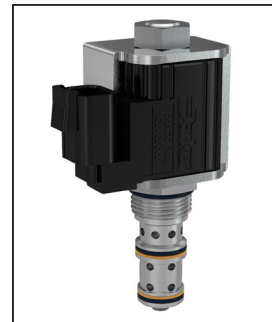
2 Way, Normally Closed, Proportional Flow Regulator Valve. Pressure Compensated.
 For additional information see Technical Tips on pages PV2-PV5.

Features

- One piece cartridge housing ensures internal concentricity
- Coil: Waterproof, hermetically sealed, requires no O’Rings; Symmetrical coil can be reversed without affecting performance.
- Nonmagnetic spool and housing assembly
- Factory-adjusted low variation option (Model “L”) is available for applications where low variation of flow from valve to valve is essential at a given current.

Specifications

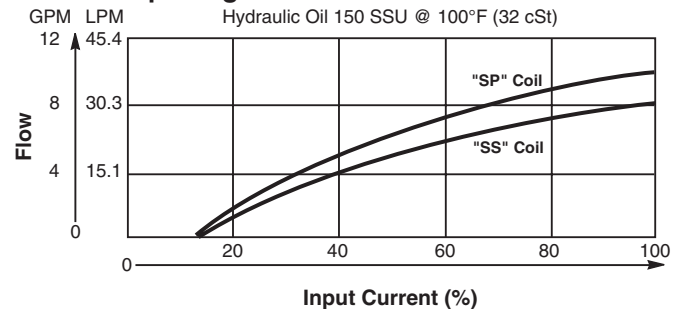
Rated Flow	21 30 LPM (8 GPM) Standard ('SS' Coil) 21 36 LPM (9.5 GPM) High Flow ('SP' Coil)
Maximum Input Pressure at Port 2	210 Bar (3000 PSI)
Minimum Pressure Differential	21 13.8 Bar (200 PSI) Standard 21 20.7 Bar (300 PSI) High Flow
Maximum Internal Leakage	780 cc (46 cu. in.) @ 210 Bar (3000 PSI)
Hysteresis @ 100 Hz PWM	7%
Cracking Pressure	25% of Input Signal
Variation of Flow @ 35% of Rated Current	Model “L” ±7% Of Rated Flow
Cartridge Material	All parts steel. All operating parts hardened steel.
Operating Temp. Range/Seals	-34°C to +121°C (Nitrile) (-30°F to +250°F) -26°C to +204°C (Fluorocarbon) (-15°F to +400°F)
Fluid Compatibility/Viscosity	Mineral-based or synthetic with lubricating properties at viscosities of 45 to 2000 SSU (6 to 420 cSt)
Filtration	ISO-4406 18/16/13, SAE Class 4
Approx. Weight	0.13 kg (0.28 lbs.)
Cavity	3X (See BC Section for more details)



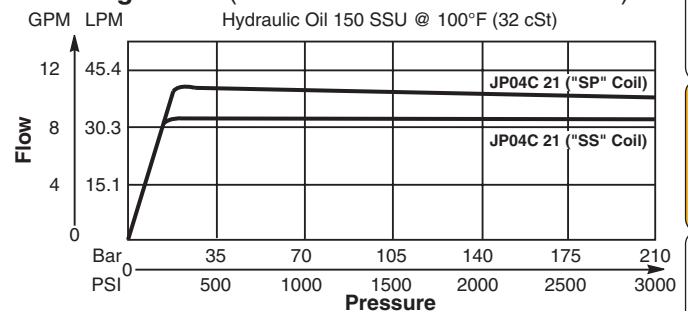
Performance Curves

▲ PWM Current Regulator Recommended

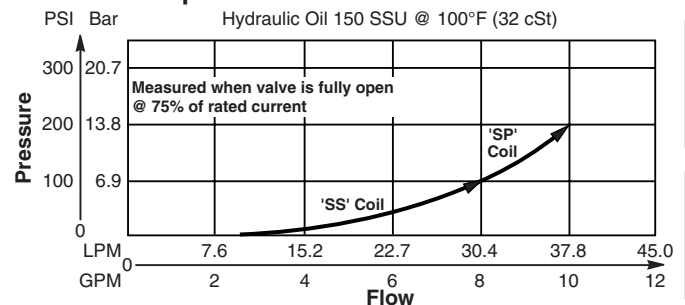
Flow vs. Input Signal



Flow Regulation (Measured 75% of Rated Current)

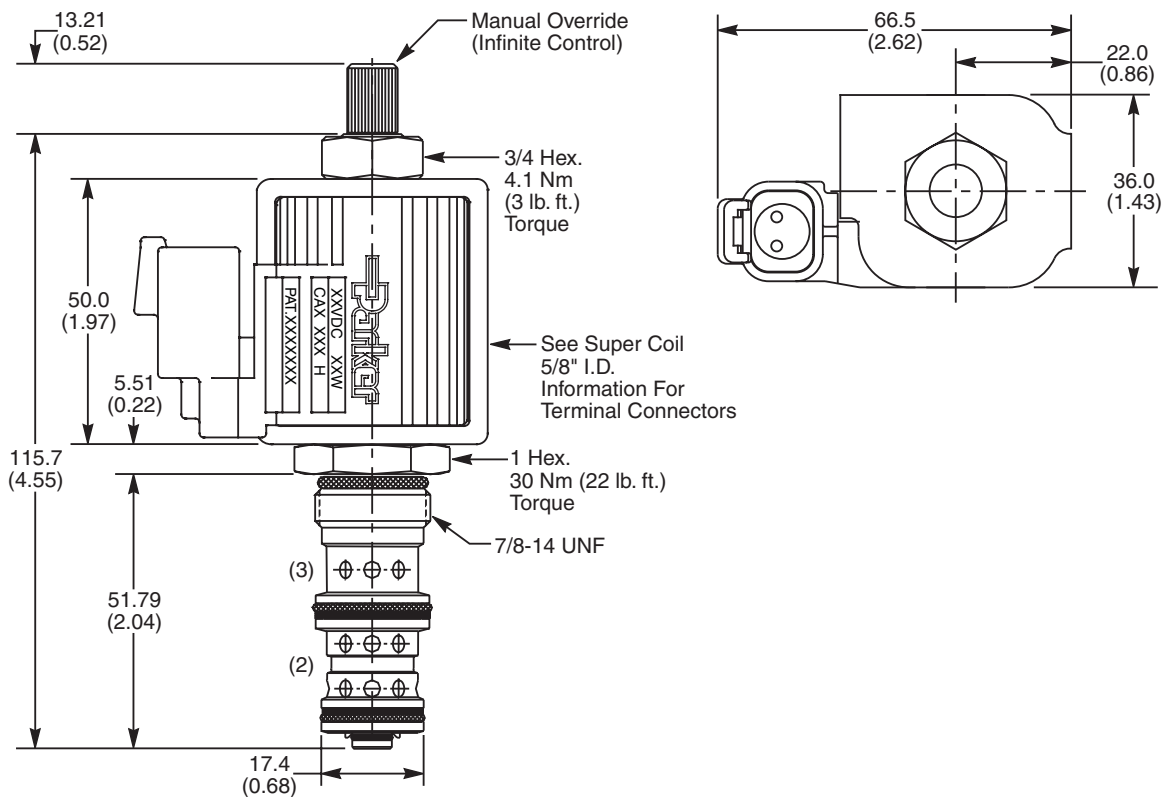


Pressure Drop vs. Flow



CV
Check Valves
SH
Shuttle Valves
LM
Load/Motor Controls
FC
Flow Controls
PC
Pressure Controls
LE
Logic Elements
DC
Directional Controls
SV
Solenoid Valves
PV
Proportional Valves
CE
Coils & Electronics
BC
Bodies & Cavities
TD
Technical Data

Dimensions Millimeters (Inches)



Ordering Information

JP04C	21			N	L
10 Size Proportional Valve	Style	Override Option	Filter Screen	Seals	Flow Variation

Highlighted represents preferred options that offer the shortest lead times. Other options may be available, but at extended lead times.

Coil(s) sold separately. Please see section CE of this catalog, 5/8" Super-Coil (CA series), for ordering information.

Code	Style (Maximum Regulated Flow)
21	Standard ('SS' Coil) 30 LPM (8 GPM)
21	High Flow ('SP' Coil) 36 LPM (9.5 GPM)

Code	Seals
N	Nitrile

*Order Bodies Separately
 See section BC*

LB10	553	S
Line Body	Porting	Body Material

Code	Override Option
0	Not Required
5	Infinite Control M.O.

Code	Flow Variation
L	Low Variation (±7% of Rated Flow)

Code	Porting
553	1/2" SAE

Code	Filter Screen
0	Not Available
1	60 Mesh Screen on Port 2

Kit	Part Number
Nitrile Seal	SK30106N-1
Fluorocarbon Seal	SK30106V-1

Code	Body Material
S	Steel (5000 PSI)

CV
Check Valves
SH
Shuttle Valves
LM
Load/Motor Controls
FC
Flow Controls
PC
Pressure Controls
LE
Logic Elements
DC
Directional Controls
SV
Solenoid Valves
PV
Proportional Valves
CE
Coils & Electronics
BC
Bodies & Cavities
TD
Technical Data