

General Description

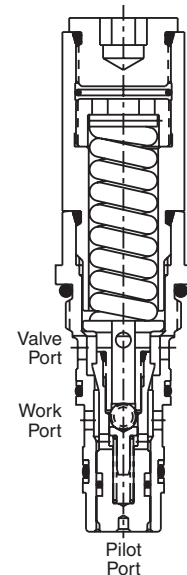
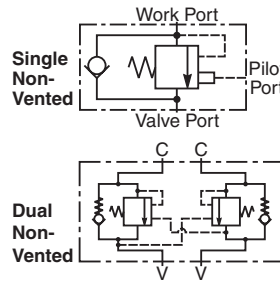
Threaded Cartridge Style Counterbalance Valve.
 For additional information see Technical Tips
 on pages LM2-LM5.

Features

- Conical Poppet design provides longer metering stroke for stable operation
- Hardened seat provides reliable load holding
- External vent option available for high back pressure applications
- Tamper resistant cap for added safety and security
- Various pilot ratios available for application flexibility
- Unique cavity prevents other valves from being “accidentally” installed

Specifications

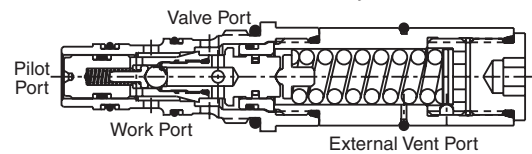
Rated Flow	37.5 LPM (10 GPM)
Maximum Inlet Pressure	350 Bar (5000 PSI)
Leakage at 150 SSU (32 cSt)	5 drops/min. (0.33 cc/min) @ 80% of thermal crack pressure
Cartridge Material	All parts steel. All operating parts hardened steel.
Operating Temp. Range/Seals	-34°C to +121°C (Nitrile) (-30°F to +250°F) -26°C to +204°C (Fluorocarbon) (-15°F to +400°F)
Fluid Compatibility/Viscosity	Mineral-based or synthetic with lubricating properties at viscosities of 45 to 2000 SSU (6 to 420 cSt)
Filtration	ISO-4406 18/16/13, SAE Class 4
Approx. Weight	0.38 kg (0.88 lbs.)
Cavity	CDD-1010 (See BC Section for more details)



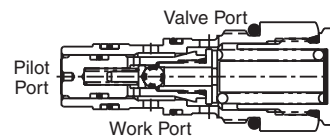
MHC-010-S*S* Non-Vented Counterbalance Adjustable

Construction

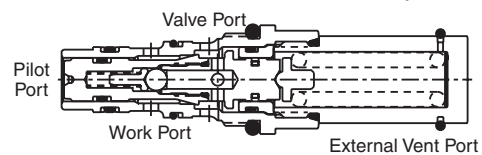
MHC-010-V*S* Vented Counterbalance Adjustable



MHC-010-S*N* Non-Vented Counterbalance Non-Adjustable

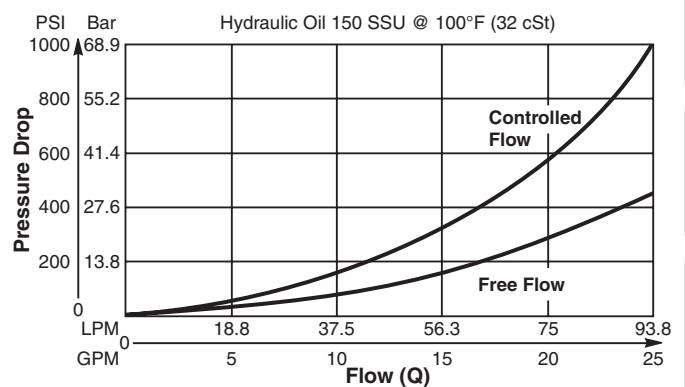


MHC-010-V*N* Vented Counterbalance Non-Adjustable



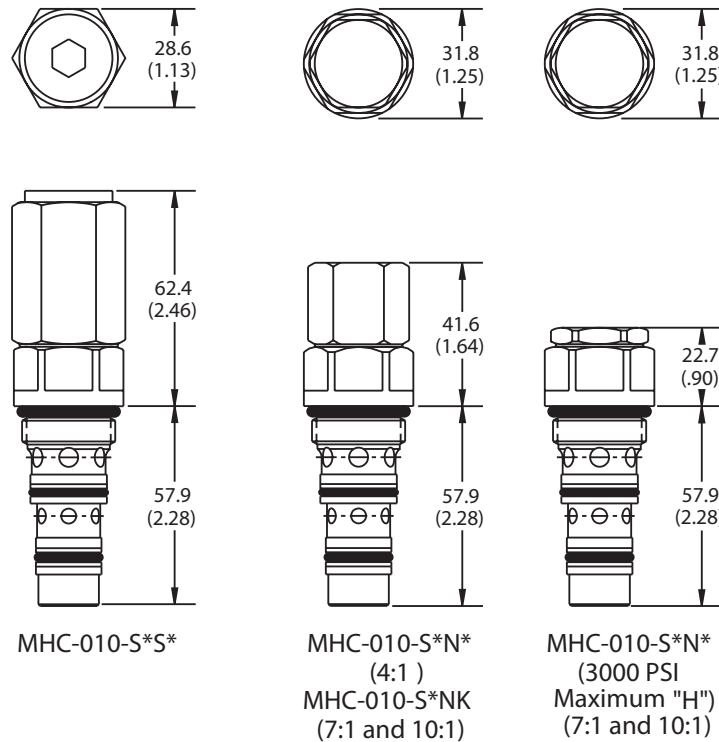
Performance Curve

Flow vs. Pressure Drop (Through cartridge only)



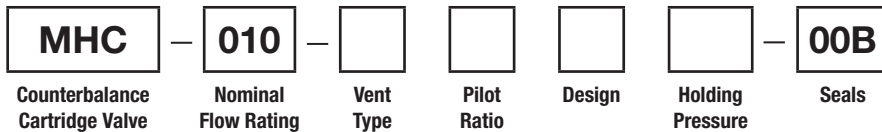
CV
Check Valves
SH
Shuttle Valves
LM
Load/Motor Controls
FC
Flow Controls
PC
Pressure Controls
LE
Logic Elements
DC
Directional Controls
SV
Solenoid Valves
PV
Proportional Valves
CE
Coils & Electronics
BC
Bodies & Cavities
TD
Technical Data

Dimensions Millimeters (Inches)



Torque Values
 68-75 Nm (50-55 lb. ft.)
Typical for all

Ordering Information



Highlighted represents preferred options that offer the shortest lead times. Other options may be available, but at extended lead times.

Code	Nominal Flow Rating
010	37.5 LPM (10 GPM)

Code	Vent Type
S	Standard (non-vented)
V	Vented

Code	Pilot Ratio
F	7 : 1 (Standard)
J	10 : 1

Code	Design
S	Standard (adjustable)
N	Shimmed (non-adjustable)

Code	Holding Pressure
H	210 Bar (3000 PSI) Standard version
K	350 Bar (5000 PSI) Standard Setting: 7:1 and 10:1 only Shim version only

Code	Seals
00B	Nitrile

Kit	Part Number
Nitrile Seal	711922
Fluorocarbon Seal	711825

Order Bodies Separately
 See section BC



Code	Body Type
A	Single

Code	Port Size
53	SAE-10 through port

- CV
Check Valves
- SH
Shuttle Valves
- LM
Load/Motor Controls
- FC
Flow Controls
- PC
Pressure Controls
- LE
Logic Elements
- DC
Directional Controls
- SV
Solenoid Valves
- PV
Proportional Valves
- CE
Coils & Electronics
- BC
Bodies & Cavities
- TD
Technical Data