

### General Description

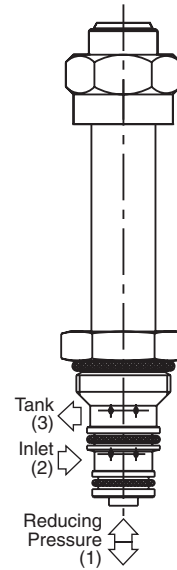
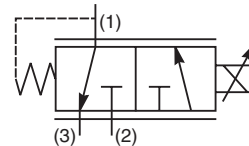
3 Way, 2 Position, Proportional Pressure Reducing Valve. Bottom Cylinder Port. For additional information see Technical Tips on pages PV1-PV6.

### Features

- Designed for pilot control of directional valves
- Low Hysteresis
- One piece cartridge housing ensures internal concentricity
- Coil: Waterproof, hermetically sealed, requires no O’Rings; Symmetrical coil can be reversed without affecting performance.

### Specifications

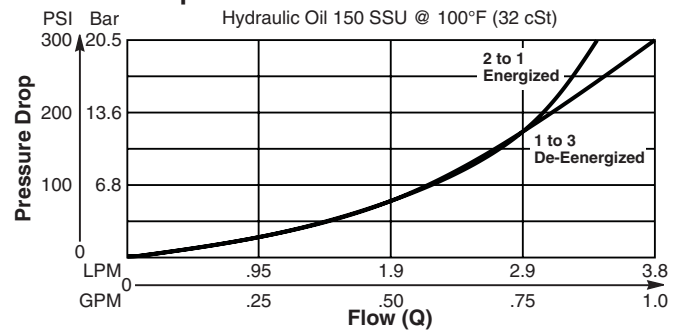
Rated Flow (At 70 PSI ΔP)	1.9 LPM (0.5 GPM)
Max. Regulated Pressure @75% Current	<b>Standard</b> 17 Bar (250 PSI) <b>High Pressure</b> 22 Bar (320 PSI)
Max. Input Pressure At Port 1	210 Bar (3000 PSI)
Max. Tank Pressure	30 Bar (440 PSI)
Max. Drainage Flow in Regulating Zone	5 cc/min. When De-Energized 200 cc/min. In Regulating Zone At 68 Bar (1000 PSI) Input Pressure
Hysteresis @ 120 Hz PWM	2%
Dead End Response Time	t on = 30 ms t off = 10 ms At Step Signal 0 To 75% of Nominal Voltage
Cartridge Material	All parts steel. All operating parts hardened steel.
Operating Temp. Range/Seals	-34°C to +121°C (Nitrile) (-30°F to +250°F) -26°C to +204°C (Fluorocarbon) (-15°F to +400°F)
Fluid Compatibility/Viscosity	Mineral-based or synthetic with lubricating properties at viscosities of 45 to 2000 SSU (6 to 420 cSt)
Filtration	ISO-4406 18/16/13, SAE Class 4
Approx. Weight	0.08 kg (0.17 lbs.)
Cavity	54-1 (See BC Section for more details)



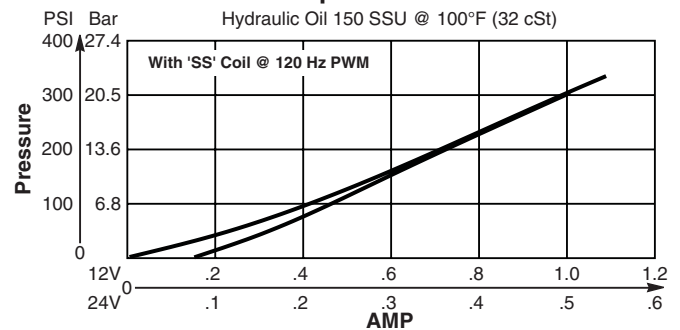
### Performance Curves

▲ PWM Current Regulator Recommended

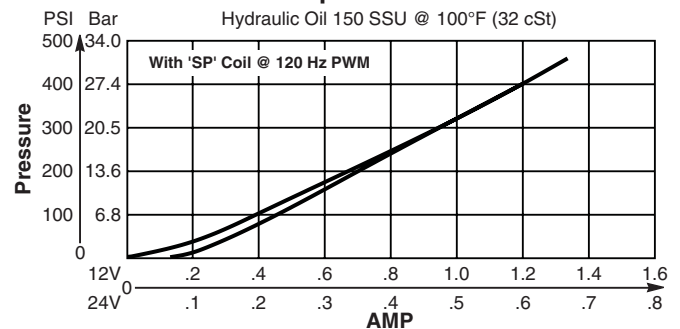
#### Pressure Drop vs. Flow



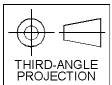
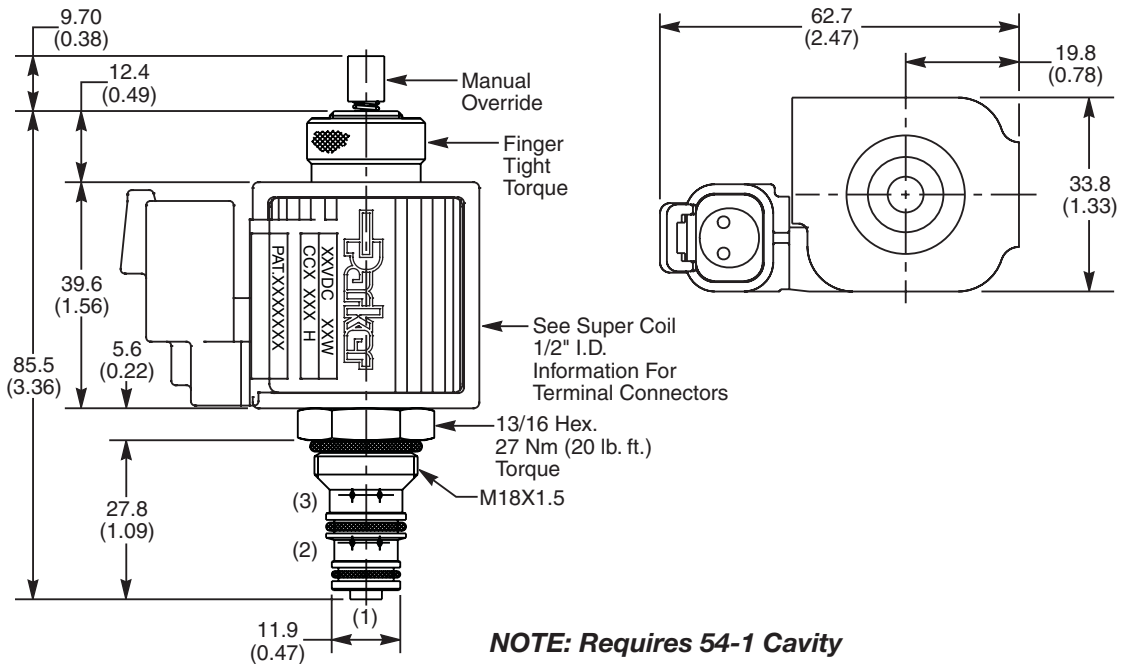
#### Pressure @ Port 1 vs. Input Current



#### Pressure @ Port 1 vs. Input Current



**Dimensions** Millimeters (Inches)



**Ordering Information**

<b>GP01</b>	<b>30</b>			
08 Size Proportional Valve	Style	Override Option	Filter Screen	Seals

**Highlighted** represents preferred options that offer the shortest lead times. Other options may be available, but at extended lead times.

**Coil(s) sold separately.** Please see section CE of this catalog, 1/2" Super-Coil (CC series), for ordering information.

Code	Style
30	Standard ('SS' Coil)
30	High Pressure ('SP' Coil)

Code	Seals / Kit No.
N	Nitrile / Buna-N (SK30105N-1)
V	Fluorocarbon / (SK30105V-1)

Code	Override Option
Omit	If no M.O.
1	Manual Override

Code	Filter Screen
Omit	Not required
F	60 Mesh Screen on Inlet Port

*Order Bodies Separately See section BC*

<b>LB10</b>		
Line Body	Porting	Body Material

Code	Porting
591	1/4" SAE

Code	Body Material
S	Steel (5000 PSI)
A	Aluminium (3000 PSI)

- CV Check Valves
- SH Shuttle Valves
- LM Load/Motor Controls
- FC Flow Controls
- PC Pressure Controls
- LE Logic Elements
- DC Directional Controls
- MV Manual Valves
- SV Solenoid Valves
- PV Proportional Valves
- CE Coils & Electronics
- CB Carpak Bodies
- BC Bodies & Cavities
- TD Technical Data