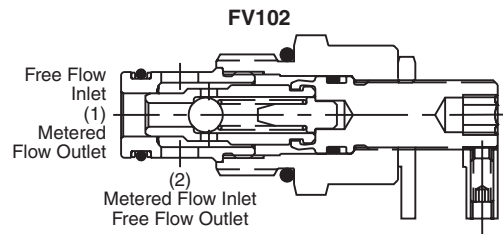
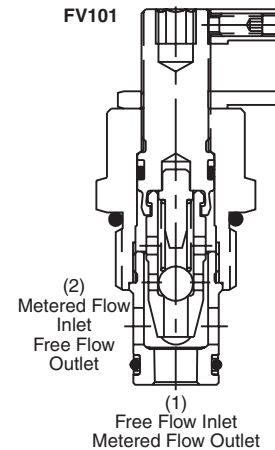
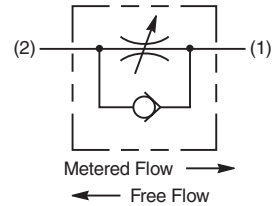


General Description

Needle Valve with a Reverse Check. Also known as a Flow Control Valve. For additional information see Technical Tips on pages FC1-FC4.

Features

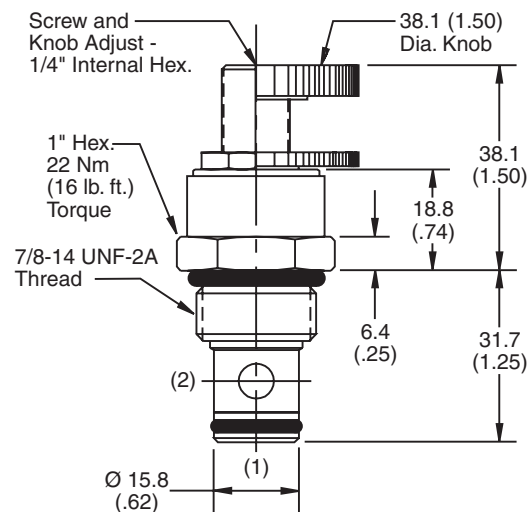
- Hardened, precision ground parts for durability
- Compact size for reduced space requirements
- Fine thread needle option available for precise adjustment
- All external parts zinc plated



Specifications

| | |
|-------------------------------|--|
| Rated Flow | FV101 45 LPM (12 GPM) FV102 23 LPM (6 GPM) |
| Maximum Inlet Pressure | 210 Bar (3000 PSI) |
| Cartridge Material | All parts steel. All operating parts hardened steel. |
| Operating Temp. Range/Seals | -34°C to +121°C (Nitrile) (-30°F to +250°F) -26°C to +204°C (Fluorocarbon) (-15°F to +400°F) |
| Fluid Compatibility/Viscosity | Mineral-based or synthetic with lubricating properties at viscosities of 45 to 2000 SSU (6 to 420 cSt) |
| Filtration | ISO-4406 18/16/13, SAE Class 4 |
| Approx. Weight | 0.23 kg (0.50 lbs.) |
| Cavity | C10-2 (See BC Section for more details) |
| Form Tool | Rougher None Finisher NFT10-2F |

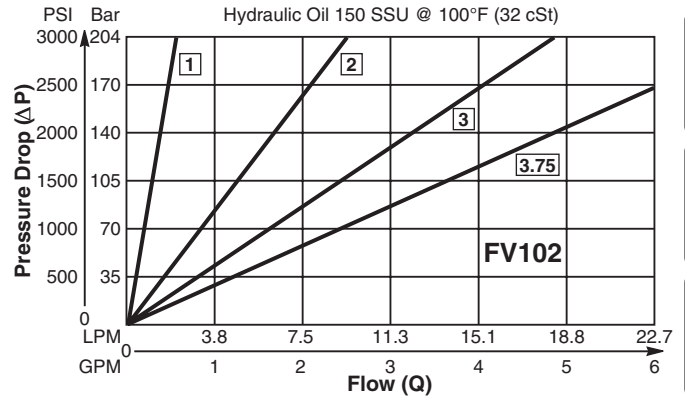
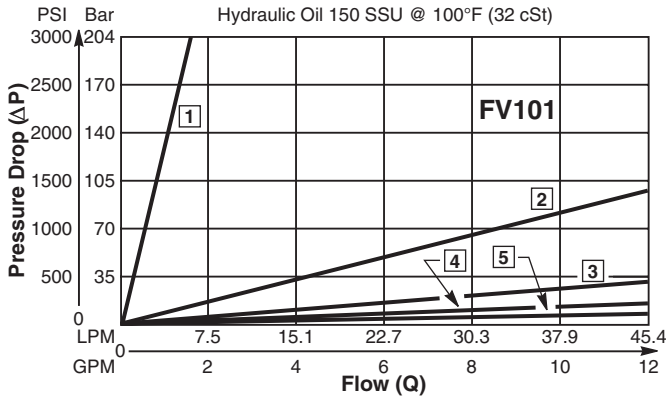
Dimensions Millimeters (Inches)



| | |
|-----------|----------------------|
| CV | Check Valves |
| SH | Shuttle Valves |
| LM | Load/Motor Controls |
| FC | Flow Controls |
| PC | Pressure Controls |
| LE | Logic Elements |
| DC | Directional Controls |
| MV | Manual Valves |
| SV | Solenoid Valves |
| PV | Proportional Valves |
| CE | Coils & Electronics |
| CB | Cartridge Bodies |
| BC | Bodies & Cavities |
| TD | Technical Data |

Performance Curves

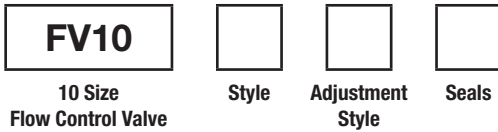
Metered Flow vs. Pressure Drop (Through cartridge only)



□ = No. of Turns CCW From Fully Closed.
 The number on each curve indicates the number of complete turns of the knob or screw adjustment from fully closed. When the metered flow is 22.5 LPM (6 GPM) and the adjustment is two complete turns from closed, the pressure drop will be 13.8 Bar (200 PSI). When the metered flow is 22.5 LPM (6 GPM) and the adjustment is five complete turns from closed, the pressure drop will be 3.5 Bar (50 PSI).

□ = No. of Turns CCW From Fully Closed.
 The number on each curve indicates the number of complete turns of the knob or screw adjustment from fully closed (non-metered flow). When the metered flow is 7.5 LPM (2 GPM) and the adjustment is two complete turns from closed, the pressure drop will be 156.9 Bar (2275 PSI). When the metered flow is 7.5 LPM (2 GPM) and the adjustment is 3.75 turns from closed, the pressure drop will be 56.6 Bar (820 PSI).

Ordering Information



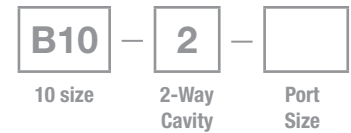
Highlighted represents preferred options that offer the shortest lead times. Other options may be available, but at extended lead times.

| Code | Style |
|------|-------------|
| 1 | Coarse Flow |
| 2 | Fine Flow |

| Code | Adjustment Style / Kit No. |
|------|----------------------------|
| K | Knob Adjust (840208K) |
| S | Screw Adjust |

| Code | Seals / Kit No. |
|------|--------------------------|
| Omit | Nitrile / (SK10-2) |
| V | Fluorocarbon / (SK10-2V) |

Order Bodies Separately
 See section BC



| Code | Porting / Body Material |
|------|------------------------------|
| 8T | SAE-8 / Steel (5000 PSI) |
| A8T | SAE-8 / Aluminium (3000 PSI) |

- CV
- Check Valves
- SH
- Shuttle Valves
- LM
- Load/Motor Controls
- FC
- Flow Controls
- PC
- Pressure Controls
- LE
- Logic Elements
- DC
- Directional Controls
- MV
- Manual Valves
- SV
- Solenoid Valves
- PV
- Proportional Valves
- CE
- Coils & Electronics
- CB
- Cartrpak Bodies
- BC
- Bodies & Cavities
- TD
- Technical Data