

**General Description**

Cartridge Style Pilot Operated Check Valve. For additional information see Technical Tips on pages CV1-CV2.

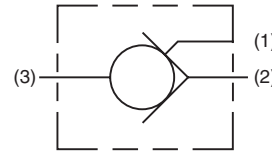
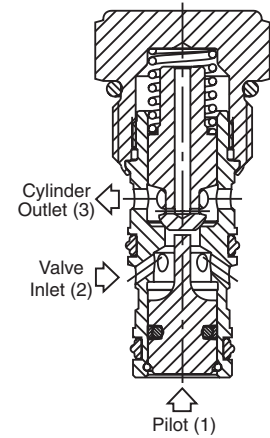
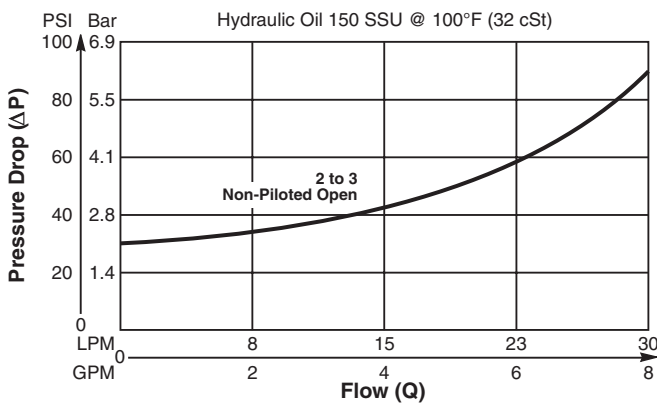


**Features**

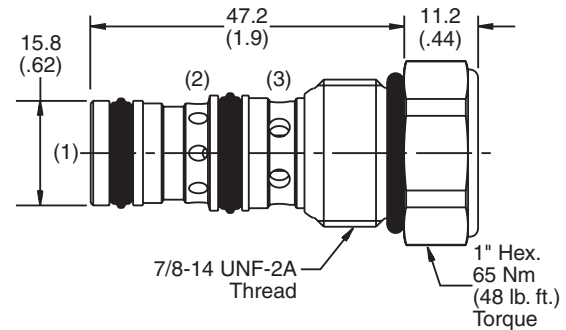
- Hardened, precision ground parts for durability
- Internal pilot position simplifies manifold design
- All external parts zinc plated

**Performance Curve**

**Pressure Drop vs. Flow** (Through cartridge only)



**Dimensions** Millimeters (Inches)



**Specifications**

Rated Flow	30 LPM (8 GPM)
Maximum Inlet Pressure	350 Bar (5000 PSI)
Leakage at 150 SSU (32 cSt)	2 drops/min. (0.13 cc/min) at 350 Bar (5000 PSI)
Pilot Ratio	4:1
Cartridge Material	All parts steel. All operating parts hardened steel.
Operating Temp. Range/Seals	-37°C to +93°C ("D"-Ring) (-35°F to +200°F) -34°C to +121°C (Nitrile) (-30°F to +250°F) -26°C to +204°C (Fluorocarbon) (-15°F to +400°F)
Fluid Compatibility/Viscosity	Mineral-based or synthetic with lubricating properties at viscosities of 45 to 2000 SSU (6 to 420 cSt)
Filtration	ISO-4406 18/16/13, SAE Class 4
Approx. Weight	0.9 kg (0.2 lbs.)
Cavity	C10-3 (See BC Section for more details)
Form Tool	Rougher NFT10-3R Finisher NFT10-3F

**Ordering Information**

**CPH104P**           

**10 Size**      **Cracking**      **Seals**  
**Check Valve**      **Pressure**

**Highlighted** represents preferred options that offer the shortest lead times. Other options may be available, but at extended lead times.

Code	Cracking Pressure
15	1.0 Bar (15 PSI)
<b>Omit</b>	<b>1.4 Bar (20 PSI)</b>
<b>50</b>	<b>3.5 Bar (50 PSI)</b>

Code	Seals / Kit No.
<b>Omit</b>	<b>"D"-Ring / (SK10-3)</b>
N	Nitrile / (SK10-3)
V	Fluorocarbon / (SK10-3V)

Order Bodies Separately  
 See section BC

**B10** - **3** -

10 size      3-Way Cavity      Port Size

Code	Porting / Body Material
6T	SAE-6 / Steel (5000 PSI)
A6T	SAE-6 / Aluminium (3000 PSI)

CV
Check Valves
SH
Shuttle Valves
LM
Load/Motor Controls
FC
Flow Controls
PC
Pressure Controls
LE
Logic Elements
DC
Directional Controls
MV
Manual Valves
SV
Solenoid Valves
PV
Proportional Valves
CE
Coils & Electronics
CB
Carpak Bodies
BC
Bodies & Cavities
TD
Technical Data