

General Description

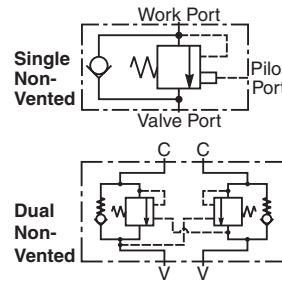
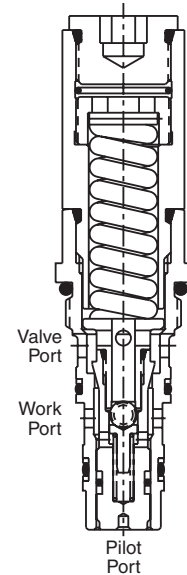
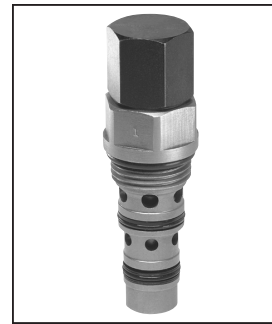
Threaded Cartridge Style Counterbalance Valve.
 For additional information see Technical Tips on pages LM1-LM4.

Features

- Conical Poppet design provides longer metering stroke for stable operation
- Hardened seat provides reliable load holding
- External vent option available for high back pressure applications
- Tamper resistant cap for added safety and security
- Various pilot ratios available for application flexibility
- Unique cavity prevents other valves from being “accidentally” installed

Specifications

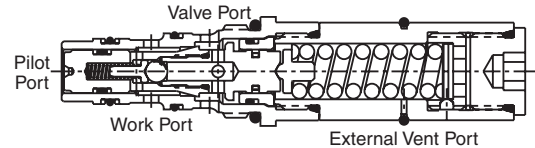
Rated Flow	37.5 LPM (10 GPM)
Maximum Inlet Pressure	350 Bar (5500 PSI)
Leakage at 150 SSU (32 cSt)	5 drops/min. (0.33 cc/min) @ 80% of thermal crack pressure
Cartridge Material	All parts steel. All operating parts hardened steel.
Operating Temp. Range/Seals	-34°C to +121°C (Nitrile) (-30°F to +250°F) -26°C to +204°C (Fluorocarbon) (-15°F to +400°F)
Fluid Compatibility/Viscosity	Mineral-based or synthetic with lubricating properties at viscosities of 45 to 2000 SSU (6 to 420 cSt)
Filtration	ISO-4406 18/16/13, SAE Class 4
Approx. Weight	0.38 kg (0.88 lbs.)
Cavity	CDD-1010 (See BC Section for more details)
Form Tool	FR-0500



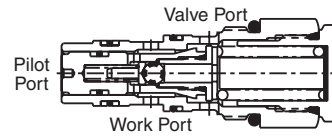
MHC-010-S*S* Non-Vented Counterbalance Adjustable

Construction

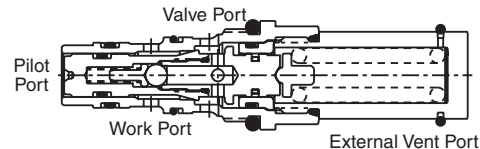
MHC-010-V*S* Vented Counterbalance Adjustable



MHC-010-S*N* Non-Vented Counterbalance Non-Adjustable

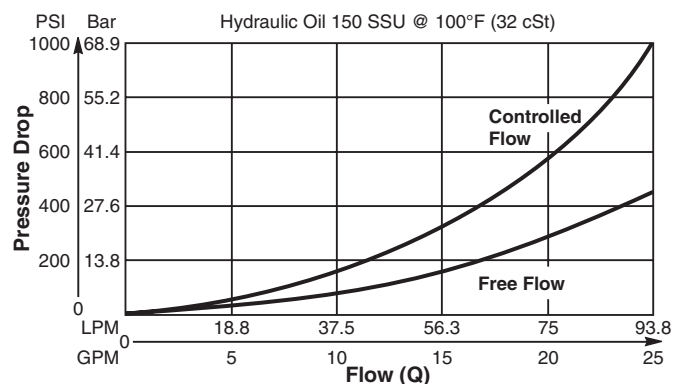


MHC-010-V*N* Vented Counterbalance Non-Adjustable

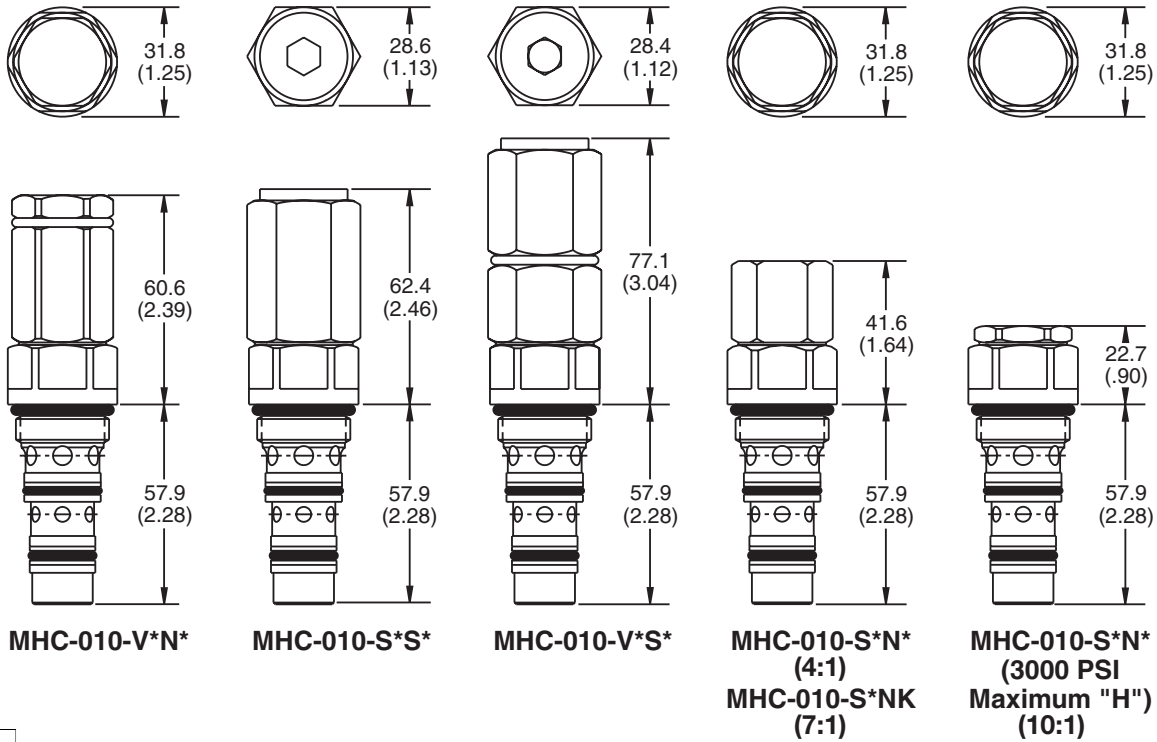


Performance Curve

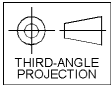
Flow vs. Pressure Drop (Through cartridge only)



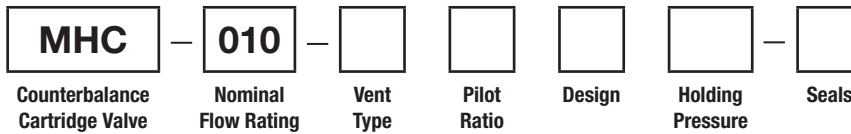
Dimensions Millimeters (Inches)



Torque Values
 68-75 Nm (50-55 lb. ft.)
 Typical for all



Ordering Information



Highlighted represents preferred options that offer the shortest lead times. Other options may be available, but at extended lead times.

Code	Nominal Flow Rating
010	37.5 LPM (10 GPM)

Code	Vent Type
S	Standard (non-vented)
V	Vented

Code	Pilot Ratio
B	4 : 1
F	7 : 1 (Standard)
J	10 : 1

Code	Design
S	Standard (adjustable)
N	Shimmed (non-adjustable)

Code	Holding Pressure
D	69 Bar (1000 PSI) Shim adjustable version only
F	140 Bar (2000 PSI)
H	210 Bar (3000 PSI) Standard version
K	350 Bar (5000 PSI) Standard Setting: 7:1 and 10:1 only Shim version only

Code	Seals / Kit No.
00B	Nitrile / 711922
00F	Fluorocarbon / 711825

Order Bodies Separately
 See section BC



Code	Body Type
A	Single
D	Dual

Code	Port Size
53	SAE-10 through port

- CV
- Check Valves
- SH
- Shuttle Valves
- LM
- Load/Motor Controls
- FC
- Flow Controls
- PC
- Pressure Controls
- LE
- Logic Elements
- DC
- Directional Controls
- MV
- Manual Valves
- SV
- Solenoid Valves
- PV
- Proportional Valves
- CE
- Coils & Electronics
- CB
- Cartrpak Bodies
- BC
- Bodies & Cavities
- TD
- Technical Data