

- CV**  
Check Valves
- SH**  
Shuttle Valves
- LM**  
Load/Motor Controls
- FC**  
Flow Controls
- PC**  
Pressure Controls
- LE**  
Logic Elements
- DC**  
Directional Controls
- MV**  
Manual Valves
- SV**  
Solenoid Valves
- PV**  
Proportional Valves
- CE**  
Coils & Electronics
- CB**  
Cartpak Bodies
- BC**  
Bodies & Cavities
- TD**  
Technical Data

**Valve/Cavity Compatibility**

For additional information see Technical Tips on pages BC1-BC2.

		VALVE	
		MHC-022	2-N-4*-25
CAVITY	MHC-022	X	X
	2-N-4*-25	X	X

**Ordering Information**

**MHC** — **022** — **53**

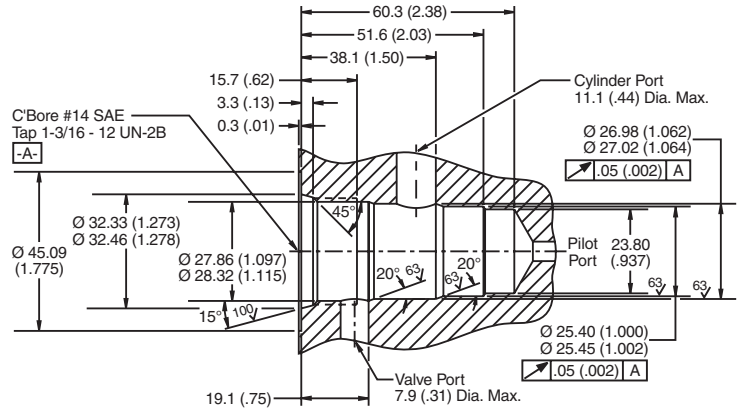
Counterbalance Cartridge Valve    Nominal Flow Rating    Body Type    Port Size

Code	Body Type	Code	Port Size
A	Single	53	SAE-10 through port
D	Dual		

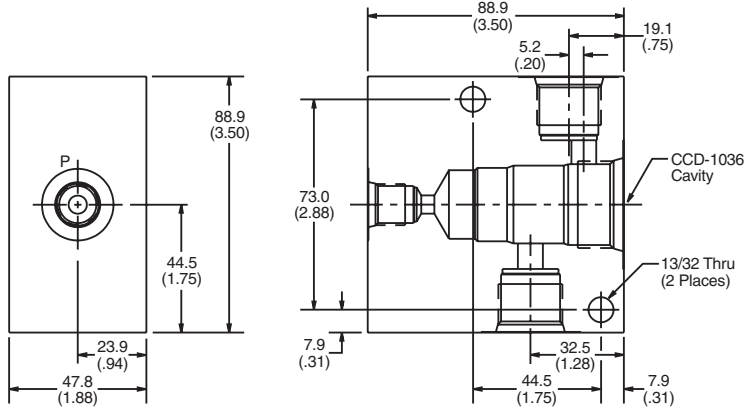
**Form Tool:** FR-501  
**Weight:** Single 1.7 kg (3.75 lbs.)  
 Dual 2.7 kg (5.90 lbs.)

**Dimensions** Millimeters (Inches)

**CDD-1036**



**Single Body**



**Dual Body**

