

**Technical Information**

- CV** Check Valves
- SH** Shuttle Valves
- LM** Load/Motor Controls
- FC** Flow Controls
- PC** Pressure Controls
- LE** Logic Elements
- DC** Directional Controls
- MV** Manual Valves
- SV** Solenoid Valves
- PV** Proportional Valves
- CE** Coils & Electronics
- BC** Bodies & Cavities
- TD** Technical Data

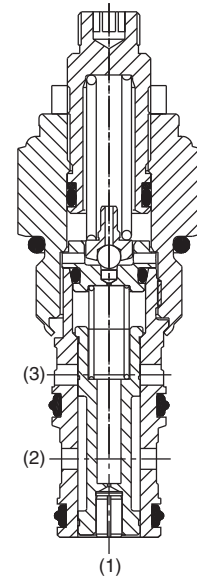
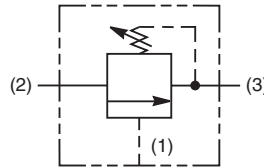
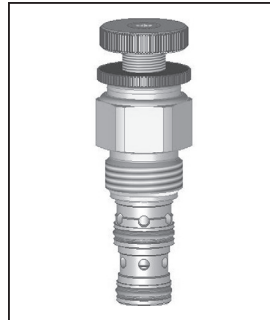
**General Description**

Pilot Operated Sequence Valve (Externally Piloted, Internally Vented).  
For additional information see Technical Tips on pages PC1-PC6.



**Features**

- Hardened, precision ground parts for durability
- Low profile adapter for minimal space requirements
- Fully guided poppet for more consistent reseal
- Steel adapters are zinc plated
- Polyurethane "D"-Ring eliminates backup rings and prevents hydrolysis
- Internal screening protects pilot spring from debris



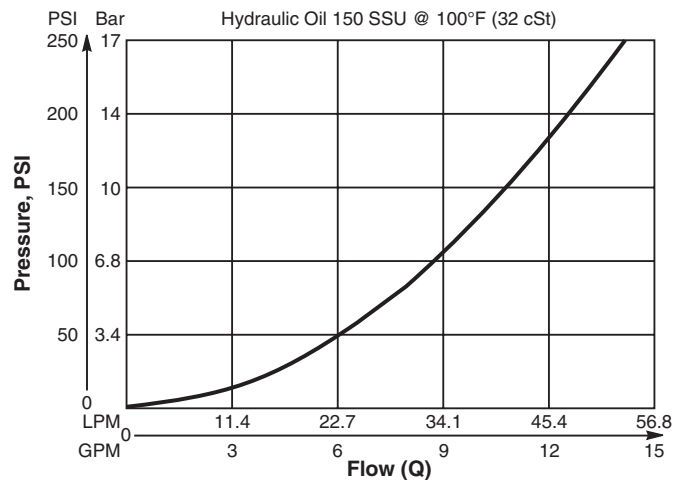
**Specifications**

<b>Rated Flow</b>	56.3 LPM (15 GPM)								
<b>Maximum Inlet Pressure</b>	380 Bar (5500 PSI)								
<b>Maximum Pressure Setting</b>	350 Bar (5000 PSI)								
<b>Sensitivity: Pressure/Turn</b>	<table border="0"> <tr> <td><b>10</b></td> <td>19.6 Bar (285 PSI)</td> </tr> <tr> <td><b>20</b></td> <td>39.3 Bar (570 PSI)</td> </tr> <tr> <td><b>30</b></td> <td>58.9 Bar (859 PSI)</td> </tr> <tr> <td><b>50</b></td> <td>131.7 Bar (1910 PSI)</td> </tr> </table>	<b>10</b>	19.6 Bar (285 PSI)	<b>20</b>	39.3 Bar (570 PSI)	<b>30</b>	58.9 Bar (859 PSI)	<b>50</b>	131.7 Bar (1910 PSI)
<b>10</b>	19.6 Bar (285 PSI)								
<b>20</b>	39.3 Bar (570 PSI)								
<b>30</b>	58.9 Bar (859 PSI)								
<b>50</b>	131.7 Bar (1910 PSI)								
<b>Maximum Tank Pressure</b>	350 Bar (5000 PSI)								
<b>Maximum Drain Flow</b>	See maximum drain flow chart (Lower right)								
<b>Reseat Pressure</b>	90% of crack pressure								
<b>Leakage at 150 SSU (32 cSt)</b>	82 cc/min. (5 cu. in./min.) @ 210 Bar (3000 PSI)								
<b>Cartridge Material</b>	All parts steel. All operating parts hardened steel.								
<b>Operating Temp. Range/Seals</b>	-45°C to +132°C ("D"-Ring) (-50°F to +270°F) -34°C to +121°C (Nitrile) (-30°F to +250°F) -26°C to +204°C (Fluorocarbon) (-15°F to +400°F)								
<b>Fluid Compatibility/Viscosity</b>	Mineral-based or synthetic with lubricating properties at viscosities of 45 to 2000 SSU (6 to 420 cSt)								
<b>Filtration</b>	ISO-4406 18/16/13, SAE Class 4								
<b>Approx. Weight</b>	.45 kg (1.0 lbs.)								
<b>Cavity</b>	C10-3 (See BC Section for more details)								
<b>Form Tool</b>	Rougher NTF10-3R Finisher NFT10-3F								

**Performance Curve**

**Flow vs. Inlet Pressure**

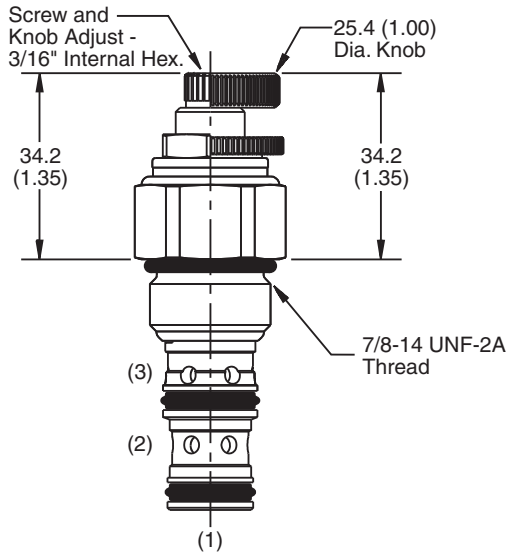
(Pressure rise through cartridge only)



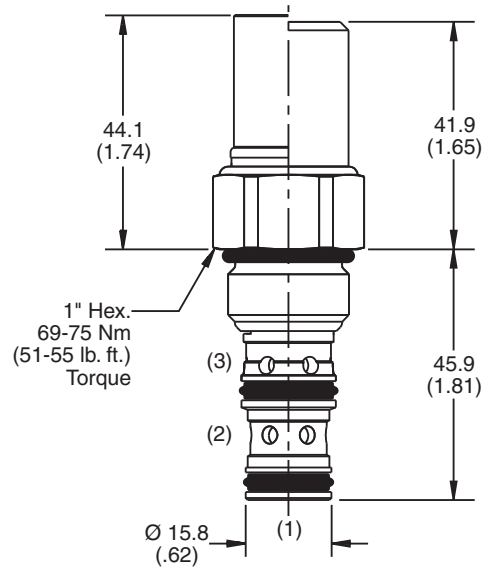
**Maximum Drain Flow**

<b>P<sub>PILOT</sub> - P<sub>SETTING</sub></b>	<b>Drain Flow</b>
6.9 Bar (100 PSI)	0.34 LPM (0.09 GPM)
35 Bar (500 PSI)	0.76 LPM (0.20 GPM)
69 Bar (1000 PSI)	1.08 LPM (0.29 GPM)
138 Bar (2000 PSI)	1.53 LPM (0.40 GPM)
207 Bar (3000 PSI)	1.87 LPM (0.50 GPM)

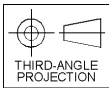
**Dimensions** Millimeters (Inches)



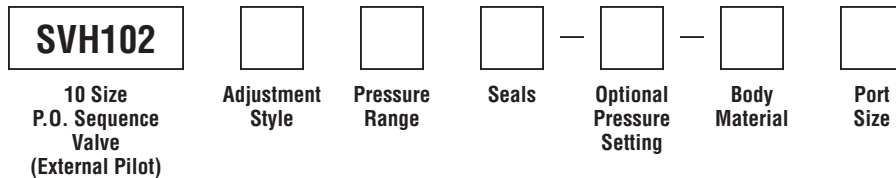
**Screw/Knob Version**



**Fixed Cap/Tamper Resistant Version**



**Ordering Information**



Code	Adjustment Style / Kit No.
F	Fixed style, preset at factory.
K	Knob Adjust (717784-10)
S	Screw Adjust
T	Tamper Resistant Cap (718083)

Code	Seals / Kit No.
Omit	"D"-Ring / (SK10-3)
N	Nitrile / (SK10-3N)
V	Fluorocarbon / (SK10-3V)

Code	Body Material
Omit	Steel
A	Aluminum

Code	Pressure Range
10	20.7 - 69 Bar (300 - 1000 PSI) Standard Setting: 34.5 Bar (500 PSI) @ crack pressure, approximately 11.3 LPM (3 GPM)
20	6.9 - 138 Bar (100 - 2000 PSI) Standard Setting: 69 Bar (1000 PSI) @ crack pressure, approximately 11.3 LPM (3 GPM)
30	13.8 - 207 Bar (200 - 3000 PSI) Standard Setting: 103.5 Bar (1500 PSI) @ crack pressure, approximately 11.3 LPM (3 GPM)
50	13.8 - 345 Bar (200 - 5000 PSI) Standard Setting: 172.4 Bar (2500 PSI) @ crack pressure, approximately 11.3 LPM (3 GPM)

Optional Pressure Setting	
Pressure ÷ 10	i.e. 235 = 2350 PSI
(Omit if standard setting is used)	
Setting Range:	100 to 5000 PSI
All settings at crack pressure, approximately 11.3 LPM (3 GPM)	

Code	Port Size	Body Part No.
Omit	Cartridge Only	
6T	SAE-6	(B10-3-*6T)
8T	SAE-8	(B10-3-*8T)

\* Add "A" for aluminum, omit for steel.

**100-1000 psi**