

Technical Information

- CV** Check Valves
- SH** Shuttle Valves
- LM** Load/Motor Controls
- FC** Flow Controls
- PC** Pressure Controls
- LE** Logic Elements
- DC** Directional Controls
- MV** Manual Valves
- SV** Solenoid Valves
- PV** Proportional Valves
- CE** Coils & Electronics
- BC** Bodies & Cavities
- TD** Technical Data

General Description

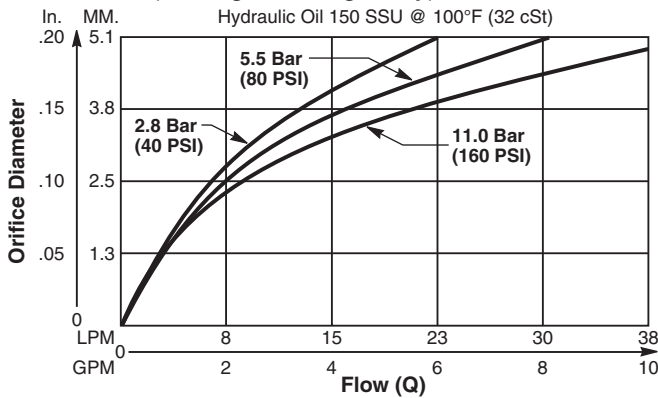
Priority Type Pressure Compensator. This valve is designed to be used in conjunction with an external orifice (fixed or variable) to provide a constant flow to the priority port. Excess flow is bypassed through port 2. For additional information see Technical Tips on pages FC1-FC4.

Features

- Hardened, precision ground parts for durability
- Stable and quiet response
- Contamination tolerant
- Standard valve bodies and common cavities
- All external parts zinc plated

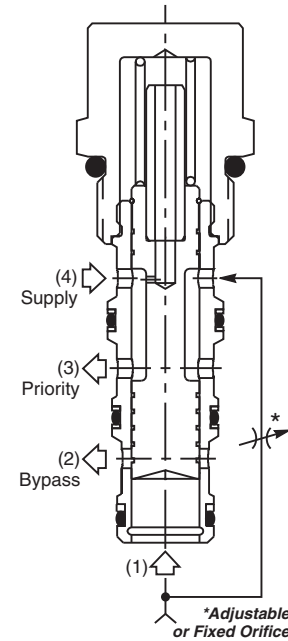
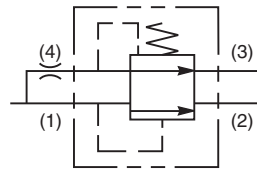
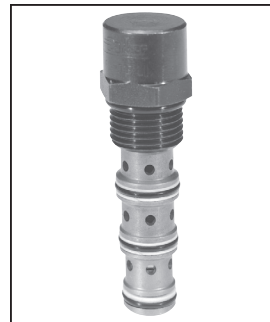
Performance Curve

Control ΔP (Through cartridge only)



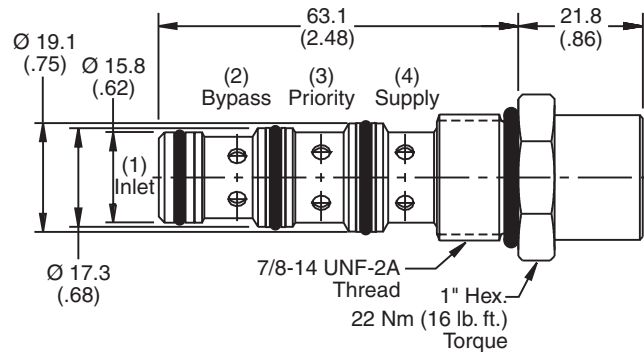
Specifications

Rated Flow	Inlet 56 LPM (15 GPM) Flow Setting 38 LPM (10 GPM)
Maximum Inlet Pressure	245 Bar (3500 PSI)
Accuracy (Fixed)	±10% Spring rating to 210 Bar (3000 PSI)
Adjustment Range	None
Cartridge Material	All parts steel. All operating parts hardened steel.
Operating Temp. Range/Seals	-34°C to +121°C (Nitrile) (-30°F to +250°F) -26°C to +204°C (Fluorocarbon) (-15°F to +400°F)
Fluid Compatibility/Viscosity	Mineral-based or synthetic with lubricating properties at viscosities of 45 to 2000 SSU (6 to 420 cSt)
Filtration	ISO-4406 18/16/13, SAE Class 4
Approx. Weight	.14 kg (0.3 lbs.)
Cavity	C10-4 (See BC Section for more details)
Form Tool	Rougher NFT10-4R Finisher NFT10-4F



To control flow, install an adjustable needle valve or a fixed orifice in the supply line or manifold ahead of Port 4. The flow curve, on the left, shows an approximate pressure compensated flow vs. orifice size. Excess flow will exit the bypass Port 2. Pressure compensated flow will exit Port 3.

Dimensions Millimeters (Inches)



Ordering Information

FCP101F Pressure Differential Seals Body Material Port Size

10 Size Pressure Compensator Valve (Fixed Style)

Code	Press. Differential	Code	Body Material
Omit	11 Bar (160 PSI)	Omit	Steel
04	2.8 Bar (40 PSI)	A	Aluminum
08	5.5 Bar (80 PSI)		

Code	Seals / Kit No.	Code	Port Size	Body Part No.
Omit	Nitrile / (SK10-4N)	Omit	Cartridge Only	
V	Fluorocarbon / (SK10-4V)	6T	SAE-6	(B10-4-*6T)
		8T	SAE-8	(B10-4-*8T)

* Add "A" for aluminum, omit for steel.

