

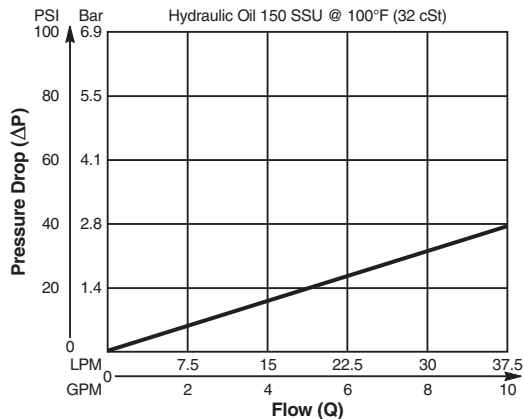
- CV** Check Valves
- SH** Shuttle Valves
- LM** Load/Motor Controls
- FC** Flow Controls
- PC** Pressure Controls
- LE** Logic Elements
- DC** Directional Controls
- MV** Manual Valves
- SV** Solenoid Valves
- PV** Proportional Valves
- CE** Coils & Electronics
- BC** Bodies & Cavities
- TD** Technical Data

Valve/Cavity Compatibility

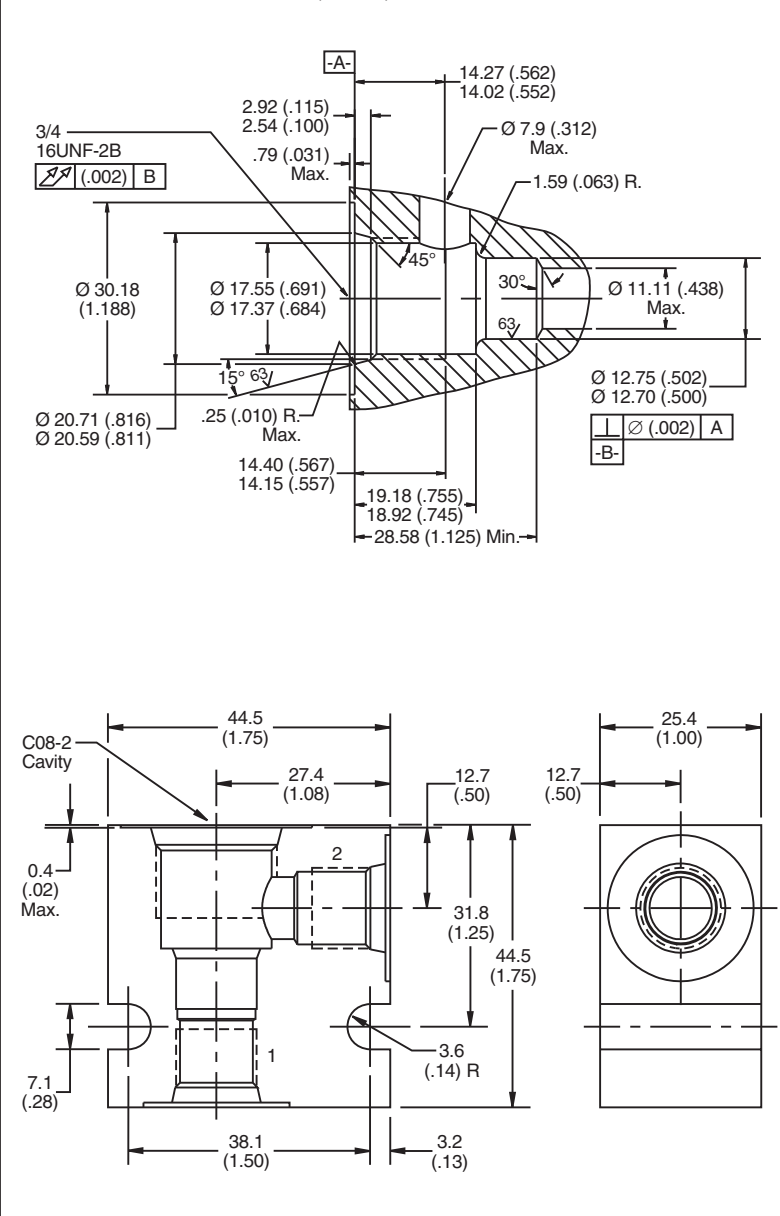
For additional information see Technical Tips on pages BC1-BC6.

| CAVITY | VALVE | | | | |
|-----------------|-----------------|--------|----------|-----|-----|
| | Winner's Circle | Parker | Waterman | FPS | CEC |
| Winner's Circle | X | X | X | X | X |
| Parker | X | X | X | X | X |
| Waterman | X | X | X | X | X |
| FPS | X | X | X | X | X |
| CEC | X | X | X | X | X |

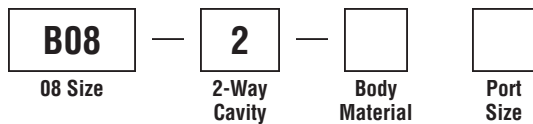
Performance Curve Pressure Drop vs. Flow



Dimensions



Ordering Information



| Code | Body Material |
|------|---------------|
| Omit | Steel |
| A | Aluminum |

| Code | Port Size |
|------|-----------|
| 4T | SAE - 4 |
| 6T | SAE - 6 |

Form Tool: Rougher None
 Finisher NFT08-2F
Weight: .11 kg (.25 lbs.)