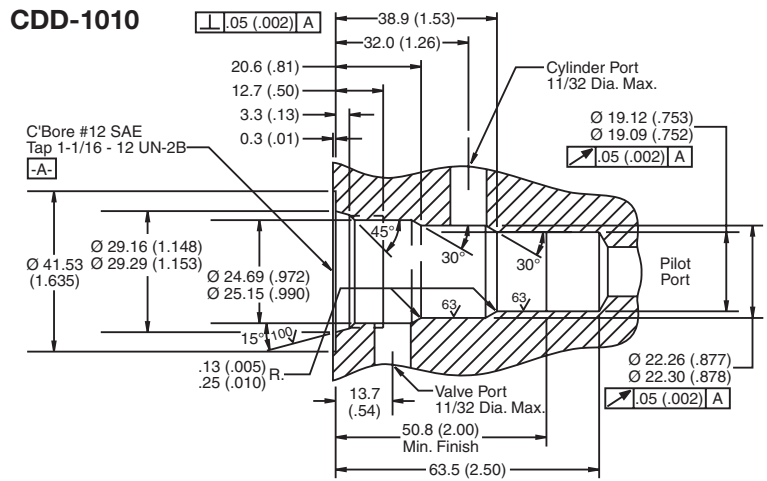


**Valve/Cavity Compatibility**

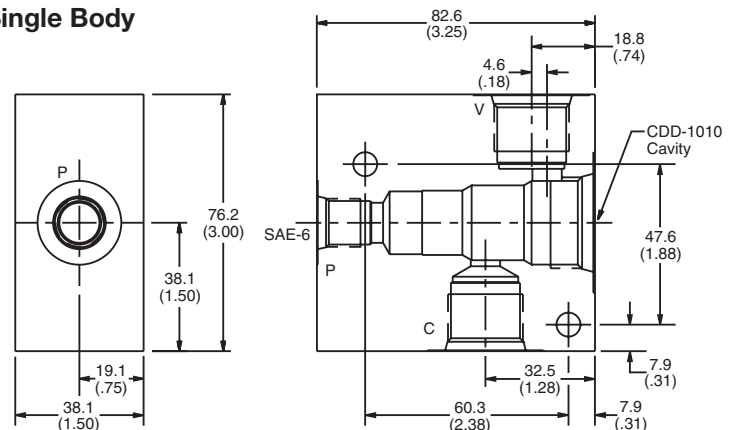
For additional information see Technical Tips on pages BC2-BC3.

		VALVE	
		MHC-010	2-N-4*-10
CAVITY	MHC-010	X	X
	2-N-4*-10	X	X

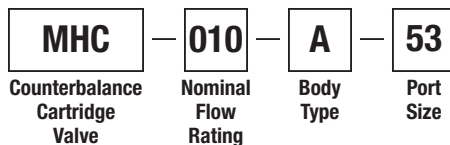
**Dimensions** Millimeters (Inches)



**Single Body**



**Ordering Information**



Code	Body Type
A	Single

Code	Port Size
53	SAE-10 through port

Weight: Single 1.1 kg (2.25 lbs.)

**\*Please be advised that this is a non-core line body. Additional lead-time and/or pricing requirements may exist when ordering.**

**CV**  
Check Valves

**SH**  
Shuttle Valves

**LM**  
Load/Motor Controls

**FC**  
Flow Controls

**PC**  
Pressure Controls

**LE**  
Logic Elements

**DC**  
Directional Controls

**SV**  
Solenoid Valves

**PV**  
Proportional Valves

**CE**  
Coils & Electronics

**BC**  
Bodies & Cavities

**TD**  
Technical Data