

# 700 Series

## Fuel Filter/Water Separators

Instruction Part Number 22909 Rev F



### Overview:

700 Series fuel filter/water separator assemblies are two-stage filtration and repriming systems. These complete fuel management systems isolate contaminants present in diesel fuels and trap them prior to reaching the fuel injection system, protecting the engine's fuel system from costly and premature failure.

Please read ALL instructions before beginning installation.



### Contact Information: Required Materials:

Parker Hannifin Corporation  
**Racor Division**  
P.O. Box 3208  
3400 Finch Road  
Modesto, CA 95353

phone 800 344 3286  
209 521 7860  
fax 209 529 3278  
racor@parker.com

[www.parker.com/racor](http://www.parker.com/racor)  
[www.parker.com/racorproducts](http://www.parker.com/racorproducts)

The following customer supplied materials should be on hand before beginning installation:

- Shop towels
- Pipe dope (no pipe tapes)
- Motor oil or clean fuel
- Two 7/8"-14 UNF fittings
- Fuel hose
- 3/8" mounting hardware



ENGINEERING YOUR SUCCESS.

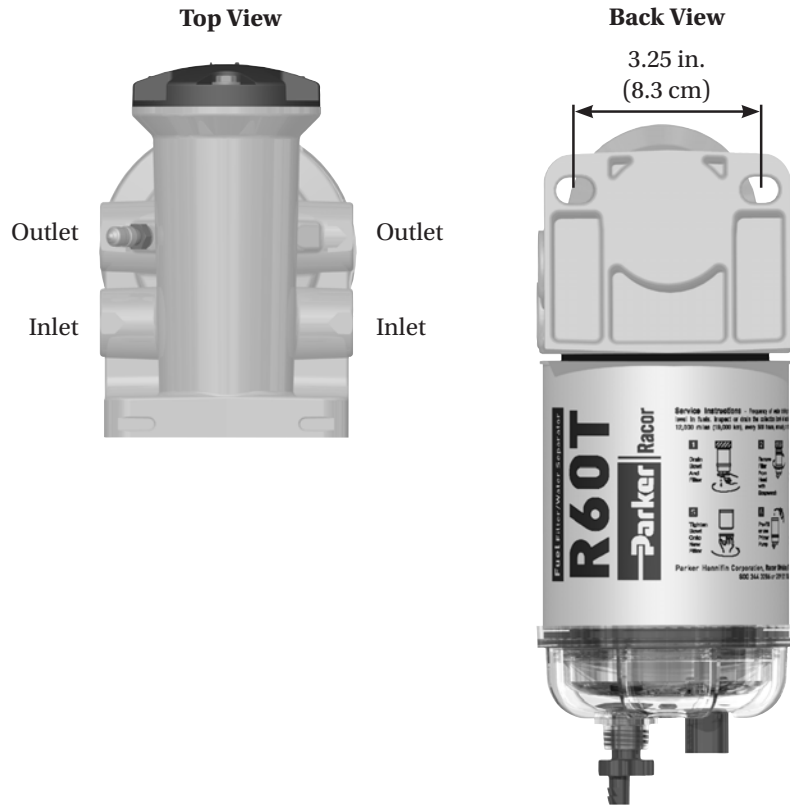
# Mounting

Keep all fuel lines and flow restrictions to a minimum. Use maximum size fuel hose possible. Do not use two 45° fittings where one 90° elbow will work.

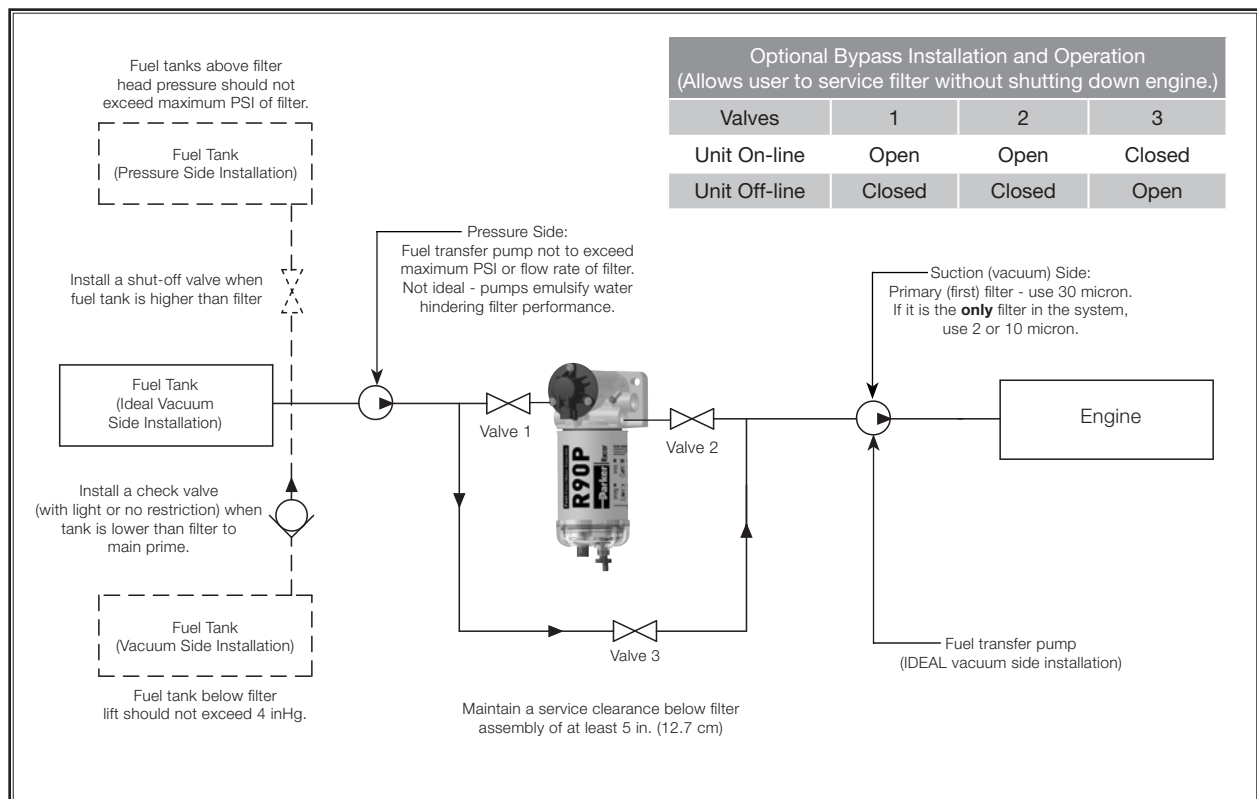
Avoid sharp bends, surfaces that move, sharp edges, or hot areas such as exhaust piping.

Use 3/8" mounting hardware.

Mount filter vertically on suction (vacuum) side of fuel transfer pump (or injection pump).



# Installation Diagram



# Installation

Maintain a safe working environment. Obtain good ventilation and do not smoke or allow open flames near installation.

This filter assembly will replace stand-alone primary fuel filters that may be installed on the engine. Remove existing primary filter, if applicable, and dispose of properly.

Apply thread sealant to fittings, lubricant to o-rings, and install fittings into appropriate inlet and outlet ports. Tighten snugly. Install port plugs in unused ports and tighten snugly.

Connect fuel hose to the inlet and outlet fittings and use hose clamps where appropriate.



# Draining Water

Frequency of water draining is determined by the contamination level of the fuel. Drain bowl frequently if contaminated fuel is suspected or when remote water-in-fuel lamp illuminates.



# Element Replacement

Replace element every 10,000 miles, 500 hours, every other oil change, if power loss is noticed, or annually, whichever occurs first.

# Operation

For initial installation, repriming, or to restart after running out of fuel.

Turn ignition to ON position—**do not start engine.**

Remove cap from vent valve. Press and **hold** PRIME button on control panel (**12 volt only**)—this will activate primer pump and yellow 'prime' LED will illuminate.

Push button to start pump and fill assembly. Release button when system is filled (**24 volt only**).

Press and **hold** vent valve open to release excess air from filter. Release vent valve at **first** indication of fuel.

## [Warning!]

**If vent valve is kept open too long, a pressurized stream of fuel will exit creating a potentially hazardous situation. Continue to hold PRIME button for about 30 seconds (or until unit is primed) and release.**

**Note: fuel flow will bypass pump when not in use.**

**Start engine and run at high idle for about three minutes.**

**Note: The engine may run rough while remaining air is forced through the fuel system.**

# Installing the Control Panel

(12 volt System Only)

- 1. Monaco Connector:**  
(cut off if installing on any other application).
- 2. Green Wire:**  
To remote warning light or cap off.
- 3. Red Wire:**  
To 7.5 amp fuse, then to +12 volt dc power.
- 4. Black Wire:**  
To ground.
- 5. To Filter Connector.**

Install control panel in engine compartment. Mount control panel on a solid surface and in an area that is visible and easily accessible.

Use control box as a template to mark locations for mounting holes. Drill holes and mount control box.

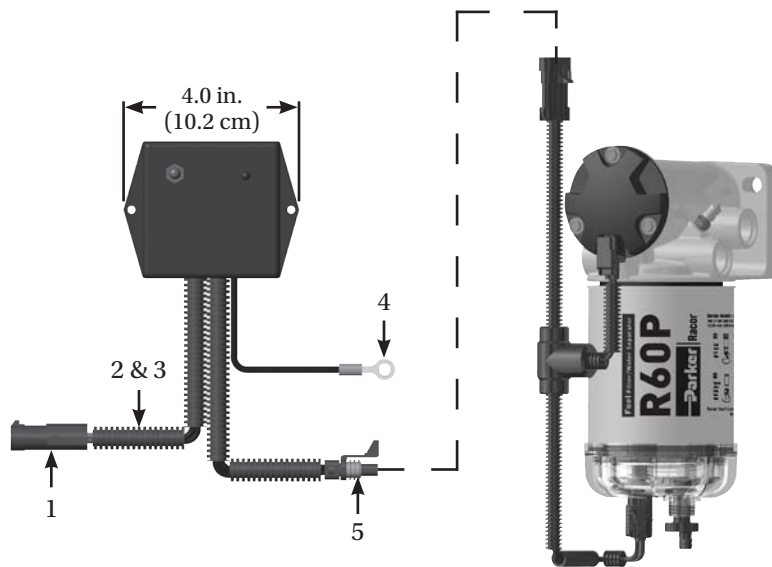
Route the filter wiring harness to control panel and attach connectors; push firmly until safety lock engages.

Use wire ties to secure wiring.

Connect black wire to ground. Connect red wire through a 7.5 amp in-line fuse to a constant 12 volt dc power source. Connect green wire to an optional remote warning light, if equipped, or cap off.

12 Volt Control Panel

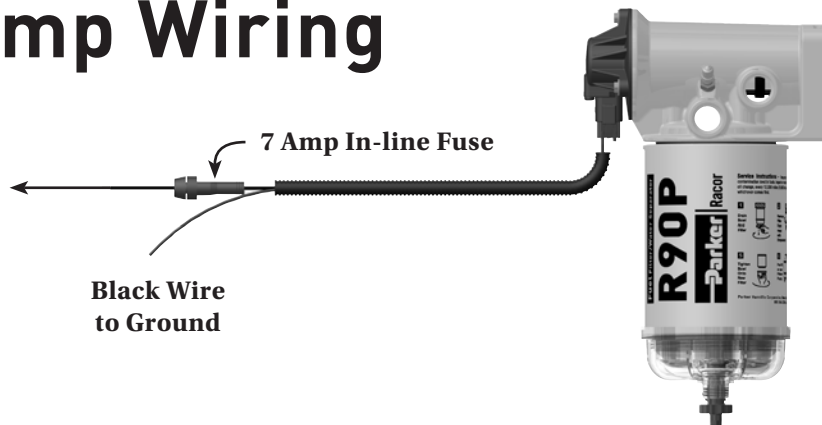
12 Volt Filter Assembly



# 24 Volt Pump Wiring

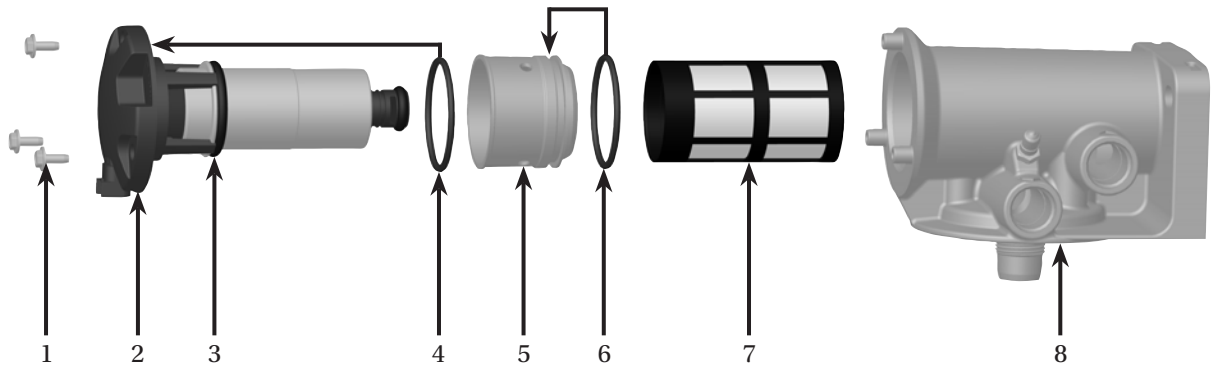
Red Wire (with fuse) to Push Button, then to 24 Volt Power

Black Wire to Ground



# Primer Pump Kits

(12 volt pump shown below)



12 volt Primer Pump Kit Parts List	
1.	Screws
2.	Pump
3.	Body o-ring
4.	Adapter
5.	Adapter o-ring
6.	Prescreen Element
7.	Mounting Head
RK22895 Primer Head Kit (Includes all parts shown)	
RK22933 Primer Pump Kit (Includes numbers 1-7)	
RK22934 Prescreen Kit (Includes numbers 3-7)	

24 volt Primer Pump Kit Parts List	
1.	Screws
2.	Pump
3.	Body o-ring
4.	Adapter
5.	Adapter o-ring
6.	Prescreen Element
7.	Mounting Head
RK23085 Primer Head Kit (Includes all parts shown)	
RK23087 Primer Pump Kit (Includes numbers 1-7)	
RK22934 Prescreen Kit (Includes numbers 3-7)	

**Notes:** Completely drain assembly. Tear-down is performed in numerical order as shown (1-8). Rebuild assembly in reverse order (8-1), substituting new parts for old.

On rebuild, lubricate all o-rings with motor oil or clean diesel fuel and tighten screws to 50 in. lbs (maximum).

**Important:** Insure inside face of cover is flush with pump body and all flat surfaces are clean (scratch and debris free).

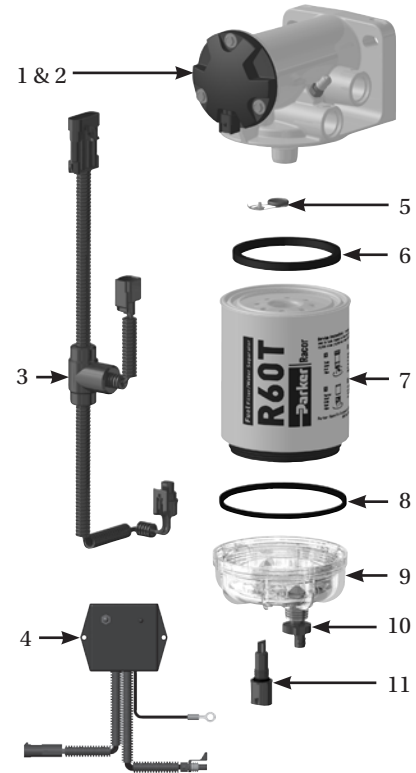
Prescreen element can be cleaned and inspected before replacement.

Clean in solvent bath with a soft brush. Flush with diesel fuel. Gently blow dry with air, if necessary.

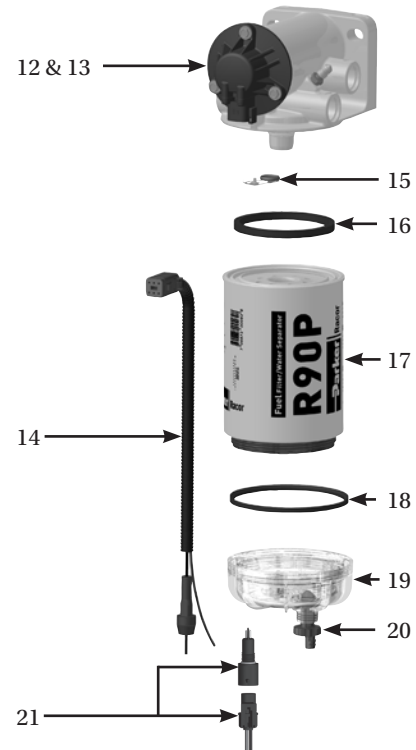
Prime the system and check for leaks. Correct as necessary with engine off.

# Replacement Parts Lists

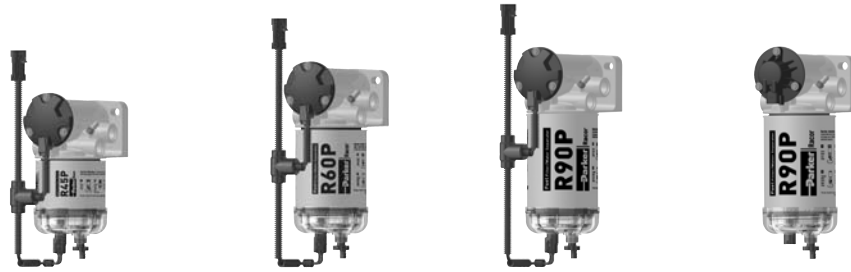
12 Volt Parts	Description
1. RK22895	Replacement Pump Head with Pump
2. RK22933	Primer Pump Kit (Includes pump, o-rings, screws, prescreen element and more. Does NOT include mounting head.)
3. RK22902	Wire Harness Kit
4. RK22943	Control Panel Kit
5. RK 22798	Bypass Valve Kit
6. RK 21501	Gasket Kit (Includes #'s 6 and 8)
7. (see below)	Replacement Elements
<u>Model</u>	<u>2 Micron</u> <u>10 Micron</u> <u>30 Micron</u>
745R	R45S                      R45T                      R45P
760R	R60S                      R60T                      R60P
790R	R90S                      R90T                      R90P
7125R	R125S                      R125T                      R125P
8. RK 21501	Gasket Kit (Includes #'s 6 and 8)
9. RK 21113-13-11	Clear Bowl Kit (Includes #'s 8 and 10)
10. RK 30476	Self-venting Drain Kit
11. RK 30902	Water Sensor Probe Kit
Additional Parts (not shown) RK11-1970 RK22934	Port Plug Kit Prescreen Element Kit (100 micron)



24 Volt Parts	Description
12. RK23085	Replacement Pump Head with Pump
13. RK23087	Primer Pump Kit (Includes pump, o-rings, screws, prescreen element and more. Does NOT include mounting head.)
14. RK23088	Push Button/Harness Kit
15. RK 22798	Bypass Valve Kit
16. RK 21501	Gasket Kit (Includes #'s 16 and 18)
17. (see below)	Replacement Elements
<u>Model</u>	<u>2 Micron</u> <u>10 Micron</u> <u>30 Micron</u>
790R	R90S                      R90T                      R90P
7125R	R125S                      R125T                      R125P
18. RK 21501	Gasket Kit (Includes #'s 16 and 18)
19. RK 21113-13-11	Clear Bowl Kit (Includes #'s 19 and 20)
20. RK 30476	Self-venting Drain Kit
21. RK 30964	Water Sensor Probe Kit/Connector
Additional Parts (not shown) RK11-1970 RK22934	Port Plug Kit Prescreen Element Kit (100 micron)



# Specifications



Models shown with factory installed filter elements

	745R30	760R30	790R30	790R3024
<b>Power</b>	12 volt	12 volt	12 volt	24 volt
<b>Max. Flow Rate</b>	45 GPH (170 LPH)	60 GPH (227 LPH)	90 GPH (341 LPH)	90 GPH (341 LPH)
<b>Port Size (SAE J1926)</b>	7/8"-14 UNF	7/8"-14 UNF	7/8"-14 UNF	7/8"-14 UNF
<b>Height</b>	10.8 in. (27.4 cm)	11.8 in. (29.9 cm)	12.8 in. (32.5 cm)	12.8 in. (32.5 cm)
<b>Width</b>	4.3 in. (11.0 cm)	4.3 in. (11.0 cm)	4.3 in. (11.0 cm)	4.3 in. (11.0 cm)
<b>Depth</b>	6.5 in. (16.5 cm)	6.5 in. (16.5 cm)	6.5 in. (16.5 cm)	6.5 in. (16.5 cm)
<b>Weight (dry)</b>	5.5 lb (2.50 kg)	5.7 lb (2.58 kg)	5.9 lb (2.67 kg)	6.5 lb (2.95 kg)
<b>Clean Pressure Drop</b>	0.70 PSI (4.8 kPa)	0.70 PSI (4.8 kPa)	0.70 PSI (4.8 kPa)	0.70 PSI (4.8 kPa)
<b>Ambient Temp. Range</b>	-40° to +250°F (-40° to +121°C)			
<b>Max. Fuel Temp.</b>	190°F (88°C)			



Models shown with factory installed filter elements

	7125R10	7125R1024	7125R30	7125R3024
<b>Power</b>	12 volt	24 volt	12 volt	24 volt
<b>Max. Flow Rate</b>	120 GPH (455 LPH)	120 GPH (455 LPH)	120 GPH (455 LPH)	120 GPH (455 LPH)
<b>Port Size (SAE J1926)</b>	7/8"-14 UNF	7/8"-14 UNF	7/8"-14 UNF	7/8"-14 UNF
<b>Height</b>	15.2 in. (38.5 cm)	15.2 in. (38.5 cm)	15.2 in. (38.5 cm)	15.2 in. (38.5 cm)
<b>Width</b>	4.3 in. (11.0 cm)	4.3 in. (11.0 cm)	4.3 in. (11.0 cm)	4.3 in. (11.0 cm)
<b>Depth</b>	6.5 in. (16.5 cm)	6.5 in. (16.5 cm)	6.5 in. (16.5 cm)	6.5 in. (16.5 cm)
<b>Weight (dry)</b>	6.9 lb (3.13 kg)	6.9 lb (3.13 kg)	6.9 lb (3.13 kg)	6.9 lb (3.13 kg)
<b>Clean Pressure Drop</b>	0.70 PSI (4.8 kPa)	0.70 PSI (4.8 kPa)	0.70 PSI (4.8 kPa)	0.70 PSI (4.8 kPa)
<b>Ambient Temp. Range</b>	-40° to +250°F (-40° to +121°C)			
<b>Max. Fuel Temp.</b>	190°F (88°C)			

# Limited Warranties Statement

All products manufactured or distributed by Racor are subject to the following, and only the following, LIMITED EXPRESS WARRANTIES, and no others: For a period of one (1) year from and after the date of purchase of a new Racor product, Racor warrants and guarantees only to the original purchaser-user that such a product shall be free from defects of materials and workmanship in the manufacturing process. The warranty period for pumps and motors is specifically limited to ninety (90) days from date of purchase. A product claimed to be defective must be returned to the place of purchase. Racor, at its sole option, shall replace the defective product with a comparable new product or repair the defective product. This express warranty shall be inapplicable to any product not properly installed and properly used by the purchaser-user or to any product damaged or impaired by external forces.

THIS IS THE EXTENT OF WARRANTIES AVAILABLE ON THIS PRODUCT. RACOR SHALL HAVE NO LIABILITY WHATSOEVER FOR CONSEQUENTIAL DAMAGES

FLOWING FROM THE USE OF ANY DEFECTIVE PRODUCT OR BY REASON OF THE FAILURE OF ANY PRODUCT. RACOR SPECIFICALLY DISAVOWS ALL OTHER WARRANTIES, EXPRESS OR IMPLIED INCLUDING, WITHOUT LIMITATION, ALL WARRANTIES OF FITNESS FOR A PARTICULAR PURPOSE (EXCEPT FOR THOSE WHICH APPLY TO PRODUCT OR PART THEREOF THAT IS USED OR BOUGHT FOR USE PRIMARILY FOR PERSONAL, FAMILY, OR HOUSEHOLD PURPOSES), WARRANTIES OF DESCRIPTION, WARRANTIES OF MERCHANTABILITY, TRADE USAGE OR WARRANTIES OR TRADE USAGE.

## Warning

Failure or improper selection or improper use of the products and/or systems described herein or related items can cause death, personal injury and property damage. This document and other information from Parker Hannifin Corporation, its subsidiaries and authorized distributors provide product

and/or system options for further investigation by users having technical expertise. It is important that you analyze all aspects of your application and review the information concerning the product or system in the current product catalog. Due to the variety of operating conditions and applications for these products or systems, the user, through its own analysis and testing, is solely responsible for making the final selection of the products and systems and assuring that all performance, safety and warning requirements of the applications are met. The products described herein, including with limitation, product features, specifications, designs, availability and pricing, are subject to change by Parker Hannifin Corporation and its subsidiaries at any time without notice.

The following statement is required pursuant to proposition 65, applicable in the State of California: 'This product may contain a chemical known to the State of California to cause cancer or reproductive toxicity'