

ePTO System Solutions

Tailored Electric Power Take Off for Trucks and Commercial Vehicles



ENGINEERING YOUR SUCCESS.

The High Art of Integration: Tailored ePTO Systems

Tailored around your needs: A broad range of balanced components to meet your next generation electric power take-off design challenges.



BENEFITS

- High compactness with one-box-solution for optimal vehicle integration
- Customised plug and run system
- Multiple control modes
 - Pressure / Flow
 - Electric load sensing
- Reduce complexity with "one-stop shop" supplier
- Low energy consumption with efficient solution - operation on demand

APPLICATIONS:

- Street sweepers
- Construction
- Material handling
- Refuse trucks
- Agricultural equipments...



IQAN Controller



IQAN by Parker offers a complete range of control products from the most basic valve driver application to a complete control system.

GVI Global Vehicle Inverter



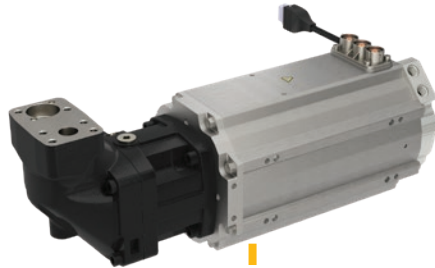
Parker's GVI inverter series is characterized by safety, efficiency and reliability and suitable for traction as well as hydraulic work functions. The product is designed to meet ISO26262 and EN13849 functional safety standards.

QDC thermal management cooler



The water glycol QDC cooler range, either 12/24 VDC or 600 VDC fits perfectly with Parker inverters and motors, reliable and ensuring greatest efficiency for all electrified applications.

Configured ePump



Consists of an electric motor, directly coupled to a hydraulic pump (EHP Series) Our Configured ePumps provide the lowest possible installed cost and highest efficiency, while still maintaining superior reliability in the most demanding applications.



GVM Global Vehicle Motor

The GVM electric motor range with PMAC technology offers scalability, highest power density, compact footprint and unrivaled efficiency for electrified machinery.



Hydraulic pump

A wide range of hydraulic pumps with fixed or variable displacement depending on the requirements, directly coupled to the motor.

Note: Other different mechanical outputs are available (ISO7653, SAE interfaces, etc...)



Motion Solutions that Enables a Cleaner Tomorrow

Everything but the Truck

System Capabilities

Our plug-and-run ePTO solutions are developed and manufactured by Parker Mobile Electrification Center (PMEC) in Europe, located in Offenburg/Germany, and in North America located in Marysville, Ohio USA. Parker's Center of Excellence for mobile electrification system solutions has the entire electro-hydraulic engineering experience of the global leader in motion & control technologies at its disposal. One supplier for all applications and a wide range of integration options – this is PMEC!

System Solutions

Parker ePTO system solutions are tailor-made for our customers' applications and designed according to their specifications concerning:

- Voltage/torque requirements
- Mechanical interface
- Pressure and flow requirements
- Noise requirements
- Efficiency

Intense cooperation with our customers ensures optimal integration into the vehicle. The result: a compact, fully customized solution with high power density from a single source.

System Components

Our ePTO system design is based on a permanent magnet motor, available with different mechanical interfaces, and a wide range of best-in-class, highly reliable products which allows the flexible selection of optimal components for individual applications:

- GVM Permanent Magnet AC synchronous motor (PMAC)
- GVI Global Vehicle Inverter
- Various pump technologies: axial piston, external gear, vane, and bent axis pumps
- QDC thermal management cooler system
- IQAN control system
- Software package
- Parker sensors, filters, hoses, connectors, cables

More information



www.parker.com



European Headquarters
La Tuilière 6, 1163 Etoy,
Switzerland
Tel: +41 21 821 85 00

North American Headquarters
Hydraulic Pump & Power Systems Division
14249 Industrial Parkway
Marysville, OH 43035
Tel: 1 937 644 3915